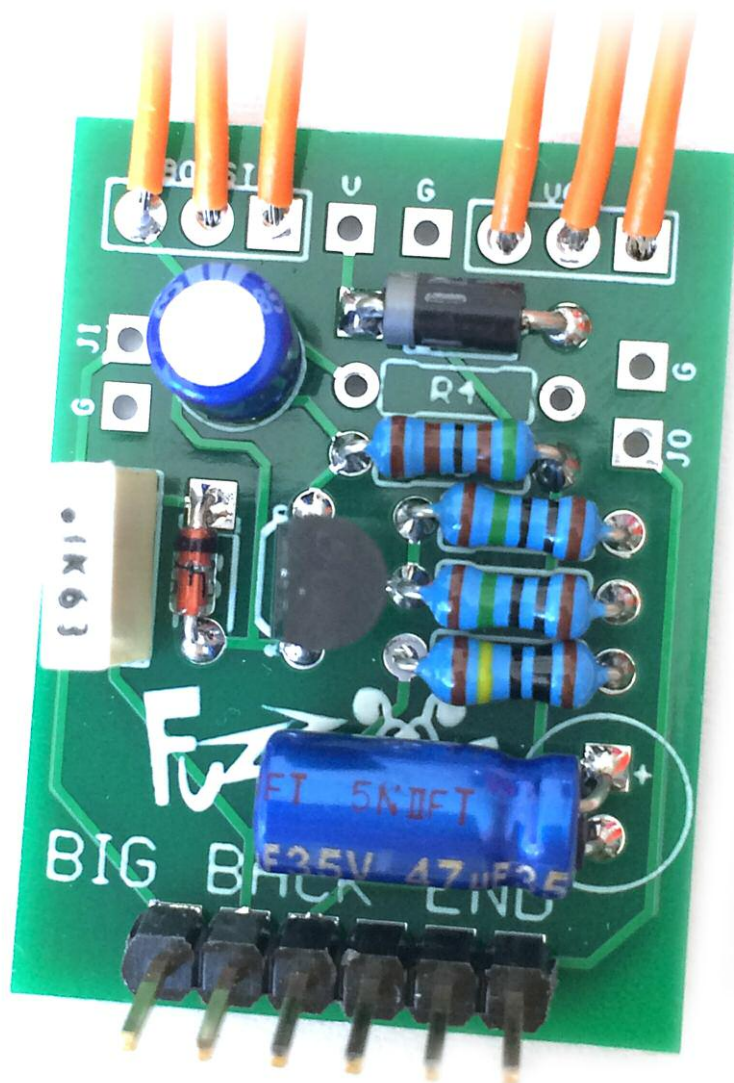
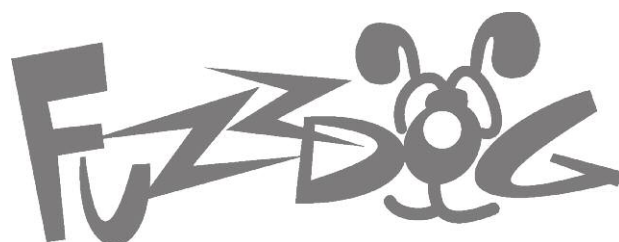


Fuzz Pup



Big Back End

Mini version of the second stage
of the Double Down Boner Boost



IMPORTANT

Before you start...

Grab the general build doc that covers all FuzzPup builds. Most of the information you need for this build is in there.

Read it? OK, carry on.



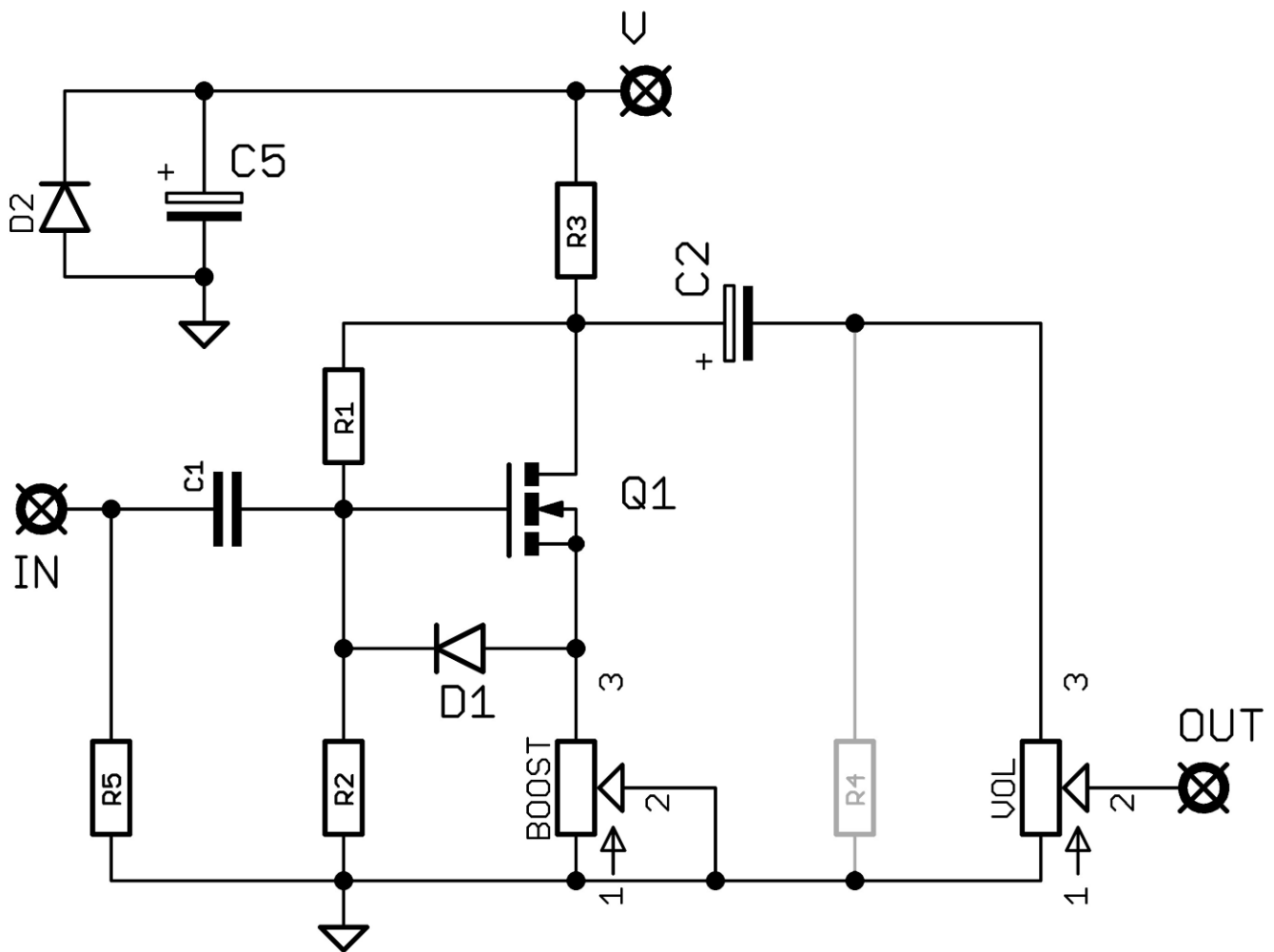
FuzzPups

Lovely little boxes of joy with a
totally standardised build pattern

Contents of this document are ©2016 Pedal Parts Ltd.
No reproduction permitted without the express written
permission of Pedal Parts Ltd. All rights reserved.



Schematic + BOM



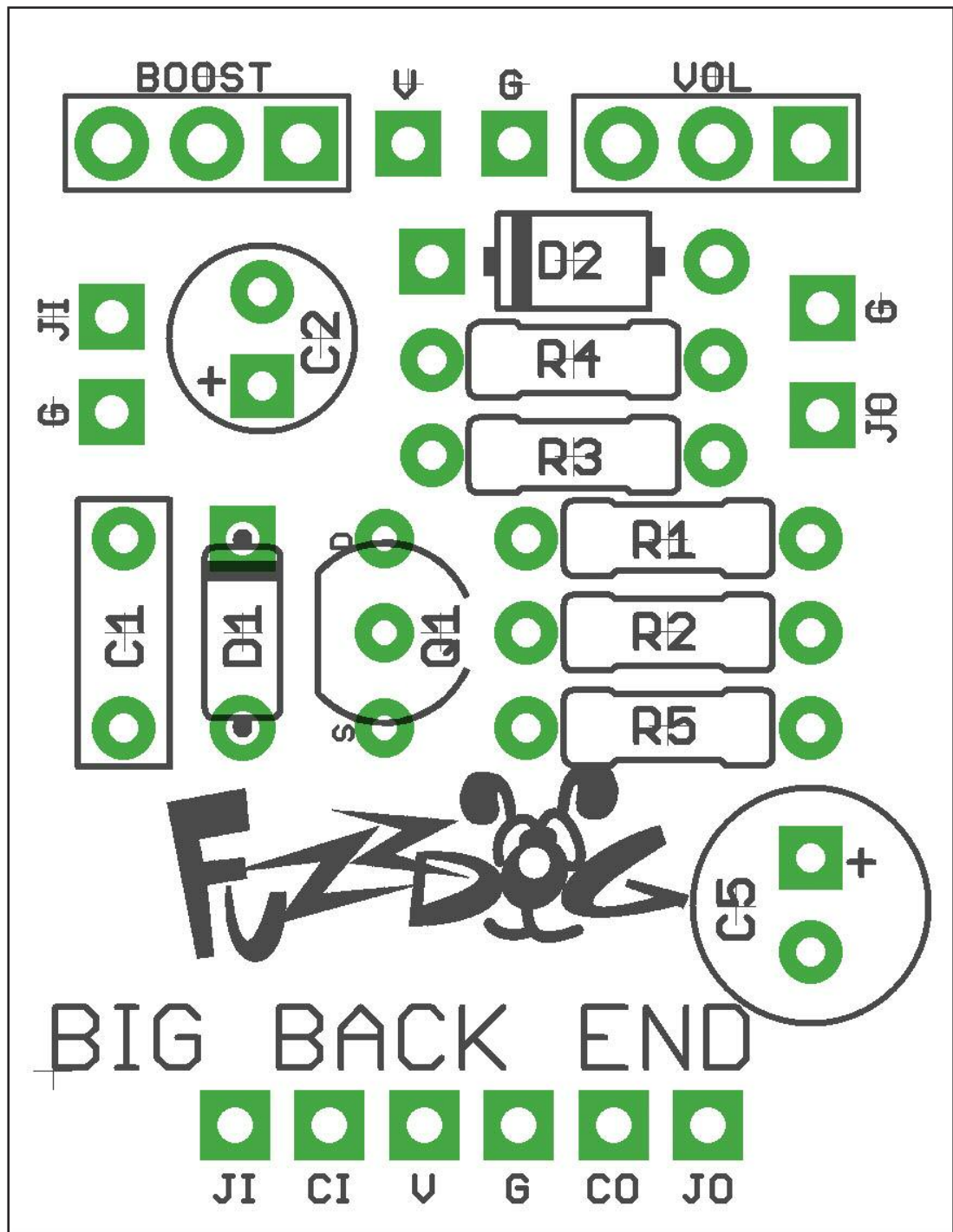
R1 10M
R2 10M
R3 5K1
R4 100K*
R5 1M**

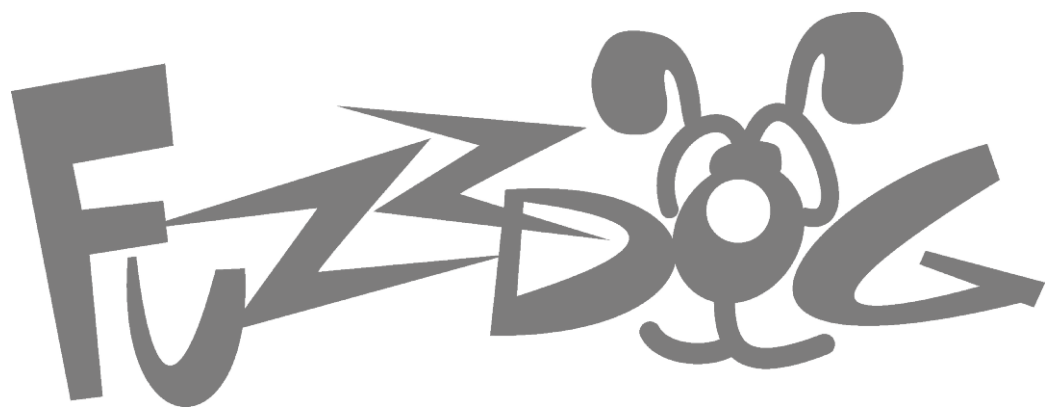
C1 100n
C2 10uf elec
C5 47-100uf elec

Q1 BS170
D1 9V zener
BOOST 5KC
VOL 100KA

*R4 has been added to the board so you can make a FuzzPup version of the Bomer Boost if you want to. Leave it out in a Big Back End Build. For Bomer include R4, leave out VOL and jumper VOL pads 2-3.

**R5 is an optional anti-pop resistor. You should probably add it. Honestly.





FuzzDog.co.uk