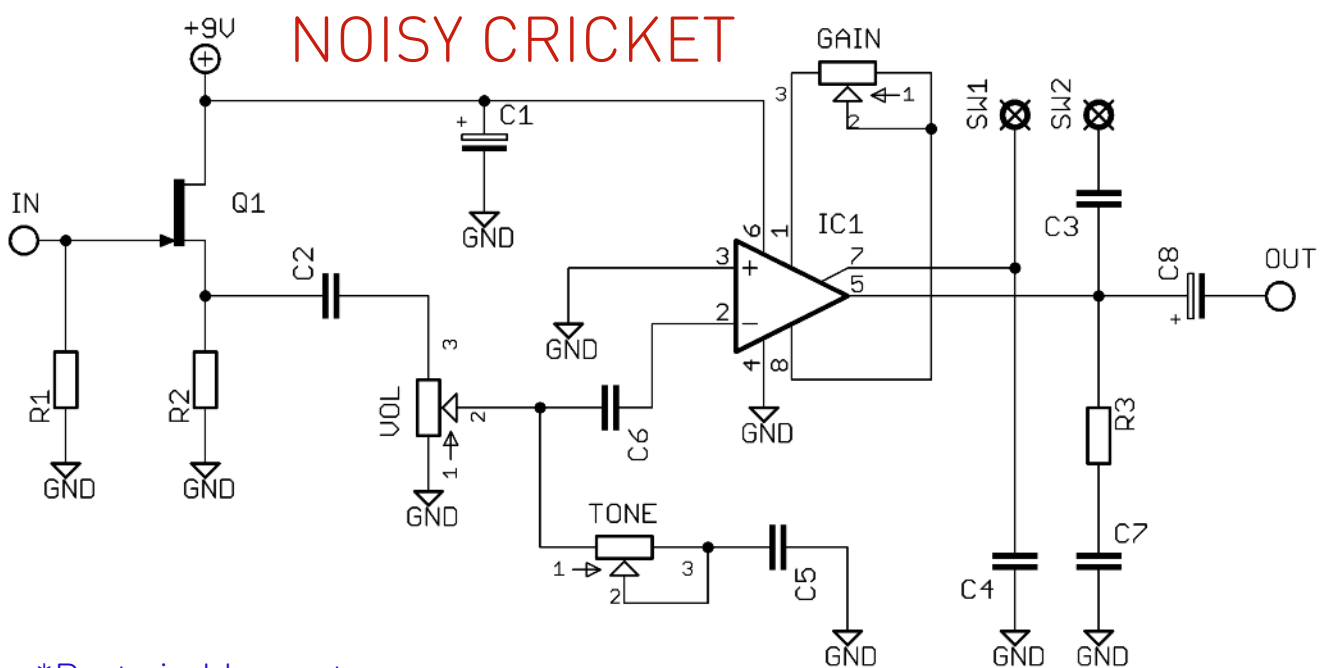
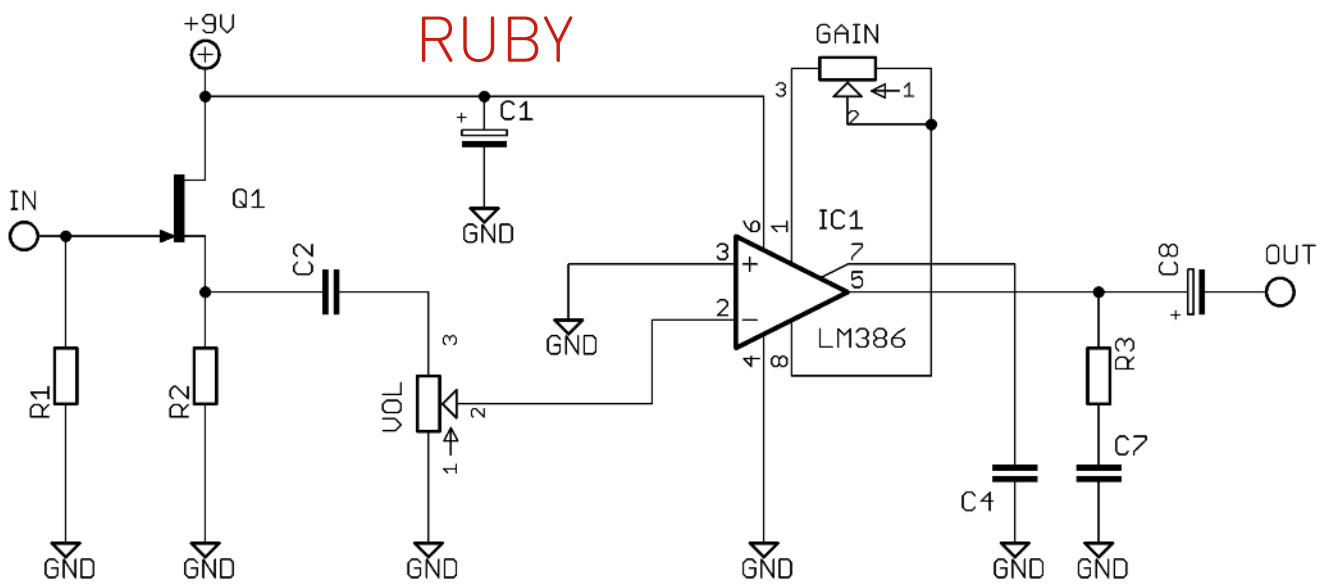


# Ruby / Noisy Cricket

A right sexy pair of  
little guitar amps

[PedalParts.co.uk](http://PedalParts.co.uk)

# Schematics



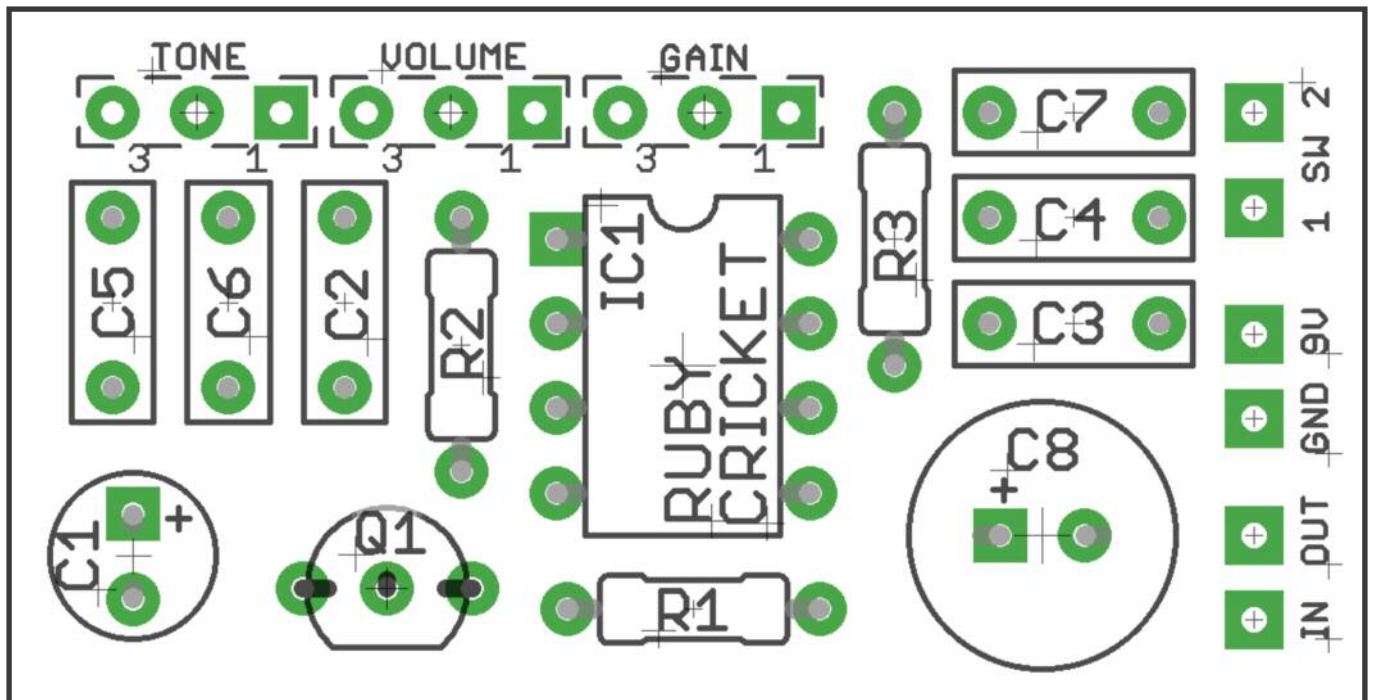
\*Parts in blue not required for RUBY

## BOM

R1 1M  
R2 3K9  
R3 10R

C1 100u elec  
C2 47n  
C3 100n\*  
C4 100n  
C5 100n\*  
C6 100n\*  
C7 47n  
C8 100u elec

Q1 2N5457  
IC1 LM386  
VOL 10KB  
TONE 100KB\*  
GAIN 1KB  
SW1 SPST\*



The Noisy Cricket, built on the foundations of the Ruby by Beavis Audio, adds a tone control and a 'Grit' switch which adds a little bit more oomph. What you build is up to you. To be honest I don't see the point of the tone control on what is basically a low-fi practice amp, but whatever floats your boat.

Grit switch is SPST, but you can use anything that'll join/separate those two pad connections at the flip of a lever.

For **Noisy Cricket**, fill all those PCB spaces.

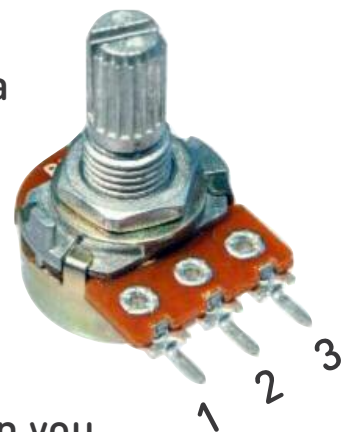
For **Ruby**, omit TONE, SW, C3, C5, C6, and place a jumper wire across the pads of C6.

Wiring shown overleaf will disconnect the battery when you remove the jack plug from the input, and also when a DC plug is inserted.

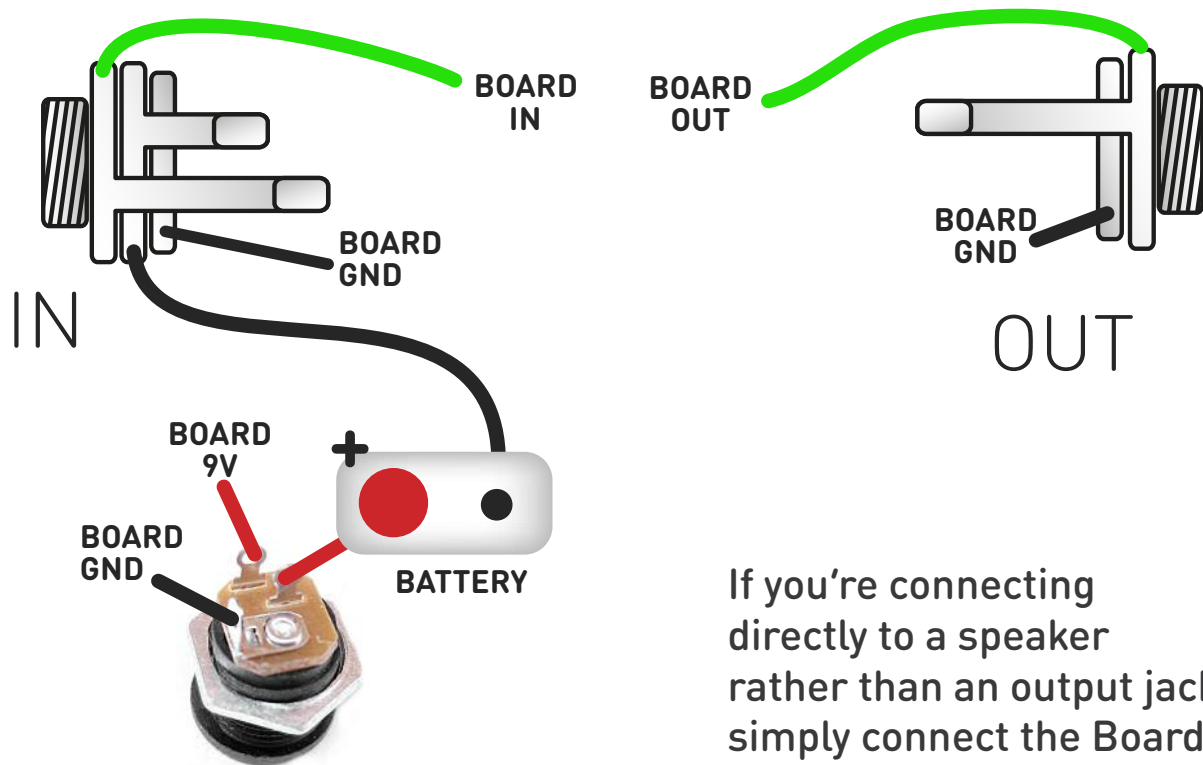
Use some kind of heat sink on the legs the transistor when soldering. They aren't keen on heat. Any more than 3-4 seconds of iron and its toast.

For more info on both the RUBY and the NOISY CRICKET head over to these wonderful sites:

[runoffgroove.com](http://runoffgroove.com)      [beavisaudio.com](http://beavisaudio.com)



# Wire it up



If you're connecting directly to a speaker rather than an output jack, simply connect the Board Out wire to the + terminal, and Board GND to -

The Board GND connections don't all have to directly attach to the board. You can run a couple of wires from the DC connector, one to the board, another to the IN jack, then daisy chain that over to the OUT jack.

It doesn't matter how they all connect, as long as they do.

This circuit is standard, Negative GND. Your power supply should be Tip Negative / Sleeve Positive. That's the same as your standard pedals (Boss etc), and you can safely daisy-chain your supply to this pedal. Now... CRANK THAT MOFO!

[PedalParts.co.uk](http://PedalParts.co.uk)