

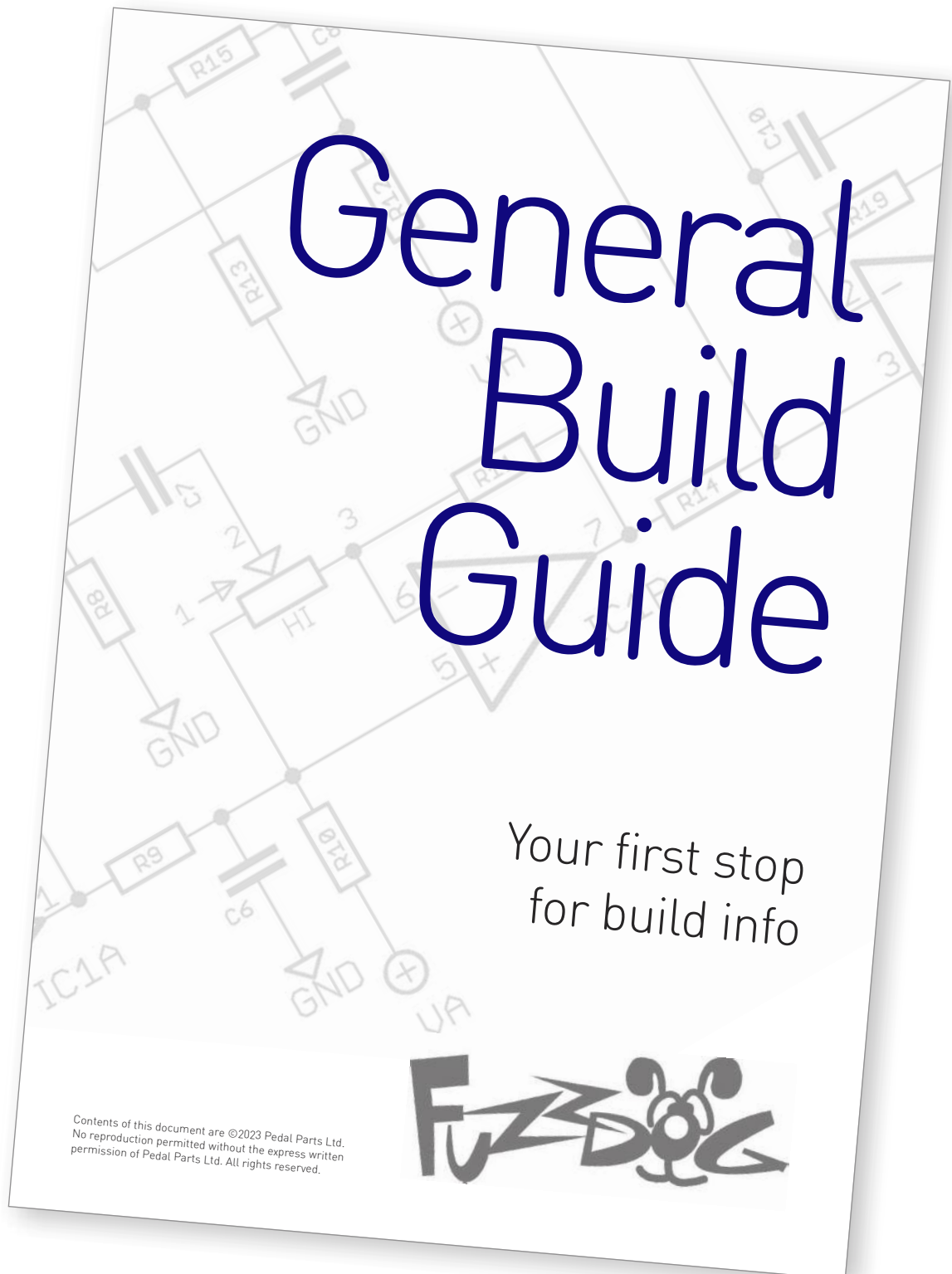
Vintage Soda

Extreme fuzz fun

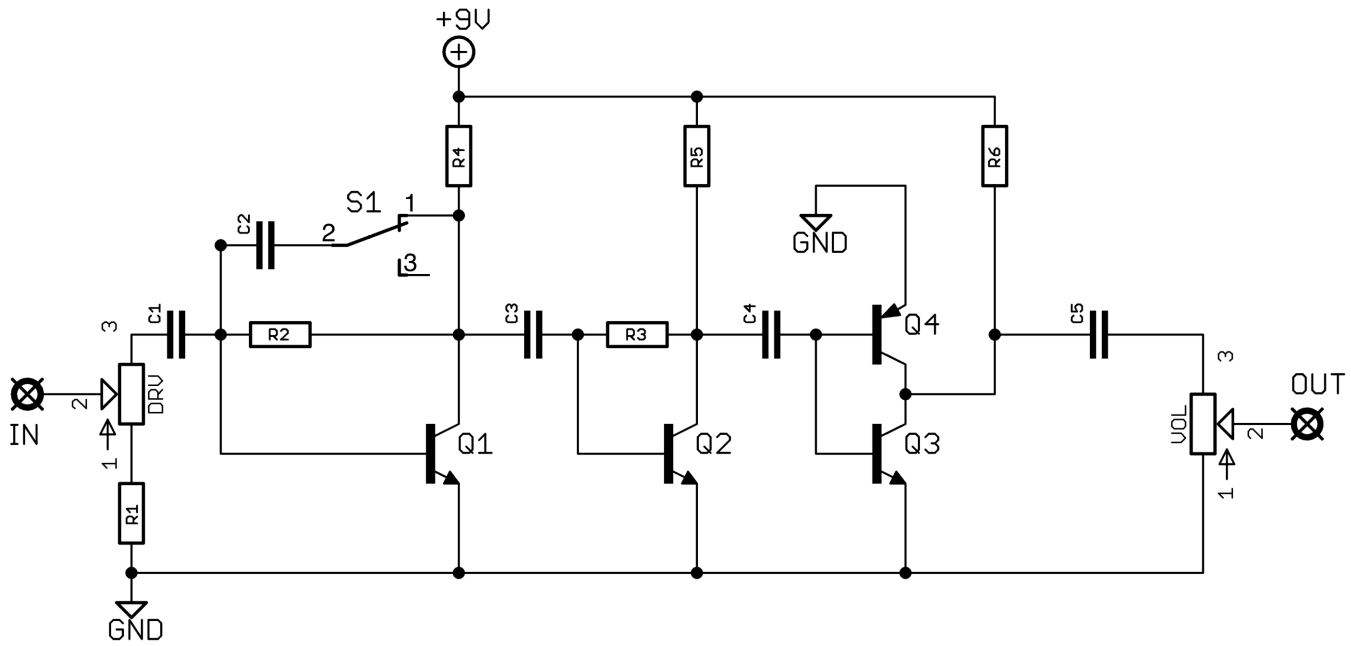


Before you dig in, ensure you download and read the **General Build Guide**.

It contains all the information you need for a successful outcome.



Schematic + BOM



- R1 1K
- R2 2M2
- R3 3M3
- R4 10K
- R5 10K
- R6 10K

- C1 100n
- C2 100n
- C3 100n
- C4 100n
- C5 100n

- Q1-3 MPSA18
- Q4 2N2907

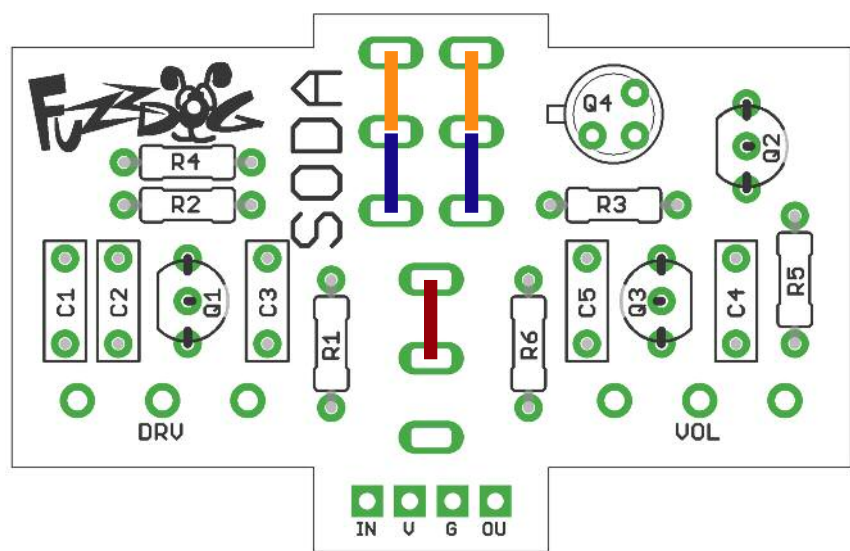
- VOL 100KA
- DRV 100KB

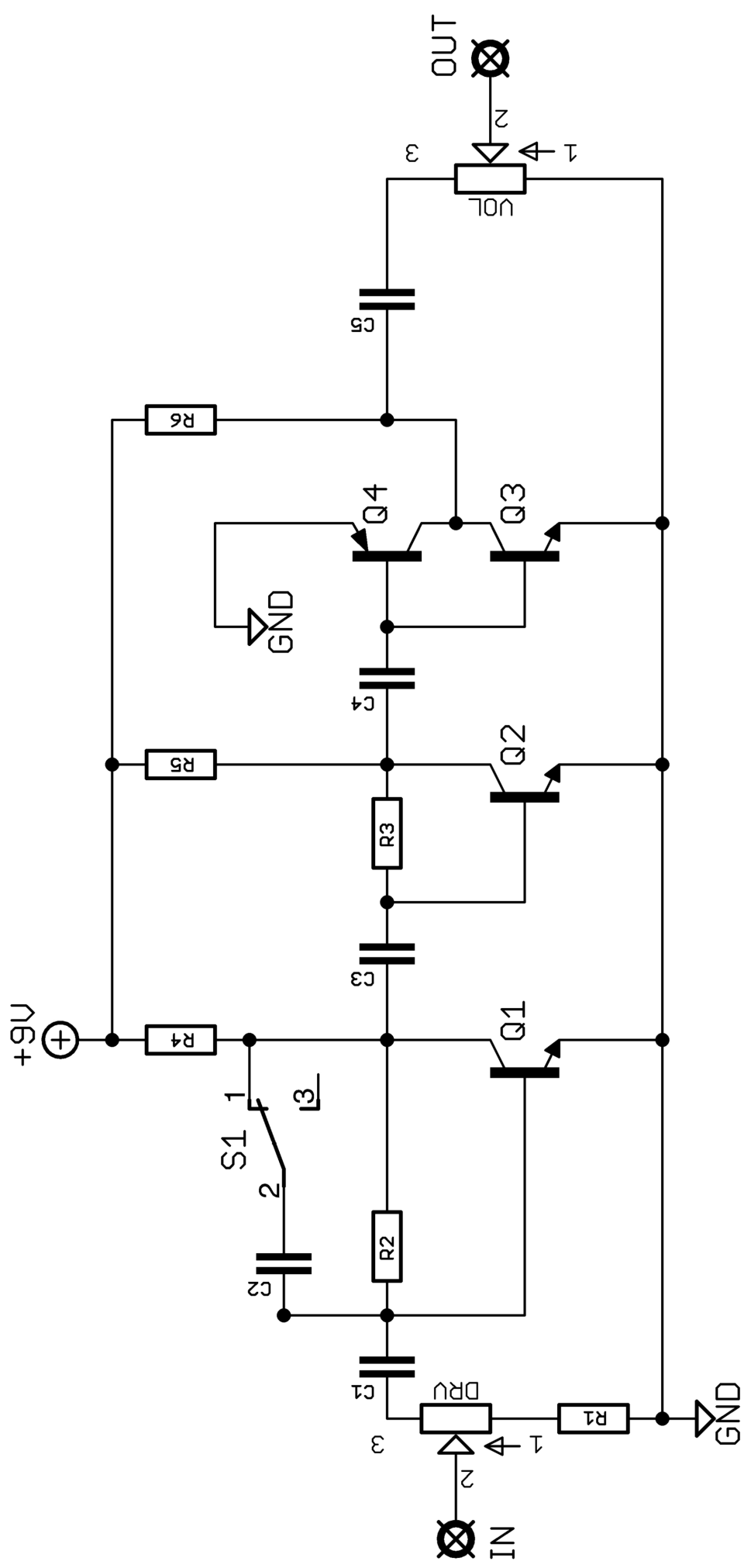
- S1 SPDT ON-ON
- S2 DPDT ON-ON

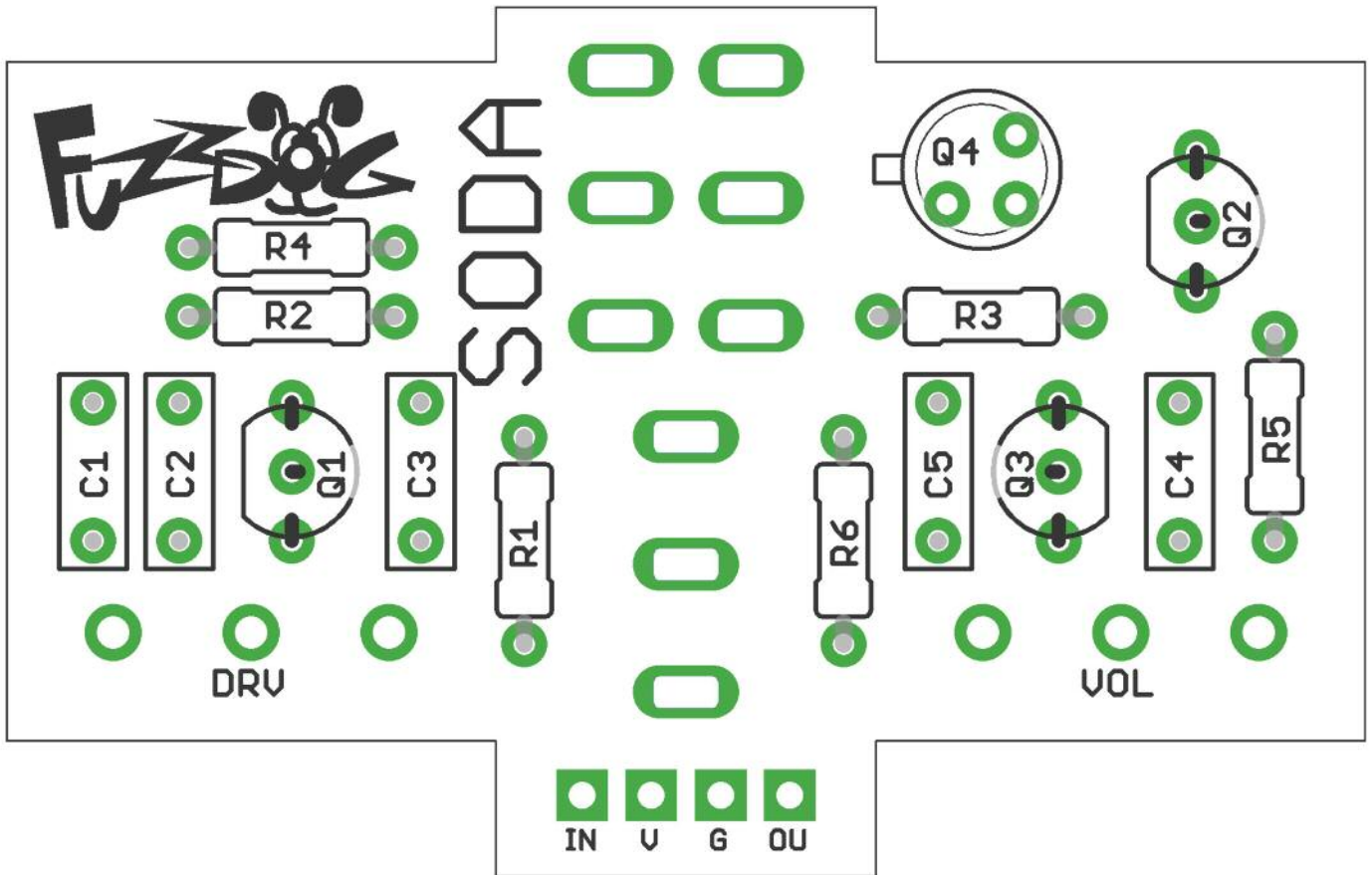
The two toggle switches are entirely option.

S1 toggles 'chaos' mode. How much use you'll find this is totally subjective. If you want to leave this switch out add a jumper as shown below in red.

S2 toggles between Soda (down) and Vintage (up) modes, the latter adding an octave-up to the signal. It does this by flipping the emitter and collector of Q4. It's not shown on the schematic as it's difficult to draw out in a visually pleasing way, but take our word for it. If you want to leave out the switch and hard wire it in either mode, add jumpers as shown below. Blue for Soda, Orange for Vintage.







The power and signal pads on the PCB conform to the FuzzDog Direct Connection format, so can be paired with the appropriate daughterboard for quick and easy offboard wiring. Check the separate daughterboard document for details.

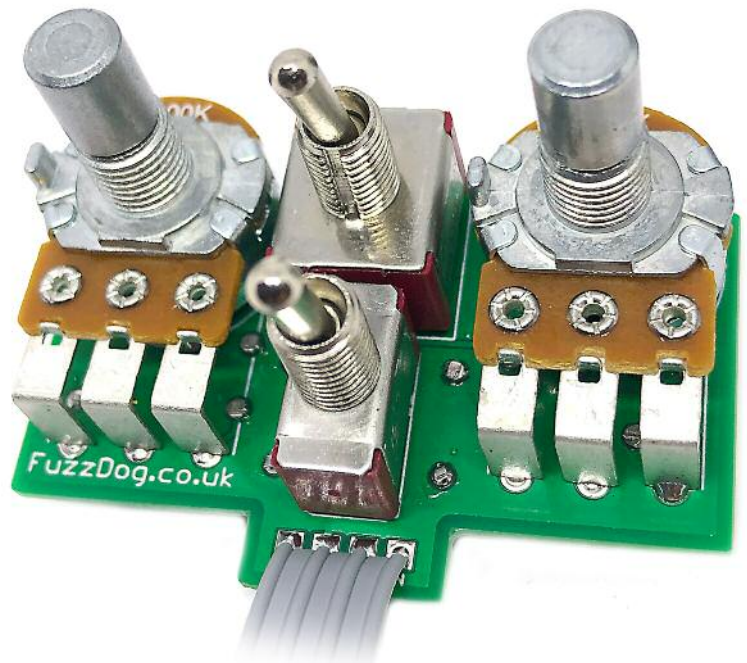
Be very careful when soldering the transistors. They're very sensitive to heat. You should use some kind of heat sink (crocodile clip or reverse action tweezers) on each leg as you solder them. Keep exposure to heat to a minimum (under 2 seconds).

You should solder all other board-mounted components before you solder the pots. Once they're in place you'll have no access to much of the board.

Snap the small metal tag off the pot so it can be mounted flush in the box.

NOTE:

Image is the previous version of the PCB. The DPDT toggle switch has been moved 4mm higher up on V2.



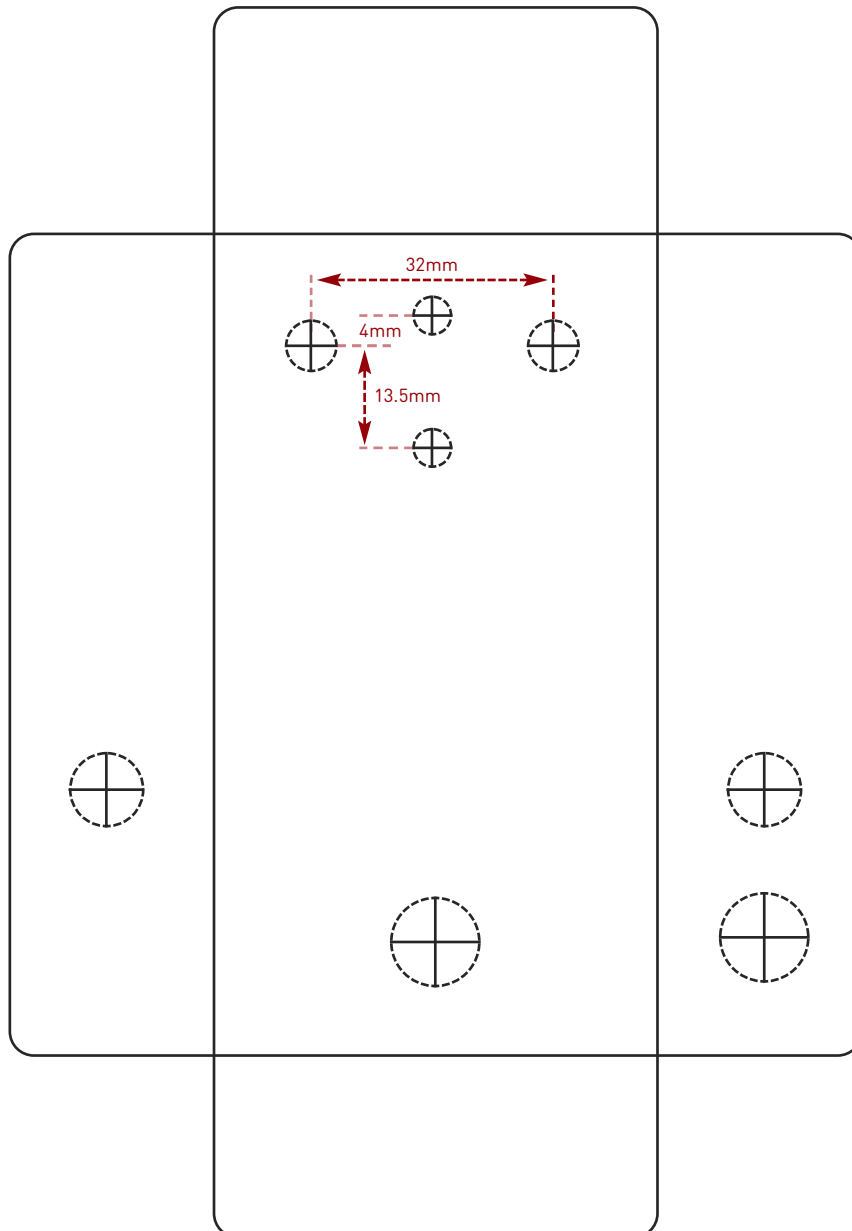
Drilling template

Hammond 1590B
60 x 111 x 31mm

Recommended drill sizes:

Pots	7mm
Jacks	10mm
Footswitch	12mm
DC Socket	12mm
Toggle switches	6mm

It's a good idea to drill the pot and toggle switch holes 1mm bigger if you're board-mounting them.
Wiggle room = good!



This template is a rough guide only. You should ensure correct marking of your enclosure before drilling. You use this template at your own risk. Pedal Parts Ltd can accept no responsibility for incorrect drilling of enclosures.

FuzzDog.co.uk