

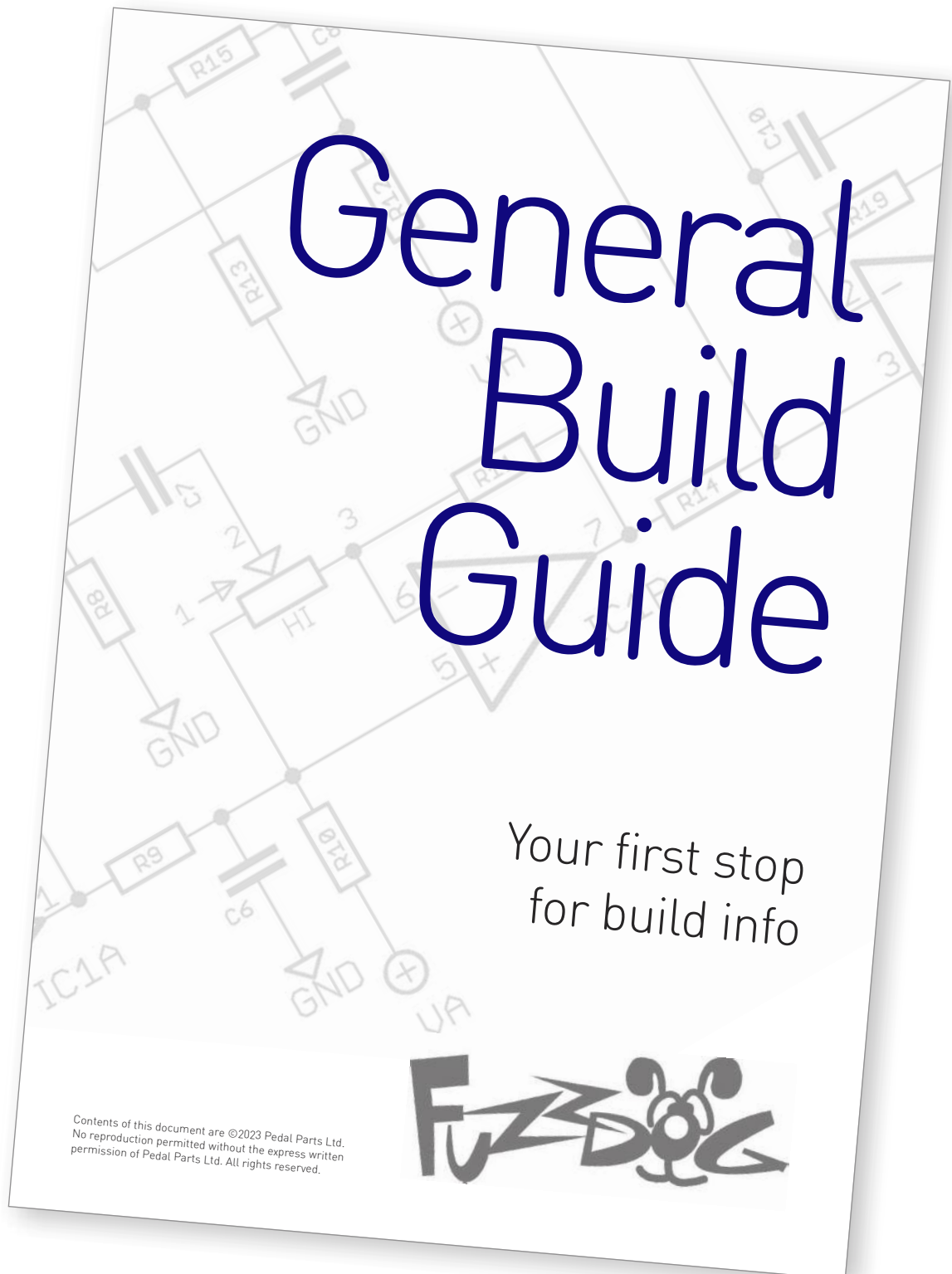
Vintage POW! v3

Colorsound's awesome
Power Boost and Overdriver



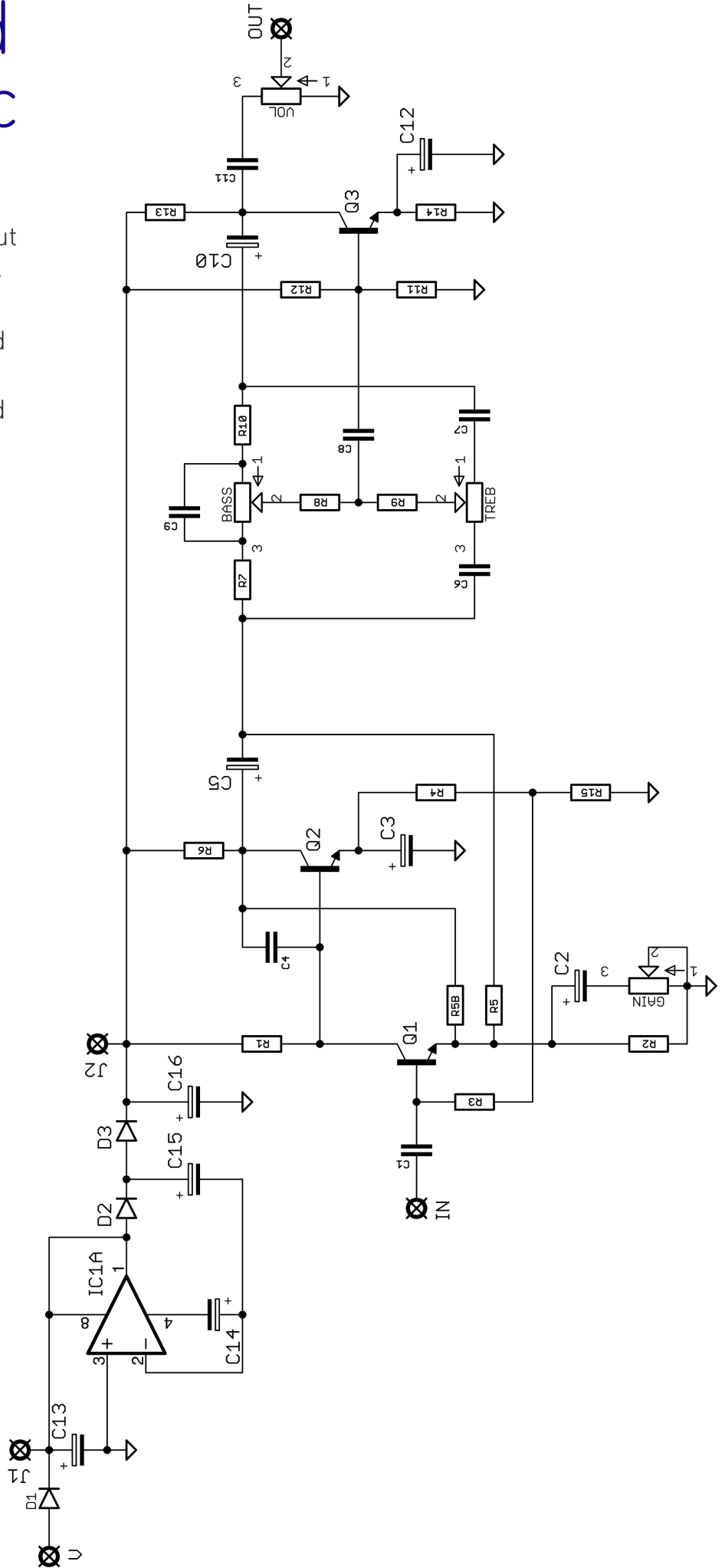
Before you dig in, ensure you download and read the **General Build Guide**.

It contains all the information you need for a successful outcome.

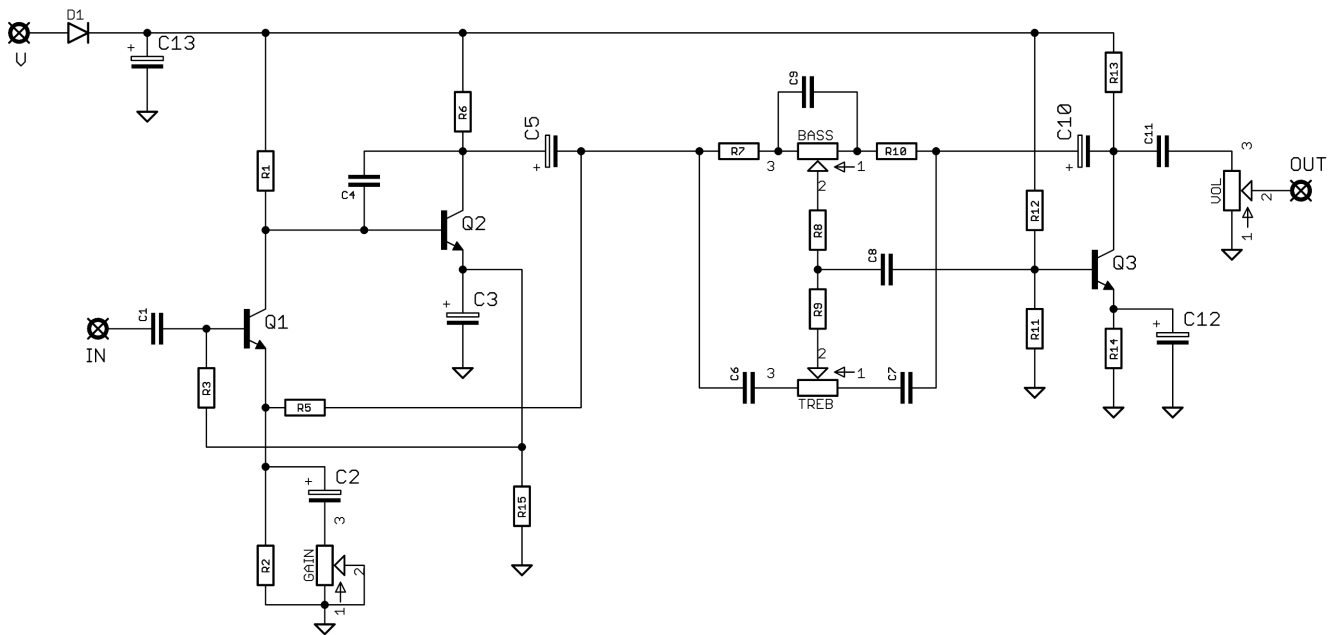


Full board schematic

This is the full circuit laid out on the PCB. It has the parts and connections for both variations (Power Boost and Overdriver). The following pages show only those used in each version.



Schematic / BOM - Overdriver



R1	120K	C1	220n	D1	1N5817
R2	6K8	C2	22u elec	D2-3	Empty
R3	150K	C3	22u elec	IC1	Empty
R4	Jumper	C4	220p	Q1-3	BC109
R5	12K	C5	10u elec	DRIVE	5KC
R5B	Empty	C6	10n	TREB	100KB
R6	1K8	C7	10n	BASS	100KB
R7	4K7	C8	100n	VOL	100KA
R8	39K	C9	100n		
R9	5K6	C10	10u elec*		
R10	4K7	C11	220n		
R11	33K	C12	22u elec		
R12	150K	C13	100u elec		
R13	1K8	C14	Empty		
R14	470R	C15	Empty		
R15	470R	C16	Empty		

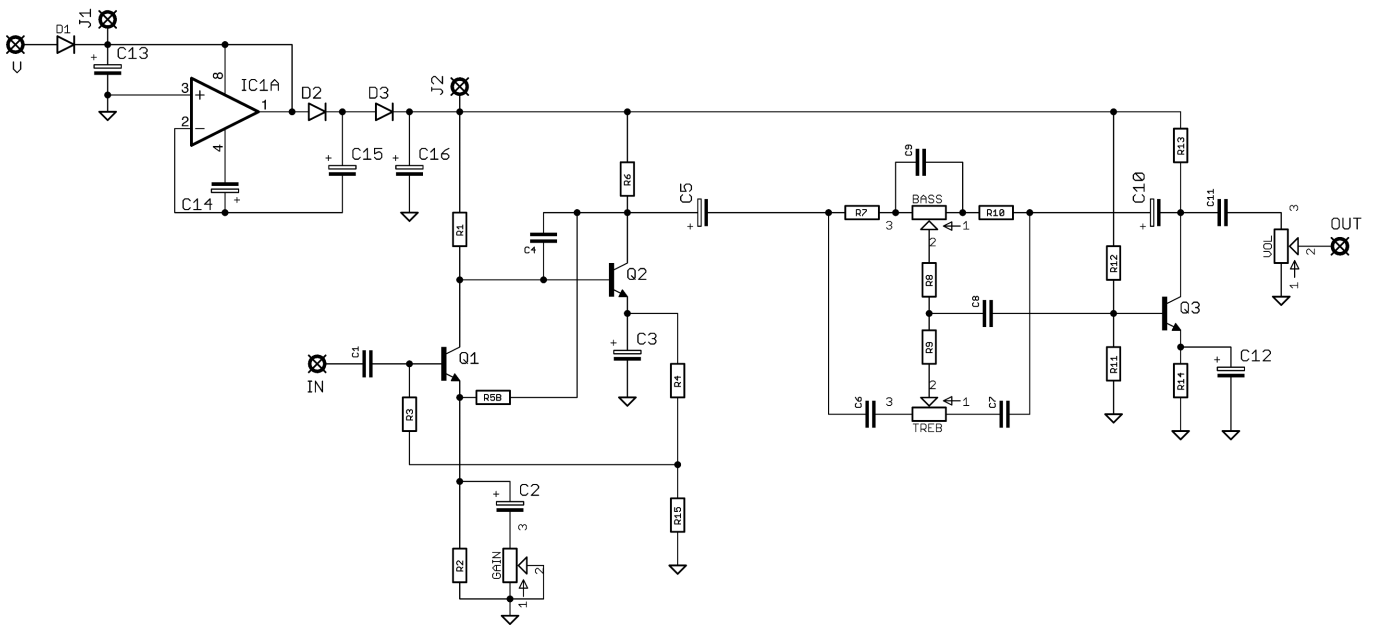
*Reverse the orientation of C10.

Place a jumper across the pads marked J1.

Transistors should be placed as shown >>>



Schematic / BOM - Power Boost



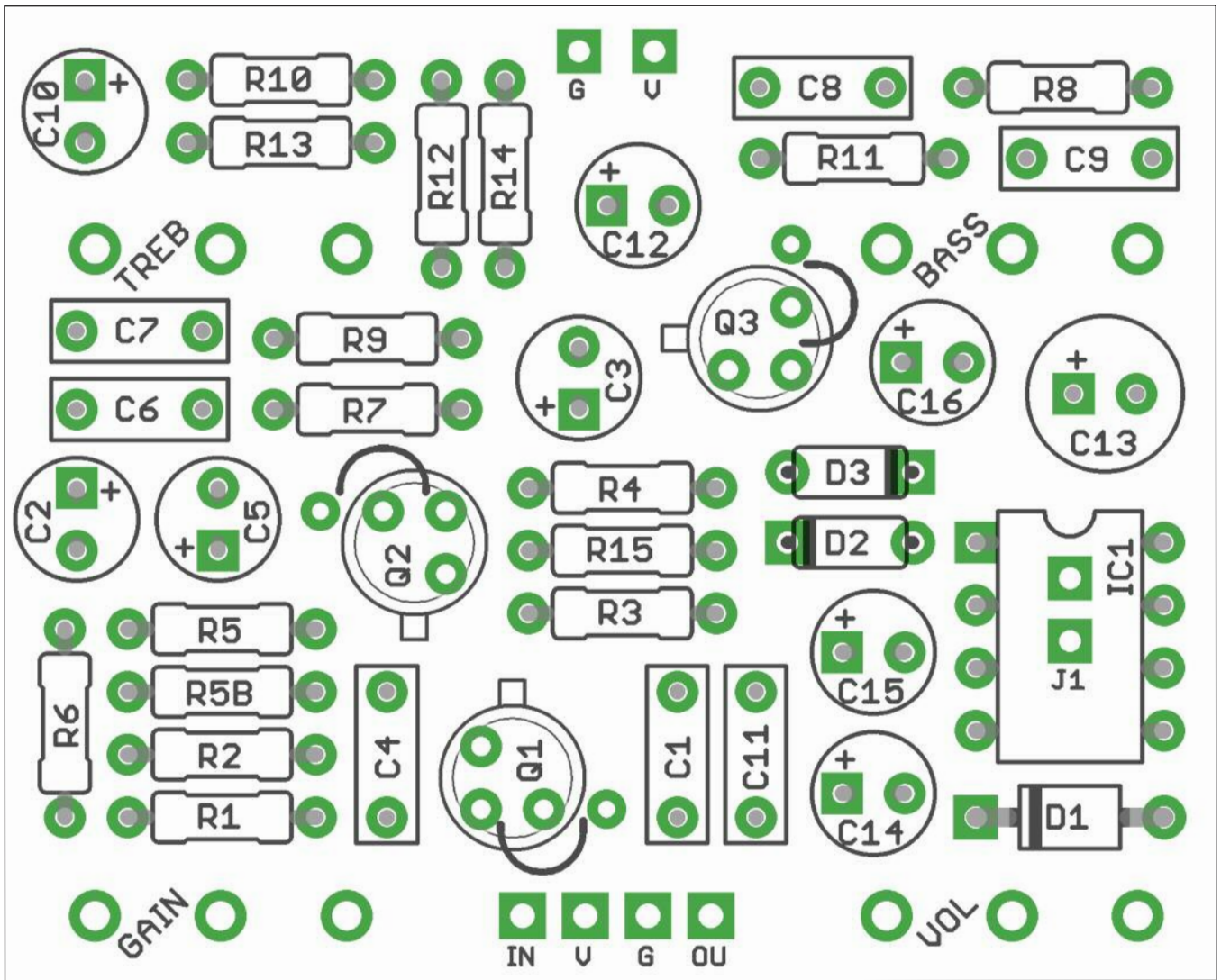
R1	120K	C1	220n	D1	1N5817
R2	4K7	C2	22u elec	D2-3	1N4148
R3	150K	C3	22u elec	IC1	7660SEPA
R4	470R	C4	220p	Q1-3	BC169C or BC184L
R5	Empty	C5	10u elec	DRIVE	5KC
R5B	12K	C6	10n	TREB	100KB
R6	1K8	C7	10n	BASS	100KB
R7	4K7	C8	100n	VOL	100KA
R8	39K	C9	100n		
R9	5K6	C10	22u elec*		
R10	4K7	C11	220n		
R11	33K	C12	10u elec		
R12	180K	C13	100u elec		
R13	3K9	C14	10u elec		
R14	1K	C15	10u elec		
R15	1K2	C16	10u elec		

*Reverse the orientation of C10.

If you wish to power this at 18V from your 9V supply, include the charge pump parts listed in green. If you're using an 18V supply just leave those out and jumper the pads marked J1.

Transistors should be placed as shown >>>





PCB layout ©2023 Pedal Parts Ltd.

Snap the small metal tag off the pots so they can be mounted flush in the box.

You should solder all other board-mounted components before you solder the pots.

Once they're in place you'll have no access to much of the board.



Drilling template

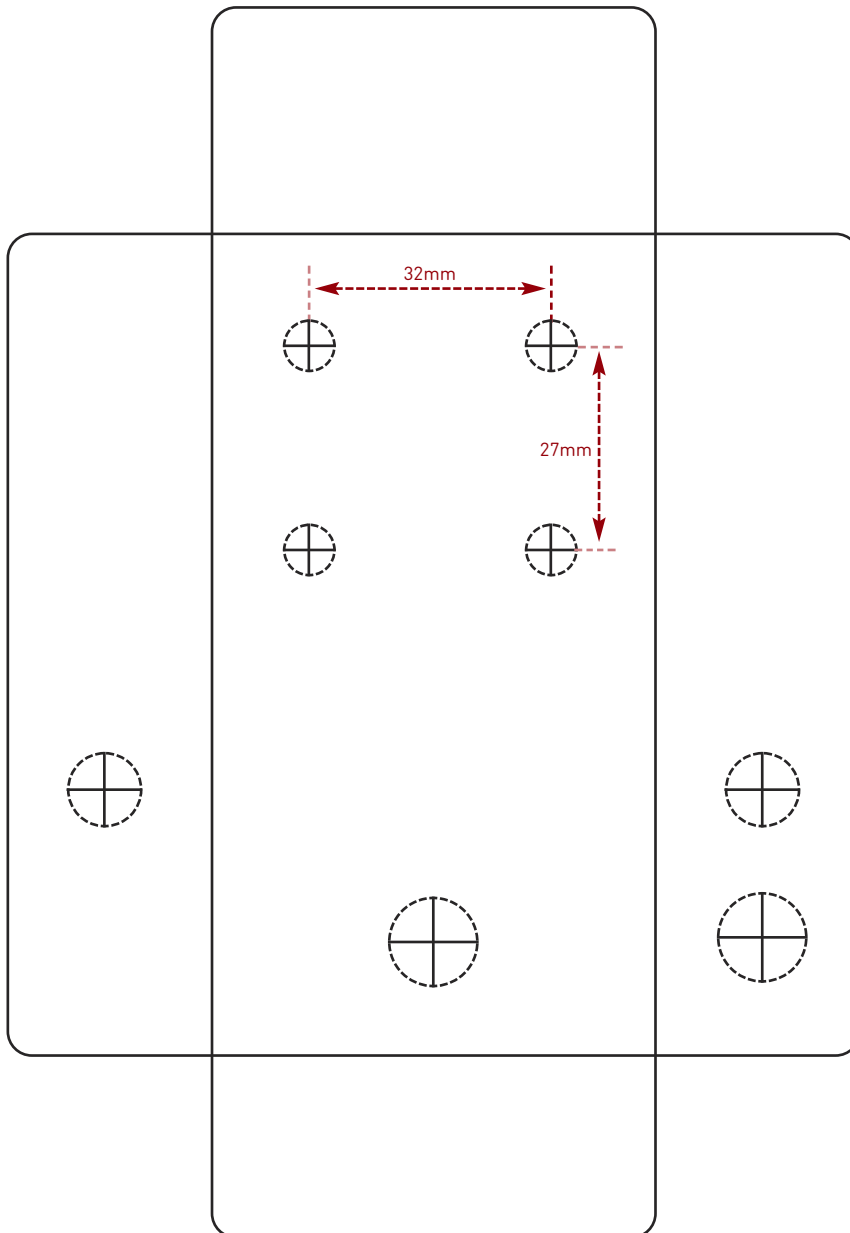
Hammond 1590B - 60 x 111 x 31mm

Drill sizes listed are minimum.

It's a good idea to add 1mm to anything mounted on the PCB that'll poke through the front of the enclosure.

Drill sizes:

Pots	7mm
Jacks	10mm
Footswitch	12mm
DC Socket	12mm
Toggle switches	6mm
Rotary switches	10mm



This template is a rough guide only. You should ensure correct marking of your enclosure before drilling. You use this template at your own risk.

Pedal Parts Ltd can accept no responsibility for incorrect drilling of enclosures.

FuzzDog.co.uk