

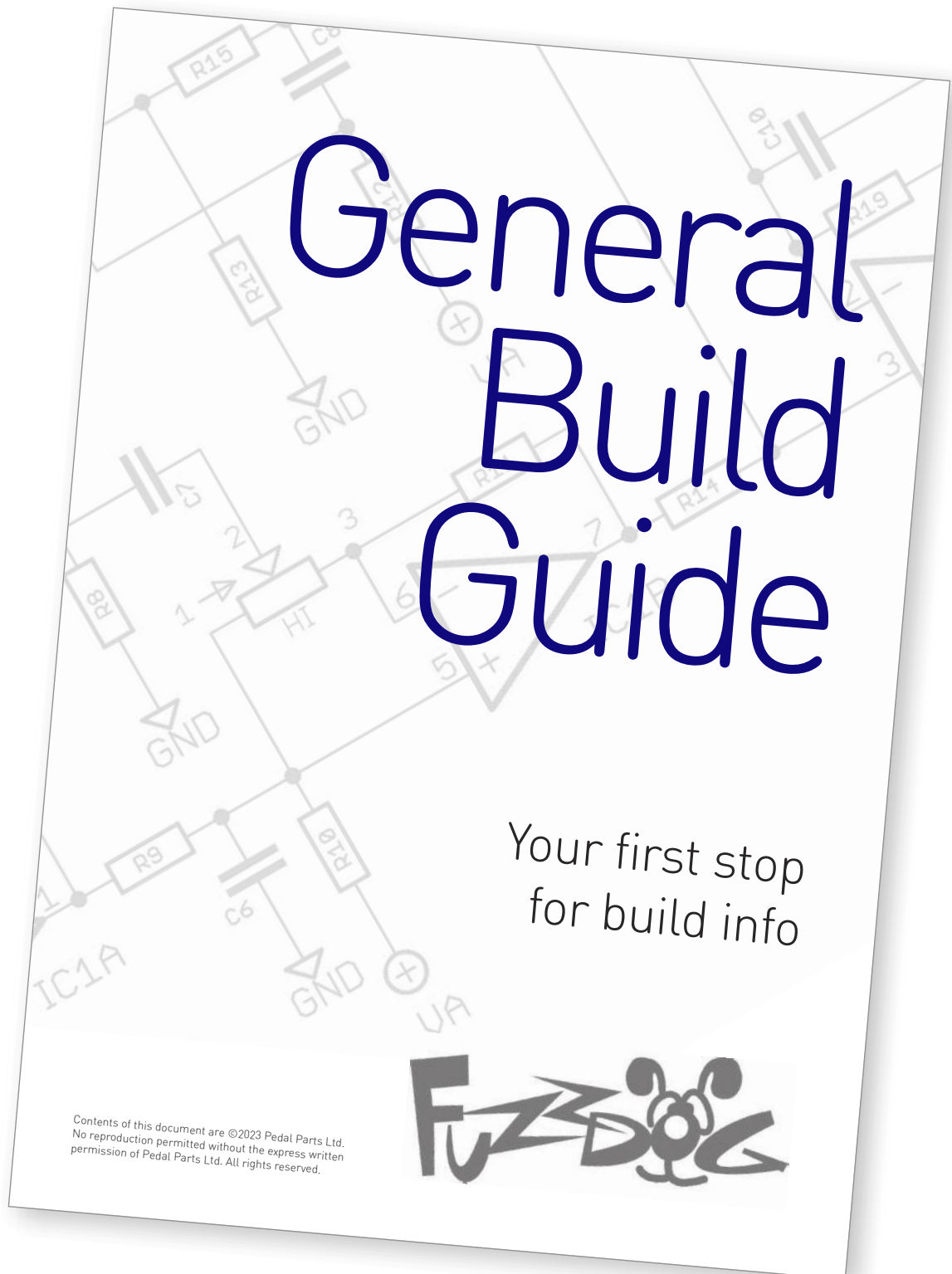
V8

Fat muscle-car engine
growl fuzz

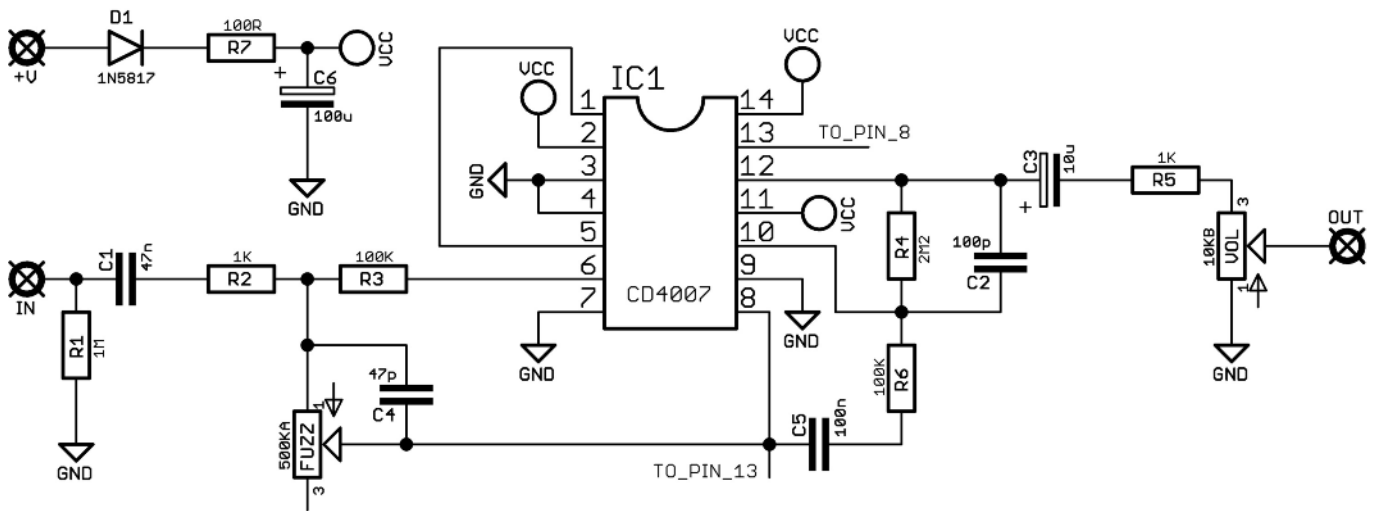


Before you dig in, ensure you download and read the **General Build Guide**.

It contains all the information you need for a successful outcome.

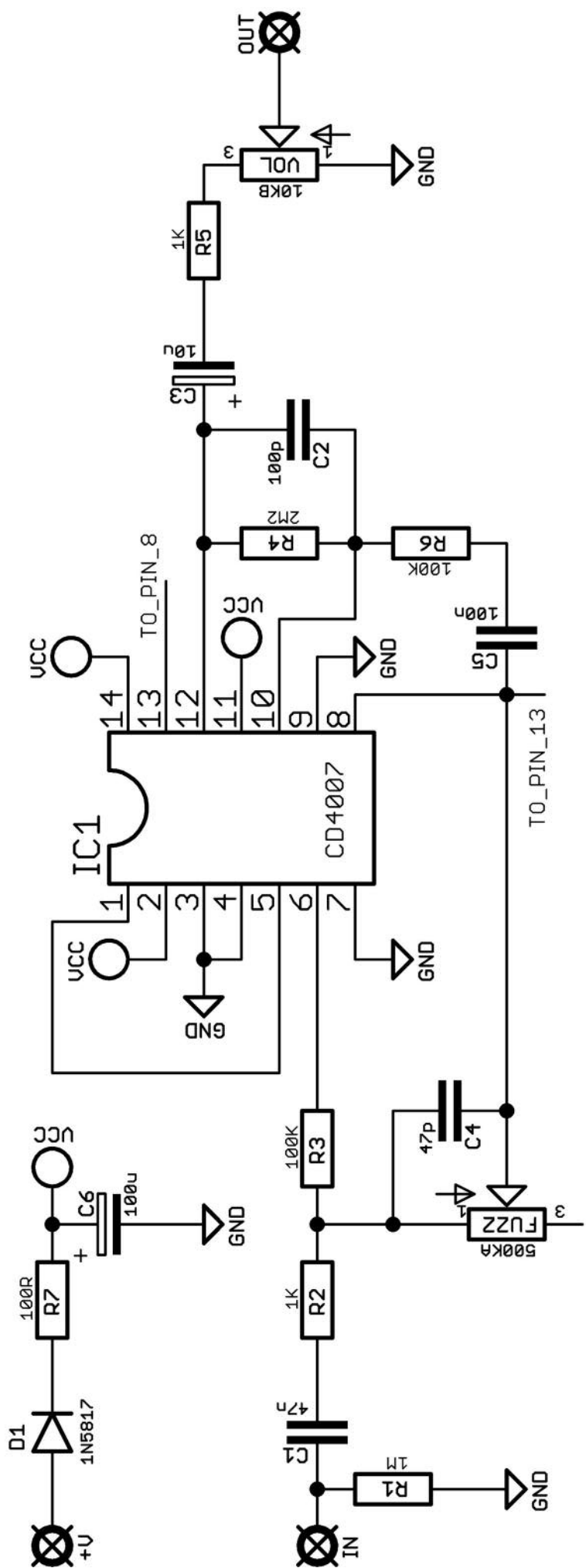


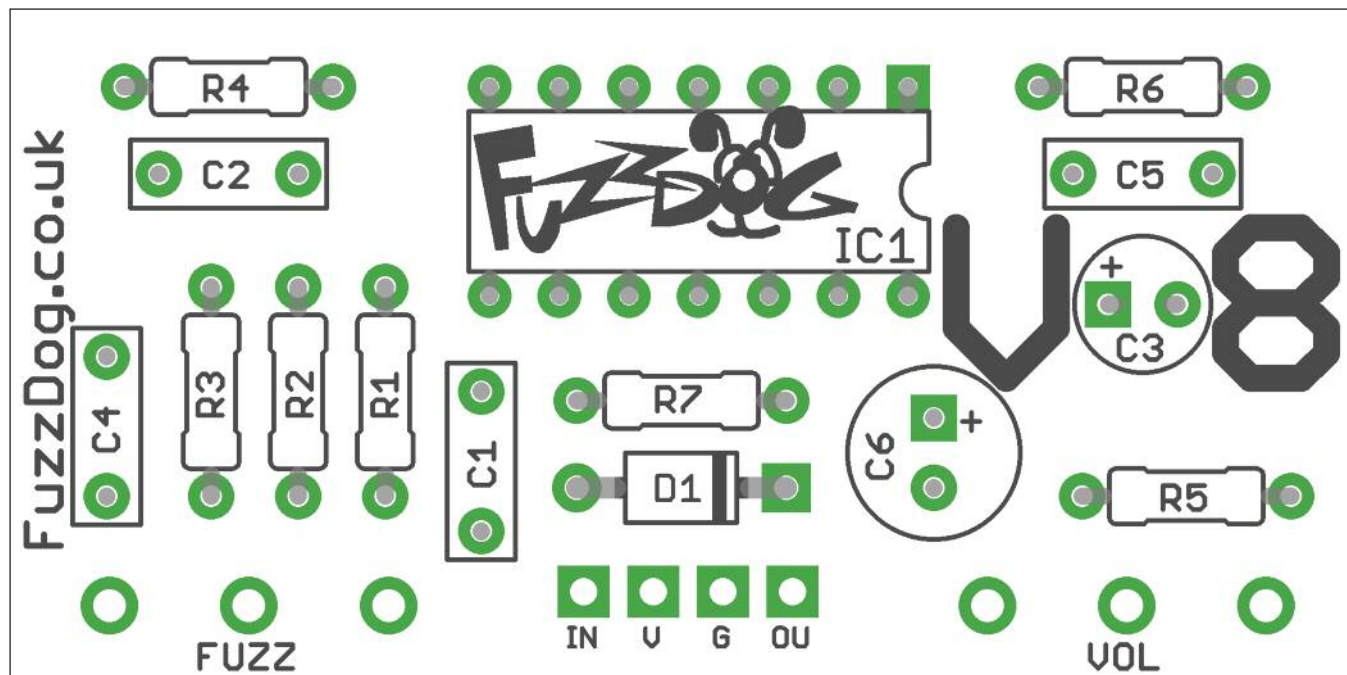
Schematics + BOM



R1	1M	C1	47n	D1	1N5817
R2	1K	C2	100p	IC1	CD4007
R3	100K	C3	10u elec	FUZZ	500KA*
R4	2M2	C4	470p	VOL	10KB
R5	1K	C5	100n		
R6	100K	C6	100u elec		
R7	100R				

*Linear in the original but what gives? It sucks.

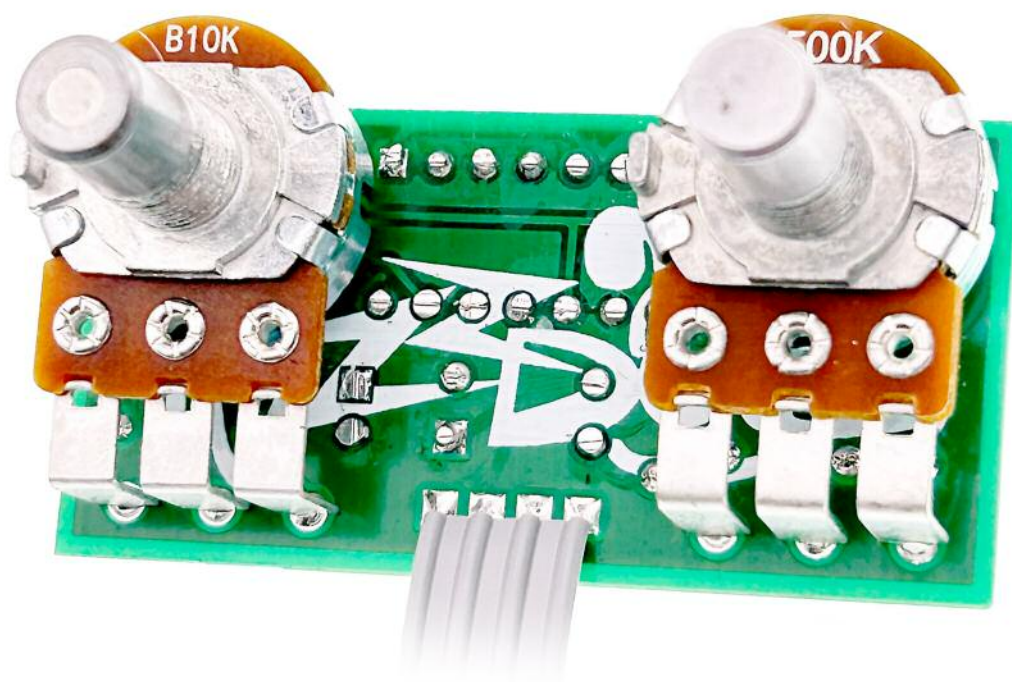




Snap the small metal tag off the pots so they can be mounted flush in the box.

You should solder all other board-mounted components before you solder the pots.

Once they're in place you'll have no access to much of the board.



Drilling template

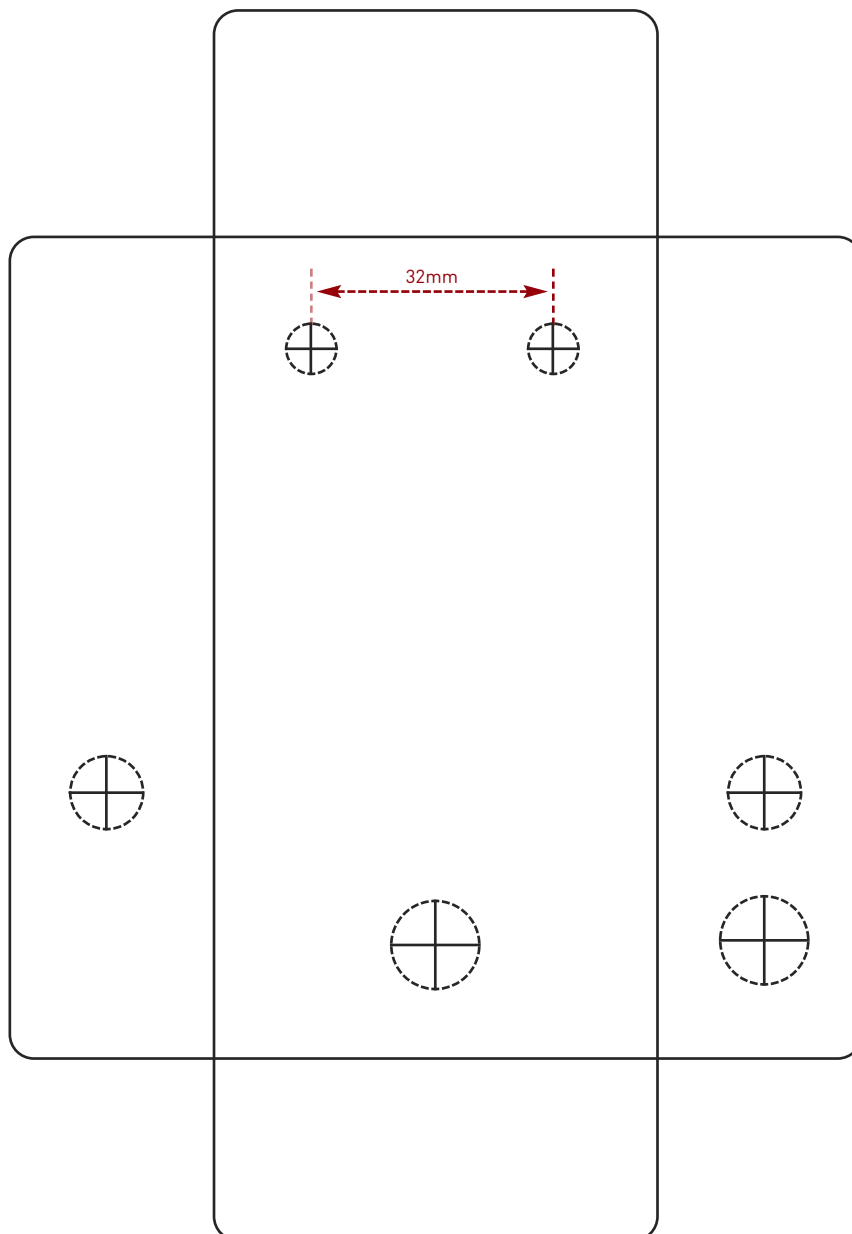
Hammond 1590B - 60 x 111 x 31mm

Drill sizes listed are minimum.

It's a good idea to add 1mm to anything mounted on the PCB that'll poke through the front of the enclosure.

Drill sizes:

Pots	7mm
Jacks	10mm
Footswitch	12mm
DC Socket	12mm
Toggle switches	6mm
Rotary switches	10mm



This template is a rough guide only. You should ensure correct marking of your enclosure before drilling. You use this template at your own risk.

Pedal Parts Ltd can accept no responsibility for incorrect drilling of enclosures.

FuzzDog.co.uk