

UglyFace

Tim Escobedo's original
box of fuzzy chaos

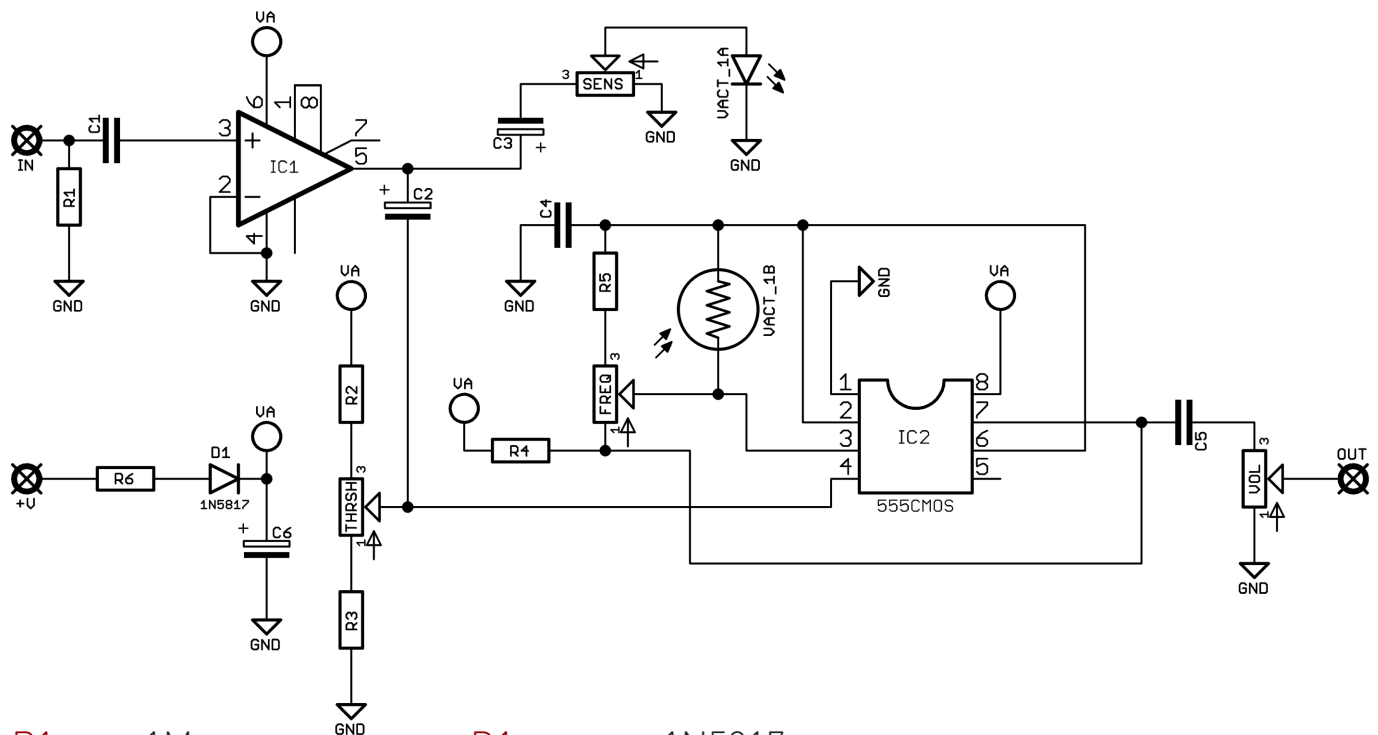


Before you dig in, ensure you download and read the **General Build Guide**.

It contains all the information you need for a successful outcome.



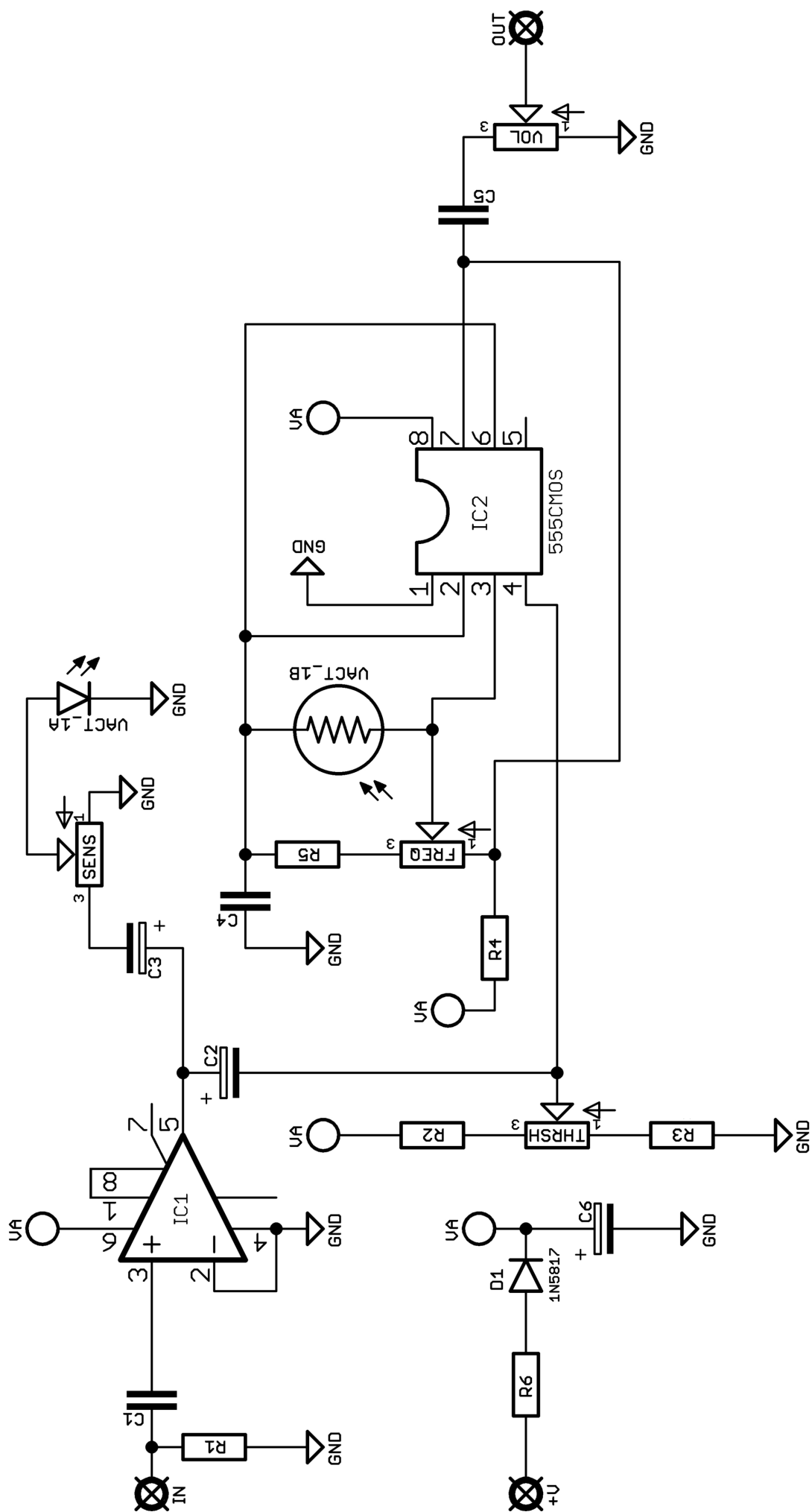
Schematic + BOM

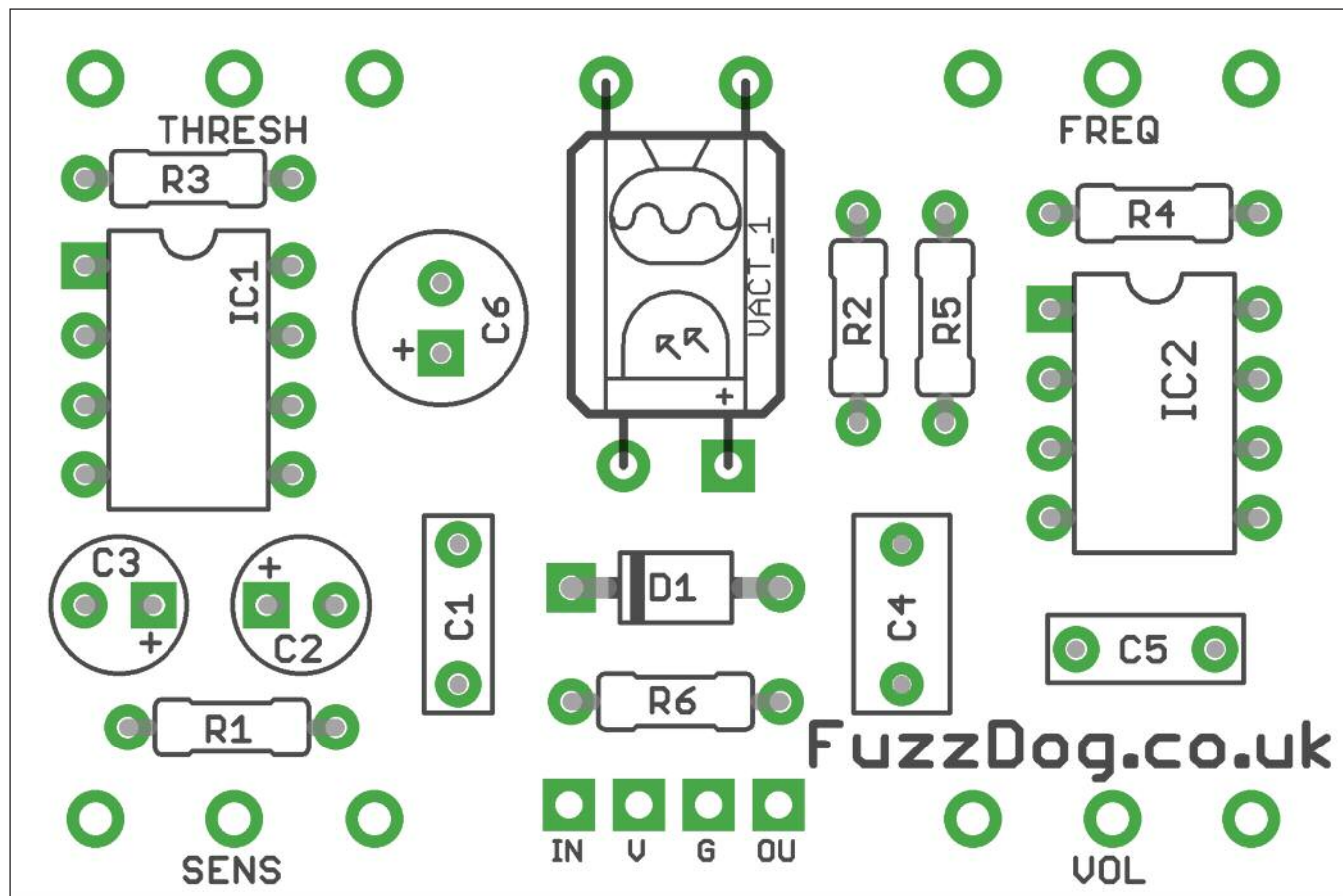


R1	1M	D1	1N5817
R2	22K	IC1	LM386-N1
R3	1K	IC2	CMOS 555
R4	100K		
R5	470R		
R6	100R		

C1	100n	FREQ	100KB
C2	2u2 elec	SENS	1KB
C3	2u2 elec	THRSH	10KB
C4	100n	VOL	100KA
C5	100n		
C6	100u elec	VACT	5mm Red LED + LDR*

*Tested with GL5539 and worked great.
Feel free to try others.

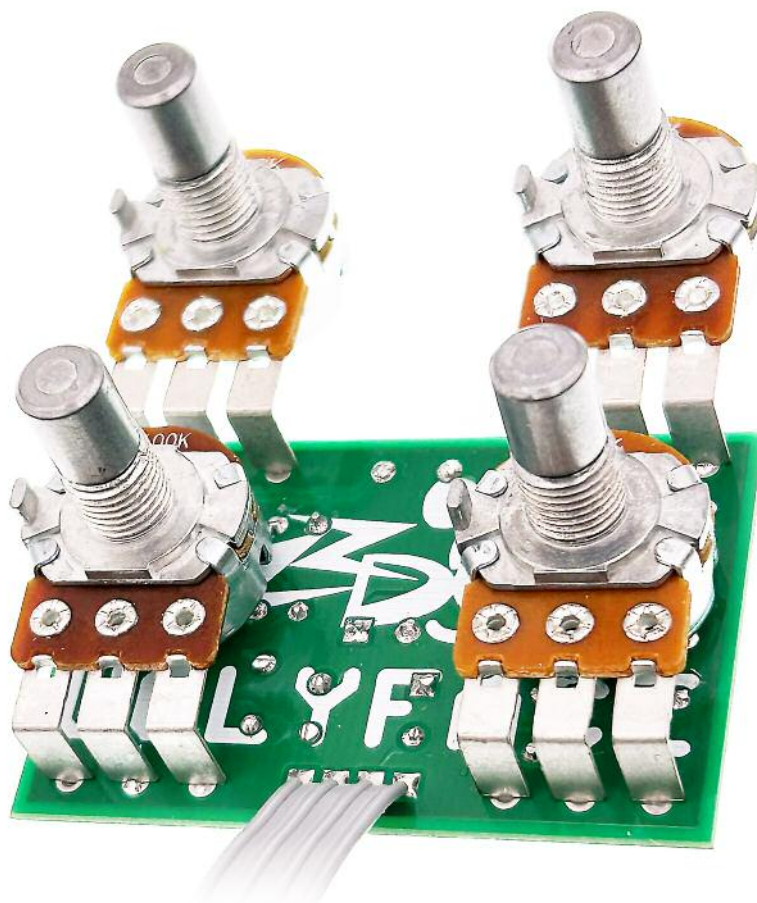




Snap the small metal tag off the pots so they can be mounted flush in the box.

You should solder all other board-mounted components before you solder the pots.

Once they're in place you'll have no access to much of the board.



Drilling template

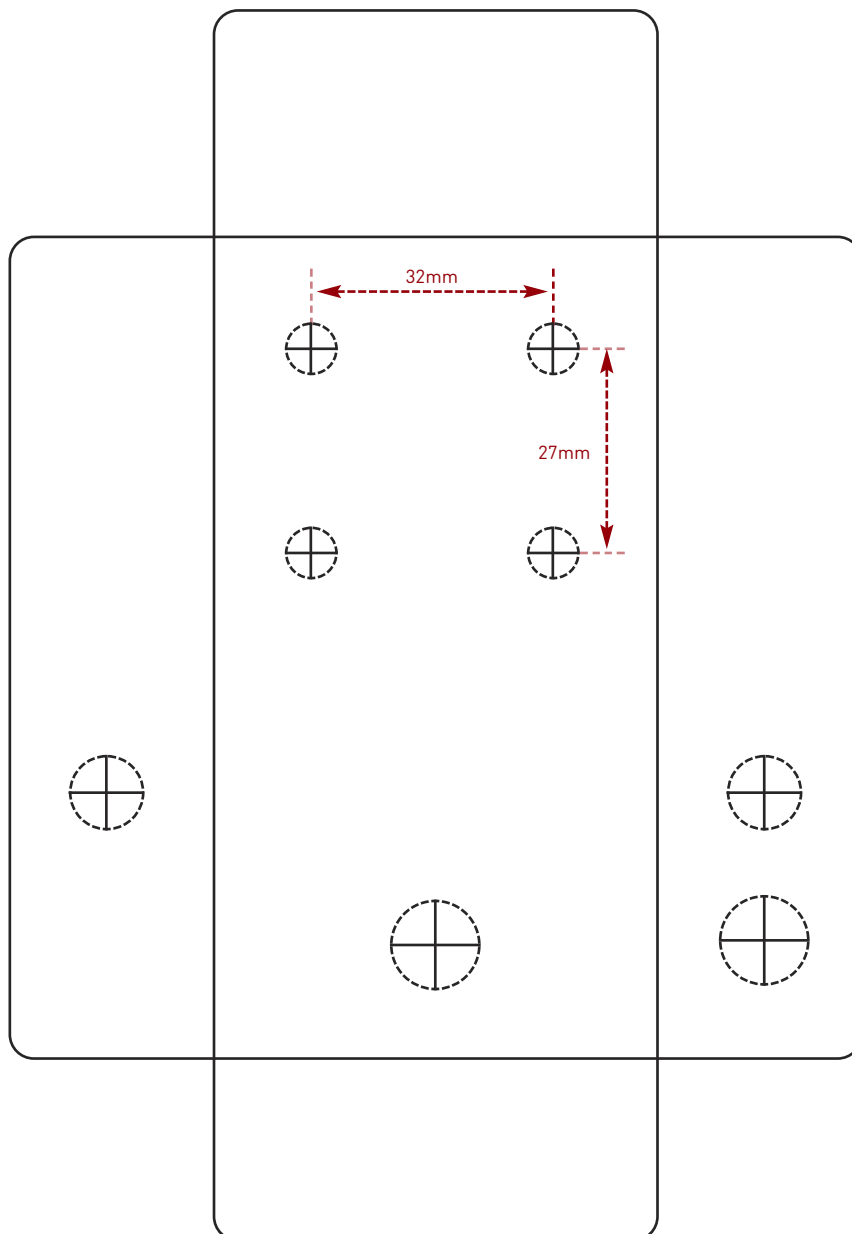
Hammond 1590B - 60 x 111 x 31mm

Drill sizes listed are minimum.

It's a good idea to add 1mm to anything mounted on the PCB that'll poke through the front of the enclosure.

Drill sizes:

Pots	7mm
Jacks	10mm
Footswitch	12mm
DC Socket	12mm
Toggle switches	6mm
Rotary switches	10mm



This template is a rough guide only. You should ensure correct marking of your enclosure before drilling. You use this template at your own risk.

Pedal Parts Ltd can accept no responsibility for incorrect drilling of enclosures.

FuzzDog.co.uk