

Tweed Tone

Little box, big range of
Tweed-style tones on tap

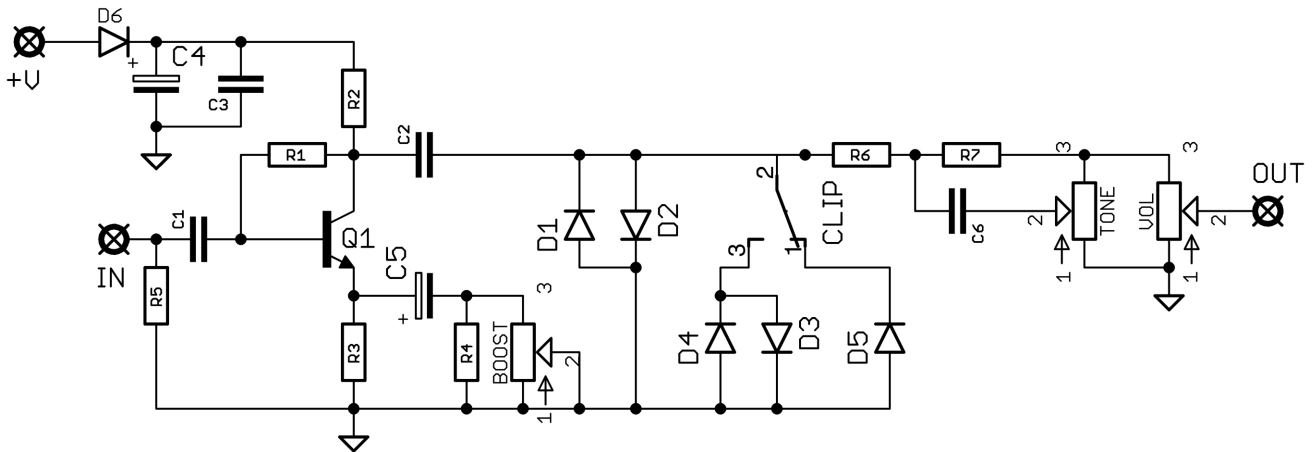


Before you dig in, ensure you download and read the **General Build Guide**.

It contains all the information you need for a successful outcome.



Schematic + BOM

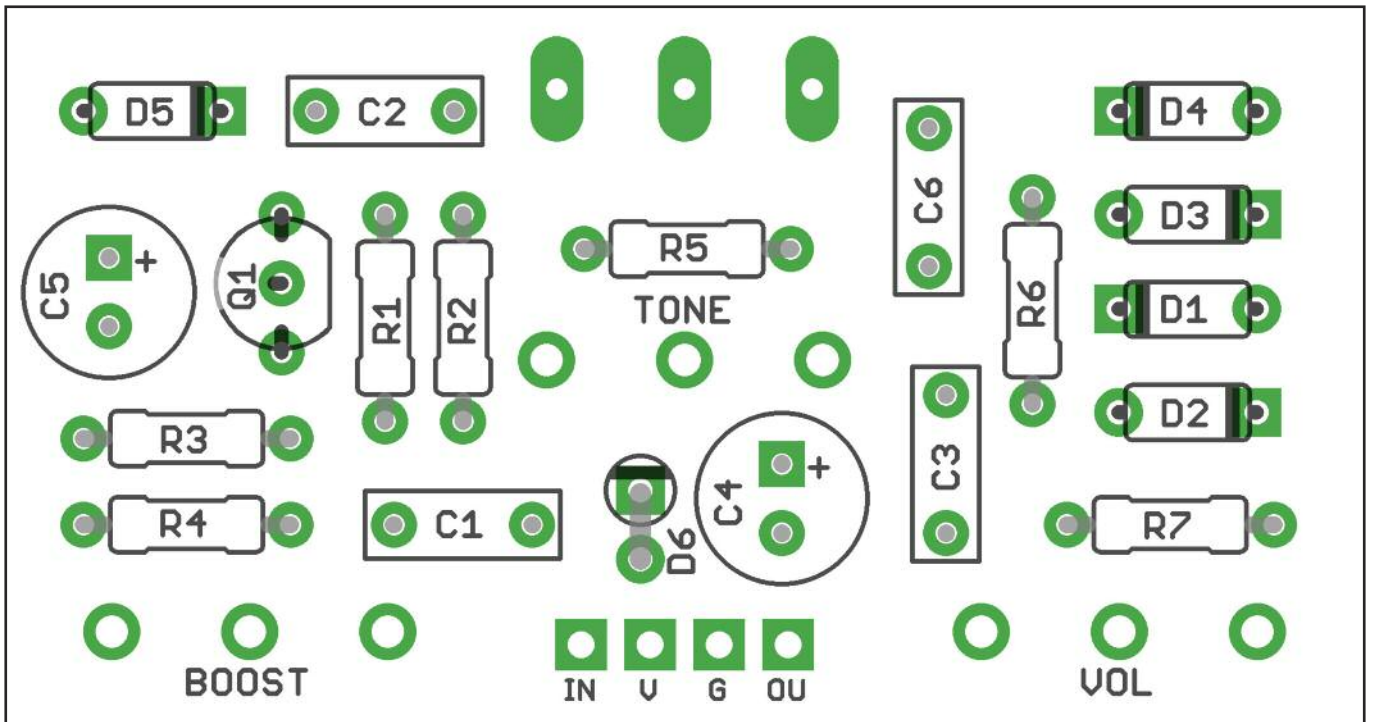


R1	3M3	C1	47n	D1-2	1N4148
R2	3K3	C2	100n	D3-5	BAT46
R3	330R	C3	100n	D6	1N5817
R4	1K	C4	100u elec	Q1	2N5088
R5	1M	C5	47u elec	S1	SPDT ON-OFF-ON
R6	10K	C6	22n	BOOST	1KC*
R7	47K			TONE	100KA
				VOL	100KB

*You can use 1KB but the sweep is better with C.

Feel free to experiment with the tone section (R6-7, C6). It's based on the AMZ SWTC2, and there's plenty of information out there.

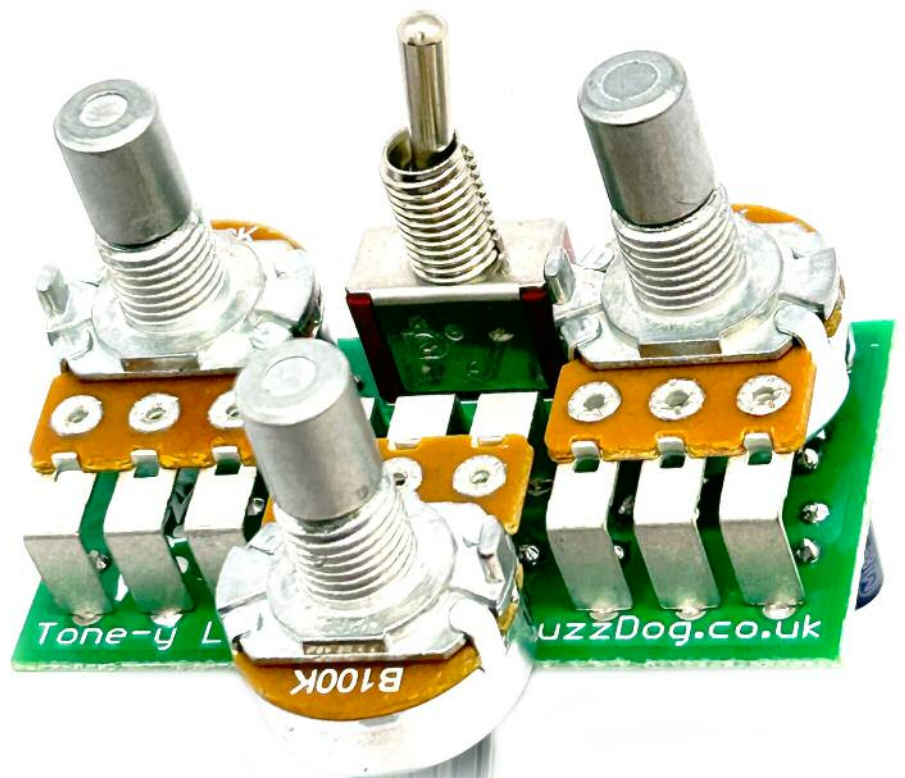
<http://www.muzique.com/lab/swtc.htm>



Snap the small metal tag off the pots so they can be mounted flush in the box.

You should solder all other board-mounted components before you solder the pots.

Once they're in place you'll have no access to much of the board.



Drilling template

Hammond 1590B

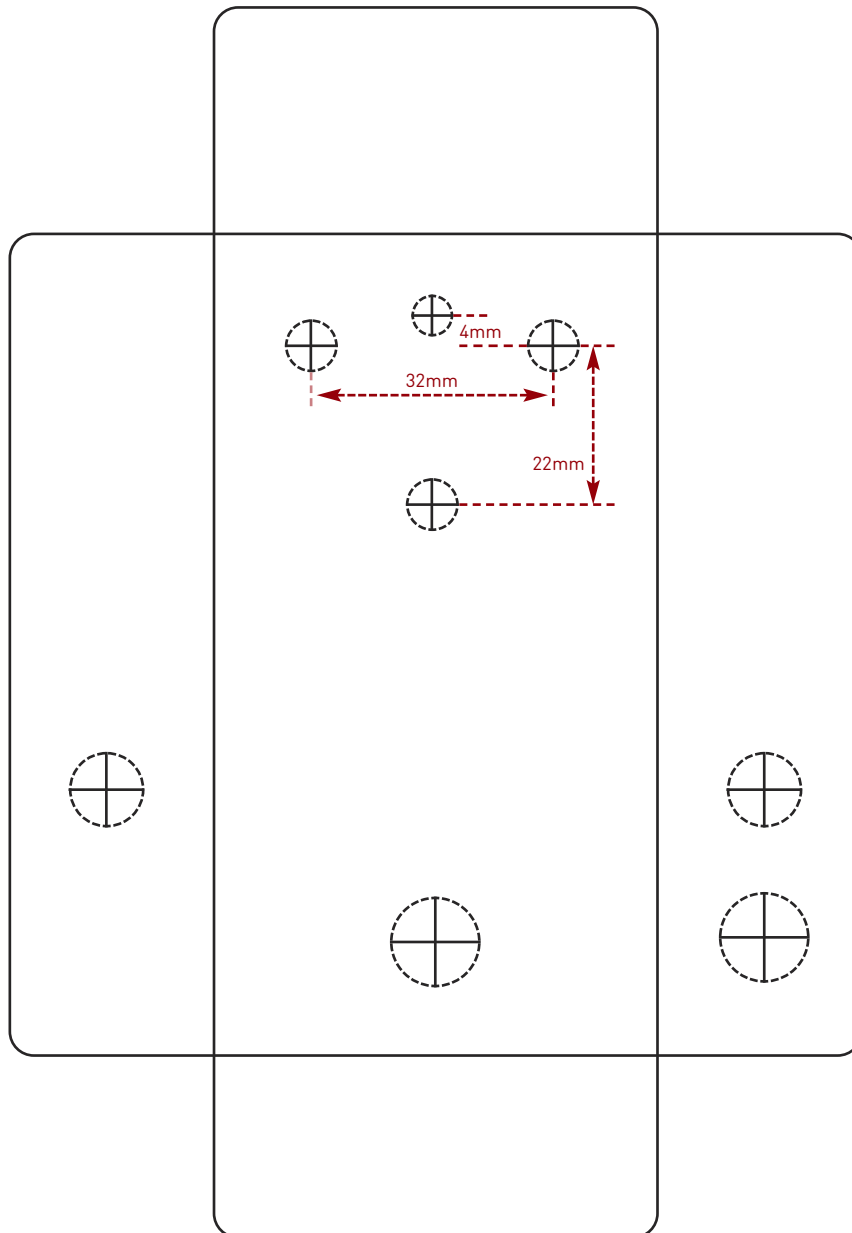
60 x 111 x 31mm

Recommended drill sizes:

Pots	7mm
Jacks	10mm
Footswitch	12mm
DC Socket	12mm
Toggle switches	6mm

It's a good idea to drill the pot and toggle switch holes 1mm bigger if you're board-mounting them.

Wiggle room = good!



This template is a rough guide only. You should ensure correct marking of your enclosure before drilling. You use this template at your own risk.

Pedal Parts Ltd can accept no responsibility for incorrect drilling of enclosures.

FuzzDog.co.uk