



Tweak Rite

Mosrite FuzzRite with
a useful twist

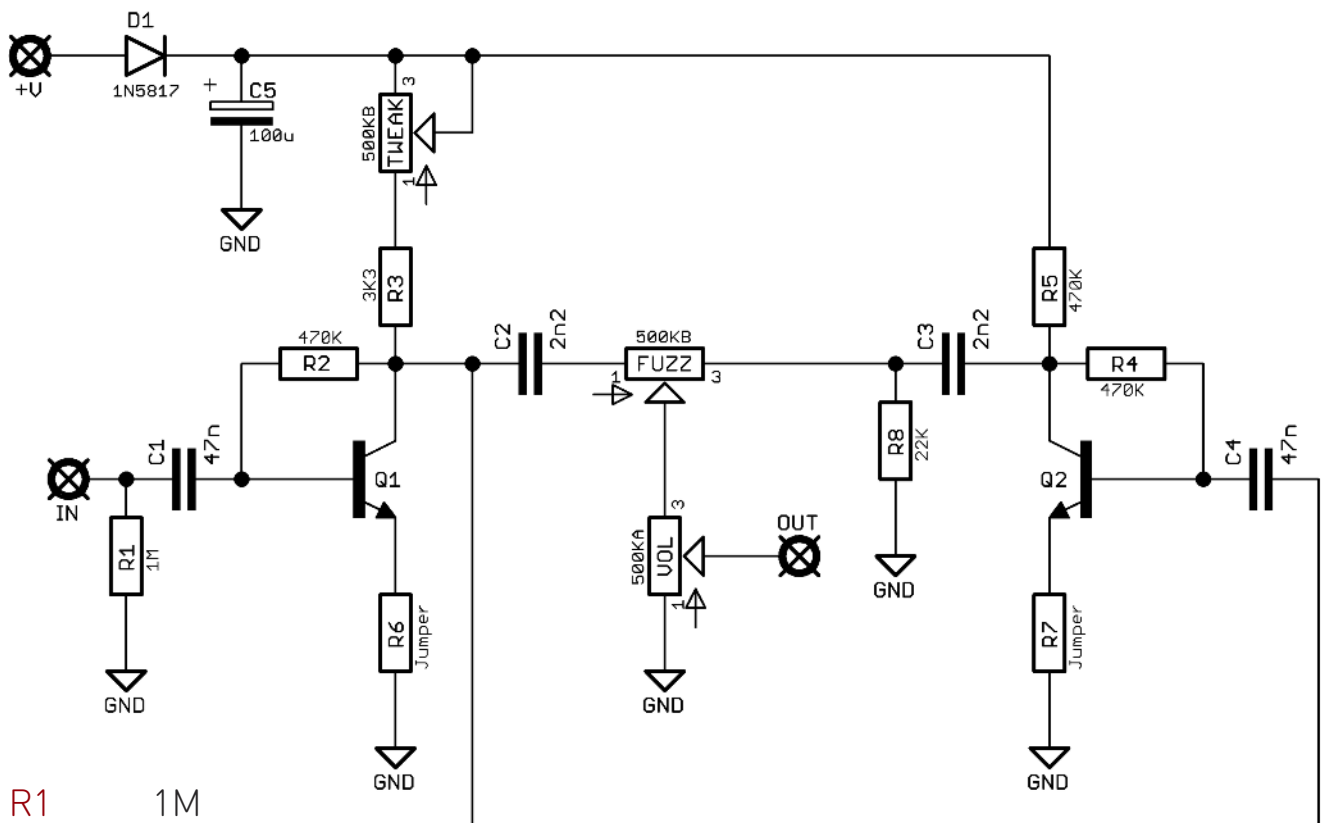


Before you dig in, ensure you download and read the **General Build Guide**.

It contains all the information you need for a successful outcome.



Schematic + BOM



R1	1M
R2	470K
R3	3K3
R4	470K
R5	470K
R6	Jumper
R7	Jumper
R8	22K
C1	47n
C2	2n2
C3	2n2
C4	47n
C5	100u elec

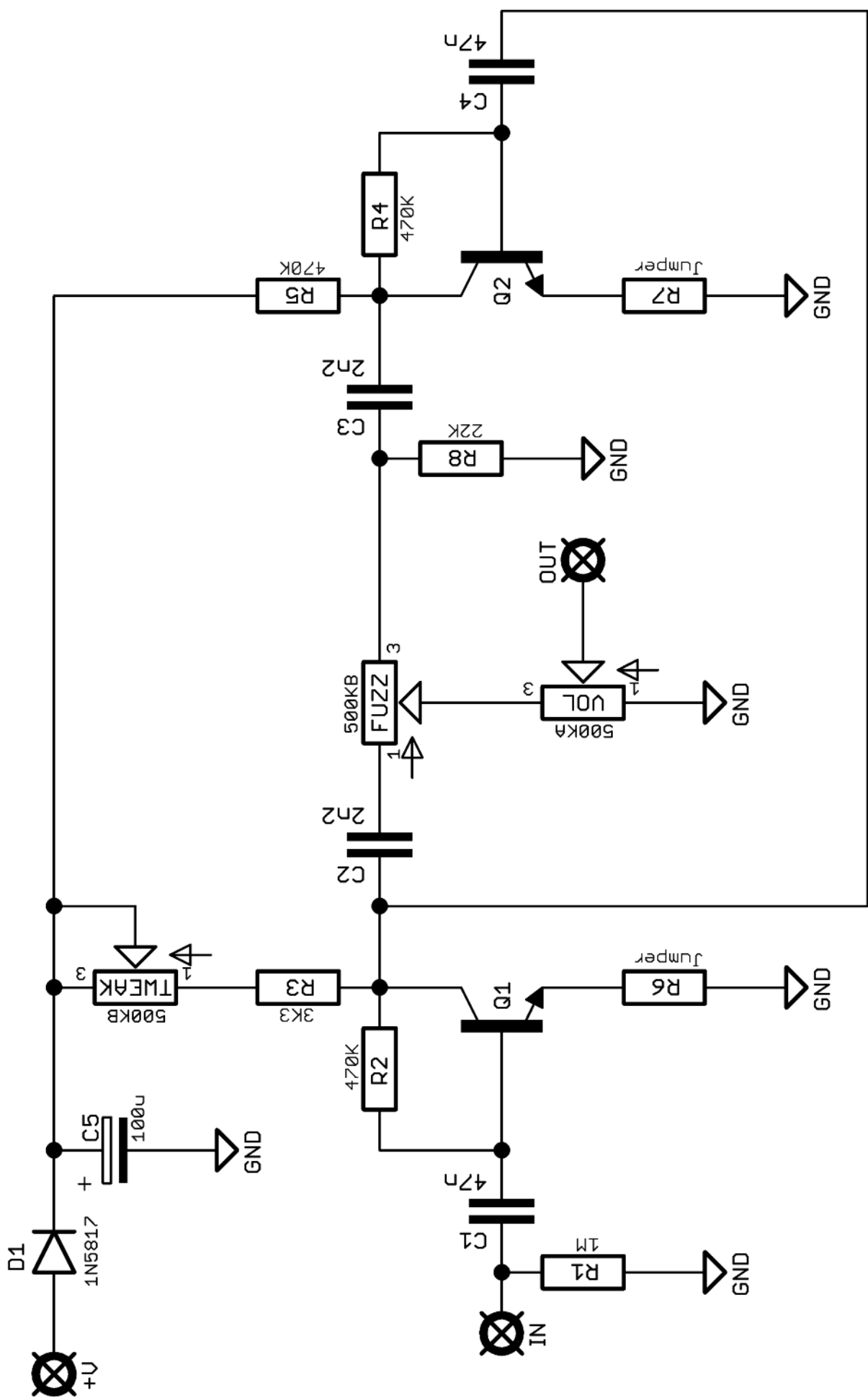
Q1	BC337-16*
Q2	BC337-16*
D1	1N5817

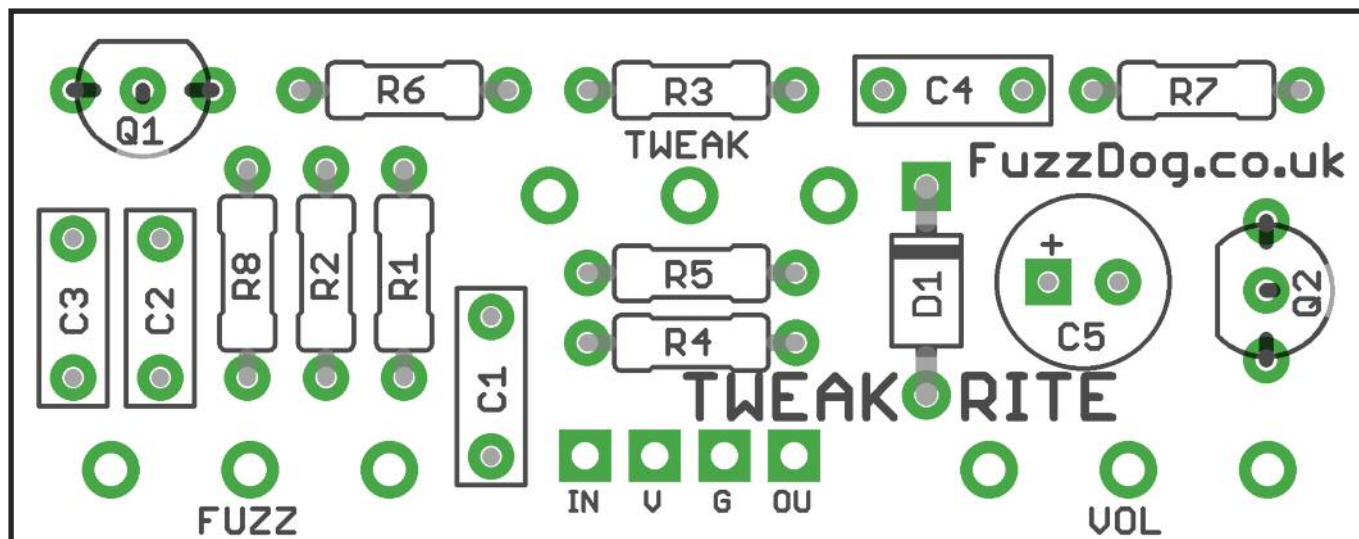
FUZZ	500KB
VOL	500KA**
TWEAK	500KB

*Experiment with any low gain NPN silicon transistors. BC337-16 are around 150hFE, and give a really skanky 60s fuzz tone which we love. Go slightly higher for a different feel. 2N3904 around 200hFE change the nature of the fuzz quite a lot. IMPORTANT - the cover image shows the board with BC337-16, which should be placed on the PCB reversed compared to the screen print. Others such as 2N3904, 2N5088 etc should follow the screen print guide.

**We've increased the volume pot value to make the circuit a bit louder at full volume. It thickens up the tone a tad, but not enough to kill the skank. By all means reduce it to 50KA if you prefer, but really - don't!

R6-7 have been included so you can reduce the gain if it's a bit too much for you. 100-200R will tame the beast.

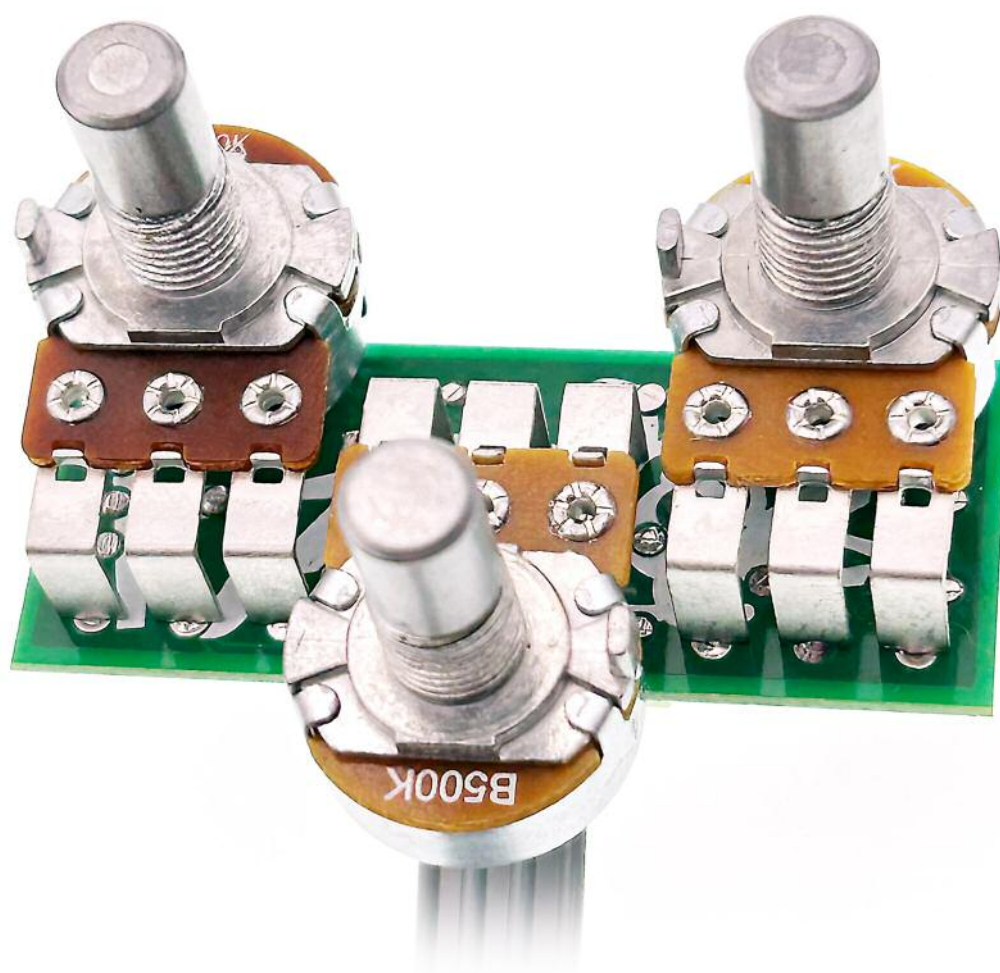




Snap the small metal tag off the pots so they can be mounted flush in the box.

You should solder all other board-mounted components before you solder the pots.

Once they're in place you'll have no access to much of the board.



Drilling template

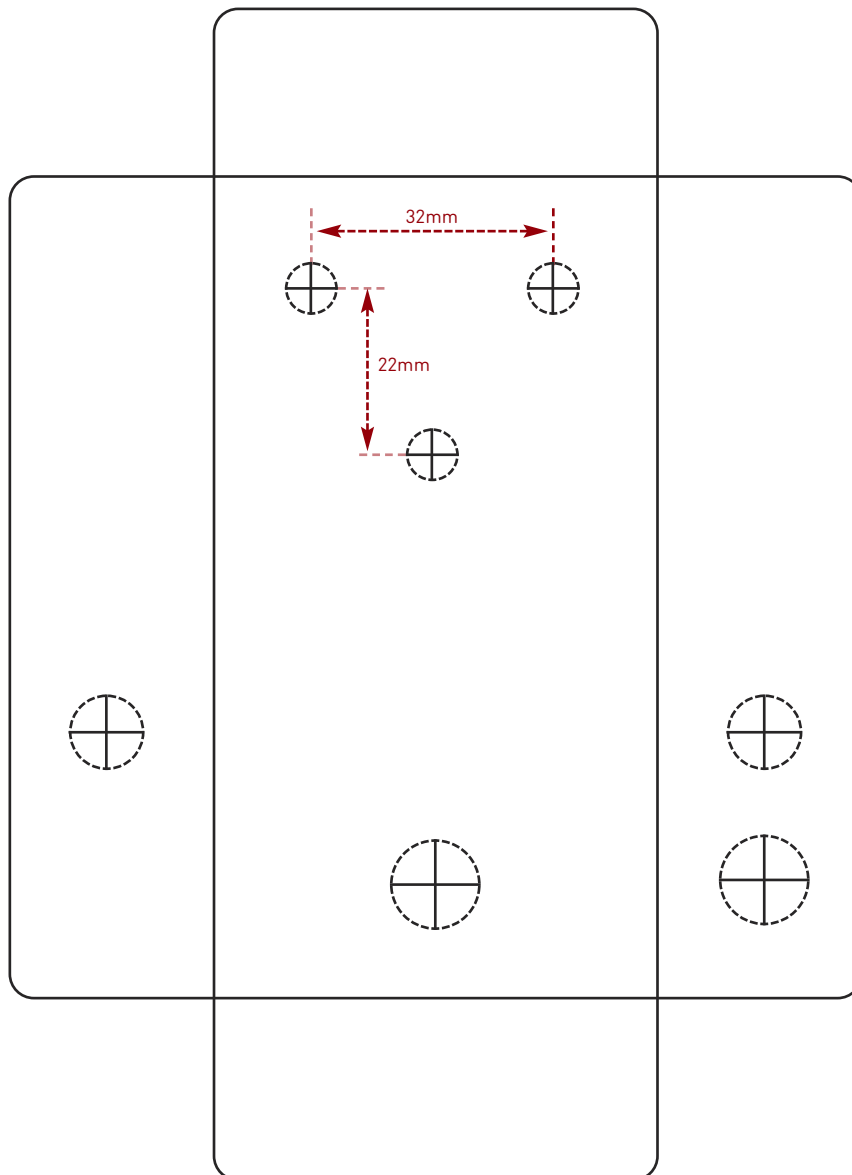
Hammond 1590B - 60 x 111 x 31mm

Drill sizes listed are minimum.

It's a good idea to add 1mm to anything mounted on the PCB that'll poke through the front of the enclosure.

Drill sizes:

Pots	7mm
Jacks	10mm
Footswitch	12mm
DC Socket	12mm
Toggle switches	6mm
Rotary switches	10mm



This template is a rough guide only. You should ensure correct marking of your enclosure before drilling. You use this template at your own risk.

Pedal Parts Ltd can accept no responsibility for incorrect drilling of enclosures.

FuzzDog.co.uk