

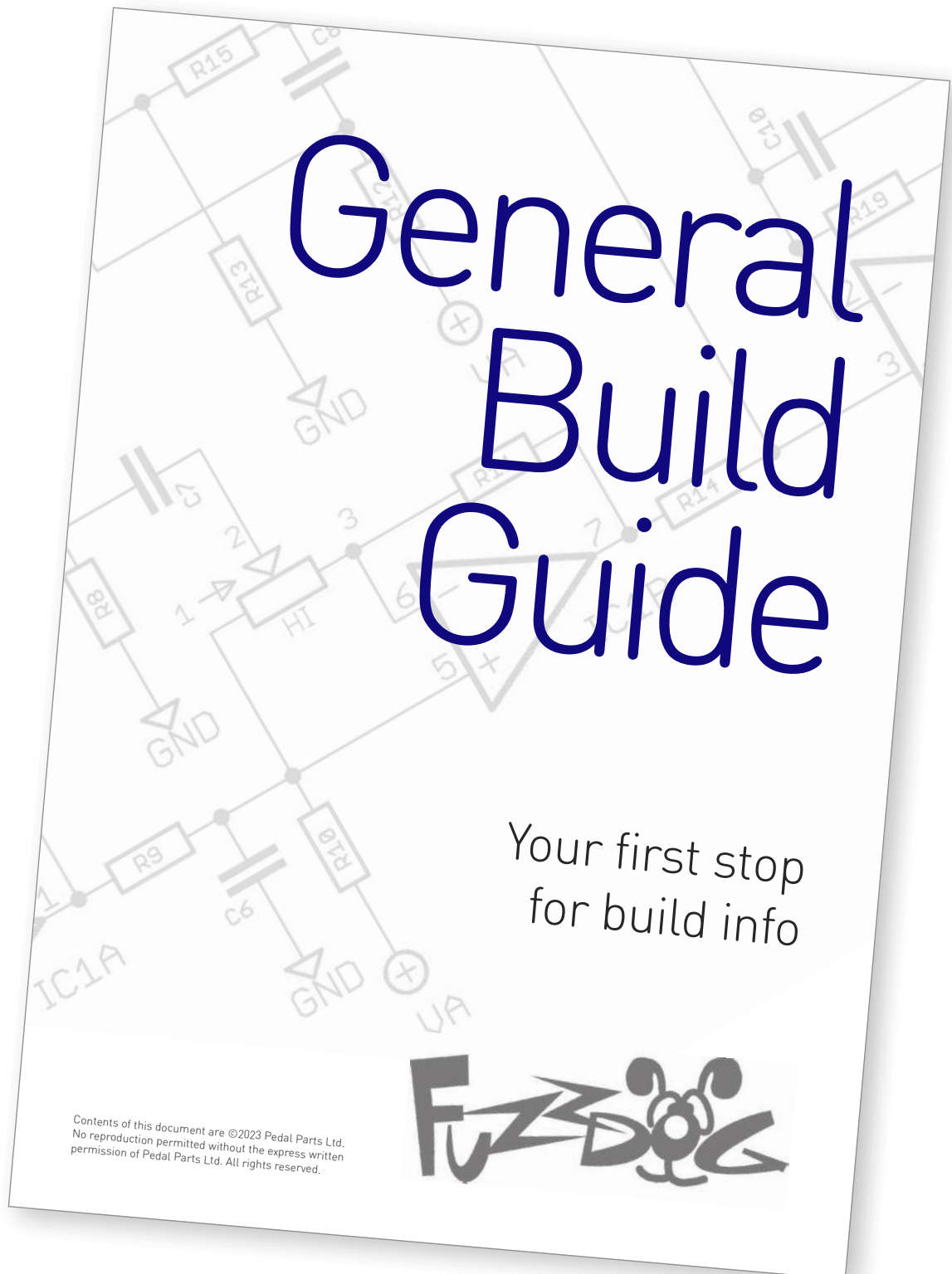
# Tube Steak

Beefed-up Red Llama,  
back end of the Fat Sandwich

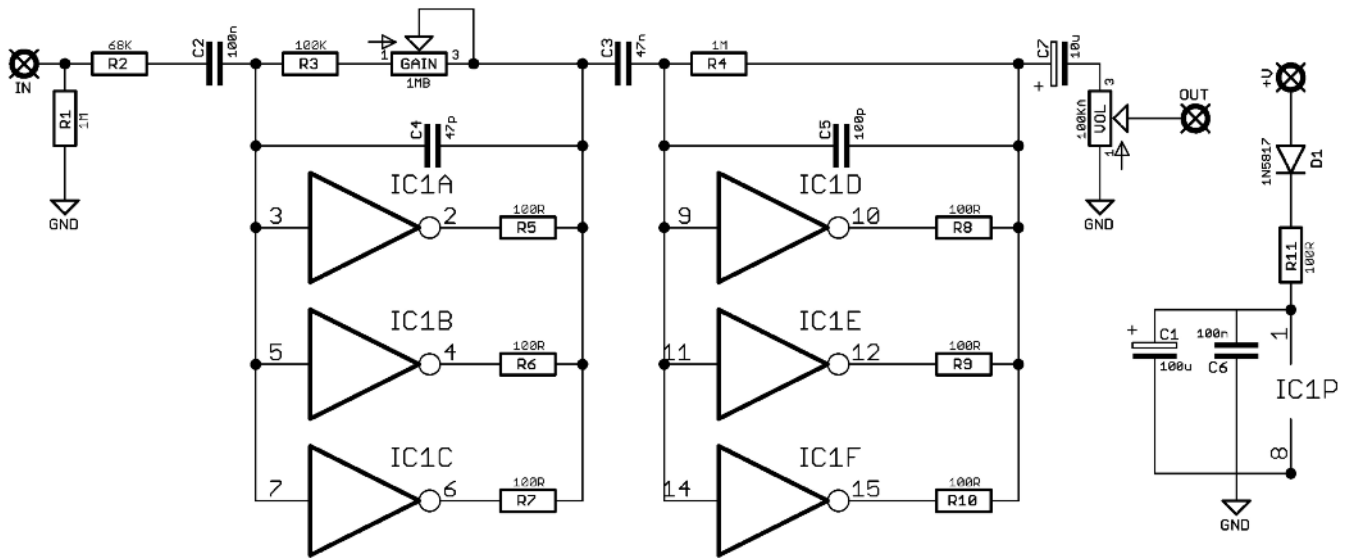


Before you dig in, ensure you download and read the **General Build Guide**.

It contains all the information you need for a successful outcome.

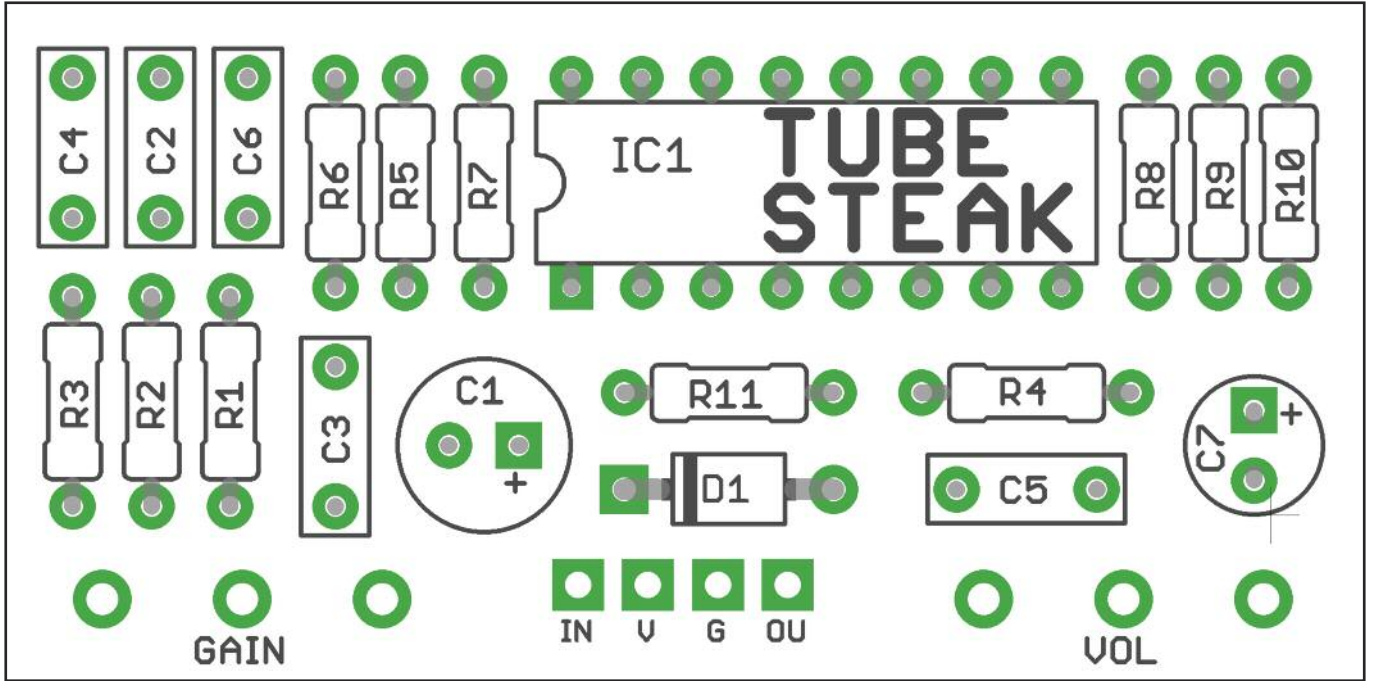


# Schematic + BOM



R1	1M	C1	100u elec	D1	1N5817
R2	68K	C2	100n	IC1	CD4049UBE
R3	100K	C3	47n	GAIN	1MB
R4	1M	C4	47p	VOL	100KA
R5	100R	C5	100p		
R6	100R	C6	100n		
R7	100R	C7	10u elec		
R8	100R				
R9	100R				
R10	100R				
R11	100R				





Snap the small metal tags off the pots so they can be mounted flush in the box.

You should solder all other board-mounted components before you solder the pots.

Once they're in place you'll have no access to much of the board.

# Drilling template

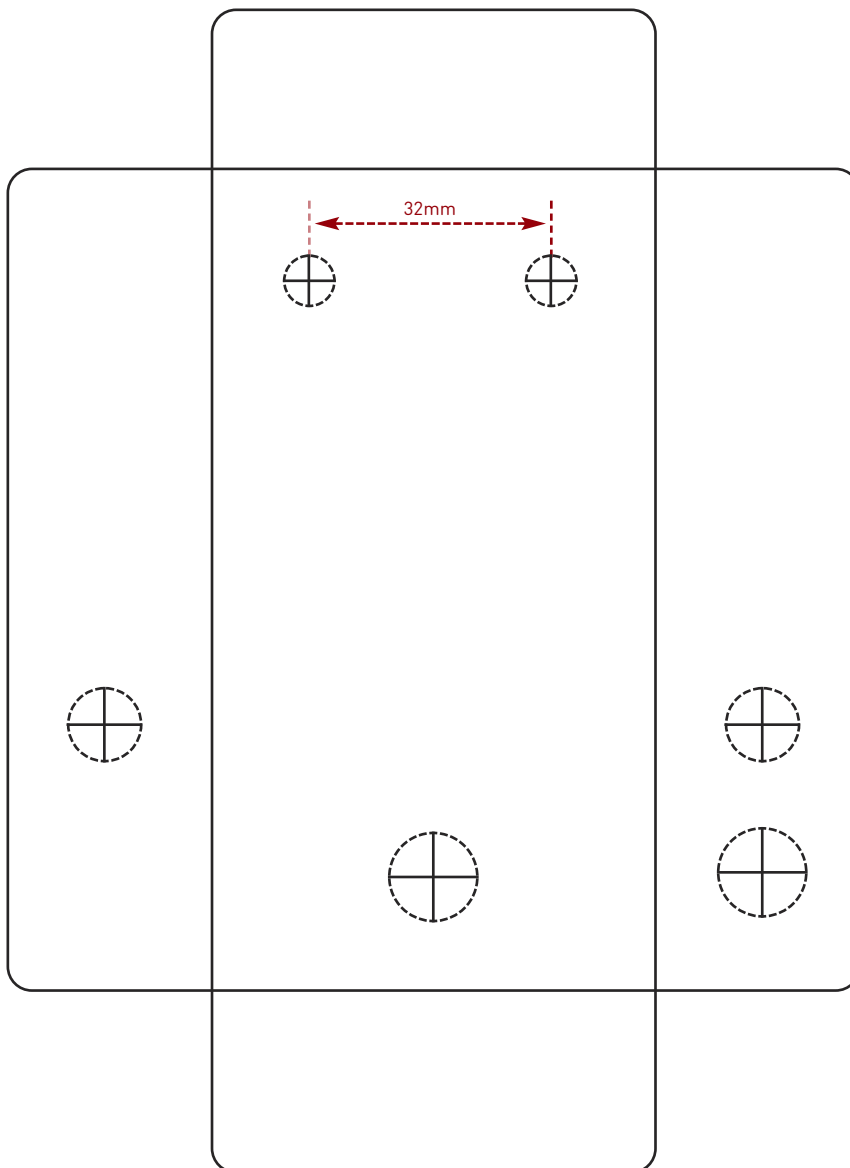
**Hammond 1590B - 60 x 111 x 31mm**

Drill sizes listed are minimum.

It's a good idea to add 1mm to anything mounted on the PCB that'll poke through the front of the enclosure.

Drill sizes:

Pots	7mm
Jacks	10mm
Footswitch	12mm
DC Socket	12mm
Toggle switches	6mm
Rotary switches	10mm



This template is a rough guide only. You should ensure correct marking of your enclosure before drilling. You use this template at your own risk.

Pedal Parts Ltd can accept no responsibility for incorrect drilling of enclosures.

[FuzzDog.co.uk](http://FuzzDog.co.uk)