

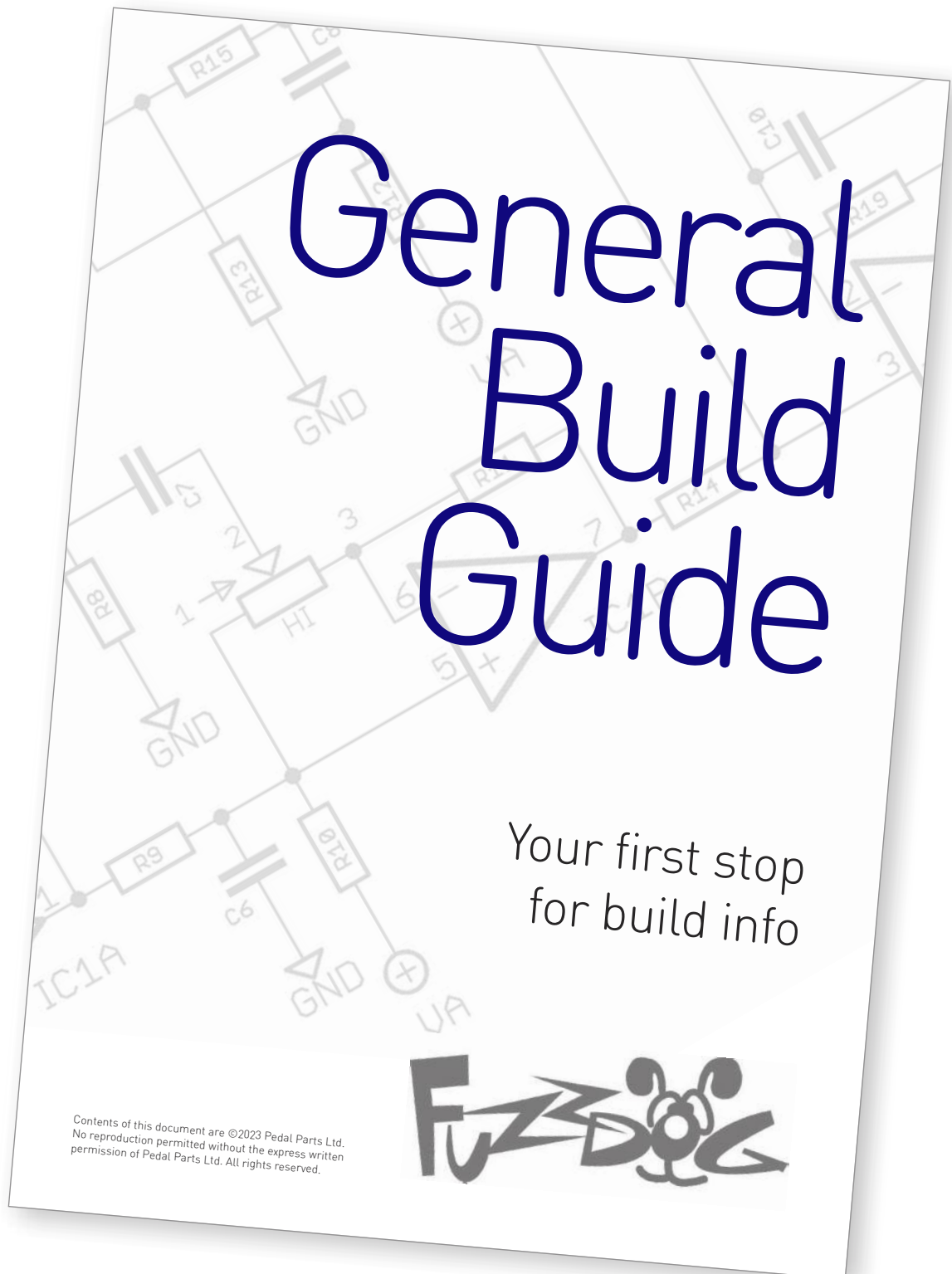
Tone Mallet

10 Tons of Rocket Fuel

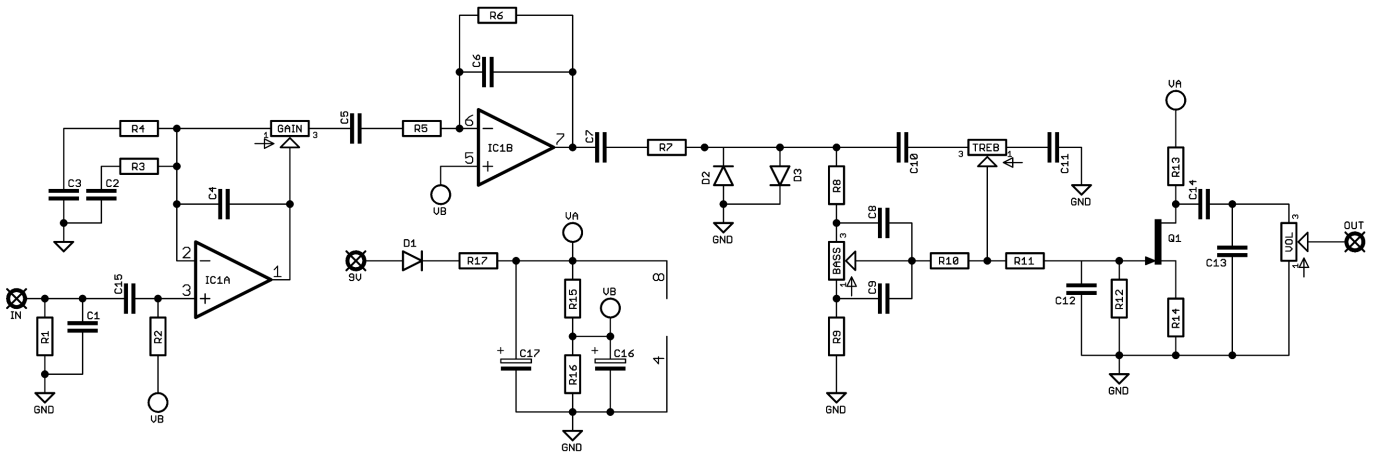


Before you dig in, ensure you download and read the **General Build Guide**.

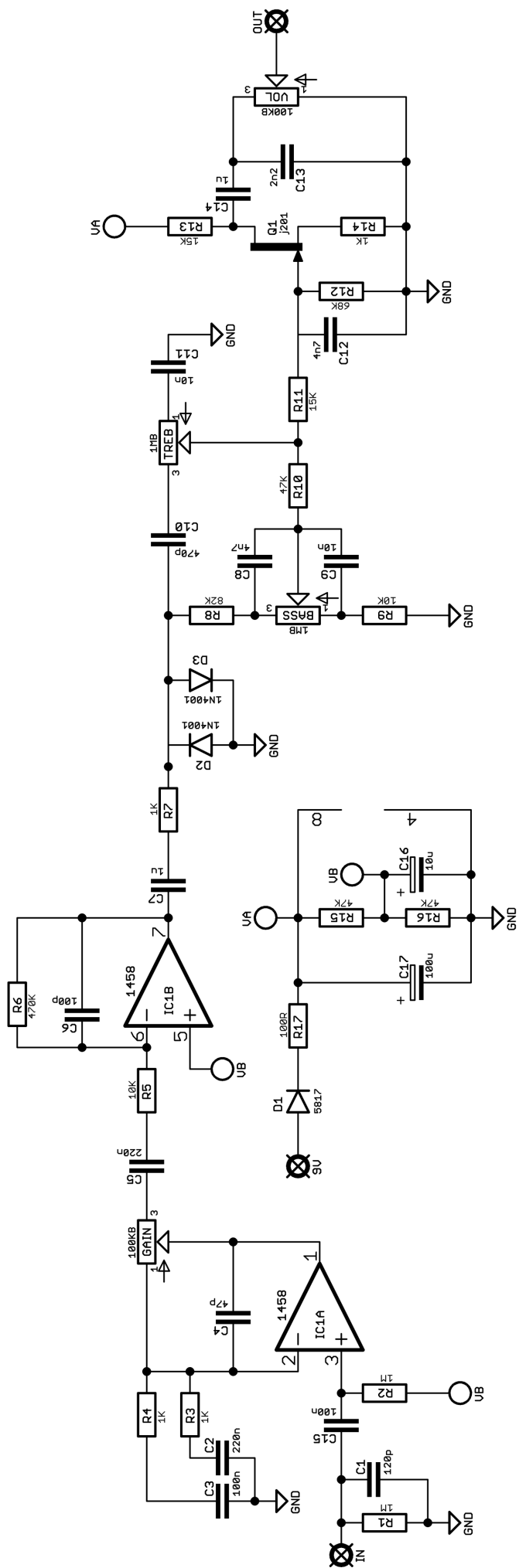
It contains all the information you need for a successful outcome.

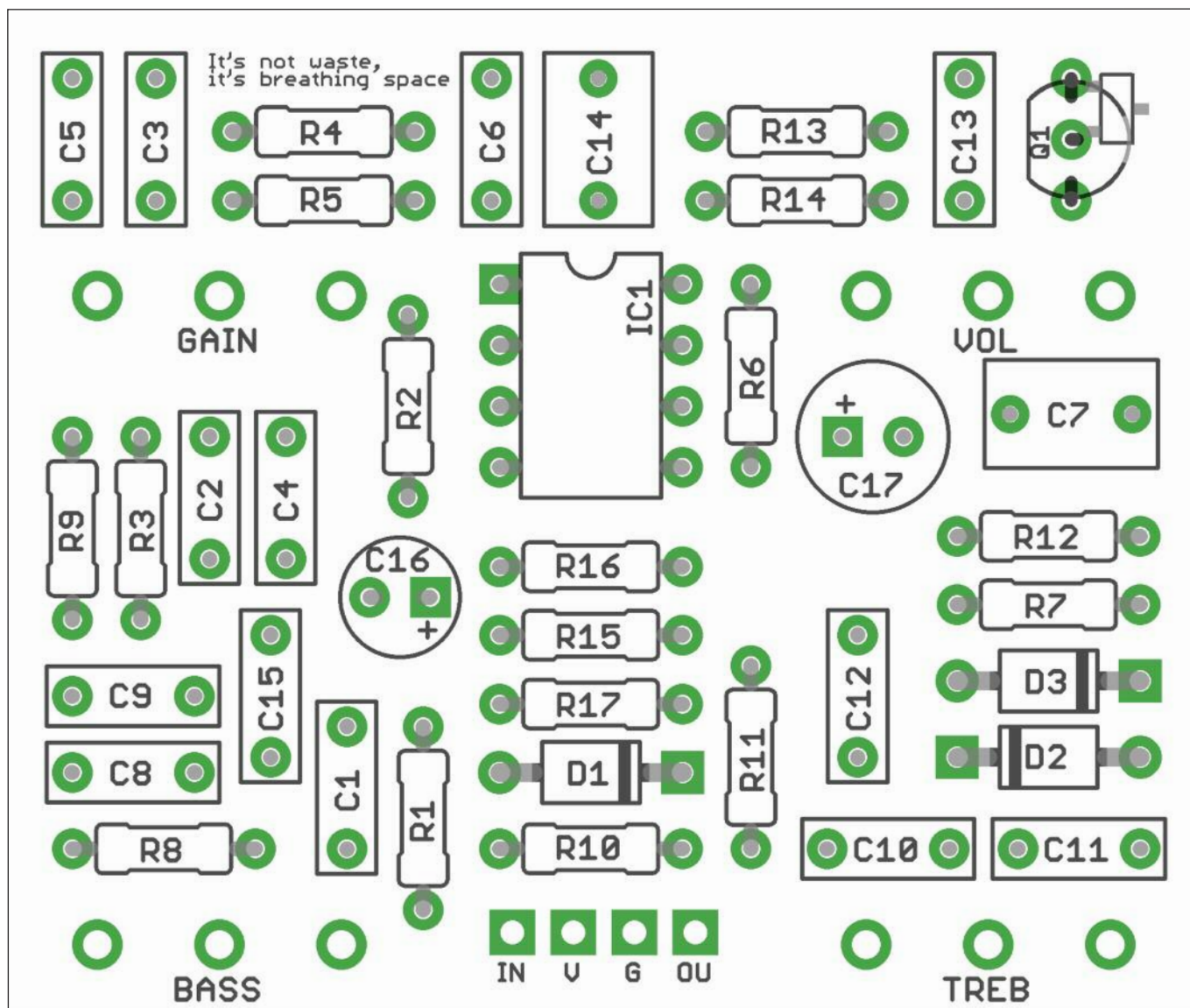


Schematic + BOM



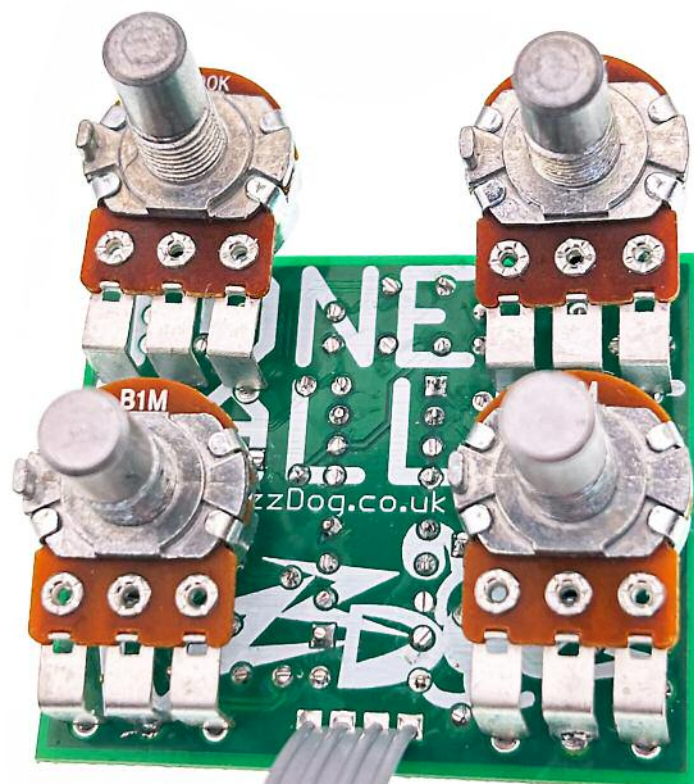
R1	1M	C1	120p	D1	1N5817
R2	1M	C2	220n	D2-3	1N4001
R3	1K	C3	100n		
R4	1K	C4	47p	Q1	J201/MMBFJ201
R5	10K	C5	220n		
R6	470K	C6	100p	IC1	1458
R7	1K	C7	1u		
R8	82K	C8	4n7	BASS	1MB
R9	10K	C9	10n	GAIN	100KB
R10	47K	C10	470p	TREB	1MB
R11	15K	C11	10n	VOL	100KB
R12	68K	C12	4n7		
R13	15K	C13	2n2		
R14	1K	C14	1u		
R15	47K	C15	100n		
R16	47K	C16	10u elec		
R17	100R	C17	100u elec		





Snap the small metal tag off the pots so they can be mounted flush in the box.

You should solder all other board-mounted components before you solder the pot. Once they're in place you'll have no access to much of the board.



Drilling template

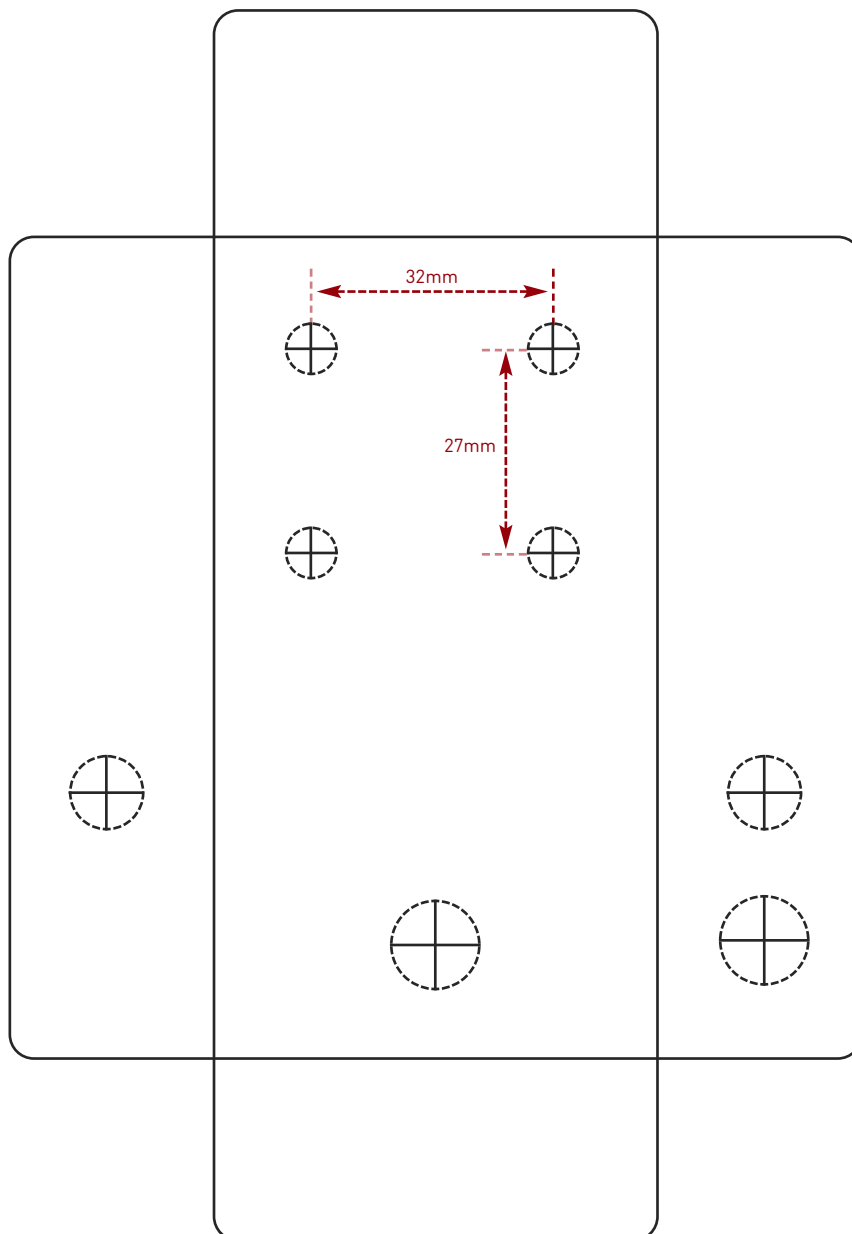
Hammond 1590B - 60 x 111 x 31mm

Drill sizes listed are minimum.

It's a good idea to add 1mm to anything mounted on the PCB that'll poke through the front of the enclosure.

Drill sizes:

Pots	7mm
Jacks	10mm
Footswitch	12mm
DC Socket	12mm
Toggle switches	6mm
Rotary switches	10mm



This template is a rough guide only. You should ensure correct marking of your enclosure before drilling. You use this template at your own risk.

Pedal Parts Ltd can accept no responsibility for incorrect drilling of enclosures.

FuzzDog.co.uk