

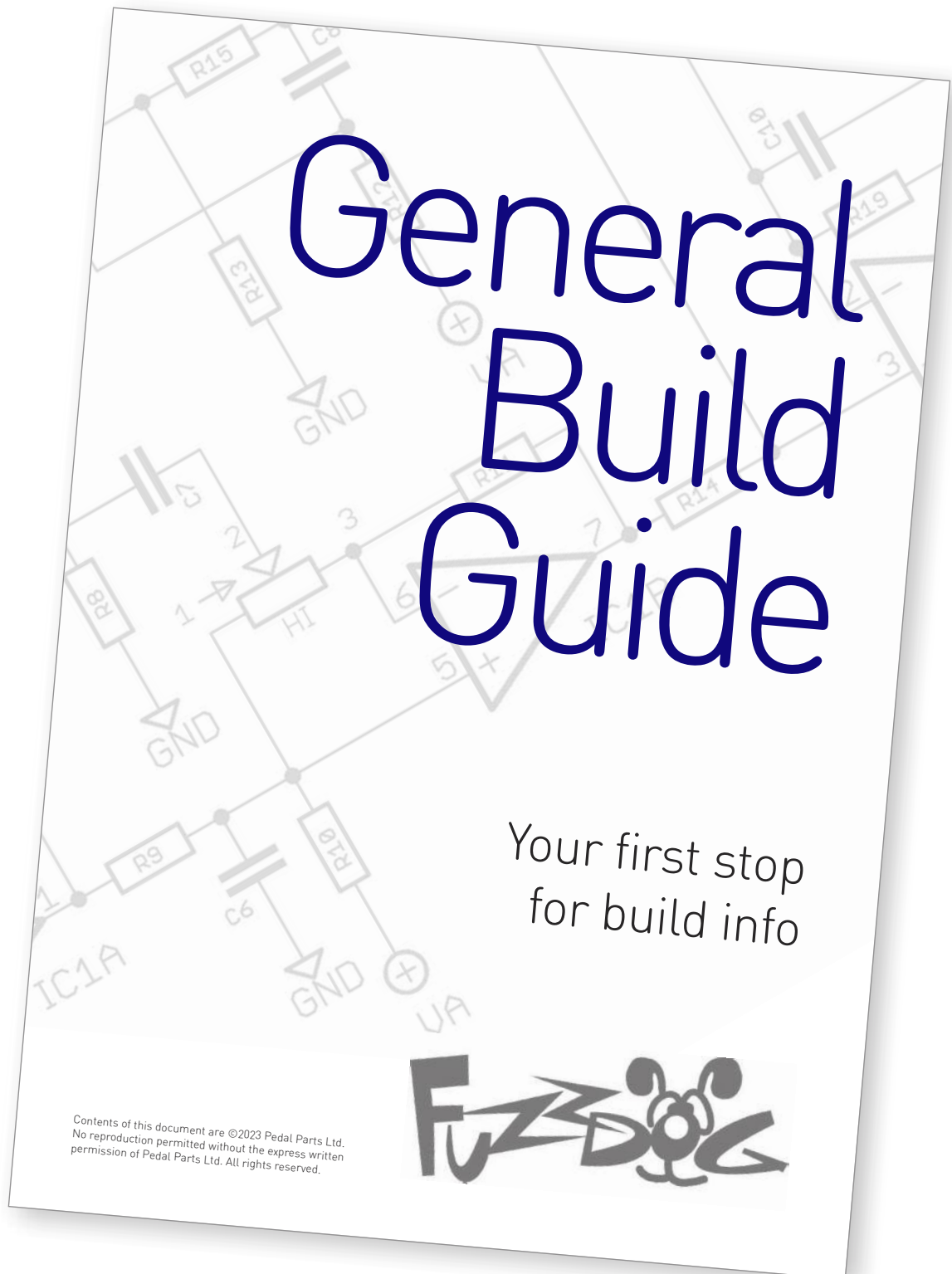
# TS-50B

Traynor bass pre-amp in a box

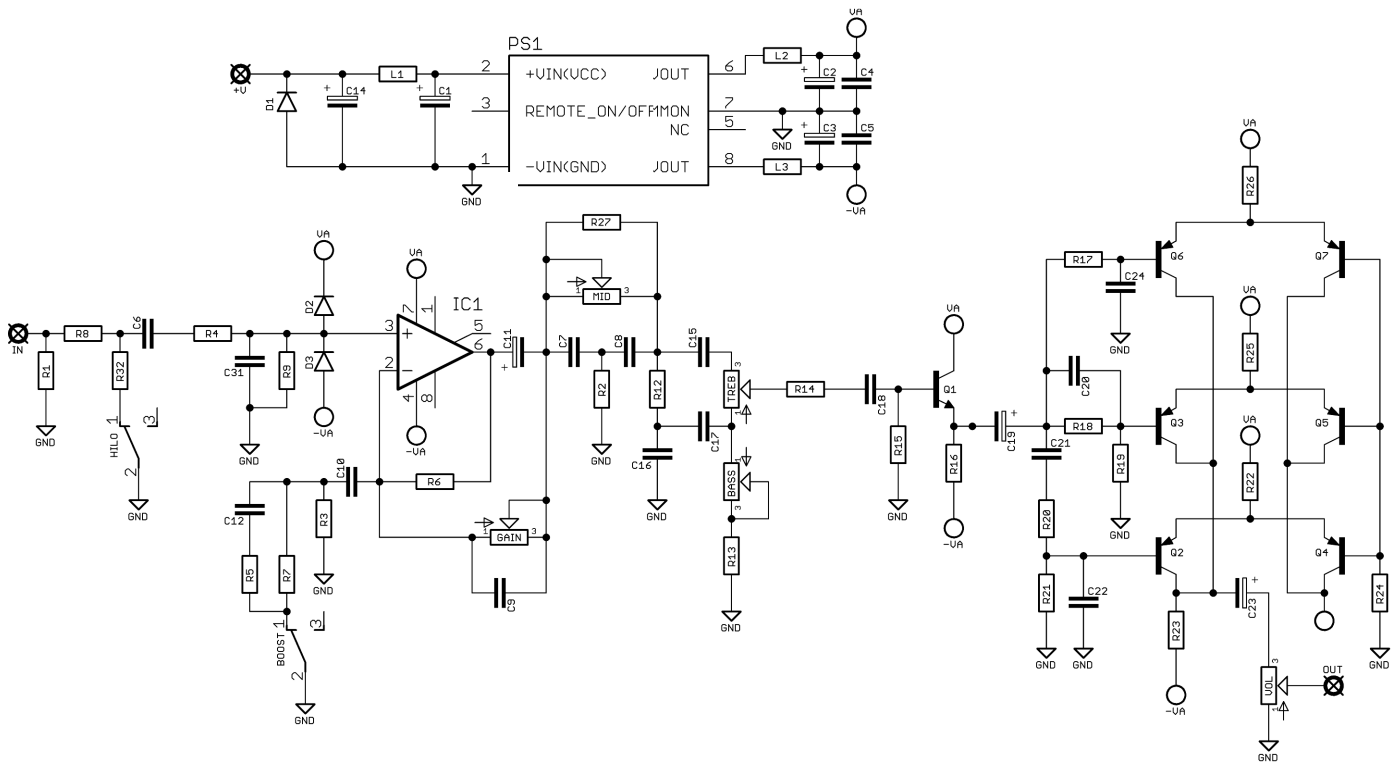


Before you dig in, ensure you download and read the **General Build Guide**.

It contains all the information you need for a successful outcome.



# Schematic + BOM



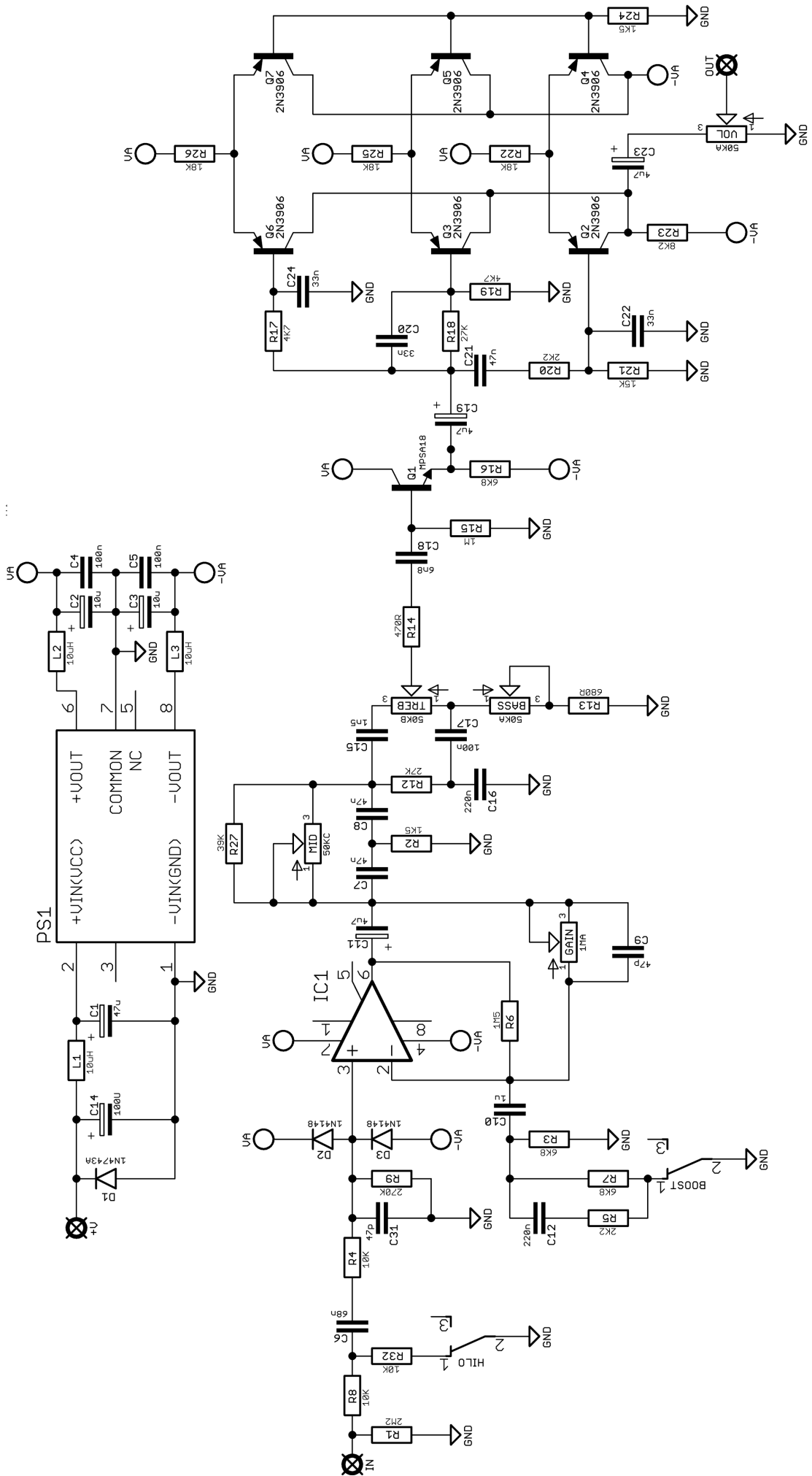
**C1** 47u elec  
**C2** 10u elec  
**C3** 10u elec  
**C4** 100n  
**C5** 100n  
**C6** 68n  
**C7** 47n  
**C8** 47n  
**C9** 47p  
**C10** 1u  
**C11** 4u7 elec  
**C12** 220n  
**C14** 100u elec  
**C15** 1n5  
**C16** 220n  
**C17** 100n  
**C18** 6n8  
**C19** 4u7 elec  
**C20** 33n  
**C21** 47n  
**C22** 33n  
**C23** 4u7 elec  
**C24** 33n  
**C31** 47p

**R1** 2M2  
**R2** 1K5  
**R3** 6K8  
**R4** 10K  
**R5** 2K2  
**R6** 1M5  
**R7** 6K8  
**R8** 10K  
**R9** 270K  
**R12** 27K  
**R13** 680R  
**R14** 470R  
**R15** 1M  
**R16** 6K8  
**R17** 4K7  
**R18** 27K  
**R19** 4K7  
**R20** 2K2  
**R21** 15K  
**R22** 18K  
**R23** 8K2  
**R24** 1K5  
**R25** 18K  
**R26** 18K  
**R27** 39K  
**R32** 10K

**D1** 1N4743A  
**D2-3** 1N4148  
**L1-3** 10uH inductor  
**IC1** TL071  
**PS1** +/-15V DC-CD converter\*  
**Q1** MPSA18  
**Q2-7** 2N3906  
**BASS** 50KA  
**GAIN** 1MA  
**MID** 50KC  
**TREB** 50KB  
**VOL** 50KA  
**BOOST** SPDT ON-ON  
**HIGH** SPDT ON-ON

\*See page 5

...



Once they're in place you'll have no access to much of the board.

Tested with a **Traco TEC 2-0923**

Other models will work, but are more fussy about voltage, requiring a minimum of 9V, whereas the Traco will operate with a little as 4.5V.

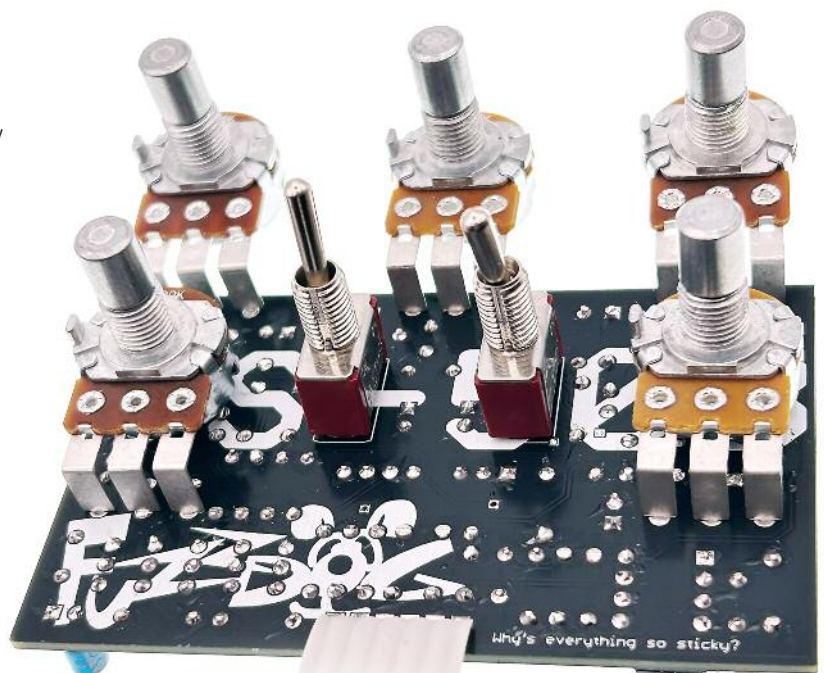
CUI PQMC3-D12-D15-S

XP POWER IZ1215S

RECOM RS1215D

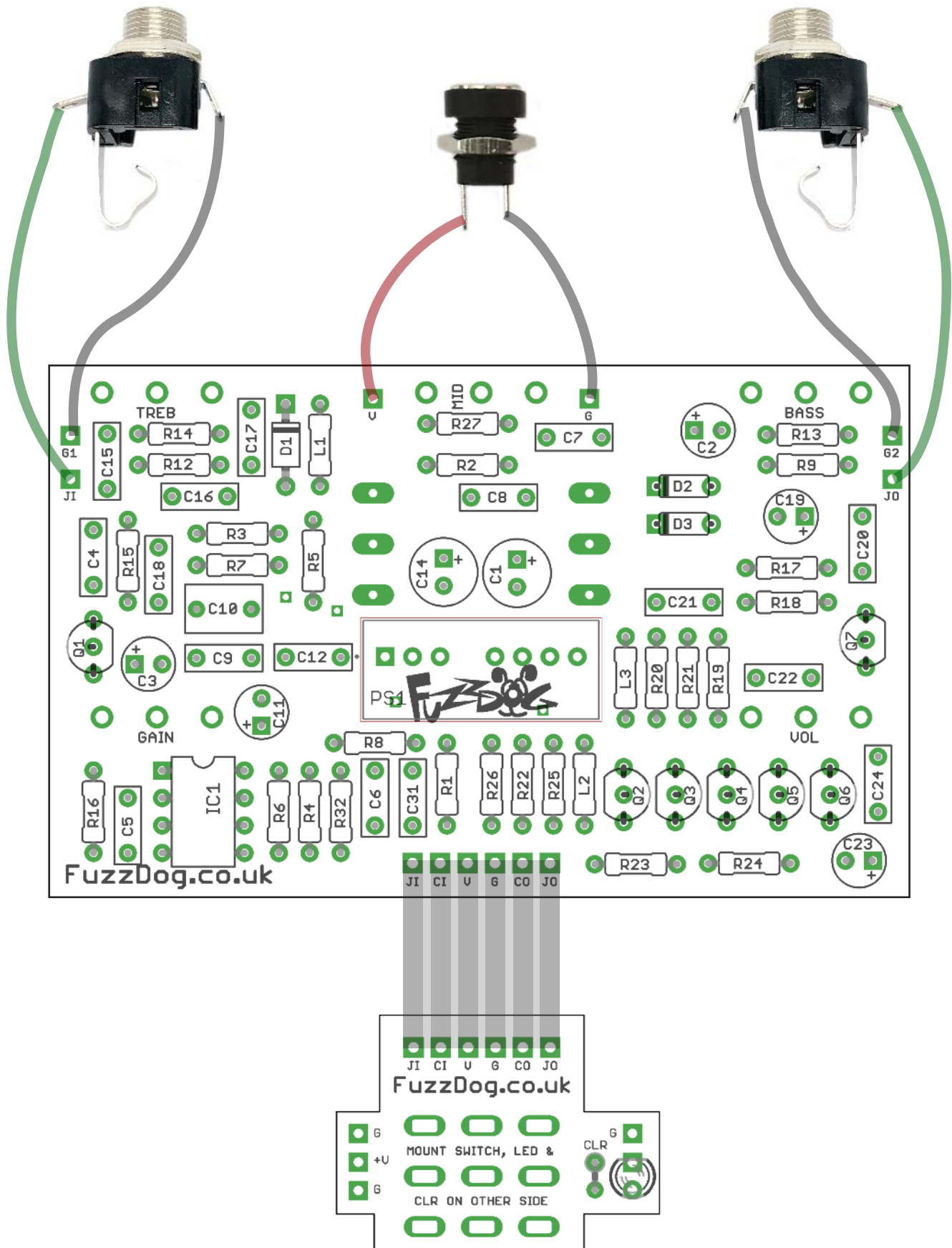
RECOM RS3-1215D

MORNSUN WRA1215S-3WR2





# Wiring



# Drilling template

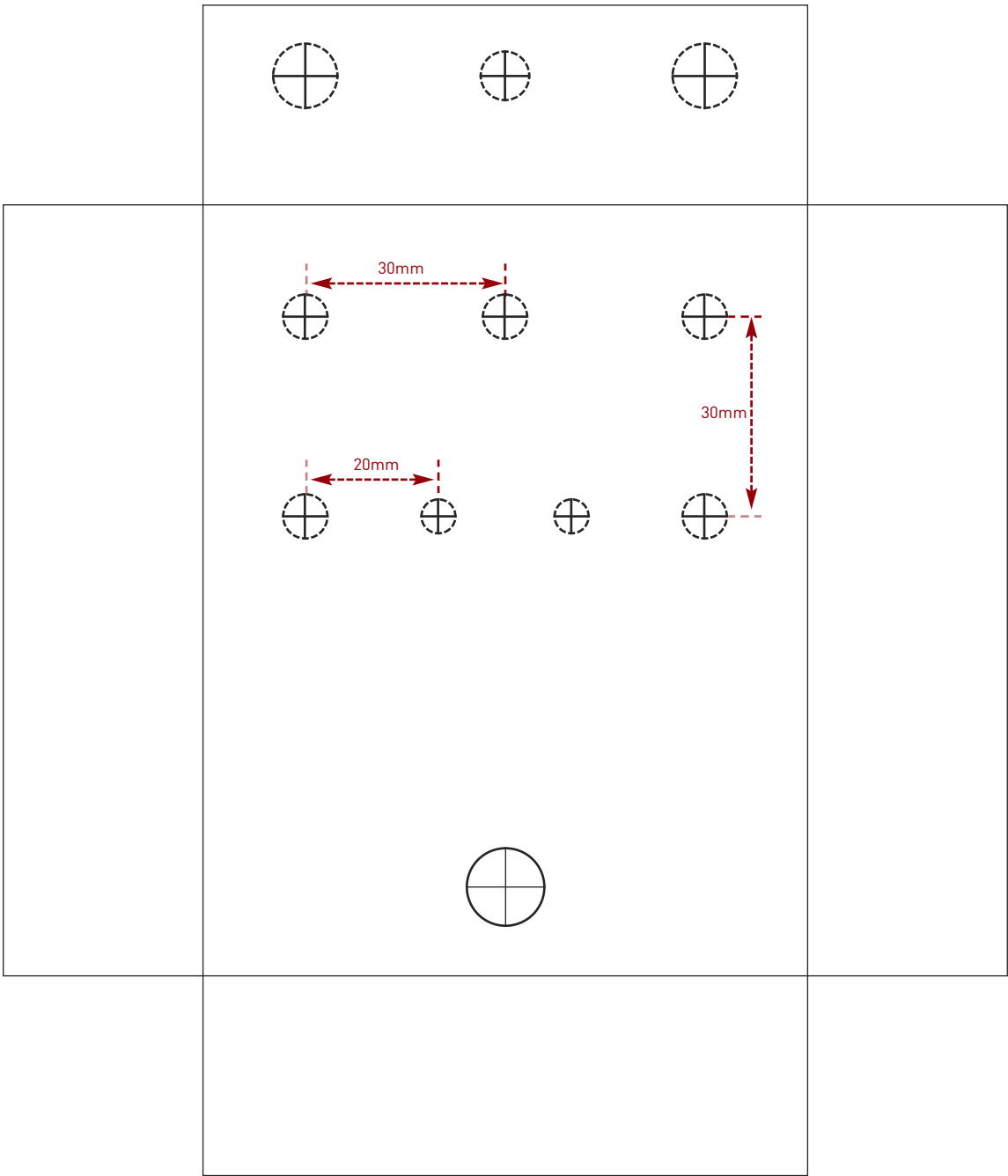
## Hammond 1590BB

Drill sizes listed are minimum.

It's a good idea to add 1mm to anything mounted on the PCB that'll poke through the front of the enclosure.

Drill sizes:

Pots	7mm
Jacks	10mm
Footswitch	12mm
DC Socket	12mm
Toggle switches	6mm
Rotary switches	10mm



This template is a rough guide only. You should ensure correct marking of your enclosure before drilling. You use this template at your own risk.

Pedal Parts Ltd can accept no responsibility for incorrect drilling of enclosures.

FuzzDog.co.uk