

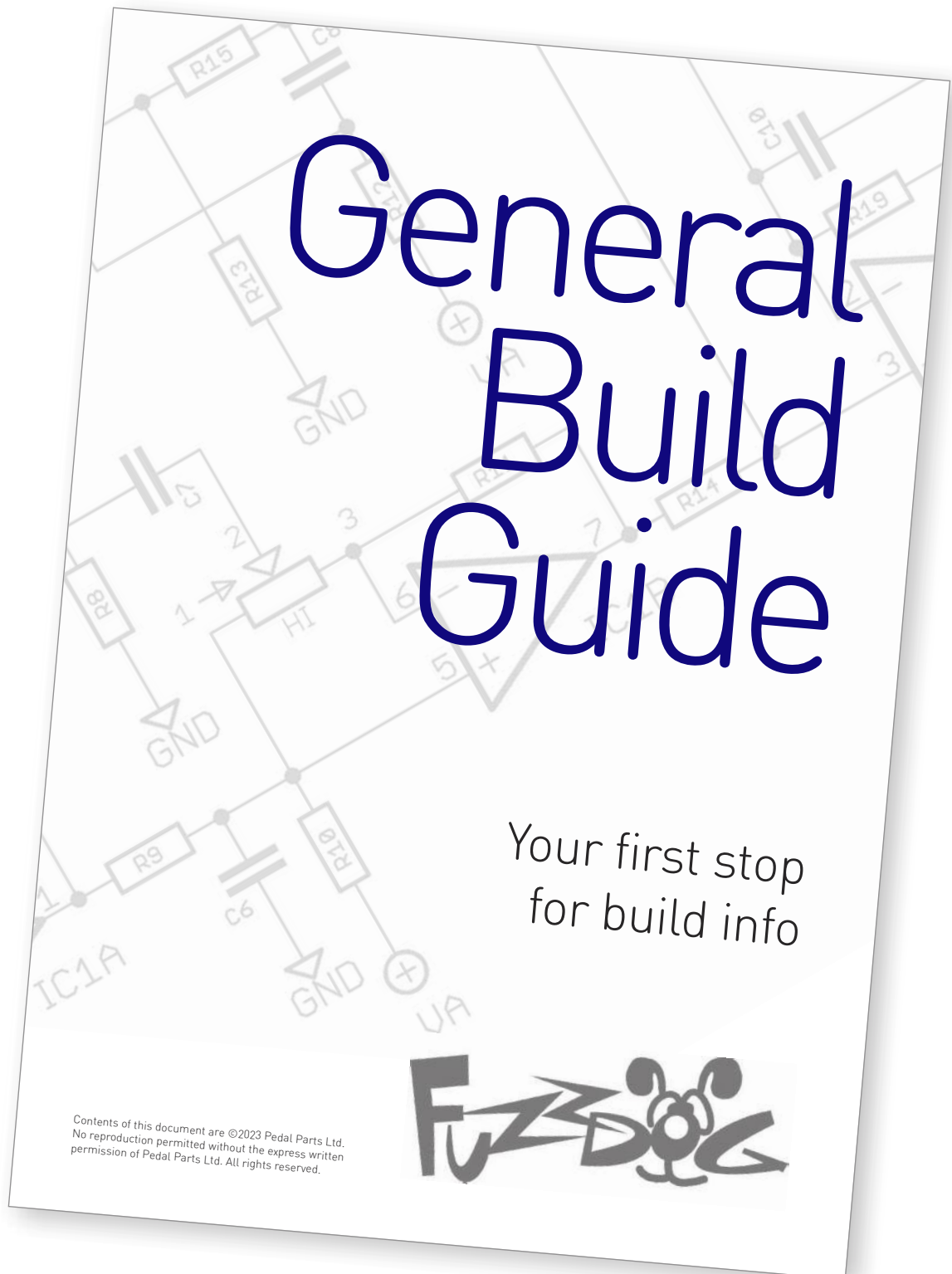
TS-50

Traynor pre-amp in a box

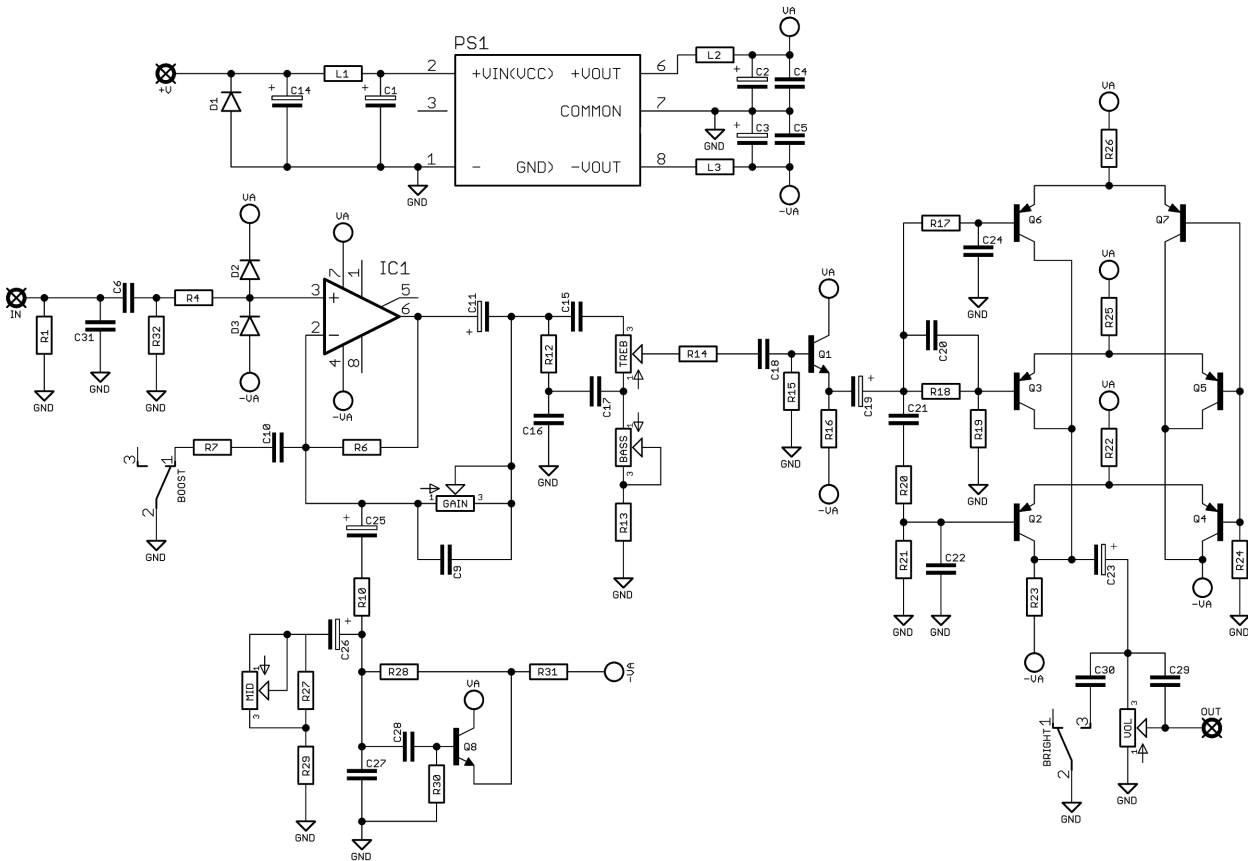


Before you dig in, ensure you download and read the **General Build Guide**.

It contains all the information you need for a successful outcome.



Schematic + BOM

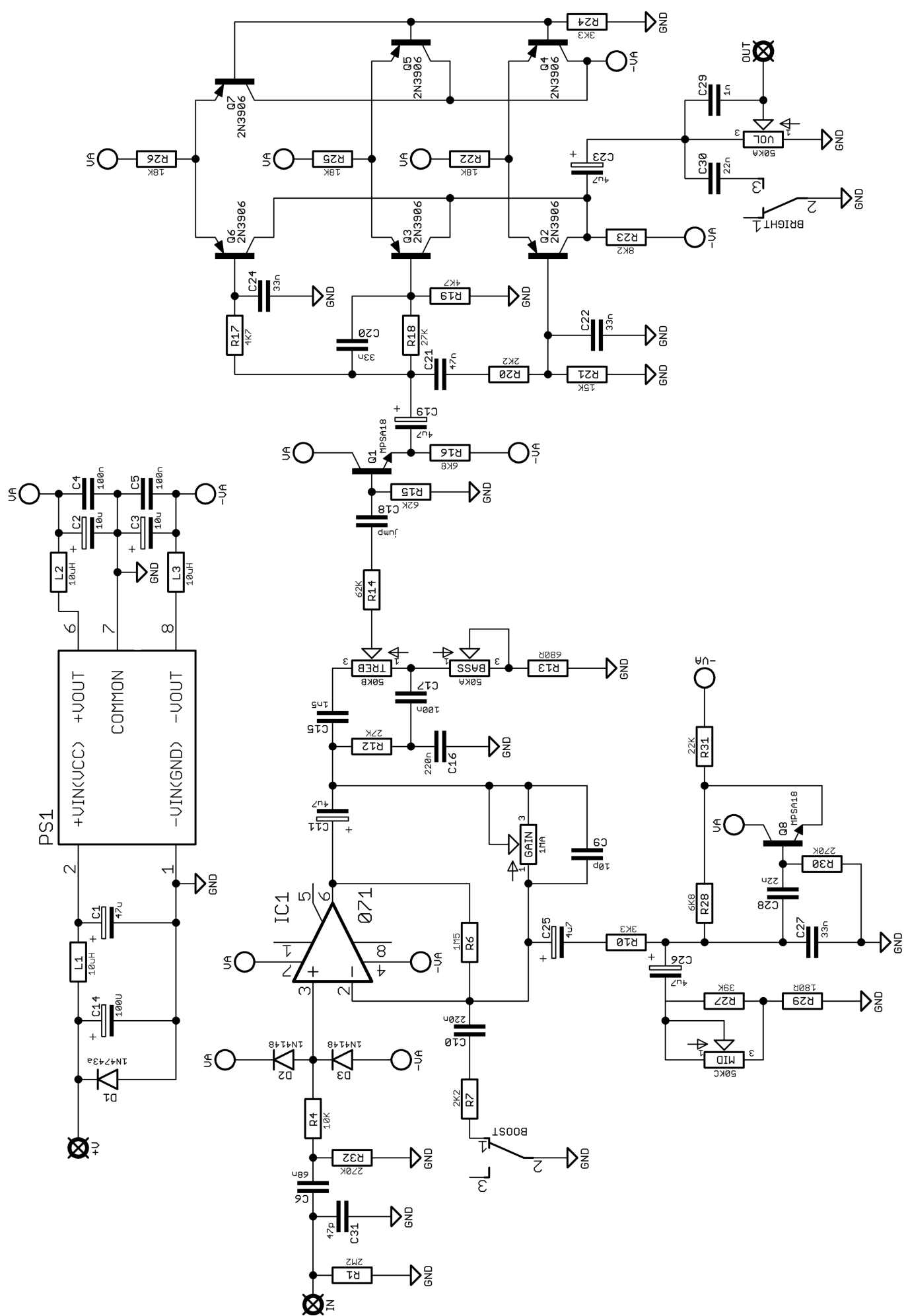


C1 47u elec
 C2 10u elec
 C3 10u elec
 C4 100n
 C5 100n
 C6 68n
 C9 10p
 C10 220n
 C11 4u7 elec
 C14 100u elec
 C15 1n5
 C16 220n
 C17 100n
 C18 Jumper
 C19 4u7 elec
 C20 33n
 C21 47n
 C22 33n
 C23 4u7 elec
 C24 33n
 C25 4u7 elec
 C26 4u7 elec
 C27 33n
 C28 22n
 C29 1n
 C30 22n
 C31 47p

R1 2M2
 R4 10K
 R6 1M5
 R7 2K2
 R10 3K3
 R12 27K
 R13 680R
 R14 62K
 R15 62K
 R16 6K8
 R17 4K7
 R18 27K
 R19 4K7
 R20 2K2
 R21 15K
 R22 18K
 R23 8K2
 R24 3K3
 R25 18K
 R26 18K
 R27 39K
 R28 6K8
 R29 180R
 R30 270K
 R31 22K
 R32 270K

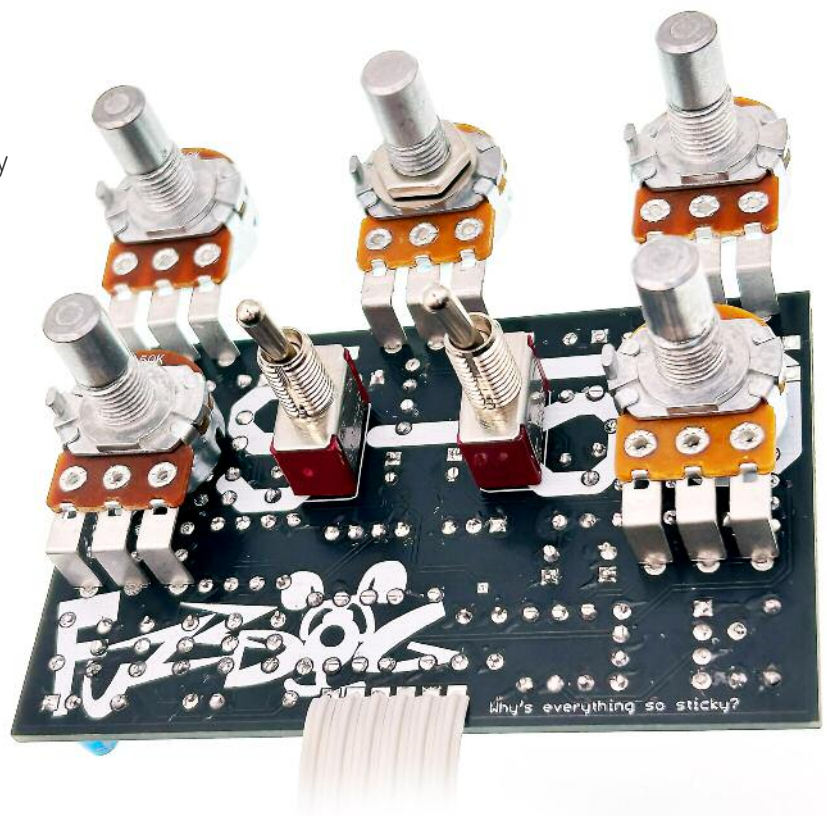
D1 1N4743A
 D2-3 1N4148
 L1-3 10uH inductor
 IC1 TL071
 PS1 +/- 15V DC-CD converter*
 Q1 MPSA18
 Q2-7 2N3906
 Q8 MPSA18
 BASS 50KA
 GAIN 1MA
 MID 50KC
 TREB 50KB
 VOL 50KA
 BOOST SPDT ON-ON
 HIGH SPDT ON-ON

*See page 5

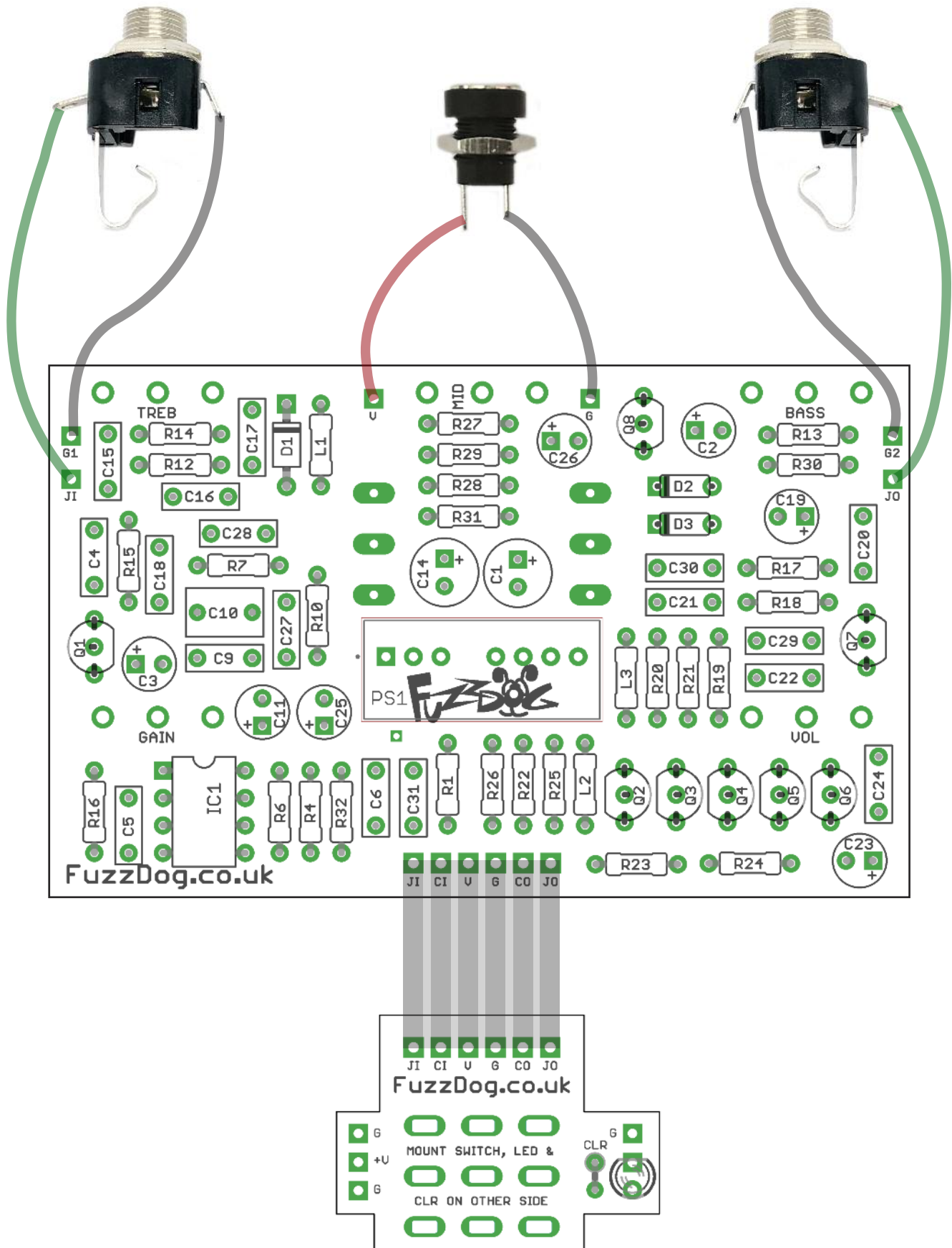


Once they're in place you'll have no access to much of the board.

MORNSUN WRA1215S-3WR2



Wiring



Drilling template

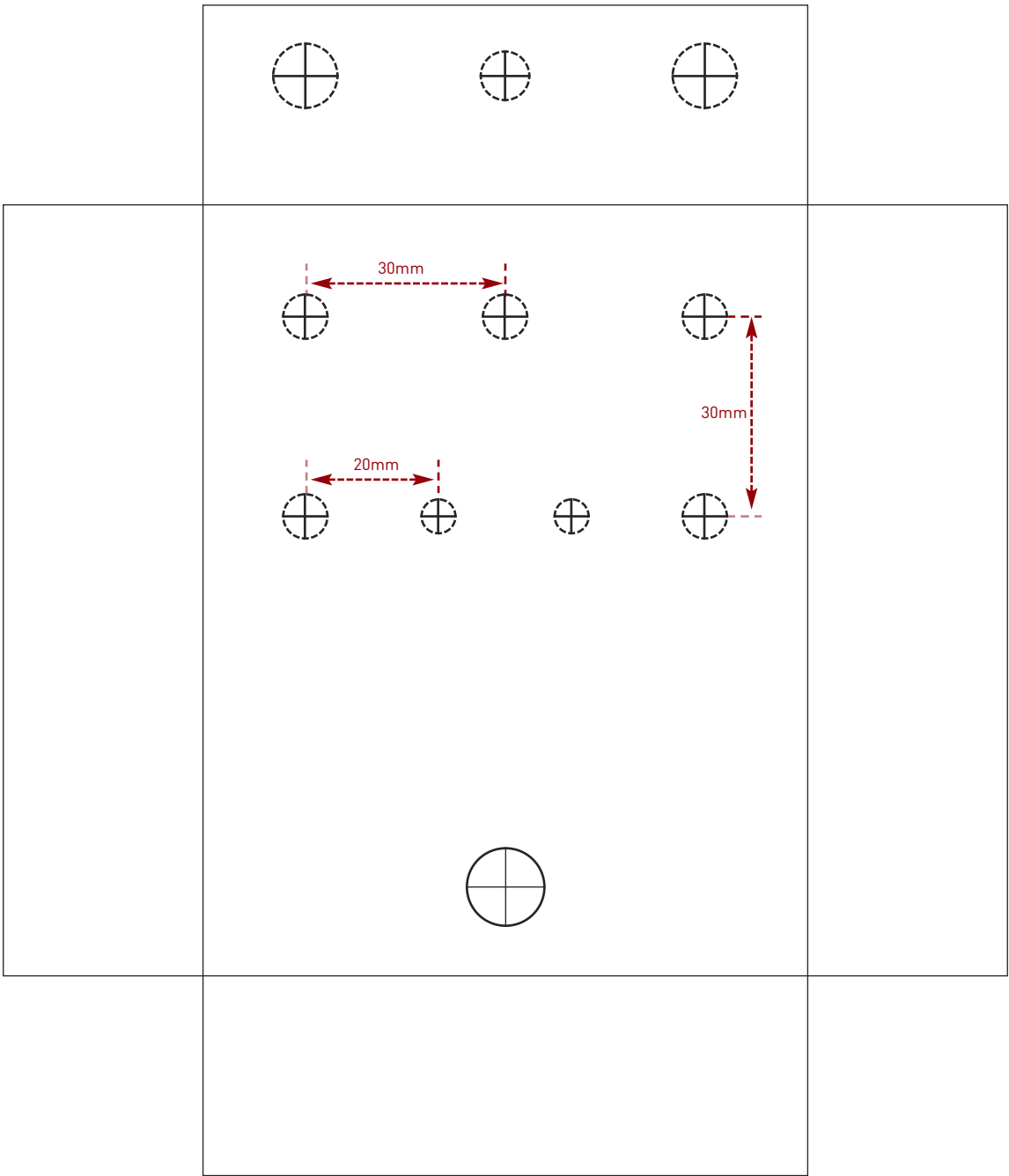
Hammond 1590BB

Drill sizes listed are minimum.

It's a good idea to add 1mm to anything mounted on the PCB that'll poke through the front of the enclosure.

Drill sizes:

Pots	7mm
Jacks	10mm
Footswitch	12mm
DC Socket	12mm
Toggle switches	6mm
Rotary switches	10mm



This template is a rough guide only. You should ensure correct marking of your enclosure before drilling. You use this template at your own risk.
Pedal Parts Ltd can accept no responsibility for incorrect drilling of enclosures.

FuzzDog.co.uk