

TEN

Pedal version of a
Peavey Decade pre-amp

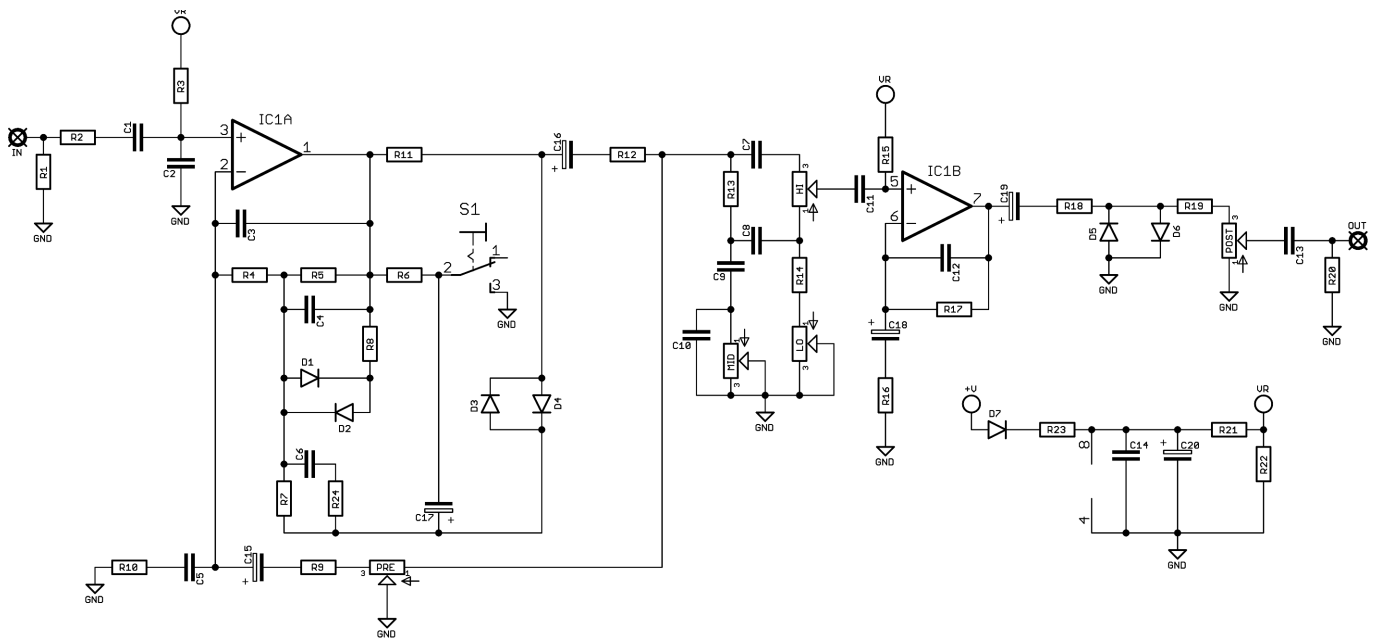


Before you dig in, ensure you download and read the **General Build Guide**.

It contains all the information you need for a successful outcome.



Schematic + BOM

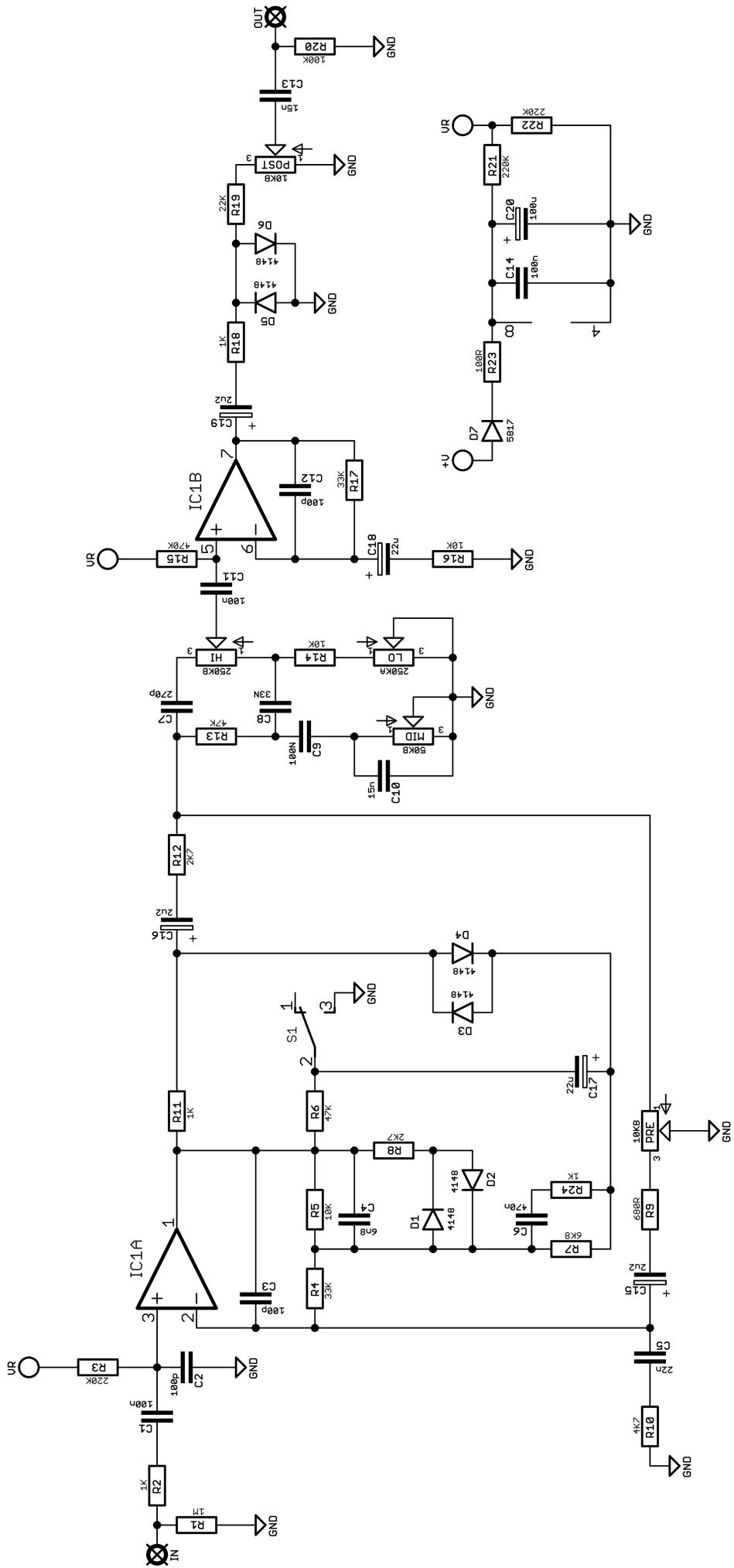


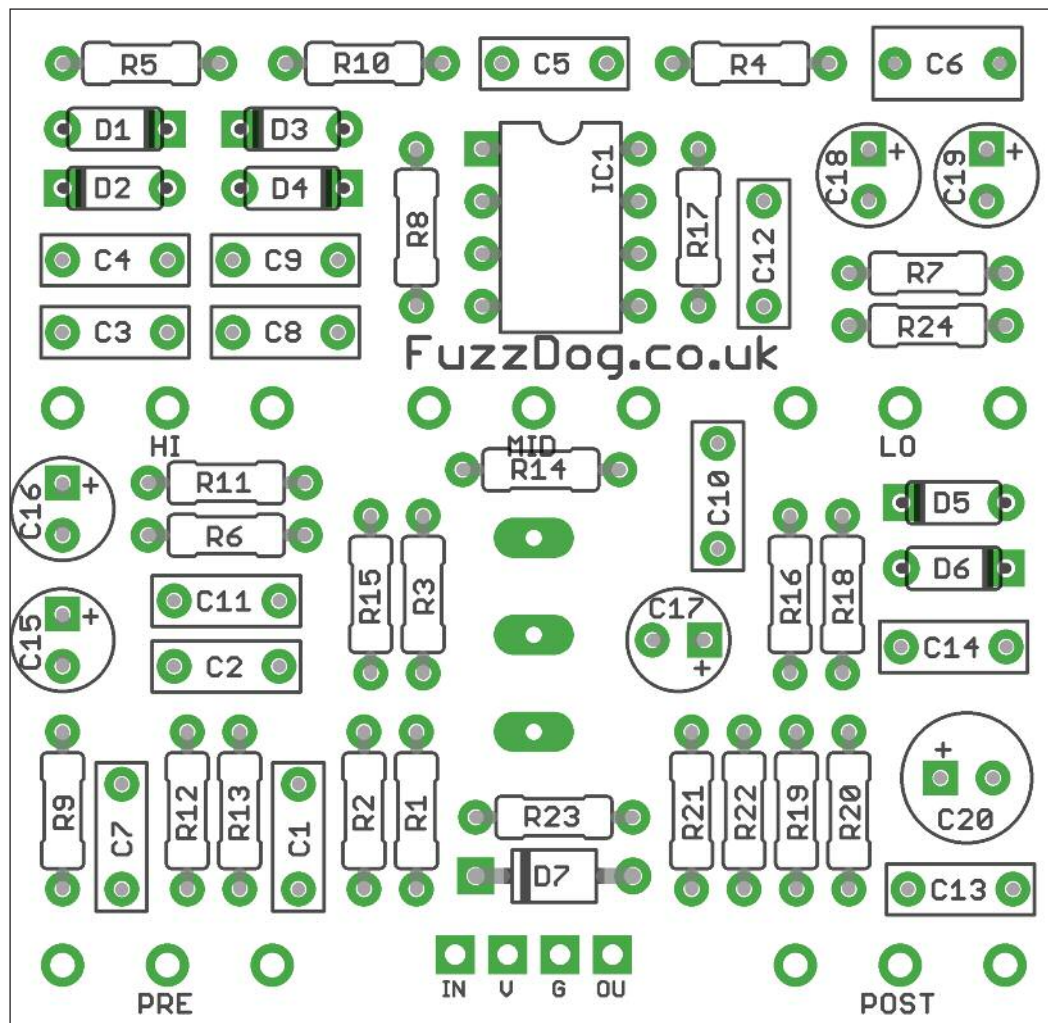
R1	1M
R2	1K
R3	220K
R4	33K
R5	10K
R6	47K
R7	6K8
R8	2K7
R9	680R
R10	4K7
R11	1K
R12	2K7
R13	47K
R14	10K
R15	470K
R16	10K
R17	33K (150K)*
R18	1K
R19	22K
R20	100K
R21	220K
R22	220K
R23	100R
R24	1K

C1	100n
C2	100p
C3	100p
C4	6n8
C5	22n
C6	470n
C7	270p
C8	33n
C9	100n
C10	15n
C11	100n
C12	100p
C13	15n
C14	100n
C15	2u2 elec
C16	2u2 elec
C17	22u elec
C18	22u elec
C19	2u2 elec
C20	100u elec

D1-6	1N4148
D7	1N5817
IC1	4558
HI	250KB
MID	50KB
LO	250KA
PRE	10KB
POST	10KB
SW1	SPDT ON-ON

*Increasing R17 to 150K will increase the overall output without changing the sound.

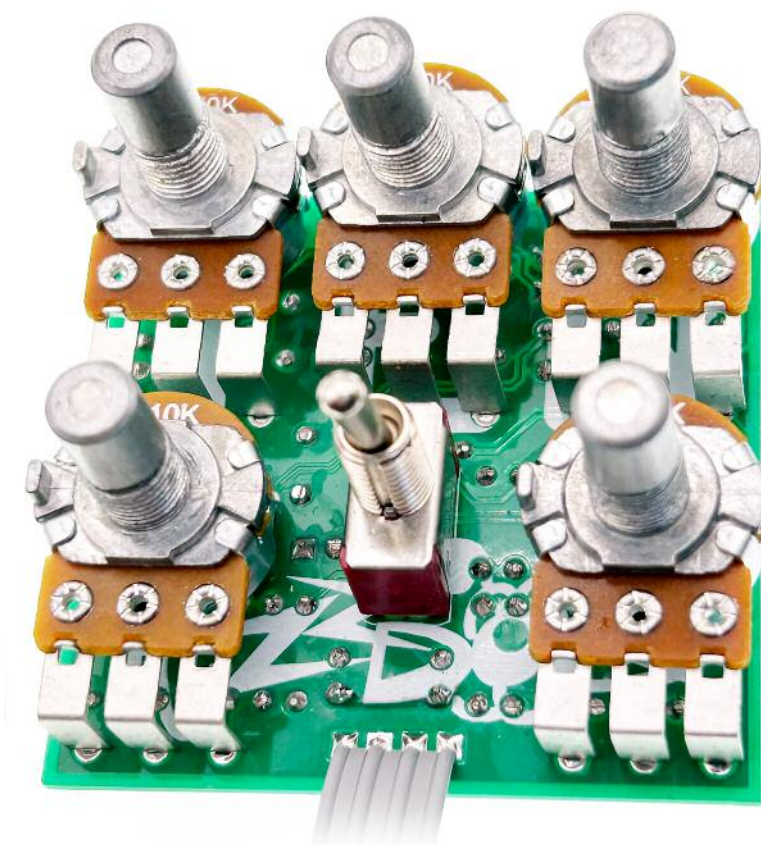




Snap the small metal tags off the pots so they can be mounted flush in the box.

You should solder all other board-mounted components before you solder the pots.

Once they're in place you'll have no access to much of the board.



Drilling template

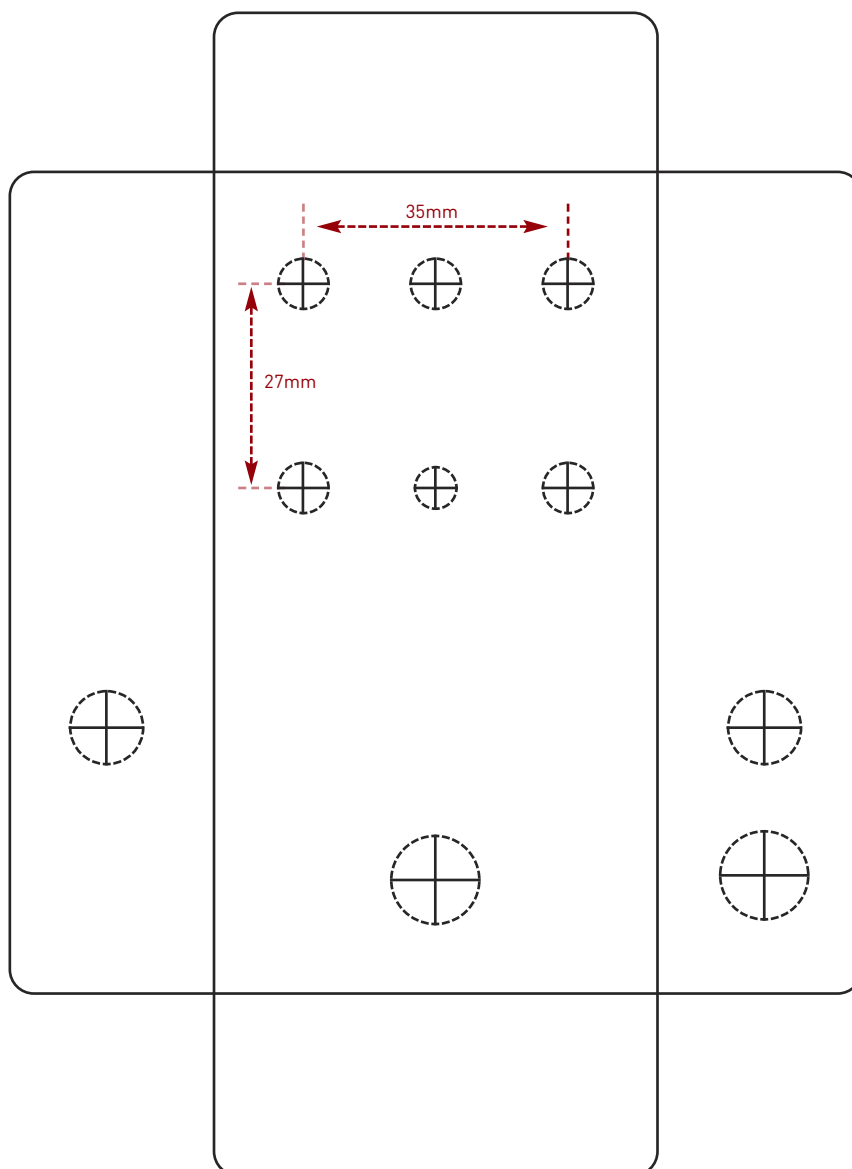
Hammond 1590B - 60 x 111 x 31mm

Drill sizes listed are minimum.

It's a good idea to add 1mm to anything mounted on the PCB that'll poke through the front of the enclosure.

Drill sizes:

Pots	7mm
Jacks	10mm
Footswitch	12mm
DC Socket	12mm
Toggle switches	6mm
Rotary switches	10mm



This template is a rough guide only. You should ensure correct marking of your enclosure before drilling. You use this template at your own risk.

Pedal Parts Ltd can accept no responsibility for incorrect drilling of enclosures.

FuzzDog.co.uk