

# Superlead

Guv variant for those who prefer simple tone stacks

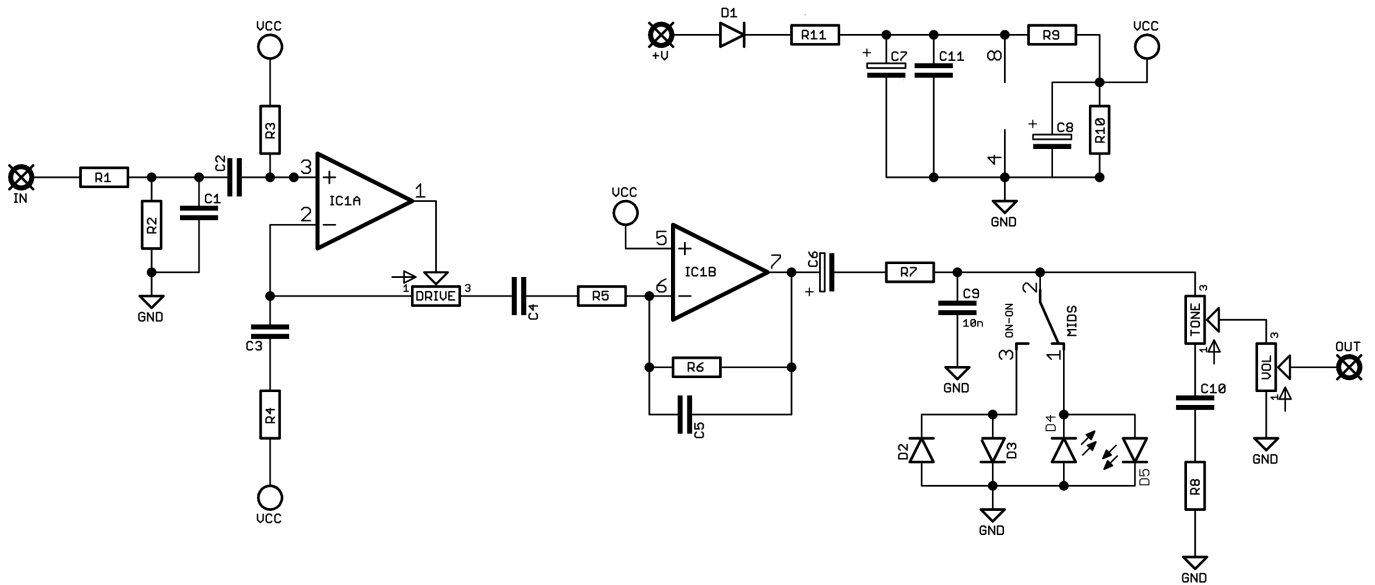


Before you dig in, ensure you download and read the **General Build Guide**.

It contains all the information you need for a successful outcome.



# Schematic + BOM

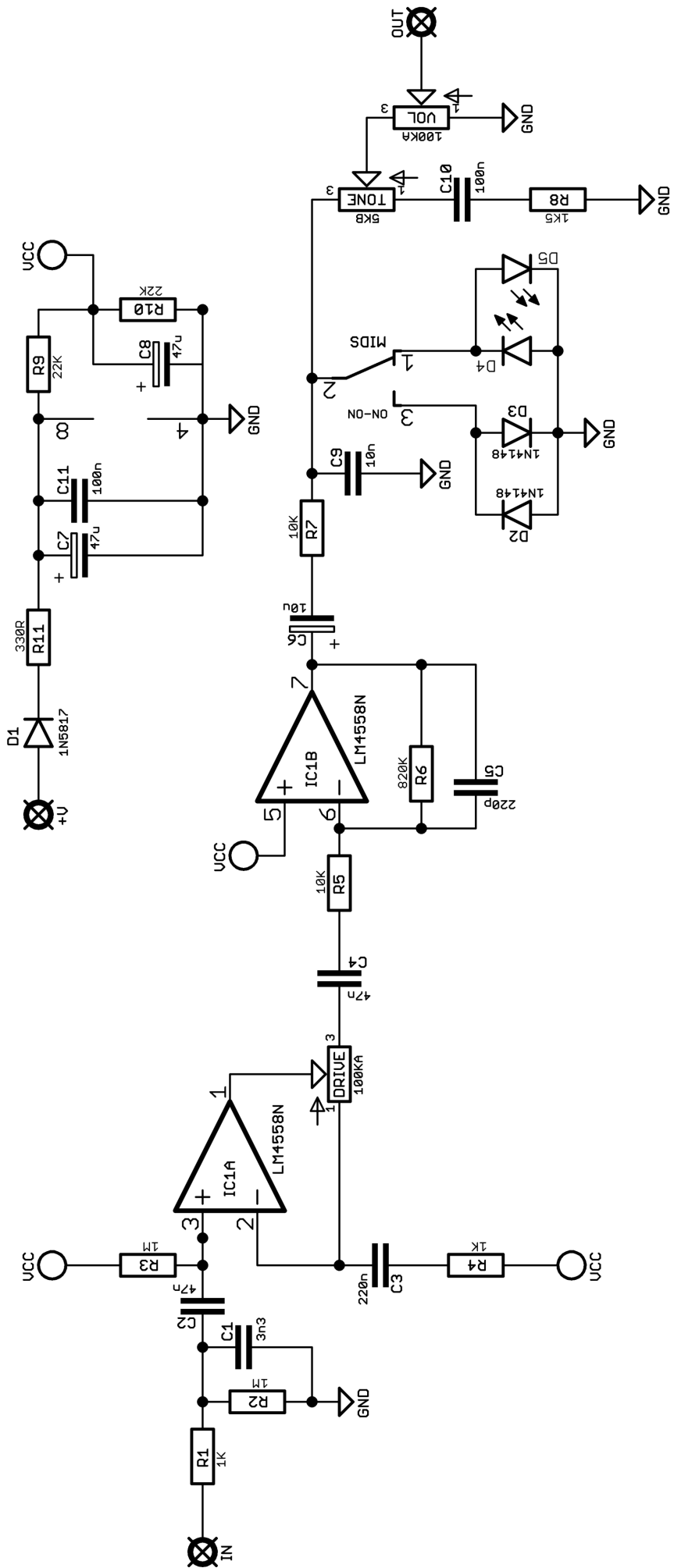


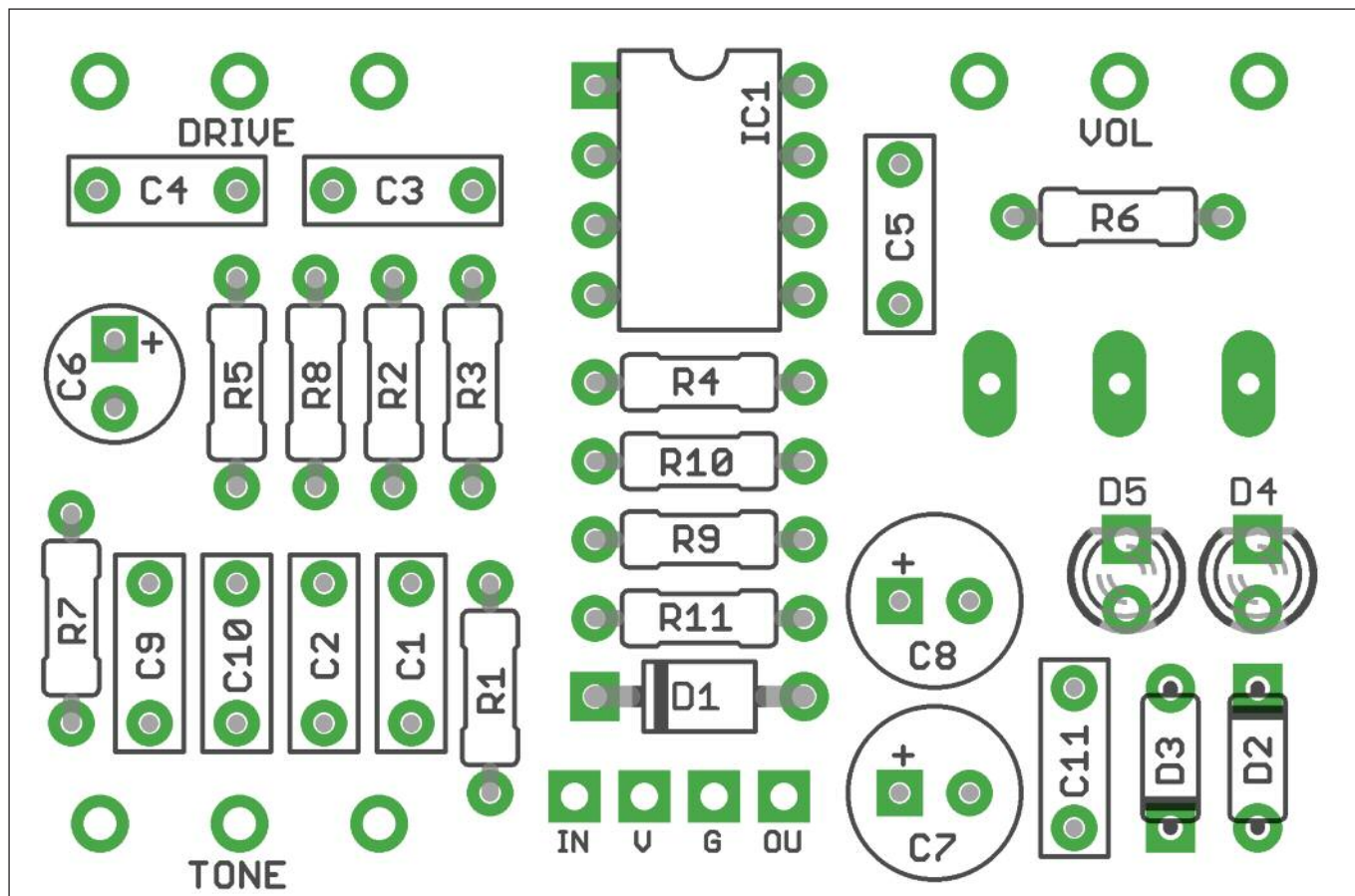
R1 1K  
R2 1M  
R3 1M  
R4 1K  
R5 10K  
R6 820K  
R7 10K  
R8 1K5  
R9 22K  
R10 22K  
R11 330R

C1 3n3  
C2 47n  
C3 220n  
C4 47n  
C5 220p  
C6 10u elec  
C7 47u elec  
C8 47u elec  
C9 10n  
C10 100n  
C11 100n

D1 1N5817  
D2-3 1N4148  
D4-5 Red 3mm LED  
IC1 4558  
DRIVE 100KA  
TONE 5KB  
VOL 100KA  
S1 SPDT ON-ON

Switch to the left engages  
D4-5, right D2-3.

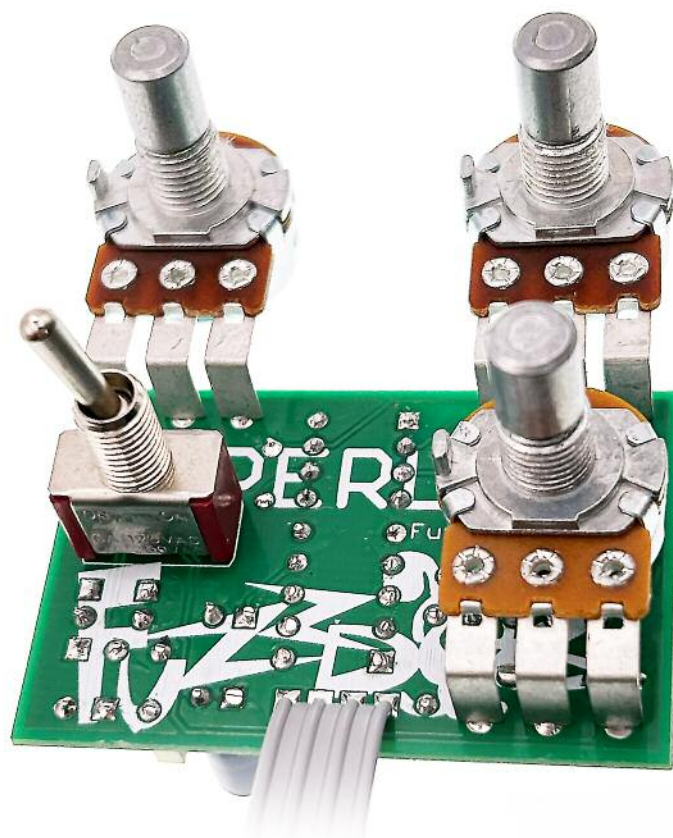




Snap the small metal tag off the pots so they can be mounted flush in the box.

You should solder all other board-mounted components before you solder the pots.

Once they're in place you'll have no access to much of the board.



# Drilling template

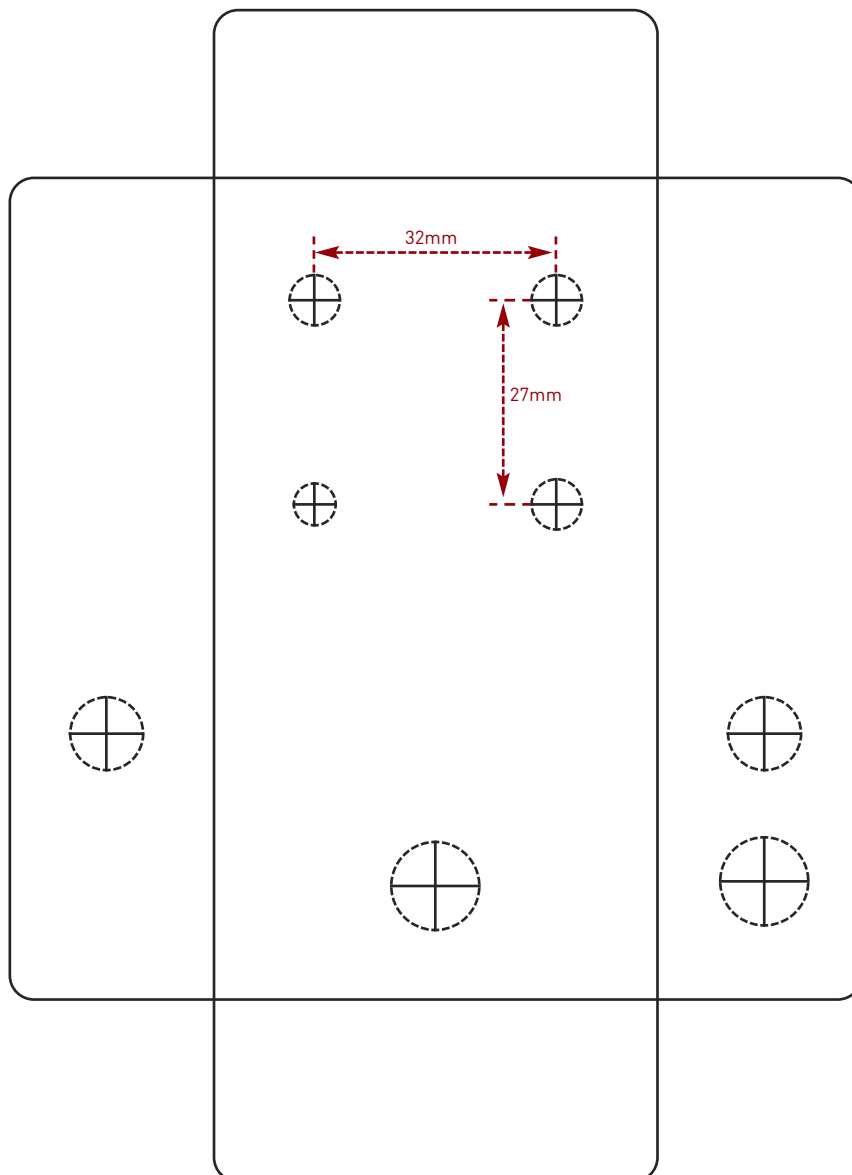
**Hammond 1590B - 60 x 111 x 31mm**

Drill sizes listed are minimum.

It's a good idea to add 1mm to anything mounted on the PCB that'll poke through the front of the enclosure.

Drill sizes:

Pots	7mm
Jacks	10mm
Footswitch	12mm
DC Socket	12mm



This template is a rough guide only. You should ensure correct marking of your enclosure before drilling. You use this template at your own risk.

Pedal Parts Ltd can accept no responsibility for incorrect drilling of enclosures.

FuzzDog.co.uk