

# Stink

Madbean's excellently  
embellished Smash Drive

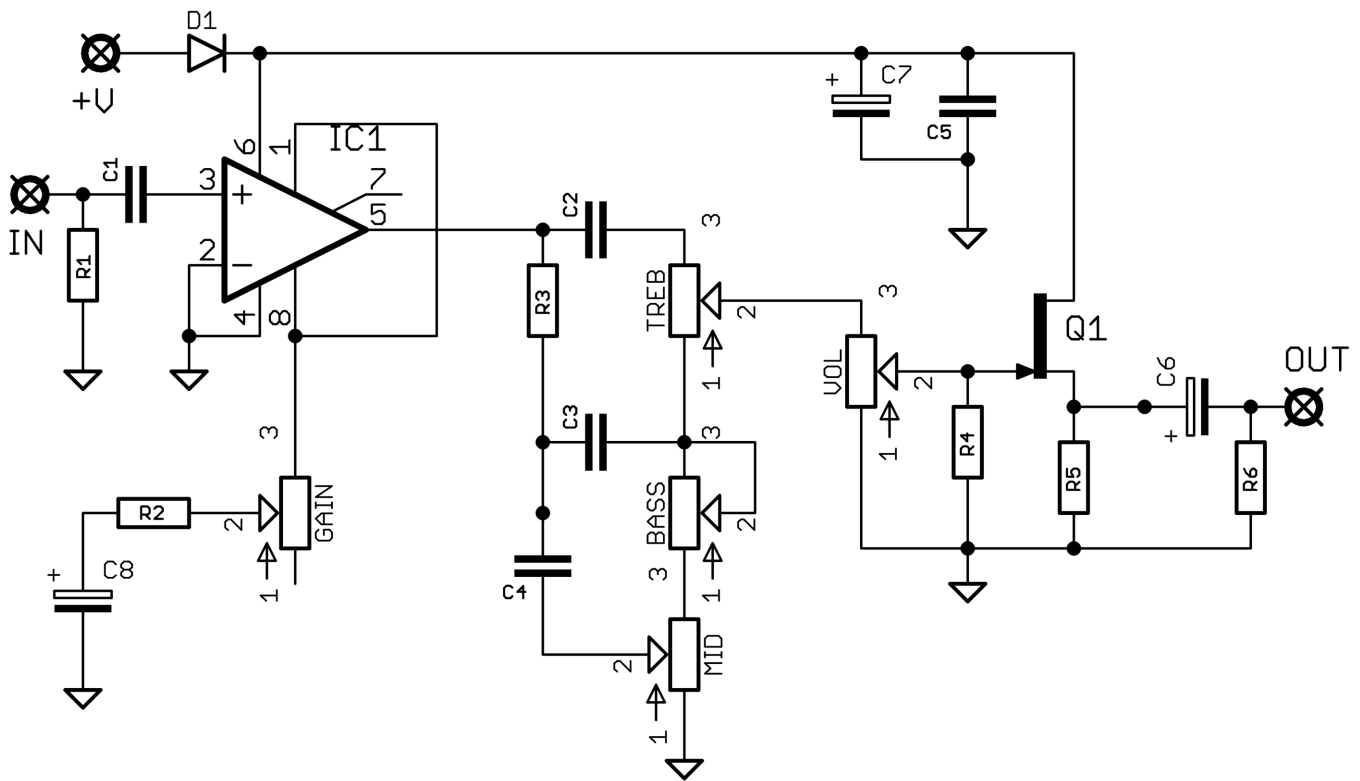


Before you dig in, ensure you download and read the **General Build Guide**.

It contains all the information you need for a successful outcome.



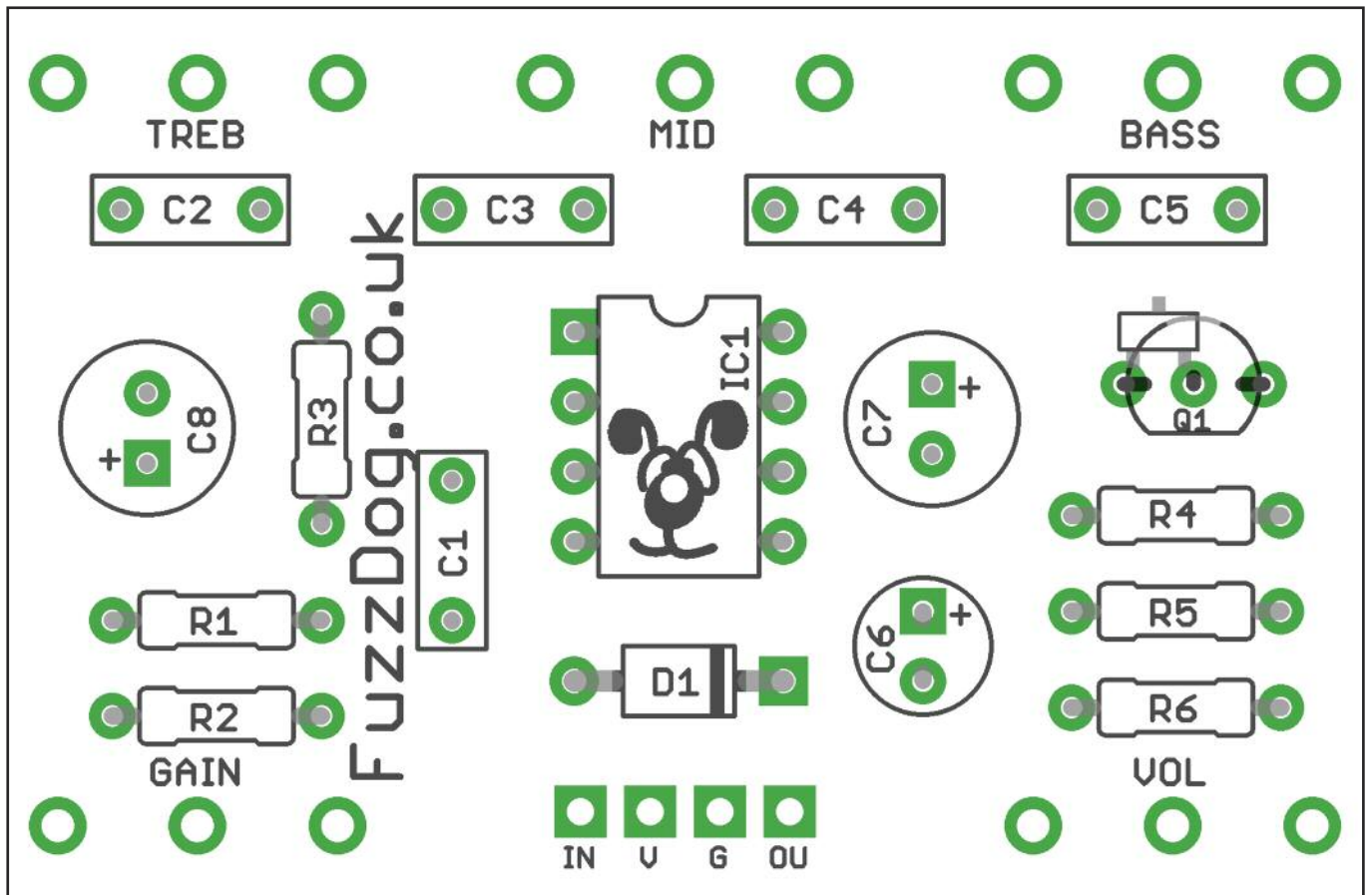
# Schematic + BOM



R1	1M	C1	22n	Q1	2N5457*
R2	100R	C2	680p		MMBF5357
R3	33K	C3	22n	D1	1N5817
R4	1M	C4	22n	IC1	LM386**
R5	10K	C5	100n	BASS	1MA
R6	10K	C6	1u elec	GAIN	5KC
		C7	47u elec	MID	25KB
		C8	47u elec	TREB	250KA
				VOL	500KA

\*Others will work fine as a buffer - J201, J112 etc.  
There are pads for through-hole/SMT parts.

\*\*You'll get different results using different models. 386N-1 will sound tight and compressed. Higher suffix models will open up a bit.



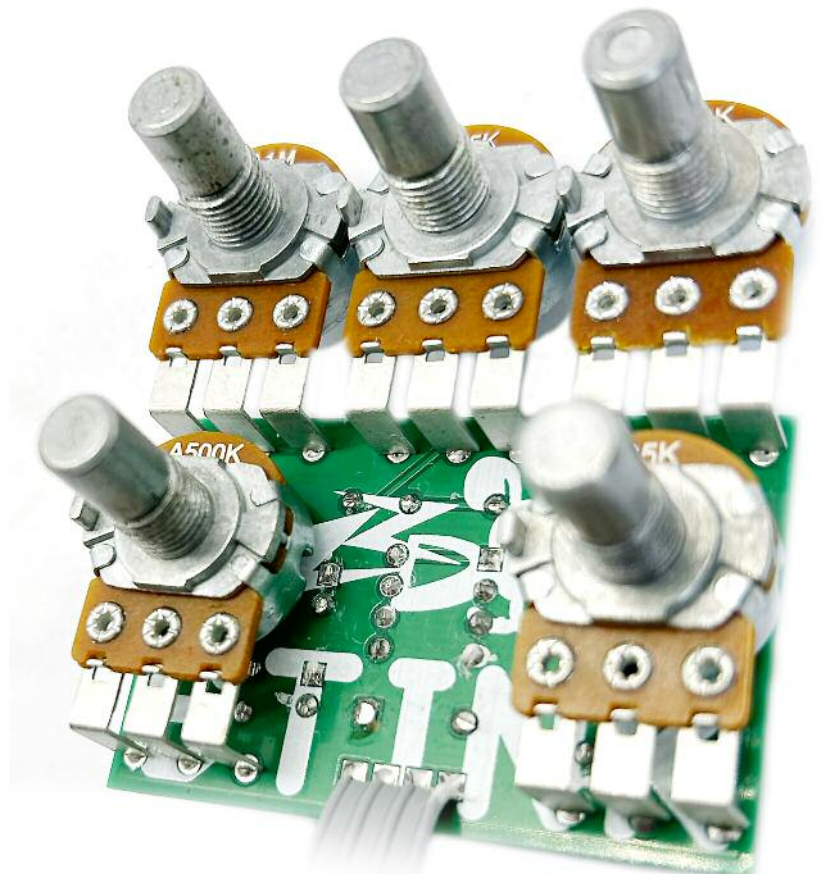
Snap the small metal tag off the pots so they can be mounted flush in the box.

You should solder all other board-mounted components before you solder the pots.

Once they're in place you'll have no access to much of the board.

## TOO MUCH GAIN?

You can reduce the gain by disconnecting pin 1 of the IC. Simply bend it out to the side before plugging the IC into the socket.



# Drilling template

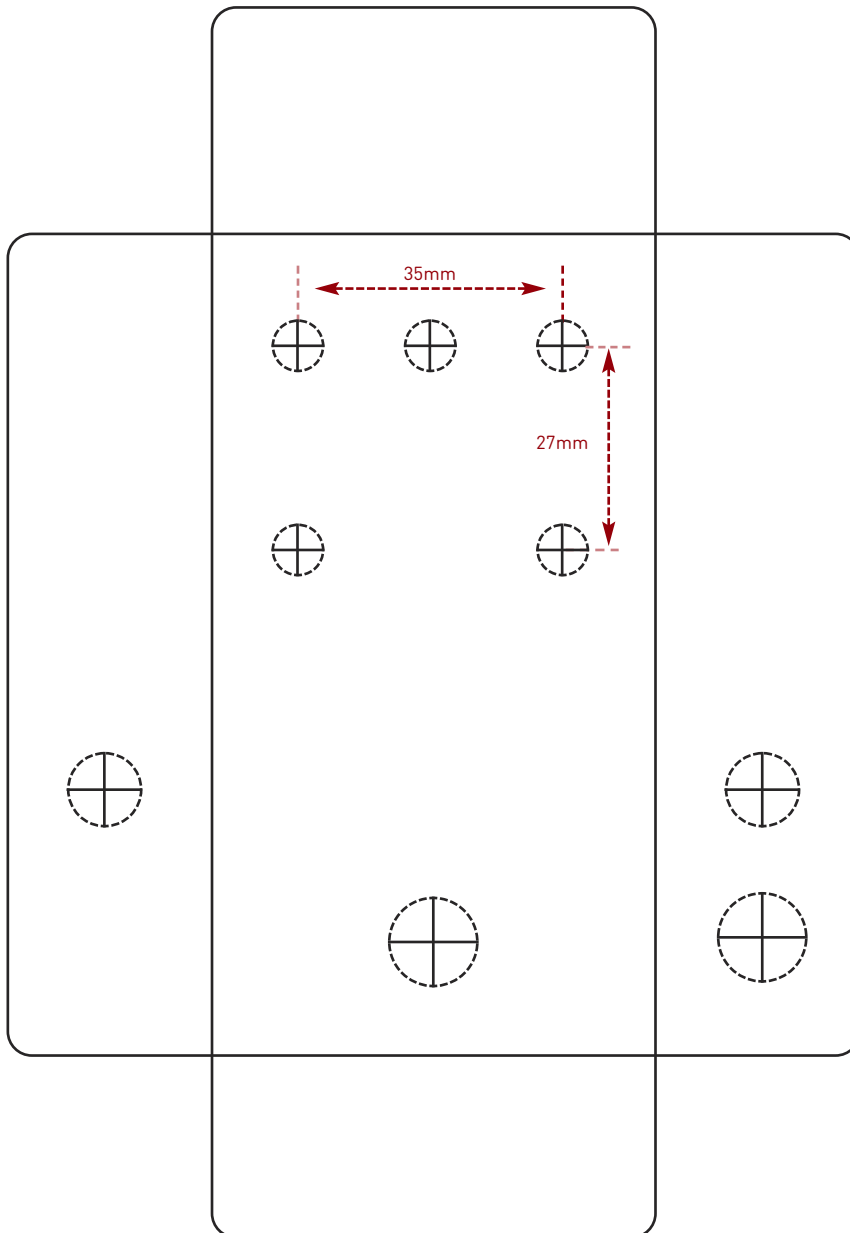
**Hammond 1590B - 60 x 111 x 31mm**

Drill sizes listed are minimum.

It's a good idea to add 1mm to anything mounted on the PCB that'll poke through the front of the enclosure.

Drill sizes:

Pots	7mm
Jacks	10mm
Footswitch	12mm
DC Socket	12mm
Toggle switches	6mm
Rotary switches	10mm



This template is a rough guide only. You should ensure correct marking of your enclosure before drilling. You use this template at your own risk.

Pedal Parts Ltd can accept no responsibility for incorrect drilling of enclosures.

FuzzDog.co.uk