

# Spiffing Six

Fender Blackface with the  
controls set to 6 style tones

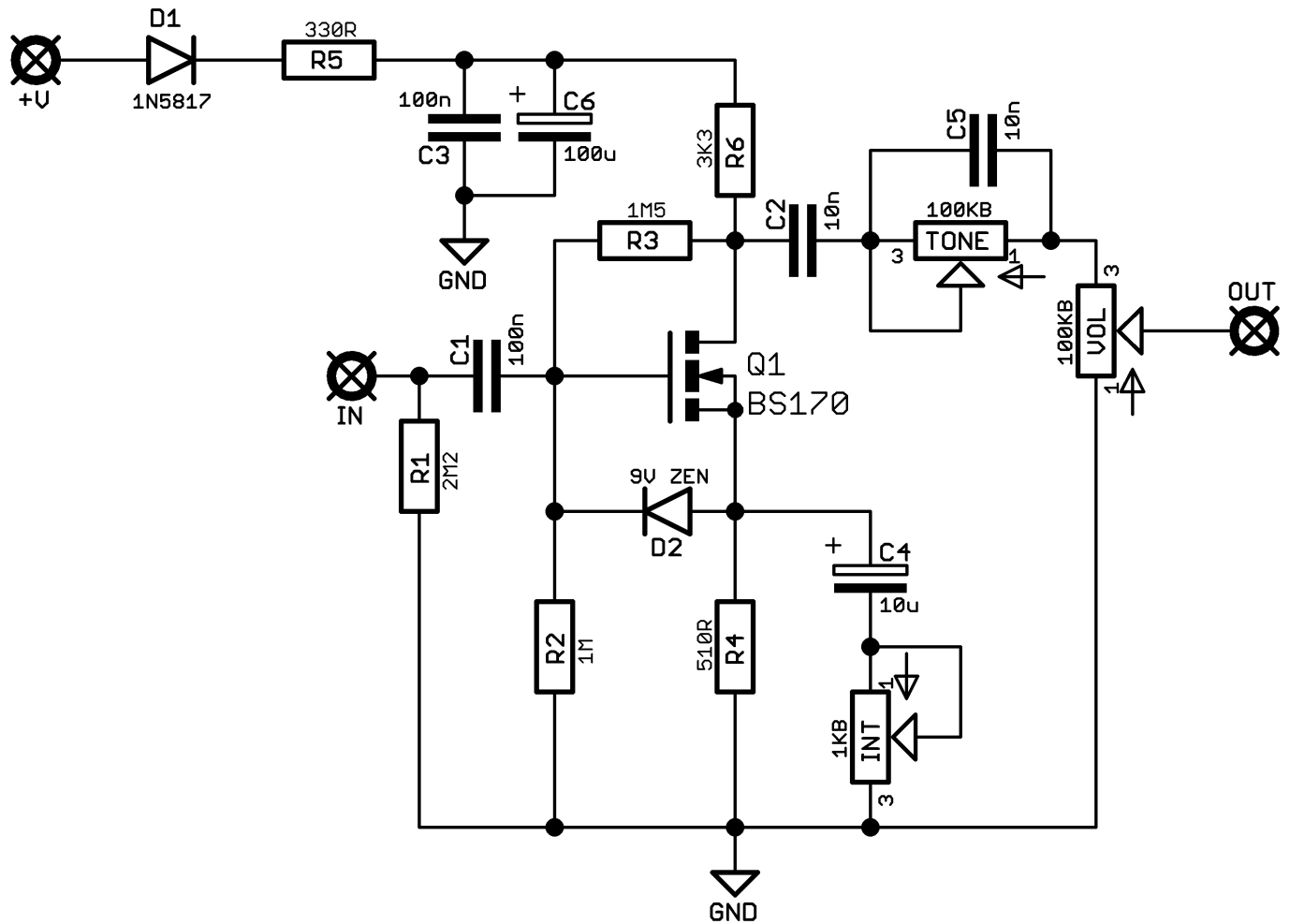


Before you dig in, ensure you download and read the **General Build Guide**.

It contains all the information you need for a successful outcome.



# Schematic + BOM

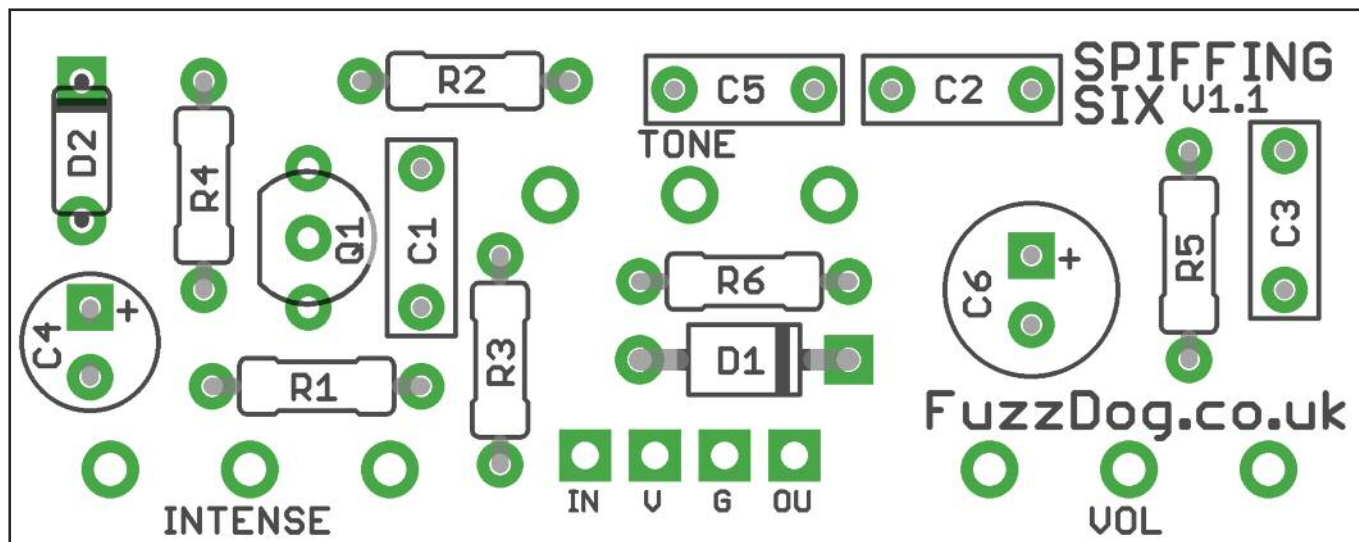


R1 2M2  
R2 1M  
R3 1M5  
R4 510R  
R5 330R  
R6 3K3

C1 100n  
C2 10n  
C3 100n  
C4 10u elec  
C5 10n  
C6 100u elec

Q1 BS170  
D1 1N5817  
D2 9V1 zener  
INT 1KB  
TONE 100KB  
VOL 100KB

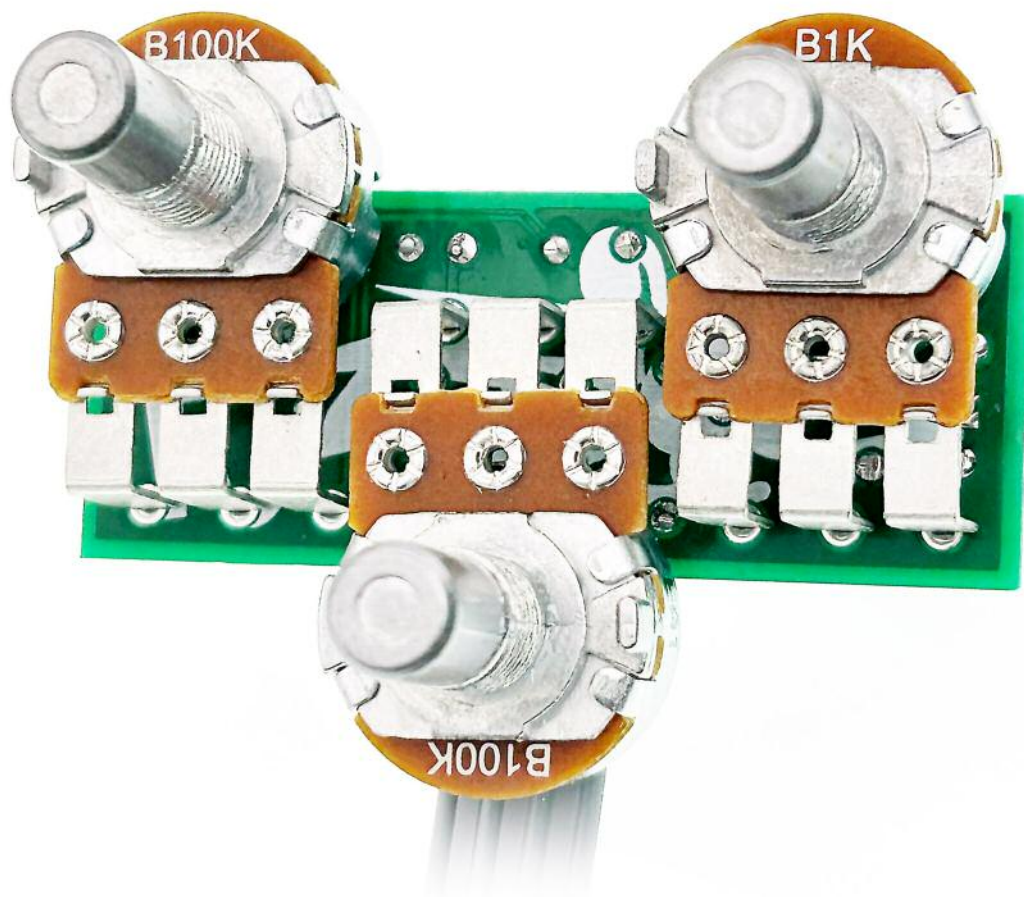
The tone control is  
incredibly subtle.



Snap the small metal tag off the pots so they can be mounted flush in the box.

You should solder all other board-mounted components before you solder the pots.

Once they're in place you'll have no access to much of the board.



# Drilling template

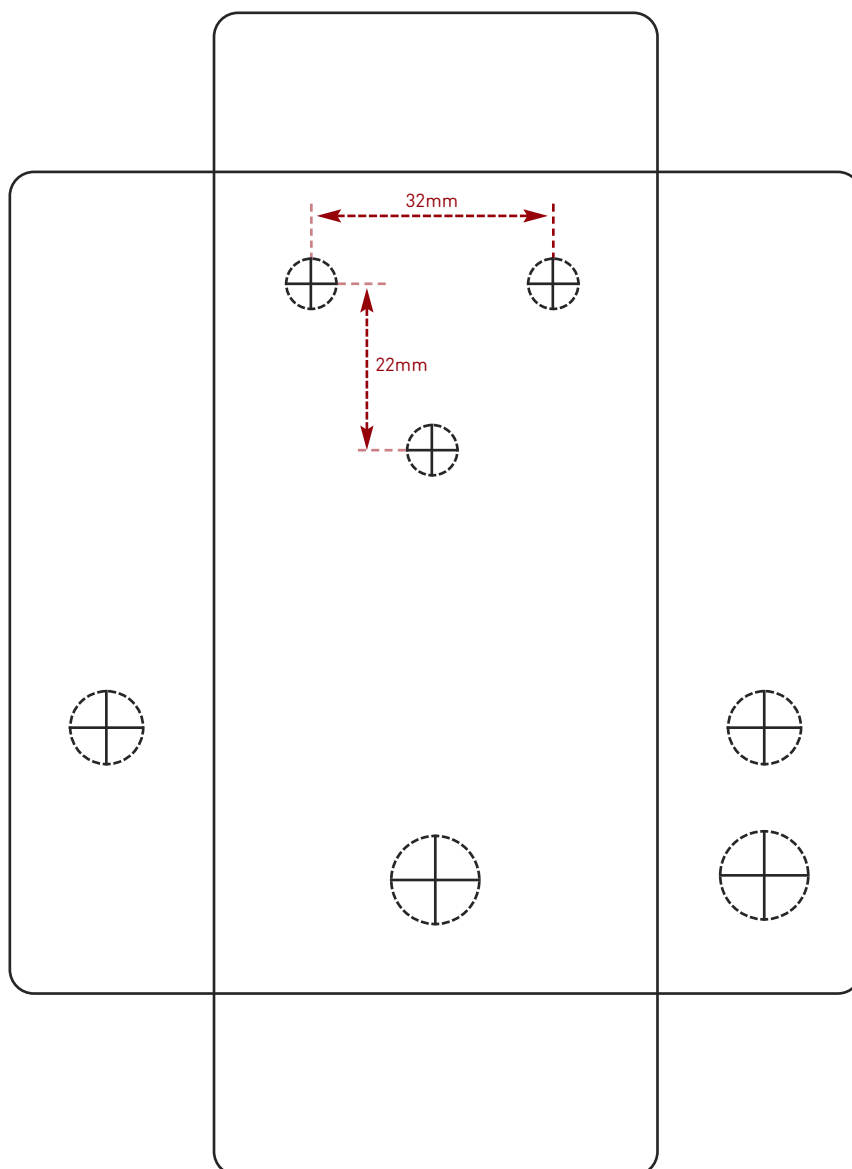
**Hammond 1590B - 60 x 111 x 31mm**

Drill sizes listed are minimum.

It's a good idea to add 1mm to anything mounted on the PCB that'll poke through the front of the enclosure.

Drill sizes:

Pots	7mm
Jacks	10mm
Footswitch	12mm
DC Socket	12mm
Toggle switches	6mm
Rotary switches	10mm



This template is a rough guide only. You should ensure correct marking of your enclosure before drilling. You use this template at your own risk.

Pedal Parts Ltd can accept no responsibility for incorrect drilling of enclosures.

FuzzDog.co.uk