

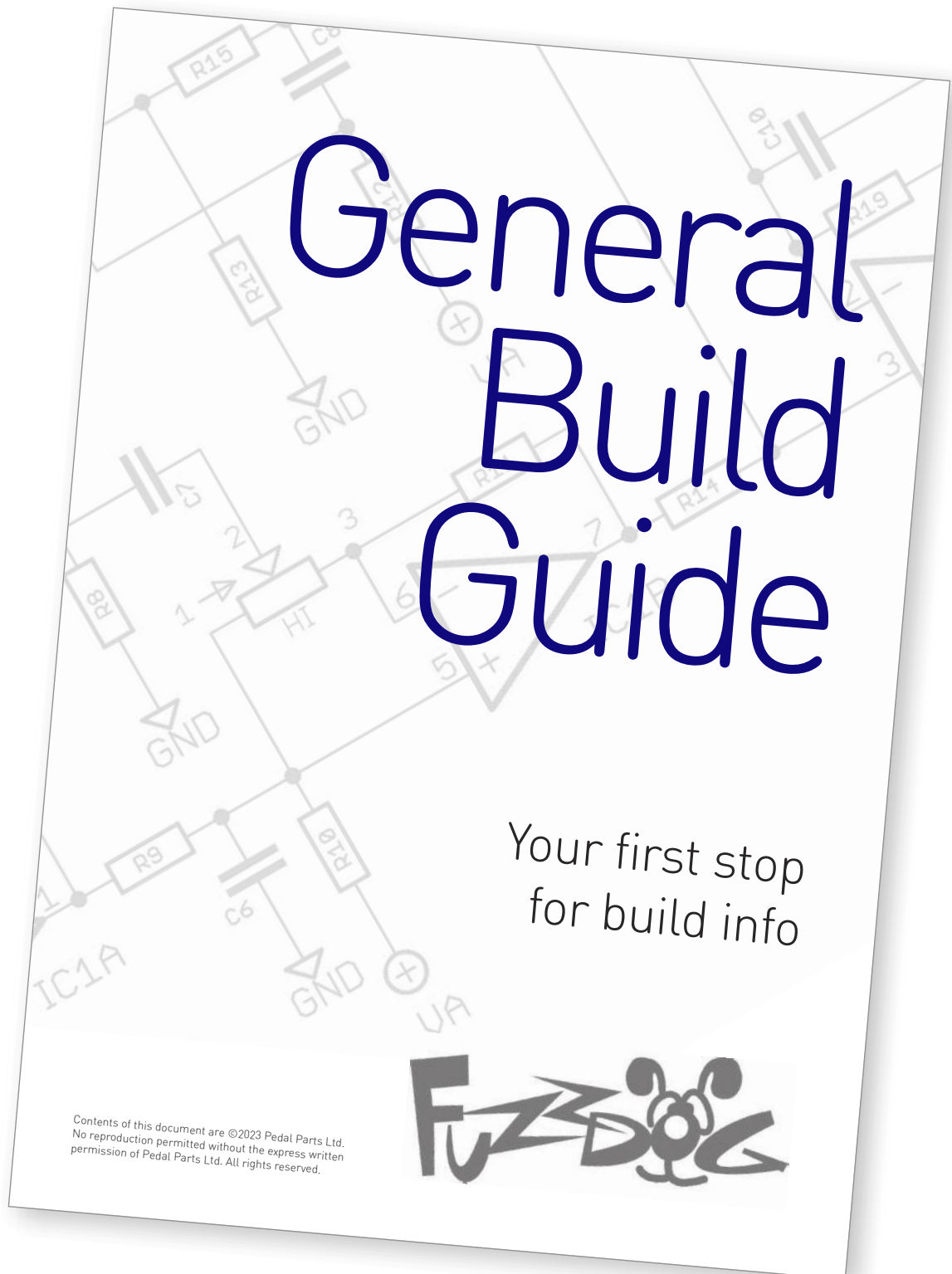
Sludgesicle

Single knob doom-monger

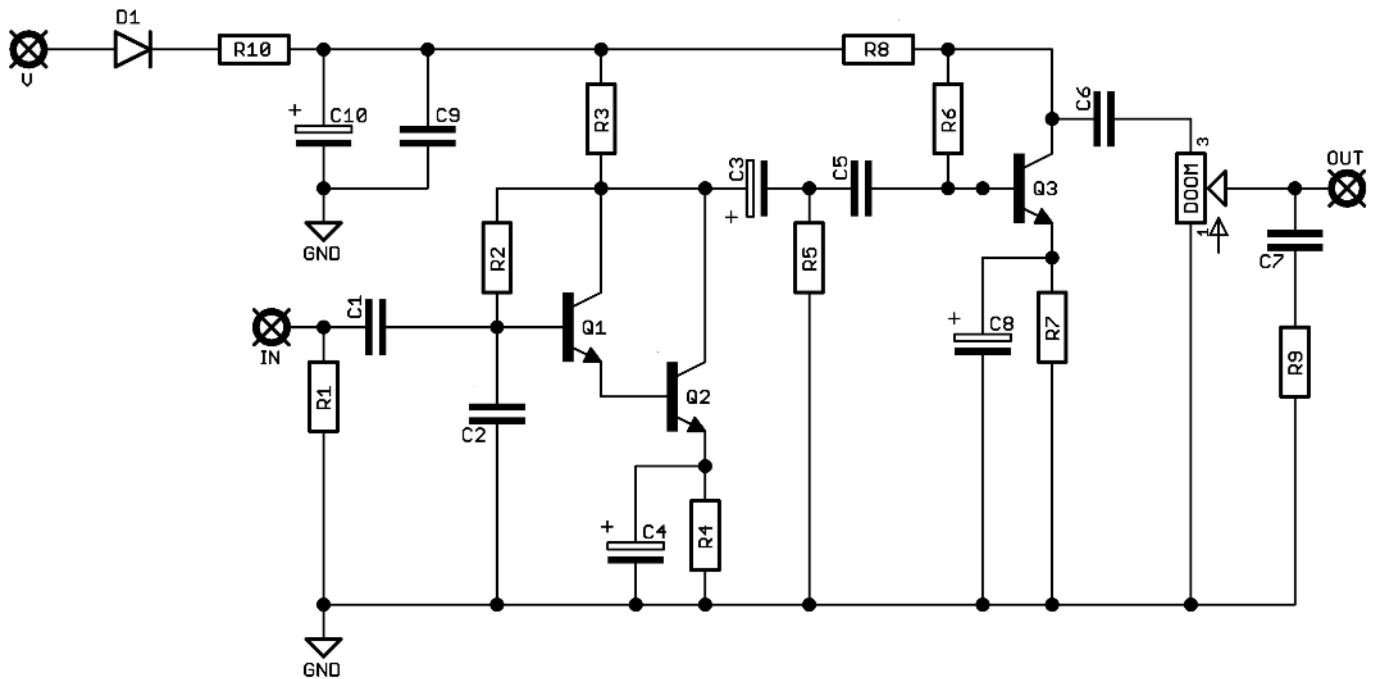


Before you dig in, ensure you download and read the **General Build Guide**.

It contains all the information you need for a successful outcome.



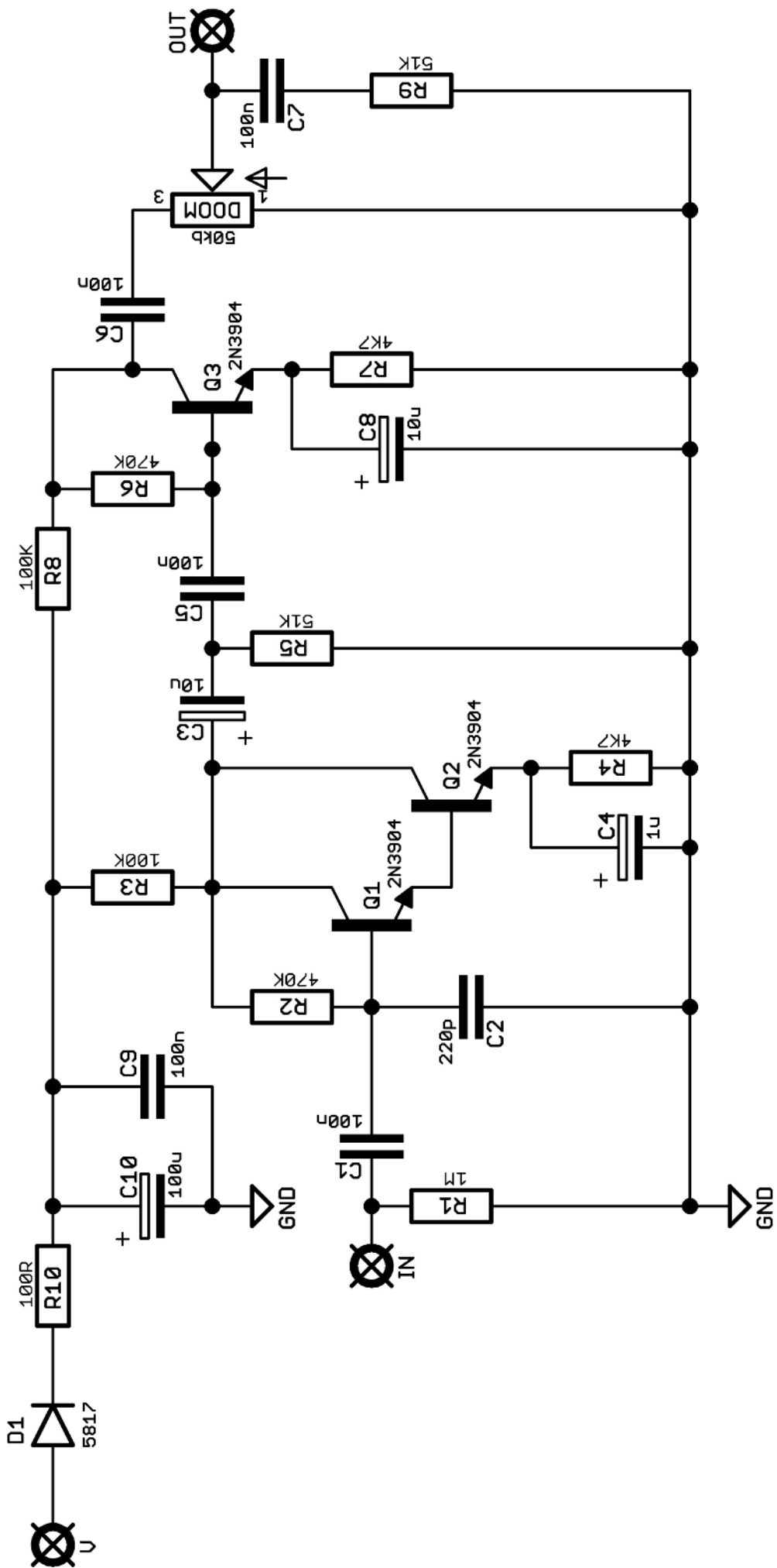
Schematic + BOM

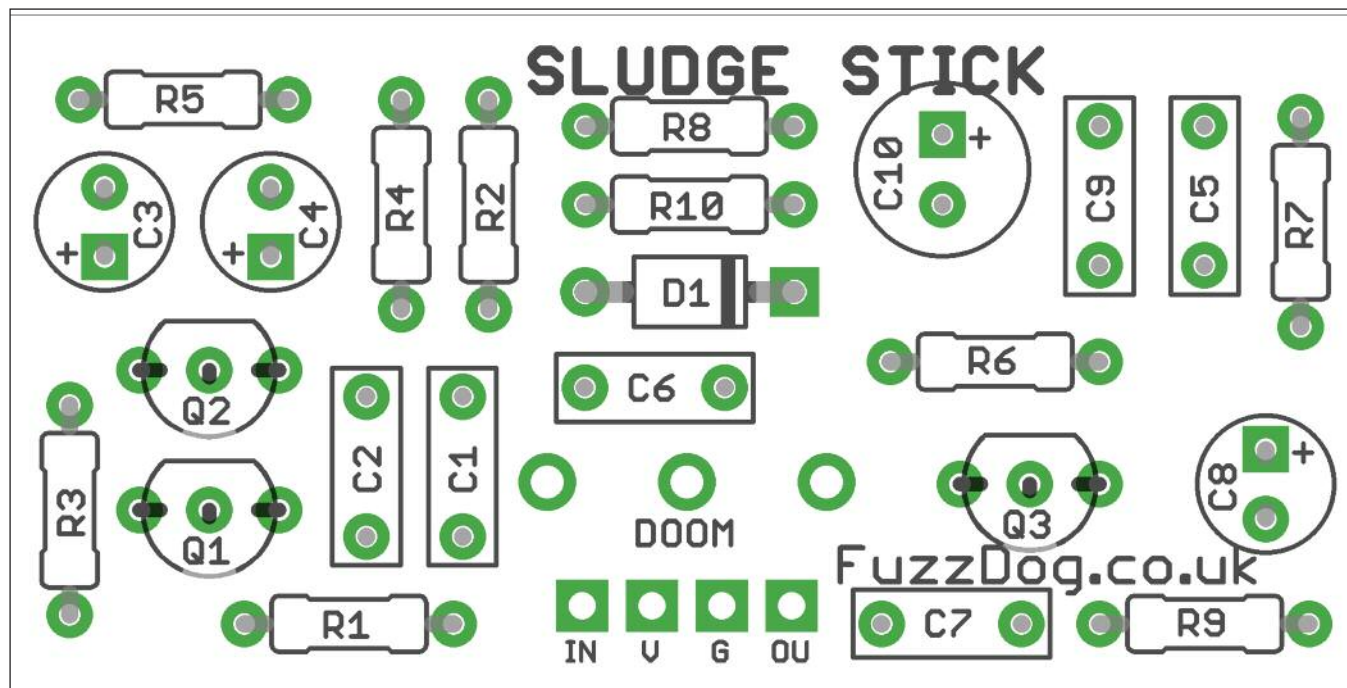


R1 1M
R2 470K
R3 100K
R4 4K7
R5 51K
R6 470K
R7 4K7
R8 100K
R9 51K
R10 100R

C1 100n
C2 220p
C3 10u elec
C4 1u elec
C5 100n
C6 100n
C7 100n
C8 10u elec
C9 100n
C10 100u elec

D1 1N5817
Q1-3 2N3904
DOOM 50KB

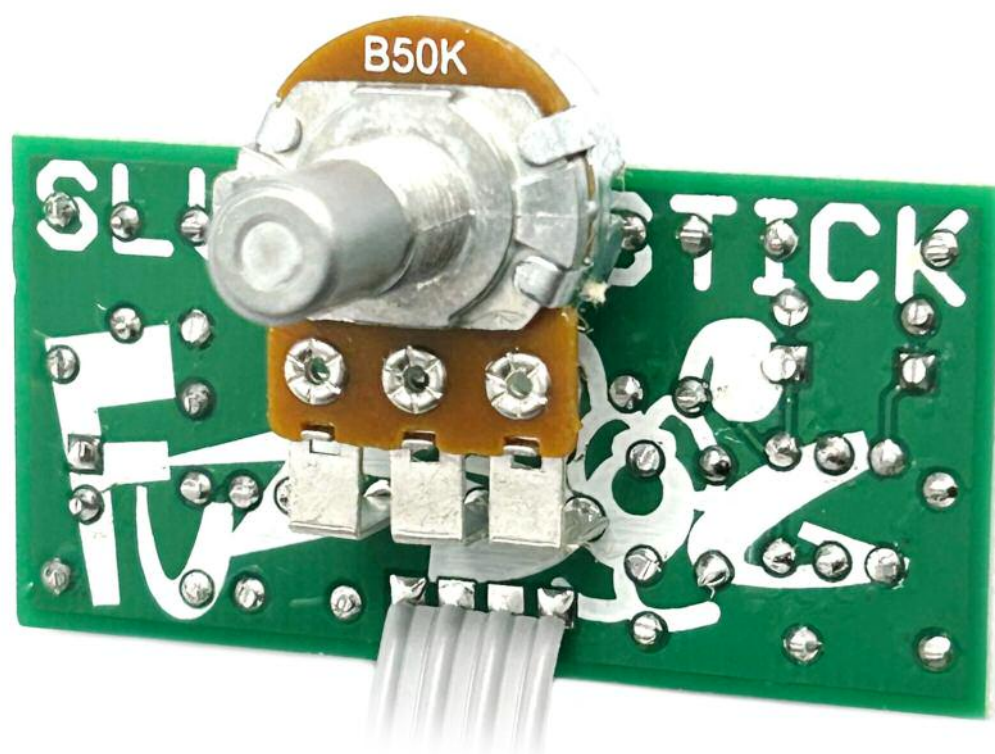




Snap the small metal tag off the pot so it can be mounted flush in the box.

You should solder all other board-mounted components before you solder the pot.

Once it's in place you'll have no access to much of the board.



Drilling template

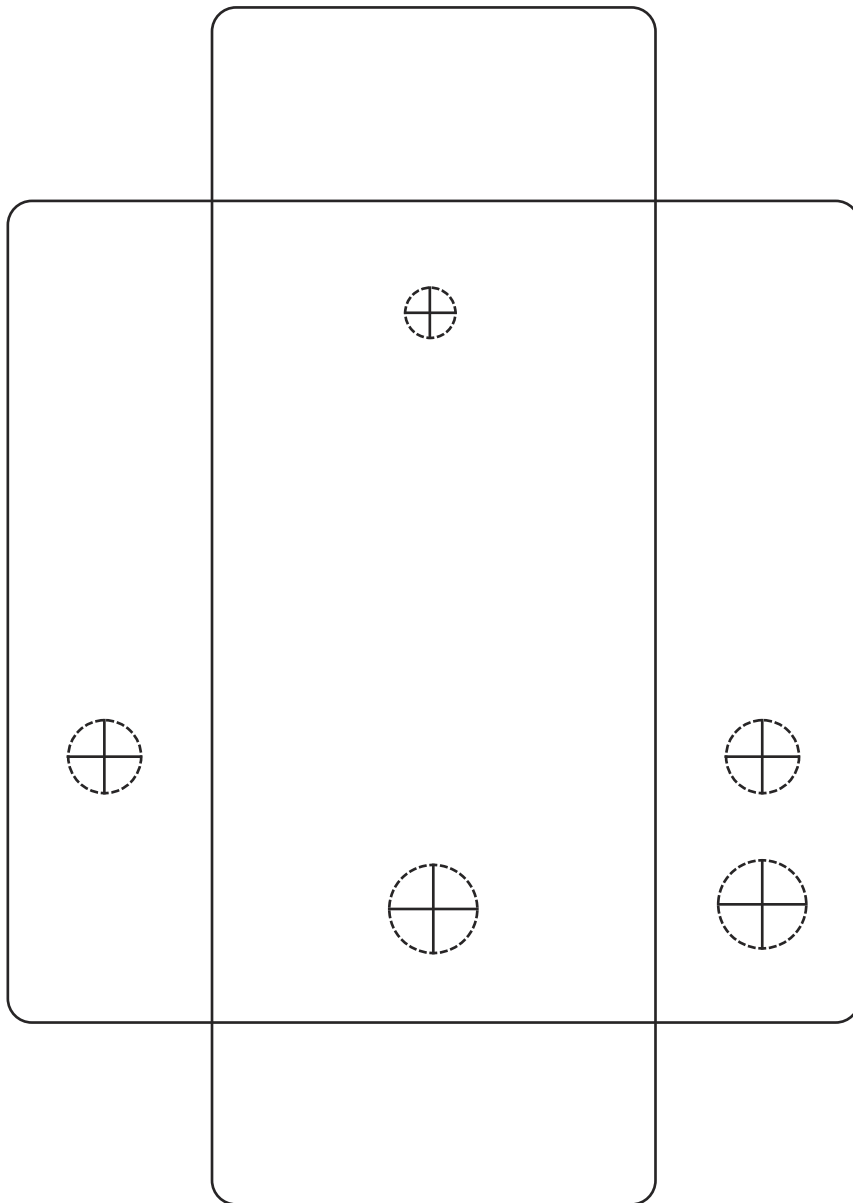
Hammond 1590B - 60 x 111 x 31mm

Drill sizes listed are minimum.

It's a good idea to add 1mm to anything mounted on the PCB that'll poke through the front of the enclosure.

Drill sizes:

Pots	7mm
Jacks	10mm
Footswitch	12mm
DC Socket	12mm
Toggle switches	6mm
Rotary switches	10mm



This template is a rough guide only. You should ensure correct marking of your enclosure before drilling. You use this template at your own risk.

Pedal Parts Ltd can accept no responsibility for incorrect drilling of enclosures.

FuzzDog.co.uk