

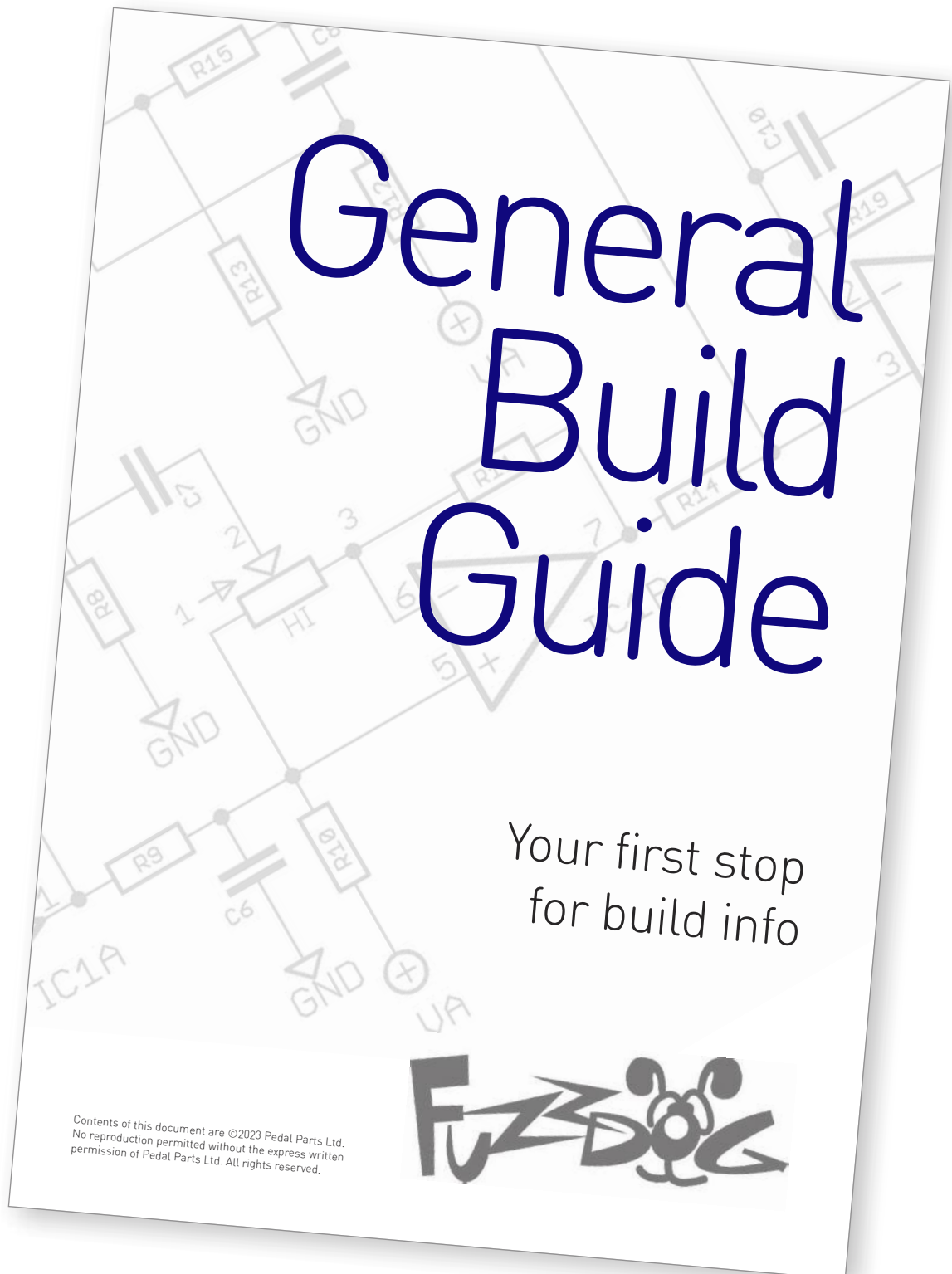
Shush Pre

All the goodness of an
Echoplex EP-3 preamp

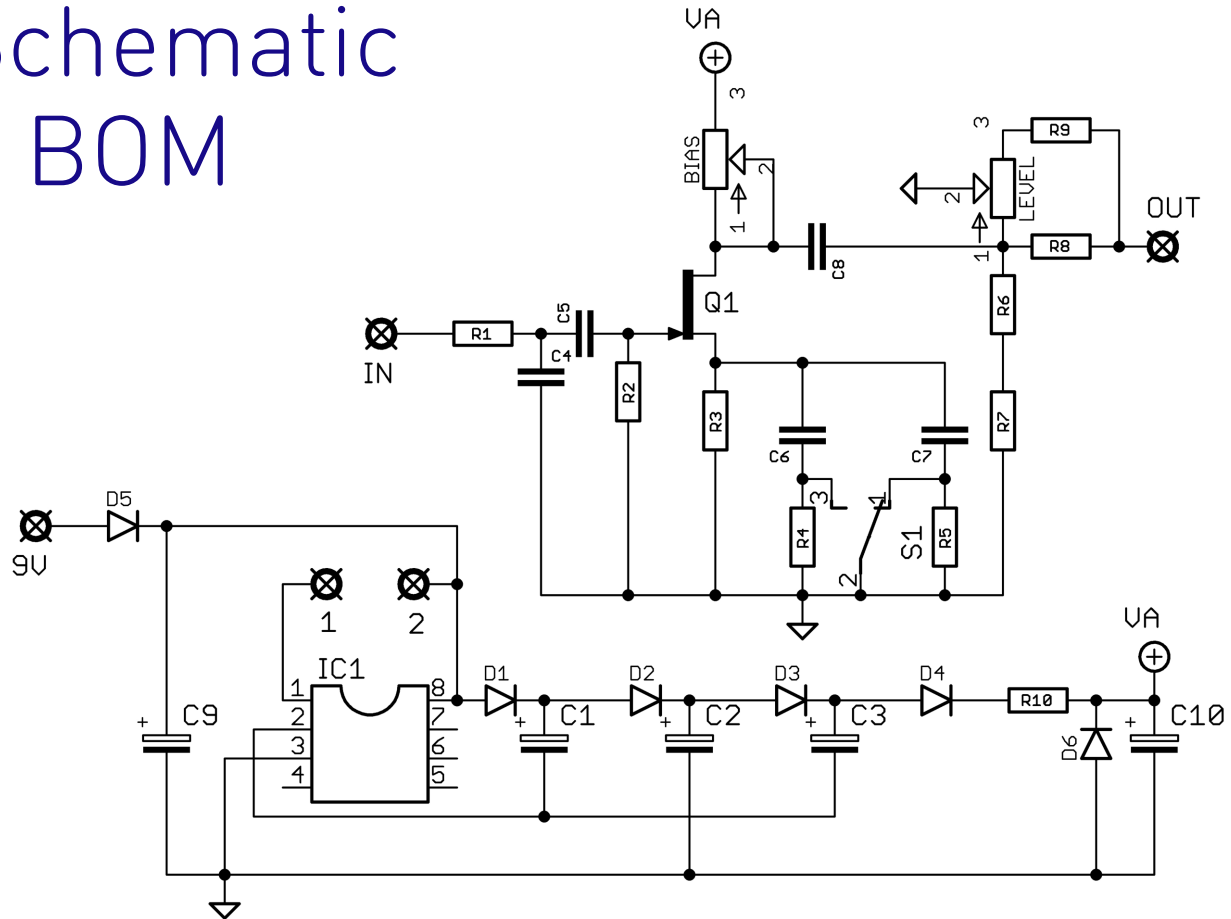


Before you dig in, ensure you download and read the **General Build Guide**.

It contains all the information you need for a successful outcome.



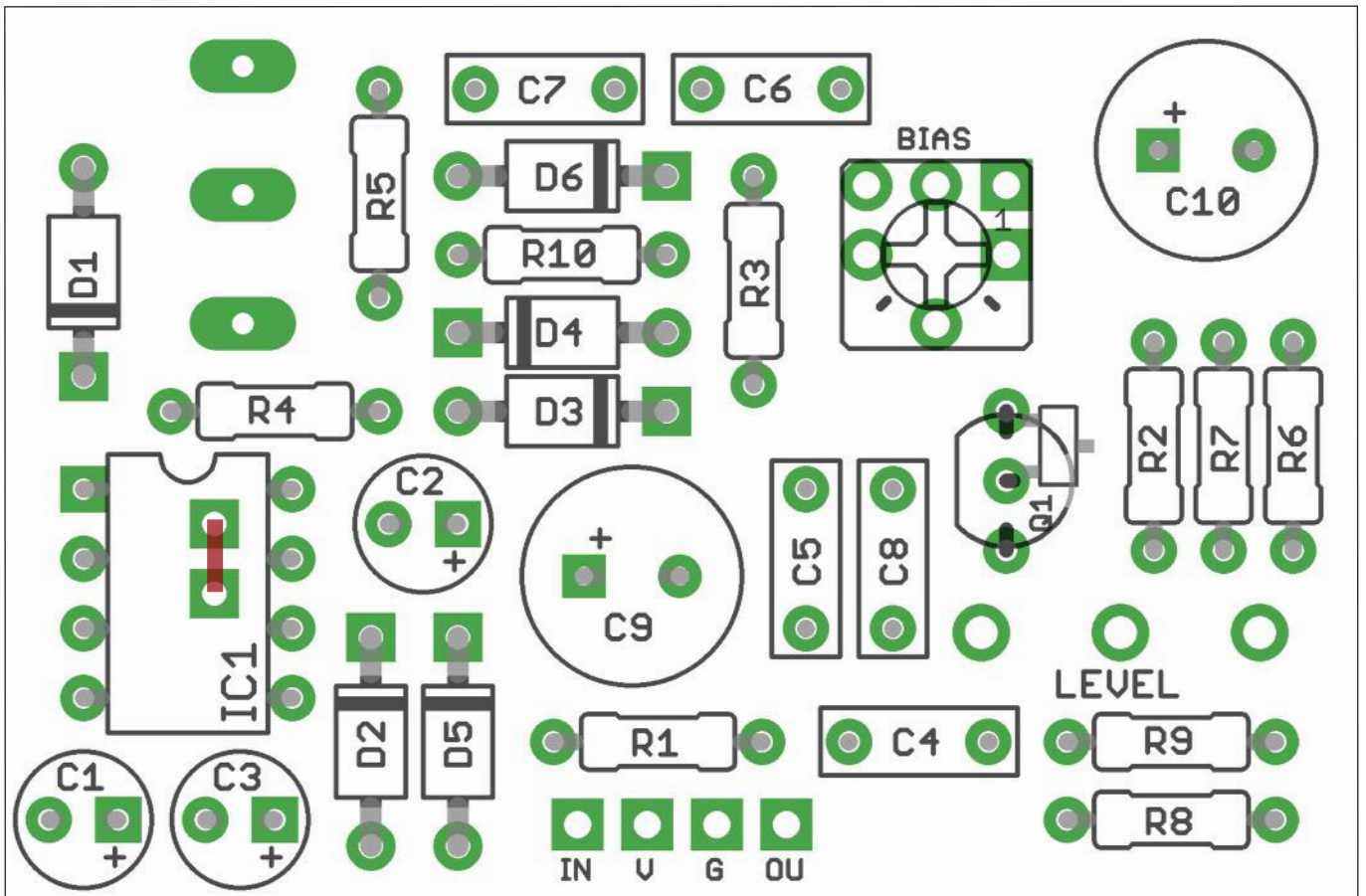
Schematic + BOM



R1	100K	C1	10u elec	D1-5	1N5817
R2	1M	C2	10u elec	D6	1N4748A
R3	3K3	C3	10u elec	Q1	2N5457*
R4	1M	C4	220p	IC1	7660SEPA**
R5	1M	C5	22n	LEVEL	500KA
R6	20K	C6	22n	T1	50K trimmer
R7	220K	C7	10n	S1	SPDT ON-OFF-ON
R8	100K	C8	100n		
R9	100K	C9	220u elec		
R10	1K	C10	220u elec		

*Spaces are provided for through hole or the SMT equivalent (MMBF5457).

**Use 7660SEPA, MAX1044S, or LT1054. See the note on page 4 regarding jumper.



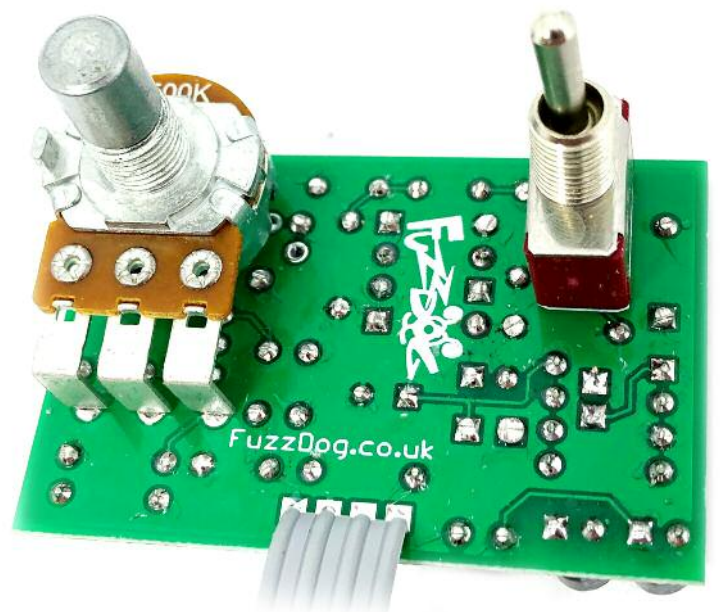
Snap the small metal tag off the pot so it can be mounted flush in the box.

You should solder all other board-mounted components before you solder the pot. Once they're in place you'll have no access to much of the board.

Charge Pump

If using 7660 or MAX1044 you need to place a jumper across the pads as shown above in red.

LT1054 - leave the jumper out.



Drilling template

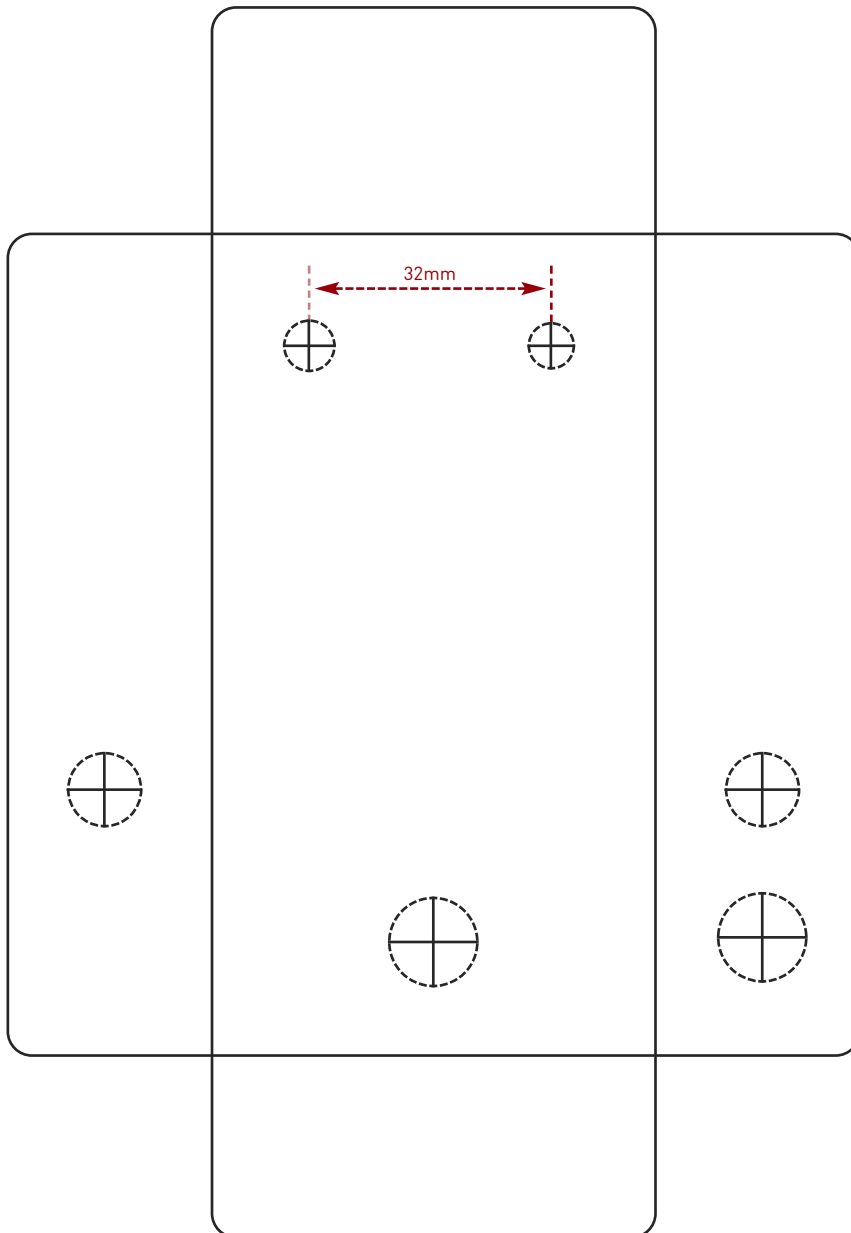
Hammond 1590B - 60 x 111 x 31mm

Drill sizes listed are minimum.

It's a good idea to add 1mm to anything mounted on the PCB that'll poke through the front of the enclosure.

Drill sizes:

Pots	7mm
Jacks	10mm
Footswitch	12mm
DC Socket	12mm
Toggle switches	6mm
Rotary switches	10mm



This template is a rough guide only. You should ensure correct marking of your enclosure before drilling. You use this template at your own risk.

Pedal Parts Ltd can accept no responsibility for incorrect drilling of enclosures.

FuzzDog.co.uk