

Shrieking Eel

Josh Scott's embellished
Electra

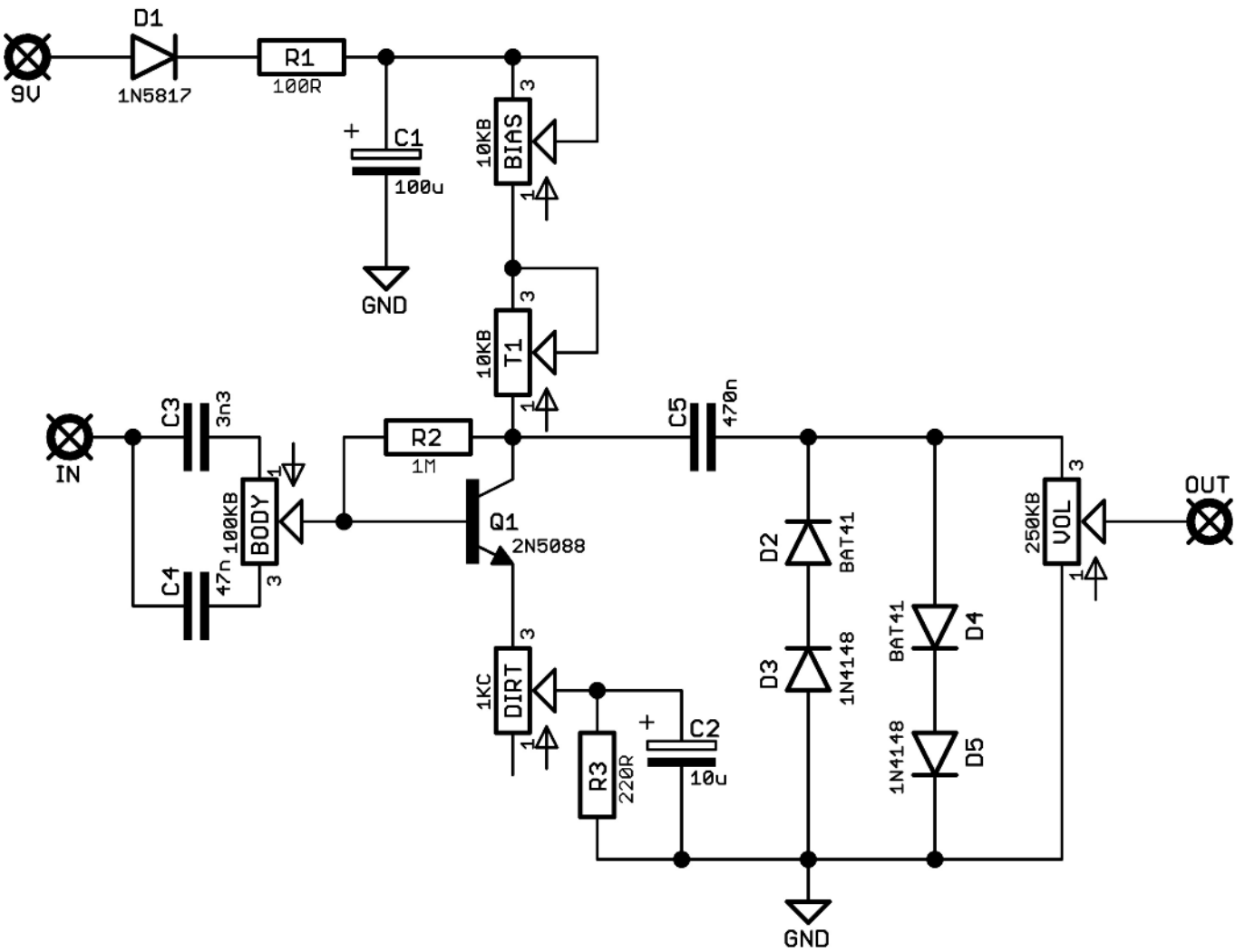


Before you dig in, ensure you download and read the **General Build Guide**.

It contains all the information you need for a successful outcome.

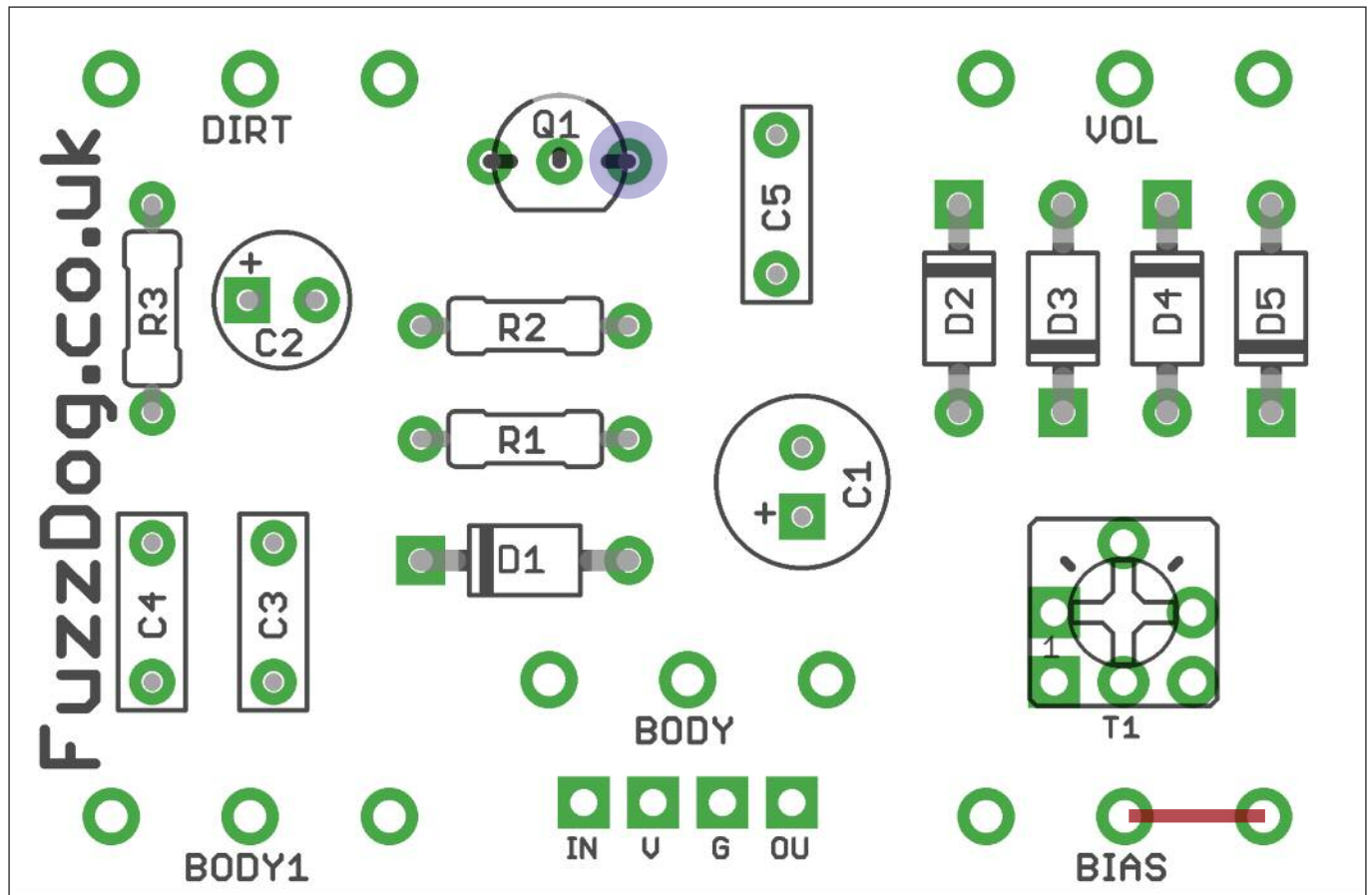


Schematic + BOM



R1	100R	D1	1N5817	BIAS	10KB / Empty*
R2	1M	D2	1N4148	BODY	100KB
R3	220R	D3	BAT41	DIRT	1KC
		D4	1N4148	VOL	250KB
C1	100u elec	D5	BAT41		
C2	10u elec			T1	20-25K Trimmer
C3	3n3	Q1	2N5088		

*If you want to stick to the original 3-knob version, omit the BIAS pot. Jumper required. See next page.



Snap the small metal tag off the pots so they can be mounted flush in the box.

You should solder all other board-mounted components before you solder the pots.

Once they're in place you'll have no access to much of the board.

BIAS CONTROL

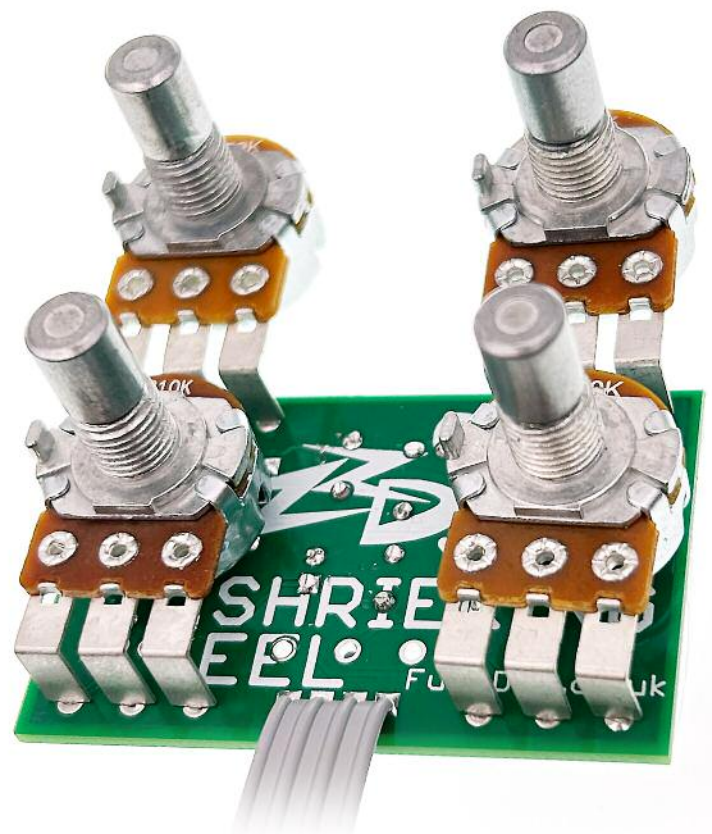
Josh's design has a trimmer for a set-and-forget bias voltage on Q1. We know most people like to tweak things, so we've added the option for an external bias pot. Our recommended set-up for this configuration is to set your pot at 12 o'clock then adjust the trimmer until you get around 4.5V on the collector of Q1 (marked above). You then have some over and under bias adjustment with the pot. There's no rules though. Feel free to adjust the trimmer until you get a range of adjustment with the pot you're happy with.

If you're leaving out the pot, add a jumper as shown in red above.

BODY POT

Use the appropriate set of pads depending on whether you're going for a three or four pot build.

No jumpers required on the unused set.



Drilling template

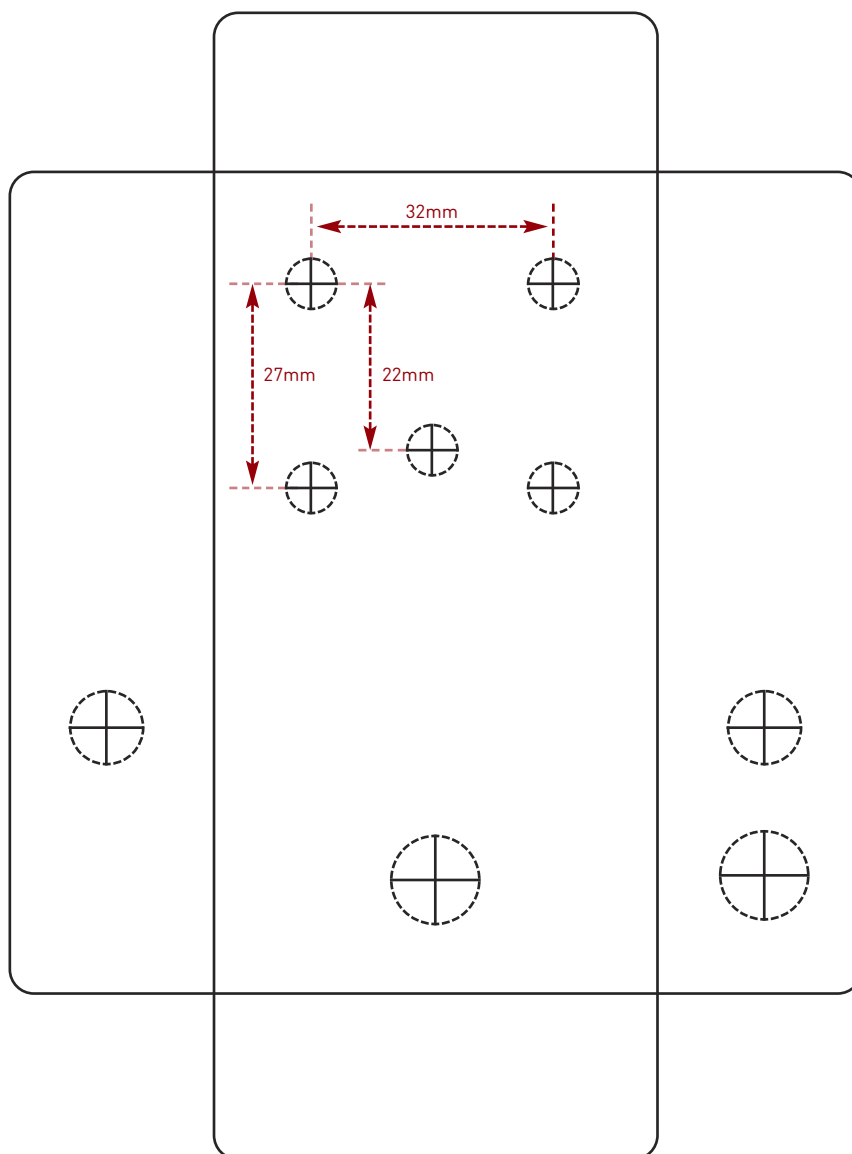
Hammond 1590B - 60 x 111 x 31mm

Drill sizes listed are minimum.

It's a good idea to add 1mm to anything mounted on the PCB that'll poke through the front of the enclosure.

Drill sizes:

Pots	7mm
Jacks	10mm
Footswitch	12mm
DC Socket	12mm
Toggle switches	6mm
Rotary switches	10mm



This template is a rough guide only. You should ensure correct marking of your enclosure before drilling. You use this template at your own risk.

Pedal Parts Ltd can accept no responsibility for incorrect drilling of enclosures.

FuzzDog.co.uk