

# Schaller Fuzz

Fat vintage silicon fuzz fun

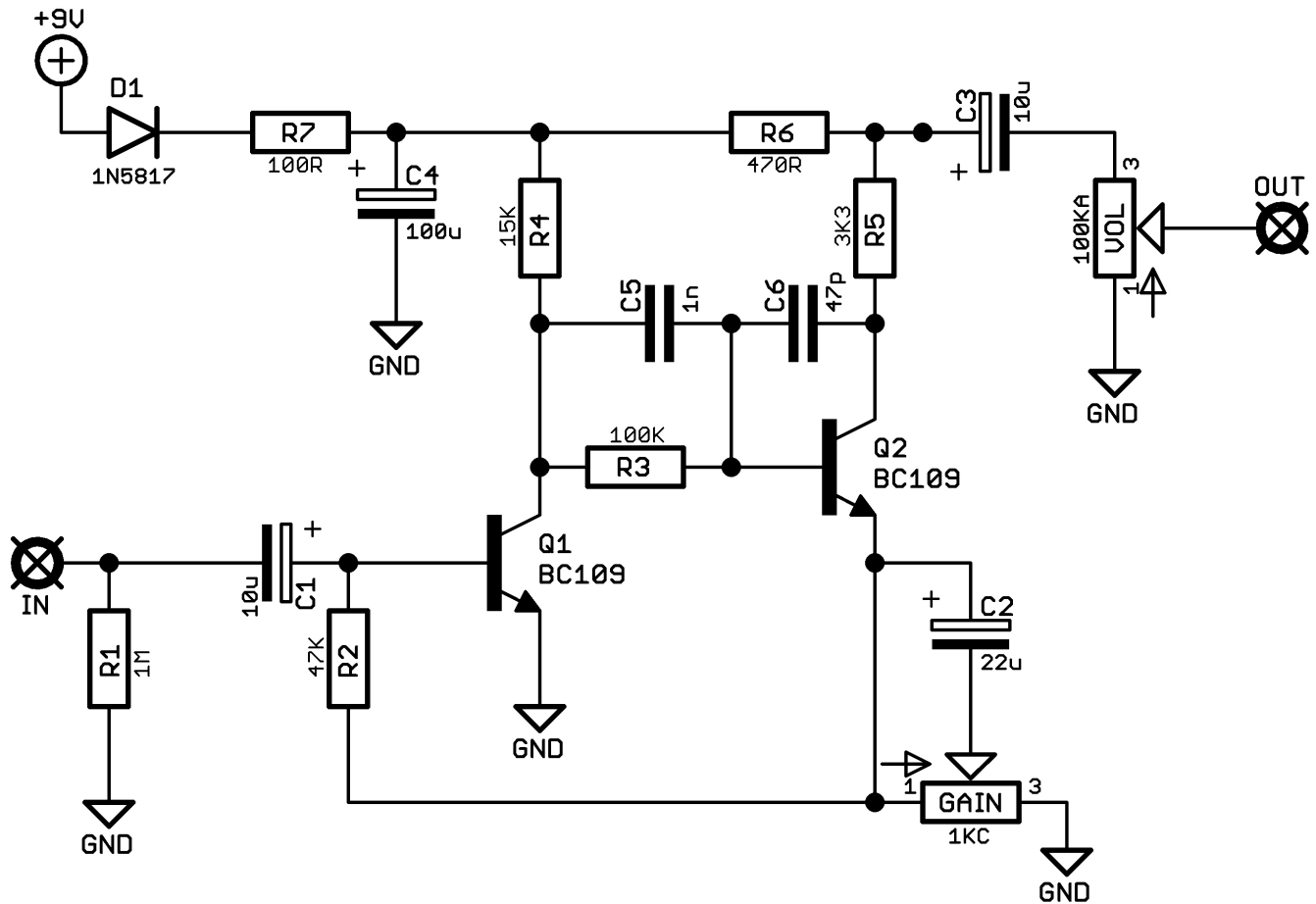


Before you dig in, ensure you download and read the **General Build Guide**.

It contains all the information you need for a successful outcome.



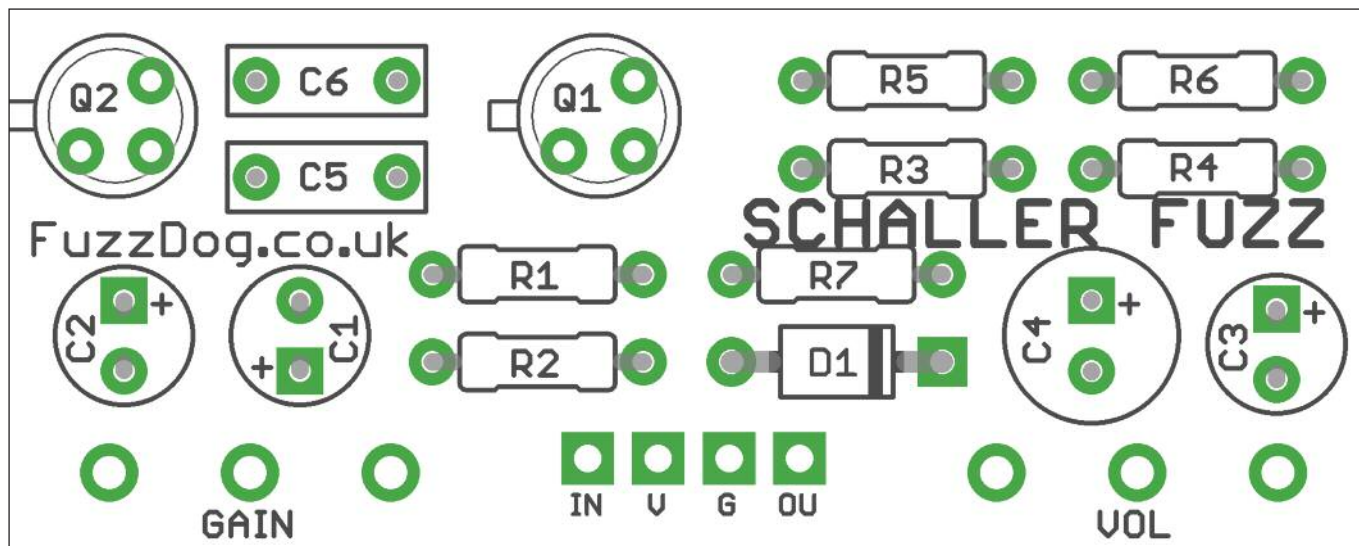
# Schematic + BOM



R1 1M  
R2 47K  
R3 100K  
R4 15K  
R5 3K3  
R6 470R  
R7 100R

C1 10u elec  
C2 22u elec  
C3 10u elec  
C4 100u elec  
C5 1n  
C6 47p

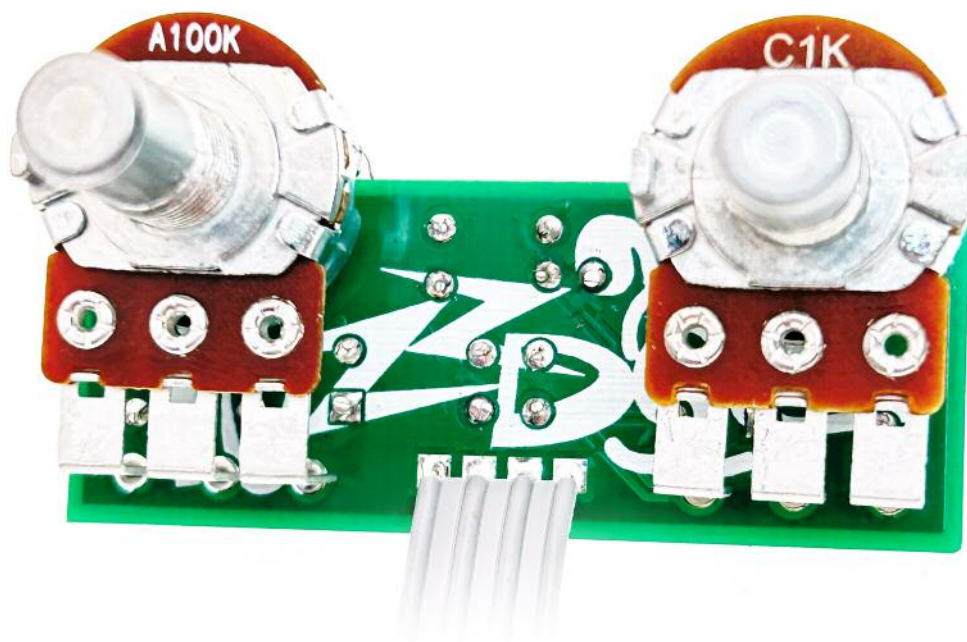
D1 1N5817  
Q1-2 BC109  
GAIN 1KC  
VOL 100KA



Snap the small metal tag off the pots so they can be mounted flush in the box.

You should solder all other board-mounted components before you solder the pots.

Once they're in place you'll have no access to much of the board.



# Drilling template

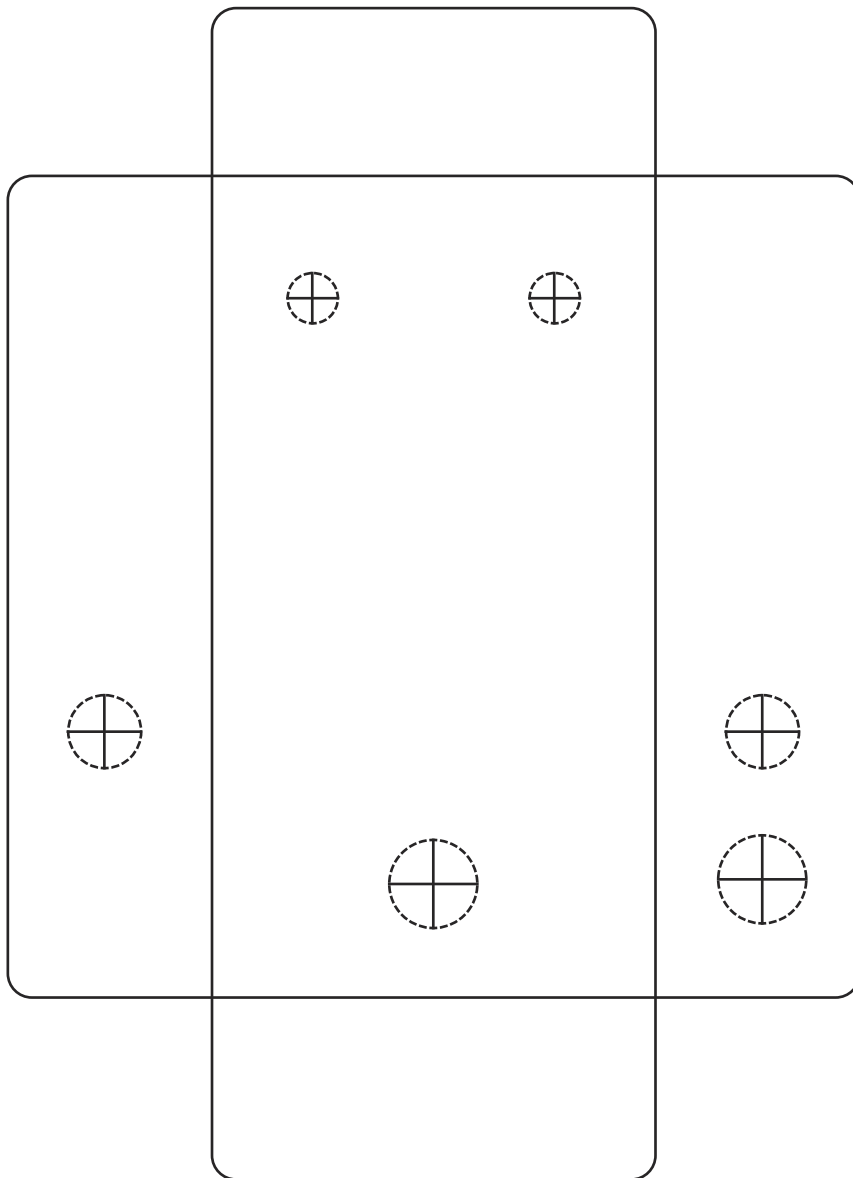
**Hammond 1590B - 60 x 111 x 31mm**

Drill sizes listed are minimum.

It's a good idea to add 1mm to anything mounted on the PCB that'll poke through the front of the enclosure.

Drill sizes:

Pots	7mm
Jacks	10mm
Footswitch	12mm
DC Socket	12mm



This template is a rough guide only. You should ensure correct marking of your enclosure before drilling. You use this template at your own risk.

Pedal Parts Ltd can accept no responsibility for incorrect drilling of enclosures.

FuzzDog.co.uk