

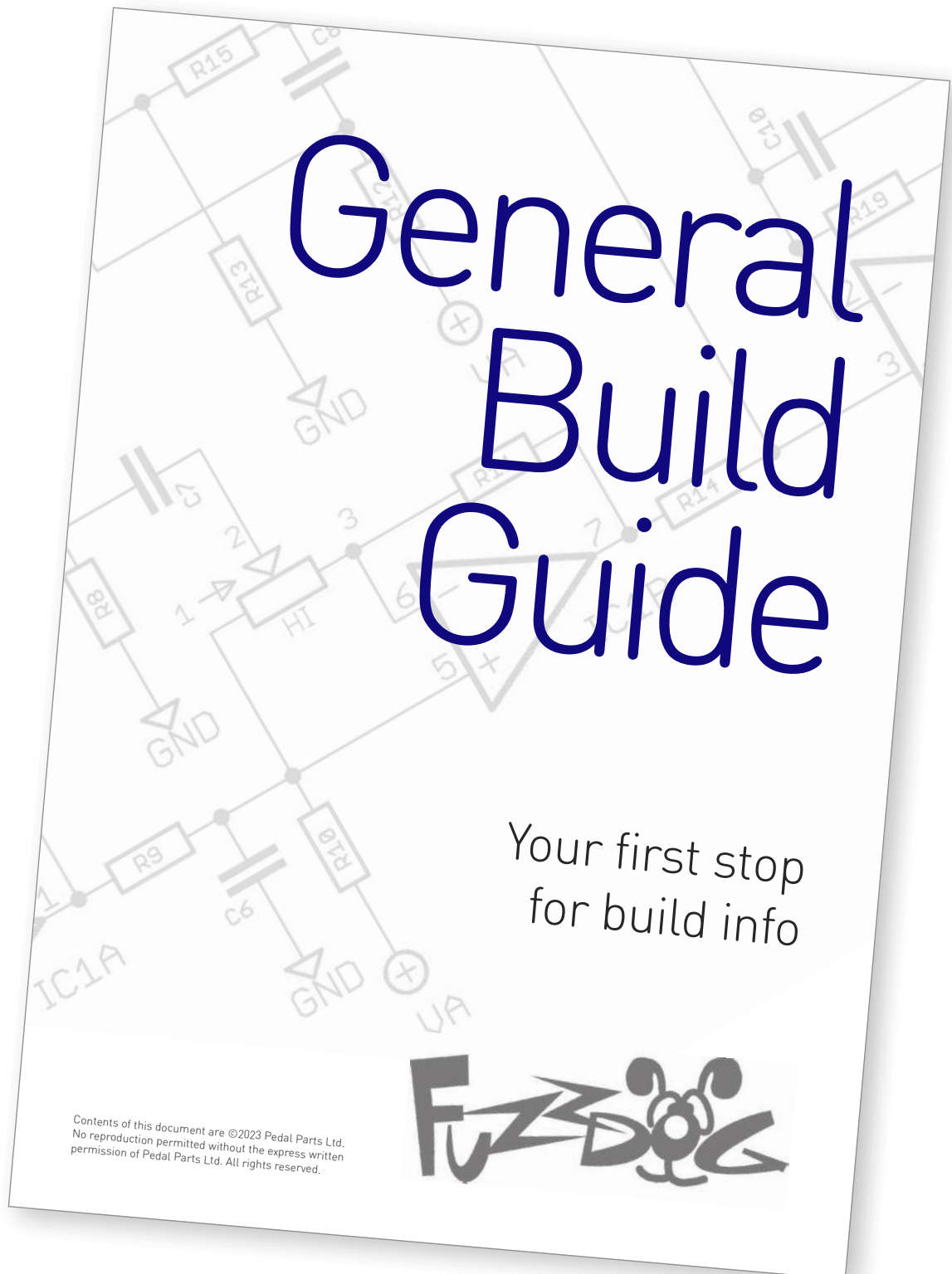
Satch

Tape-style saturation

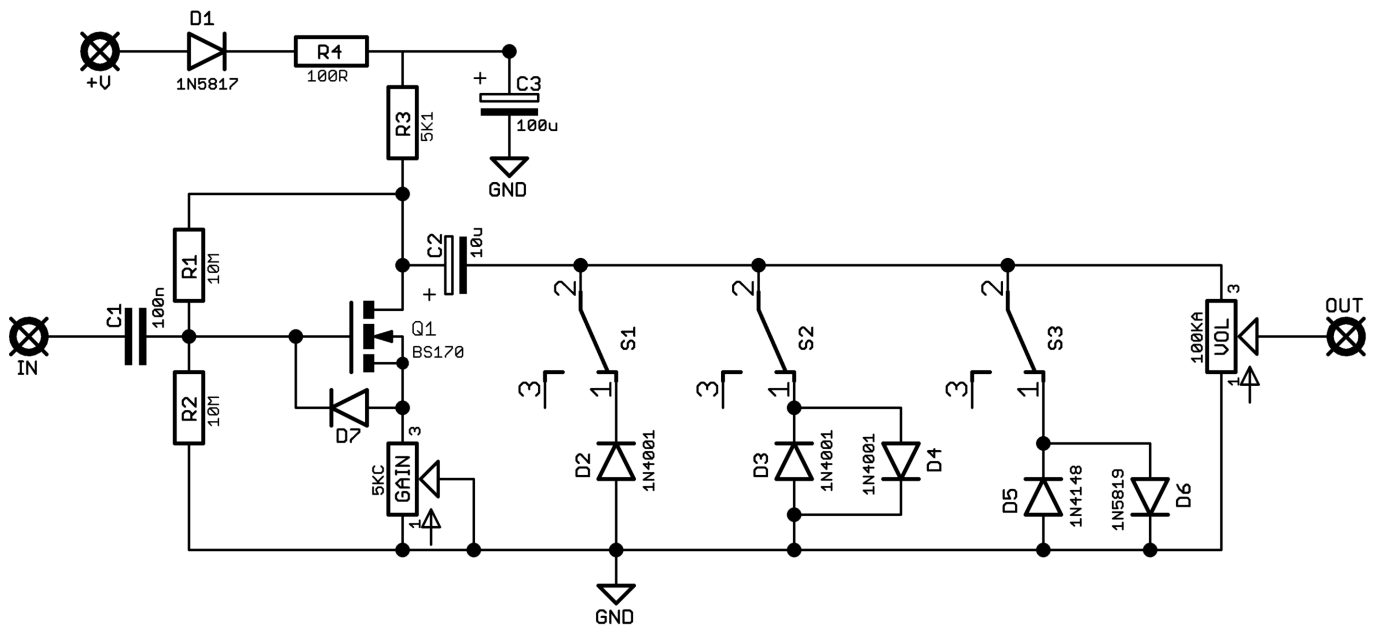


Before you dig in, ensure you download and read the **General Build Guide**.

It contains all the information you need for a successful outcome.



Schematic + BOM



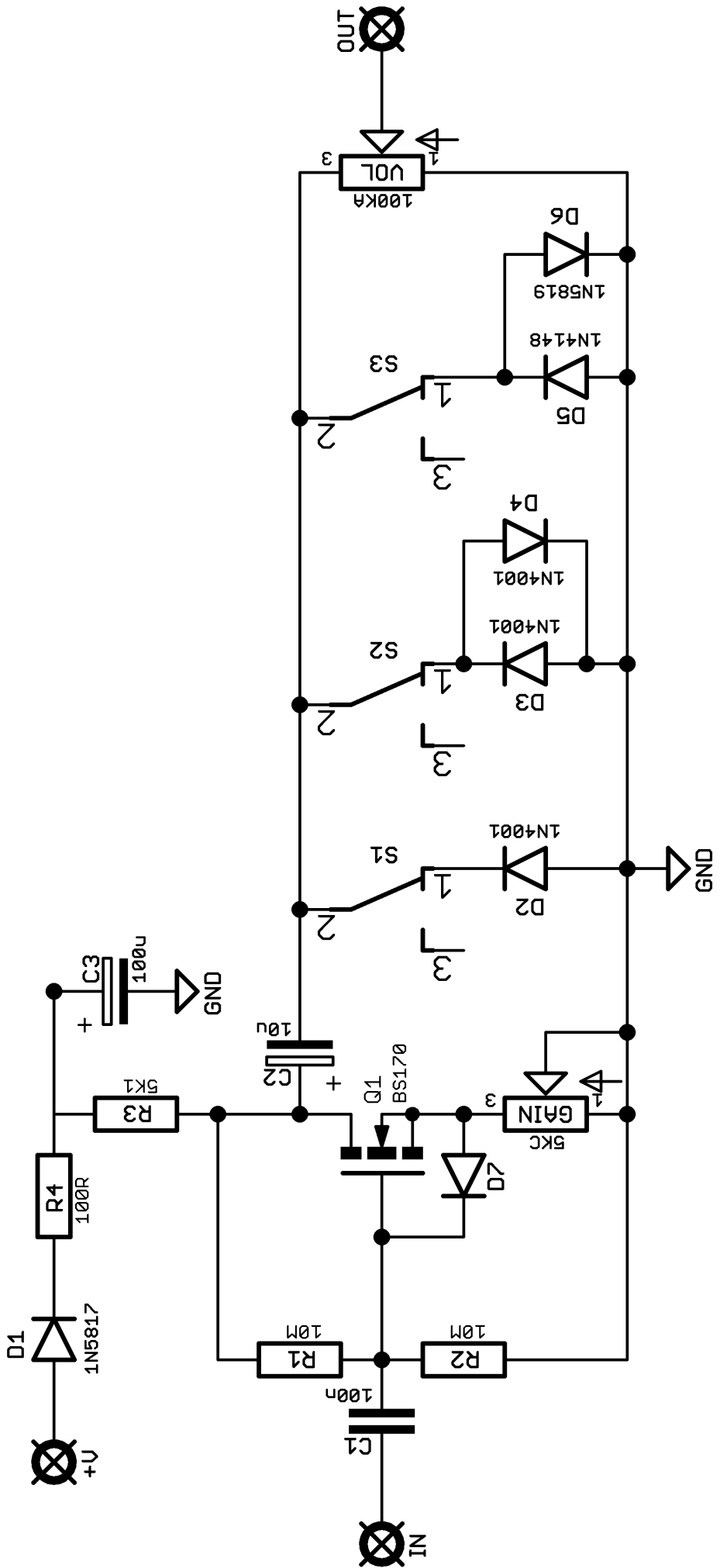
R1 10M
 R2 10M
 R3 5K1
 R4 100R

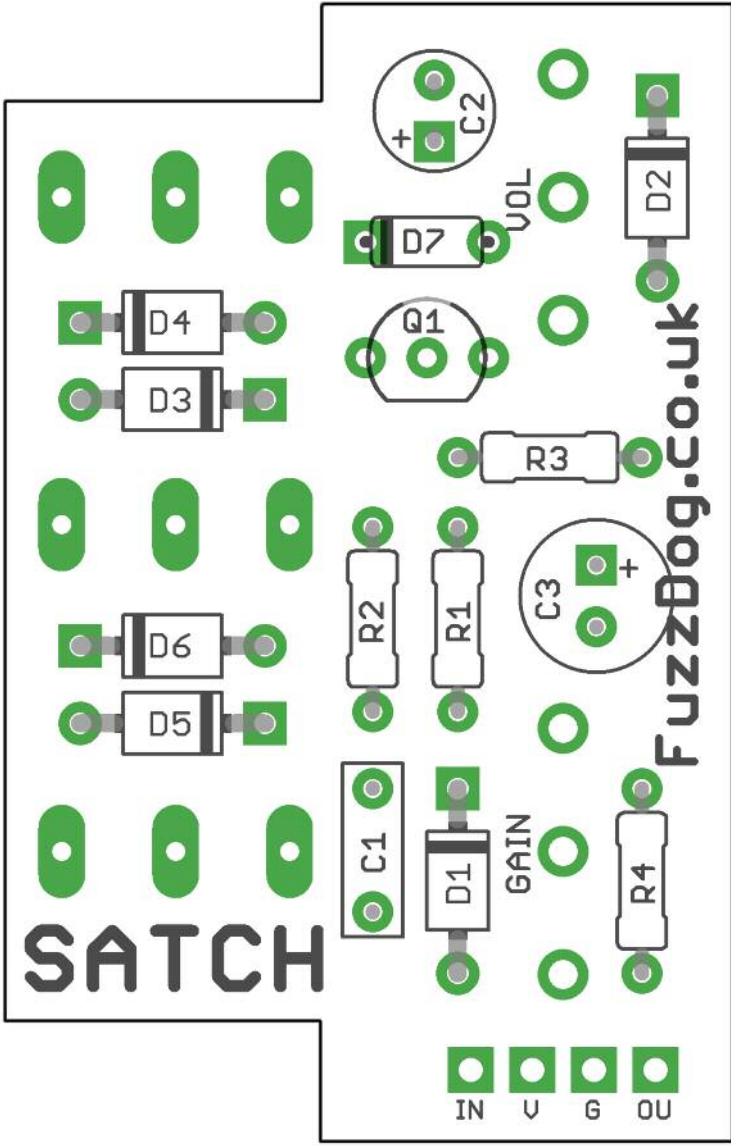
C1 100n
 C2 10u elec
 C3 100u elec
 S1-3 SPDT ON-ON

D1 1N5817
 D2-4 1N4001
 D5 1N4148
 D6 1N5819

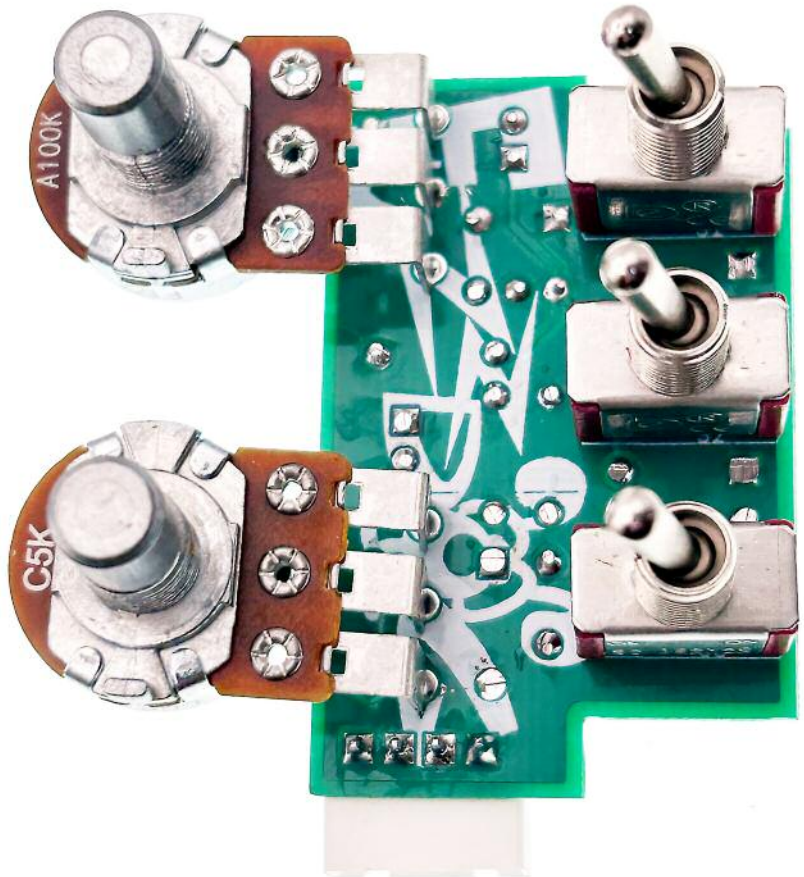
Q1 BS170

GAIN 5KC
 VOL 100KA





Snap the small metal tags off the pots so they can be mounted flush in the box.



Drilling template

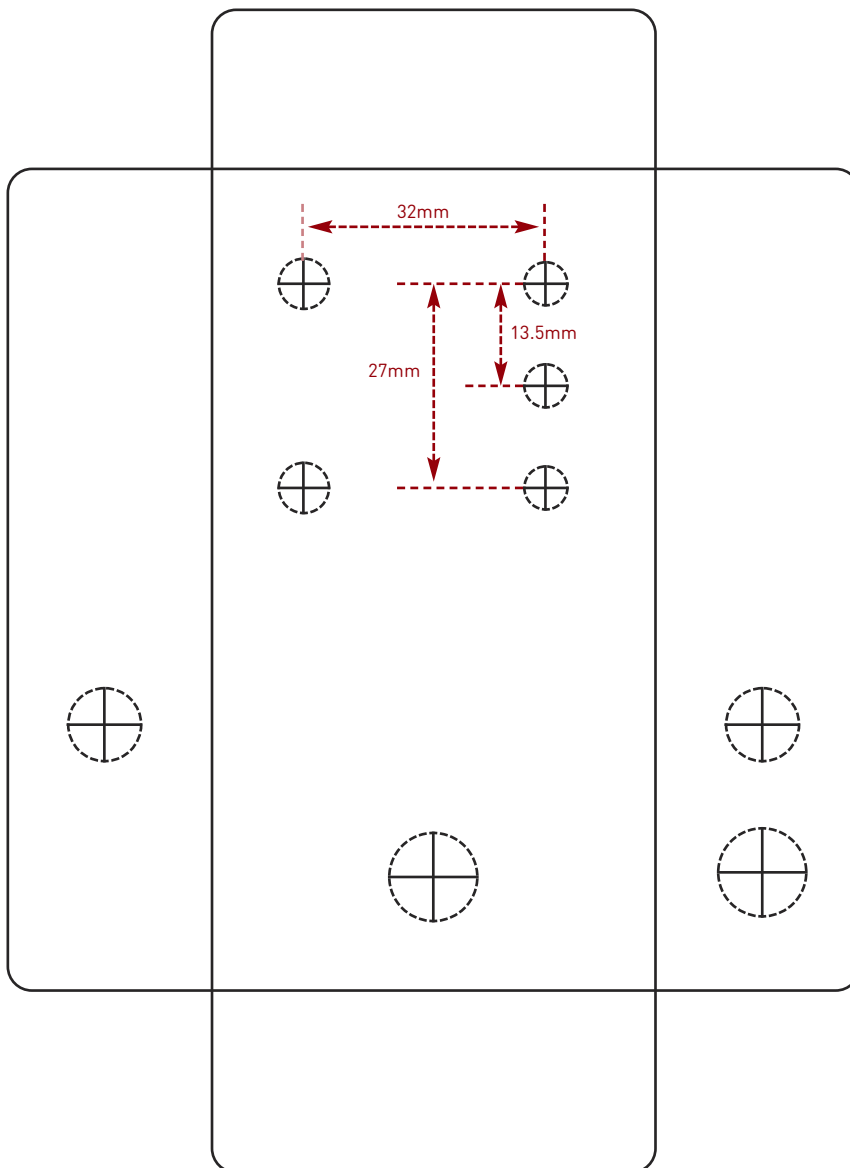
Hammond 1590B - 60 x 111 x 31mm

Drill sizes listed are minimum.

It's a good idea to add 1mm to anything mounted on the PCB that'll poke through the front of the enclosure.

Drill sizes:

Pots	7mm
Jacks	10mm
Footswitch	12mm
DC Socket	12mm
Toggle switches	6mm
Rotary switches	10mm



This template is a rough guide only. You should ensure correct marking of your enclosure before drilling. You use this template at your own risk.

Pedal Parts Ltd can accept no responsibility for incorrect drilling of enclosures.

FuzzDog.co.uk