

Ruby / Noisy Cricket

Super-sexy
mini amp fun

PedalParts.co.uk

The Ruby is a sweet little half-watt practice amp by Run Off Groove. Keeping it nice and simple with just volume and tone to play with.

Beavis Audio's Noisy Cricket is built on the foundations of the Ruby, adding a tone control and a 'Grit' switch which adds a little bit more oomph.

Due to space limitations and the overwhelming urge to fit as much functionality as possible into one face of a 1590B, this version of the PCB dispenses with the normal Tone pot in favour of a space-saving three-way Tone switch. If you want to wire up the tone pot as normal you can, but you won't fit it onto the front face of the enclosure.

In the BOMs listed in the following pages, if the component isn't mentioned, don't put anything in that spot. Anything that requires jumper wires is listed as such.

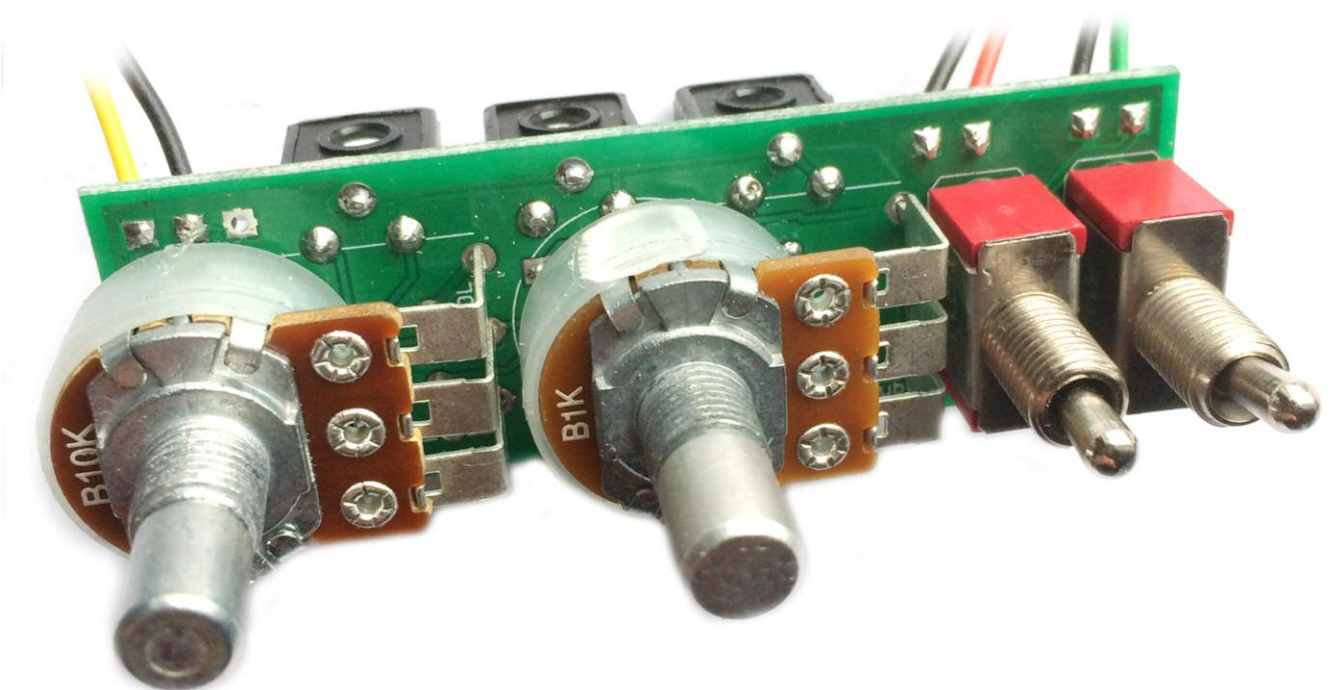
There are spots on the PCB for optional LED and current limiting resistor. If you want to add one, just run wires from the LED spots to your LED.

When assembling you should leave the pots until all the other board-mounted components are in place. You'll have no access to their pads once the pots are in place.

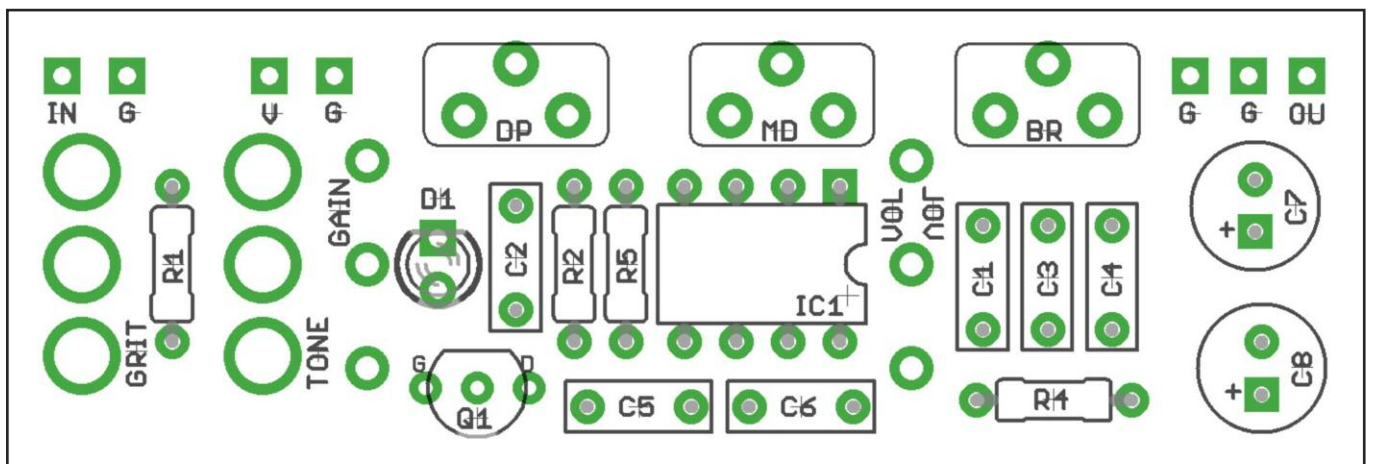
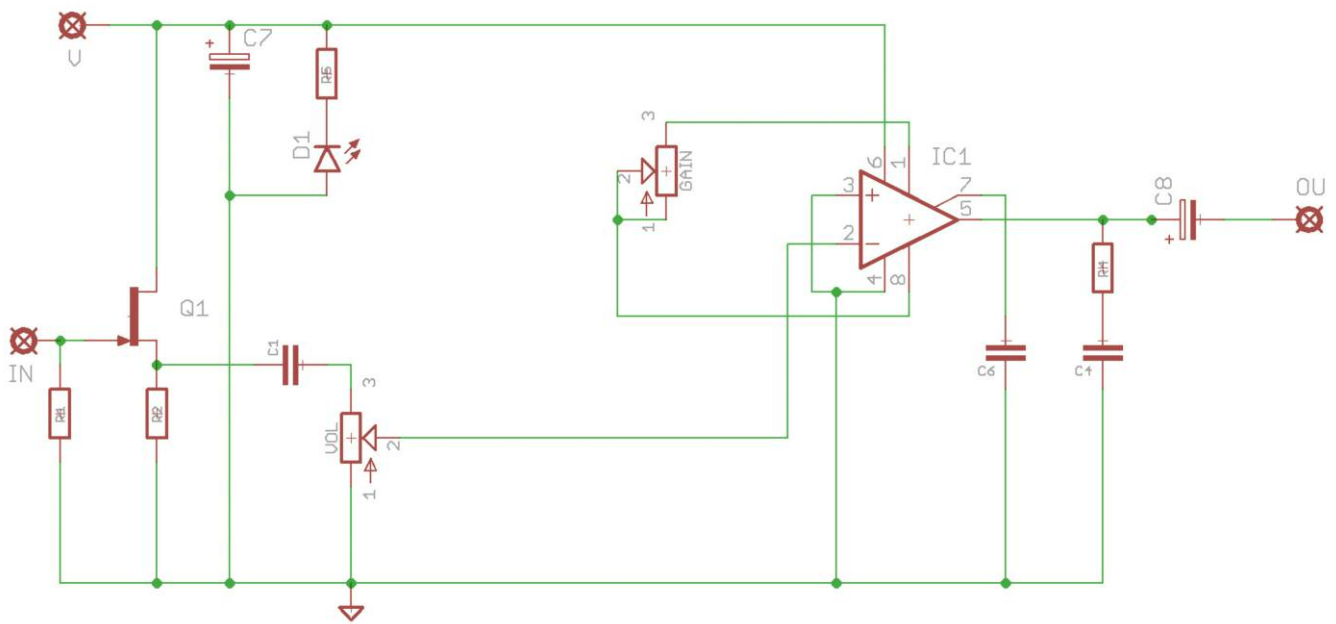
As there's some wiggle room in the switch pads it's recommended you solder the switches in place with the board positioned in the enclosure. Place them in their spots then put the whole assembly in the enclosure. Hold it in place by lightly tightening the pot nuts, then solder them where they naturally lie.

For more info on both the RUBY and the NOISY CRICKET head over to these wonderful sites:

runoffgroove.com beavisaudio.com



RUBY



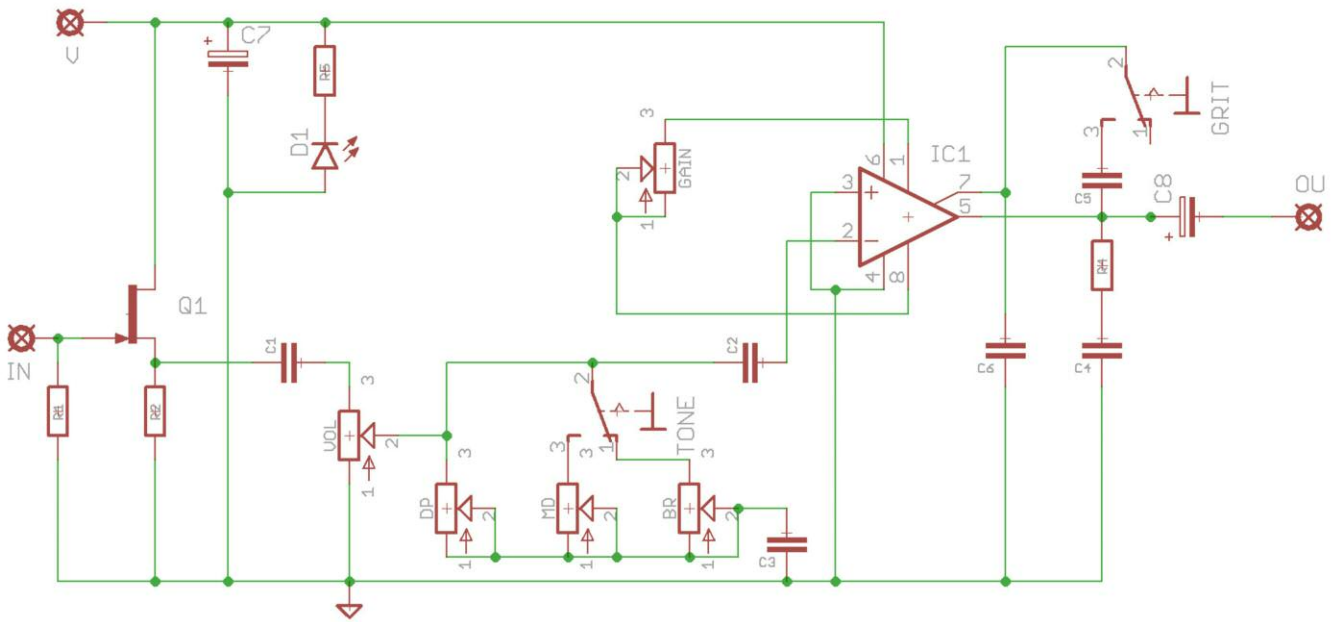
BOM

R1	1M	C1	47n	Q1	**
R2	3K9	C2	Jumper	IC1	LM386
R4	10R	C4	47n	VOL	10KB
R5	CLR*	C6	100n	GAIN	1KB
		C7	100u elec		
		C8	100u elec		

*Optional current limiting resistor for LED.

**Your choice of FET - 2N5457, MPF102, J201 etc.

NOISY CRICKET - FULL



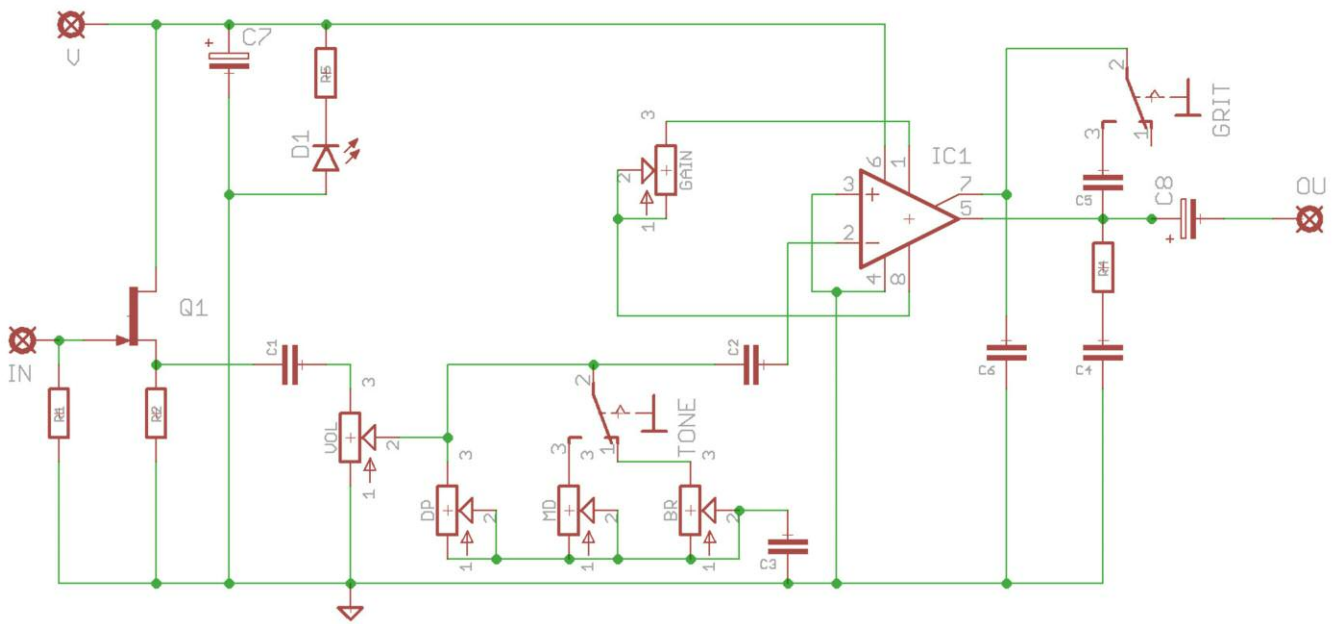
BOM

R1	1M	C1	47n	Q1	**
R2	3K9	C2	100n	IC1	LM386
R4	10R	C3	100n	VOL	10KB
R5	CLR*	C4	47n	GAIN	1KB
		C5	100n	DP	100K Trim
GRIT	SPDT ON-ON	C6	100n	MD	470K Trim
TONE	SPDT ON-OFF-ON	C7	100u elec	BR	470K Trim
		C8	100u elec		

*Optional current limiting resistor for LED.

**Your choice of FET - 2N5457, MPF102, J201 etc.

NOISY CRICKET - FIXED TONE



BOM

R1	1M	C1	47n	Q1	**
R2	3K9	C2	100n	IC1	LM386
R4	10R	C3	100n	VOL	10KB
R5	CLR*	C4	47n	GAIN	1KB
GRIT	SPDT ON-ON	C5	100n	DP	100K Trim
		C6	100n		
		C7	100u elec		
		C8	100u elec		

*Optional current limiting resistor for LED.

**Your choice of FET - 2N5457, MPF102, J201 etc.

SETTING THE TONE....

If you've gone for a fixed tone option, setting this is just a case of adjusting your DP trimmer until you get the tone you want. Done.

To set your three-way tone switch there's a little more work to do.

With your TONE switch in the middle (OFF) position, adjust your DP trimmer to get your brightest setting. Any further adjustments of this trimmer will directly affect your MIDDLE and DEEP settings.

With the switch in the UP position, adjust your MD trimmer to get your middle tone setting.

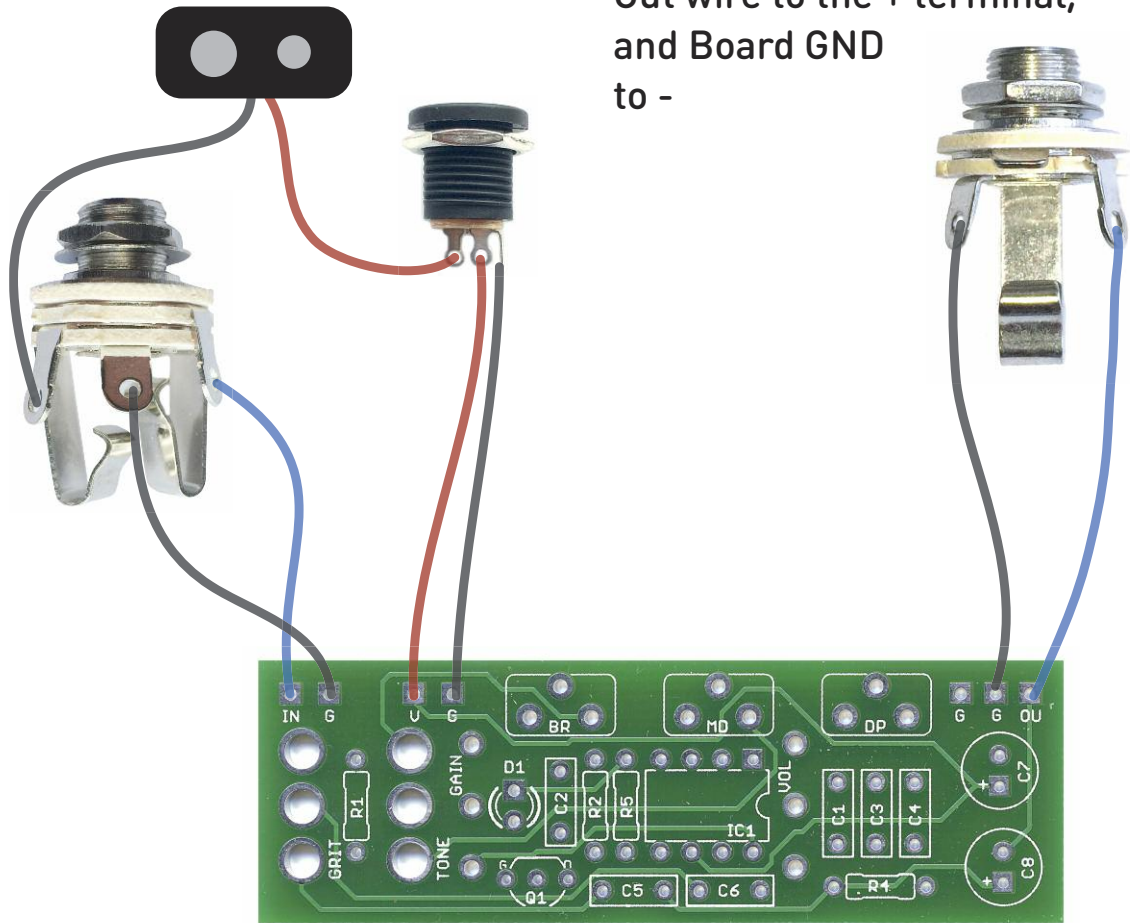
With the switch in the DOWN position, adjust the BR trimmer to get your deepest setting.

The trimmers have been positioned for easy access once your kit is boxed up, so making adjustments to the finished kit is simple.

If you prefer you can make things simpler by having just a two-way tone setting. use a SPDT ON-ON switch and only use one or other of the MD or BR trimmers.

Wire it up

If you're connecting directly to a speaker rather than an output jack, simply connect the Board Out wire to the + terminal, and Board GND to -



The Board GND connections don't all have to directly attach to the board. You can run a couple of wires from the DC connector, one to the board, another to the IN jack, then daisy chain that over to the OUT jack.

It doesn't matter how they all connect, as long as they do.

This circuit is standard, Negative GND. Your power supply should be Tip Negative / Sleeve Positive. That's the same as your standard pedals (Boss etc), and you can safely daisy-chain your supply to this pedal. Now... CRANK THAT MOFO!

PedalParts.co.uk