

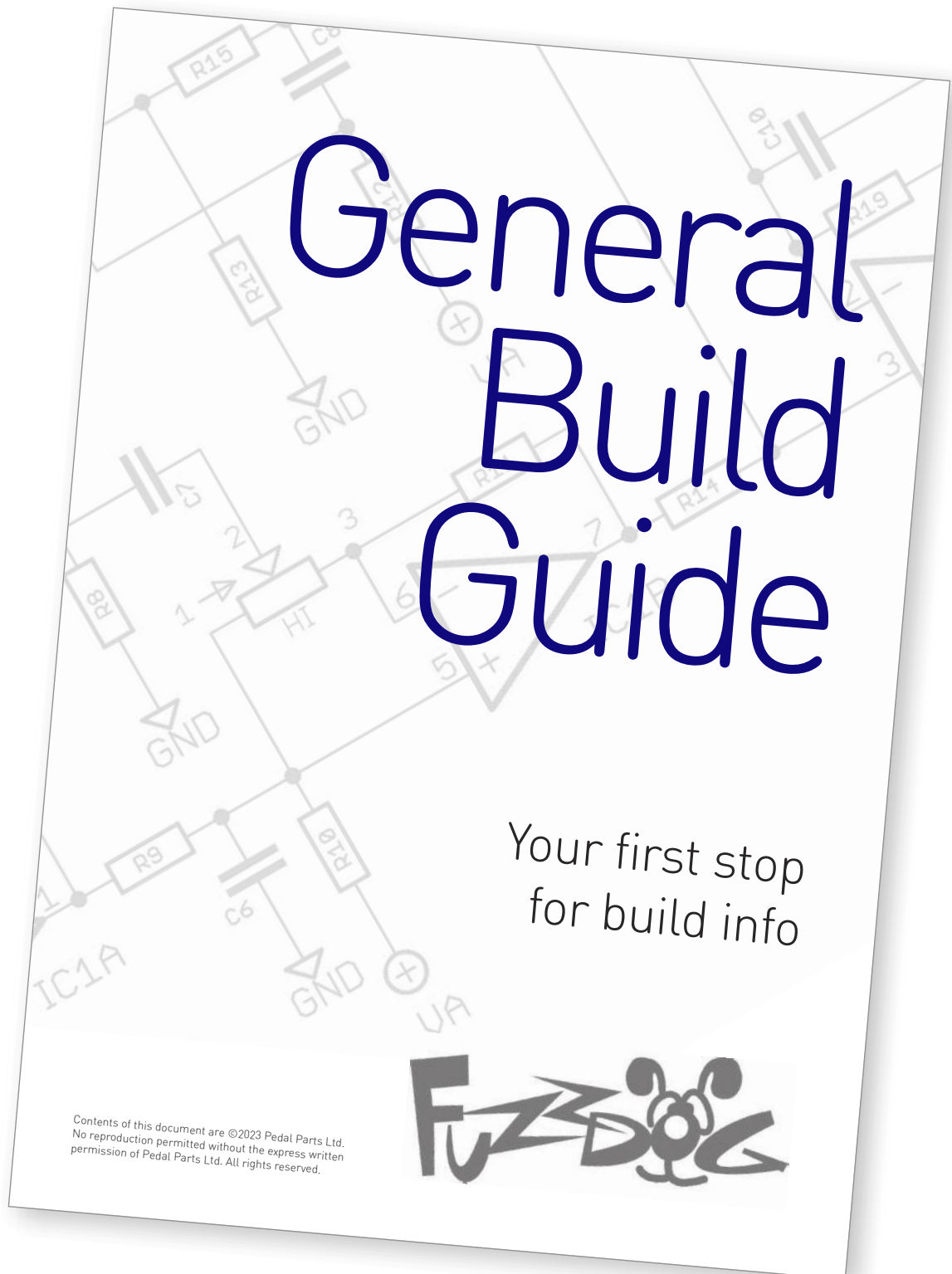
Punch In The Face

Tim Escobedo's uncompromisingly
raucous Fuzz Face-based beast

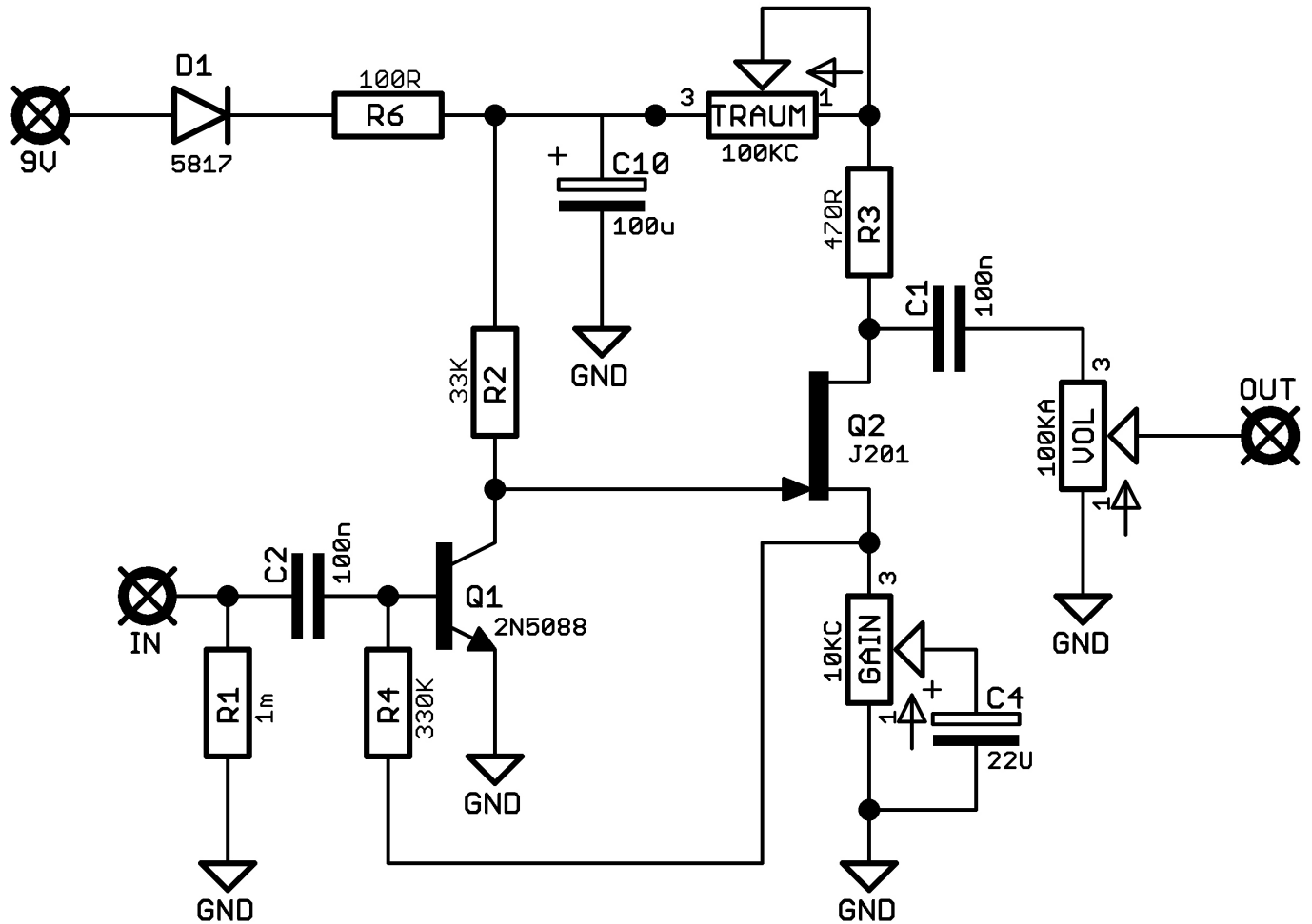


Before you dig in, ensure you download and read the **General Build Guide**.

It contains all the information you need for a successful outcome.

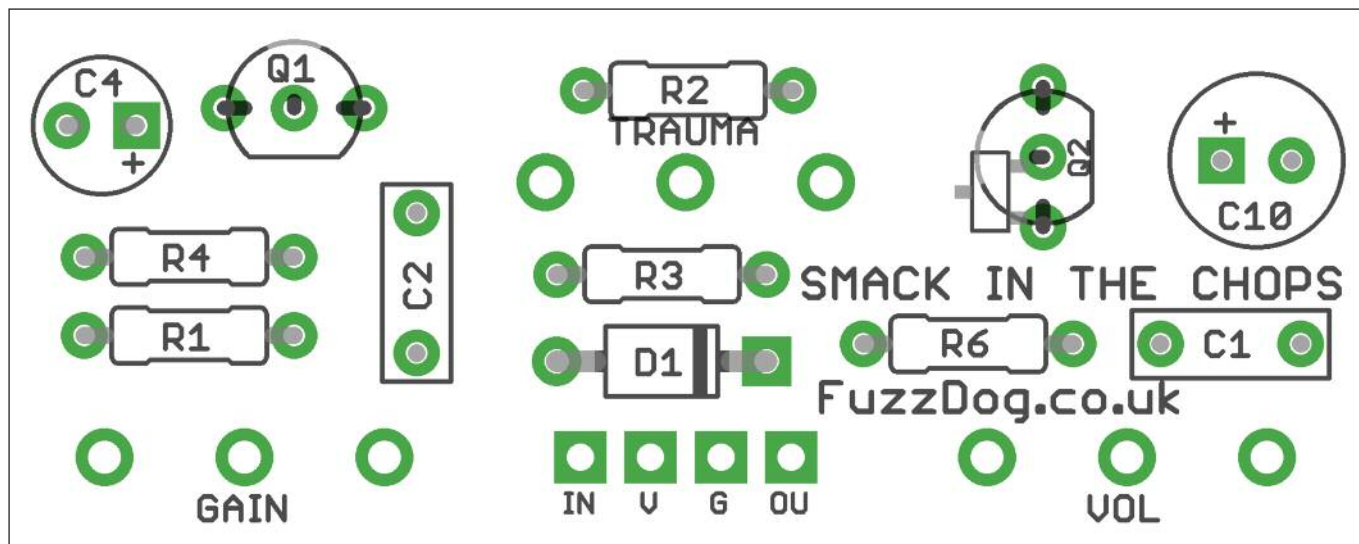


Schematic + BOM



R1	1M	C1	100n	D1	1N5817
R2	33K	C2	100n	Q1	2N5088
R3	470R	C4	22u elec	Q2	J201 / MMBFJ201
R4	330K				
R6	100R				
				GAIN	10KC
				TRAUM	100KC*
				VOL	100KA

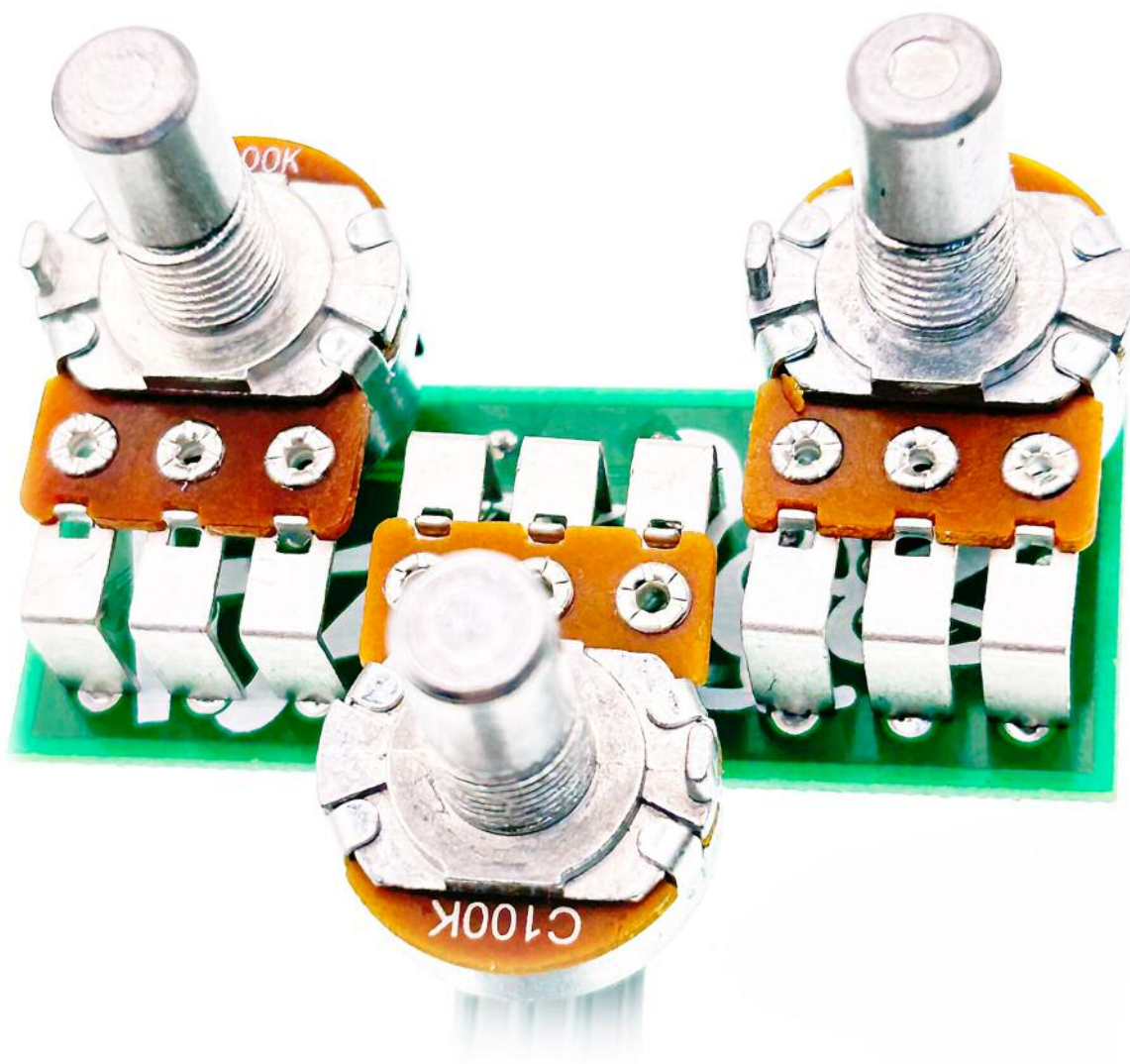
*Originally linear, but
reverse log is much better.



Snap the small metal tag off the pots so they can be mounted flush in the box.

You should solder all other board-mounted components before you solder the pots.

Once they're in place you'll have no access to much of the board.



Drilling template

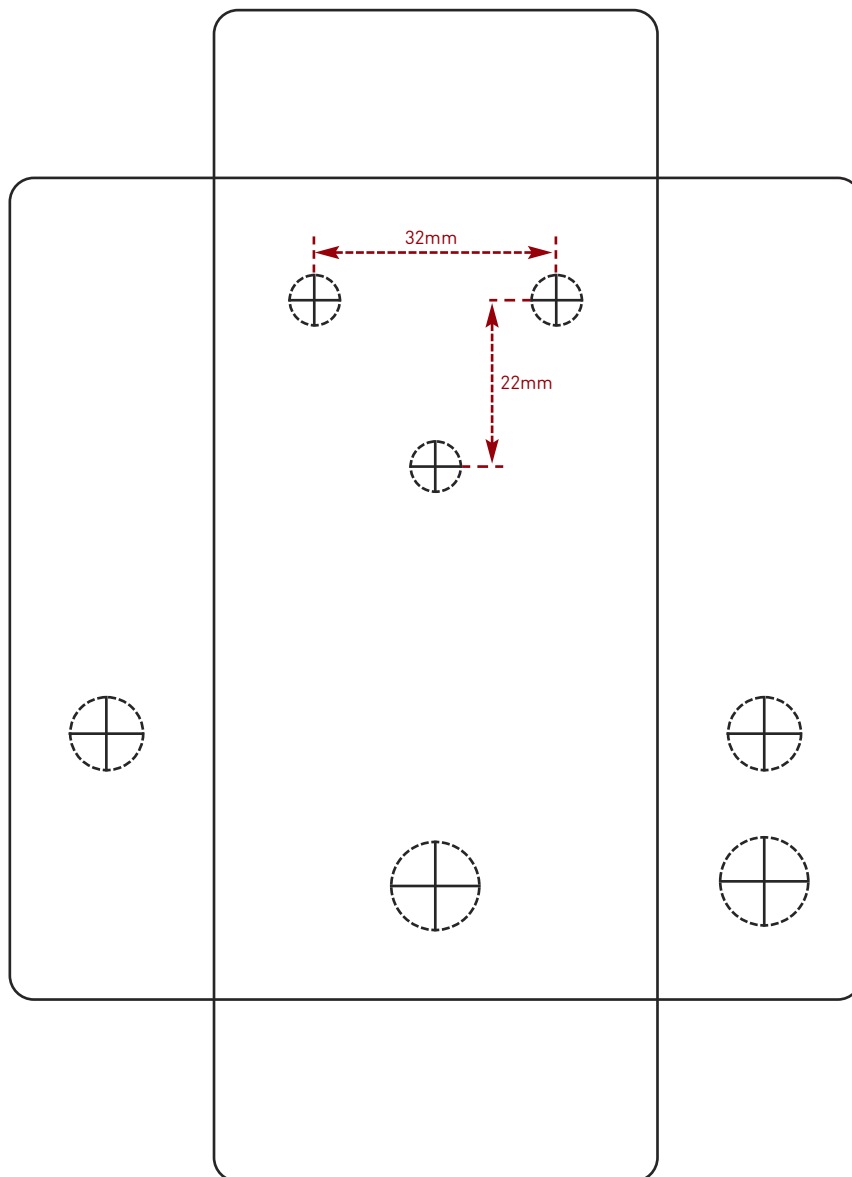
Hammond 1590B - 60 x 111 x 31mm

Drill sizes listed are minimum.

It's a good idea to add 1mm to anything mounted on the PCB that'll poke through the front of the enclosure.

Drill sizes:

Pots	7mm
Jacks	10mm
Footswitch	12mm
DC Socket	12mm



This template is a rough guide only. You should ensure correct marking of your enclosure before drilling. You use this template at your own risk.

Pedal Parts Ltd can accept no responsibility for incorrect drilling of enclosures.

FuzzDog.co.uk