

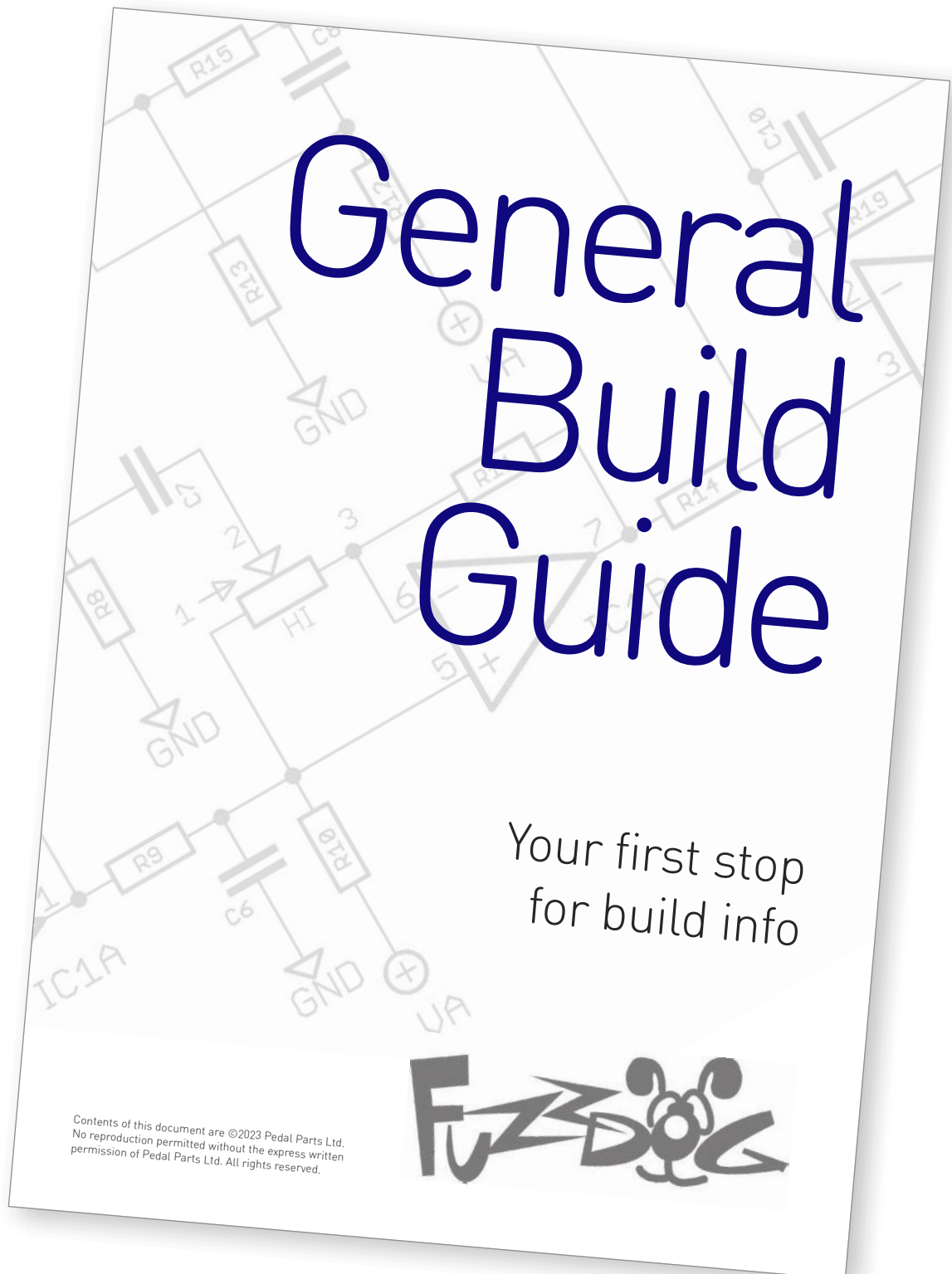
Projectile

Boutique Tube Screamer-based
box fronted by a Boner Boost

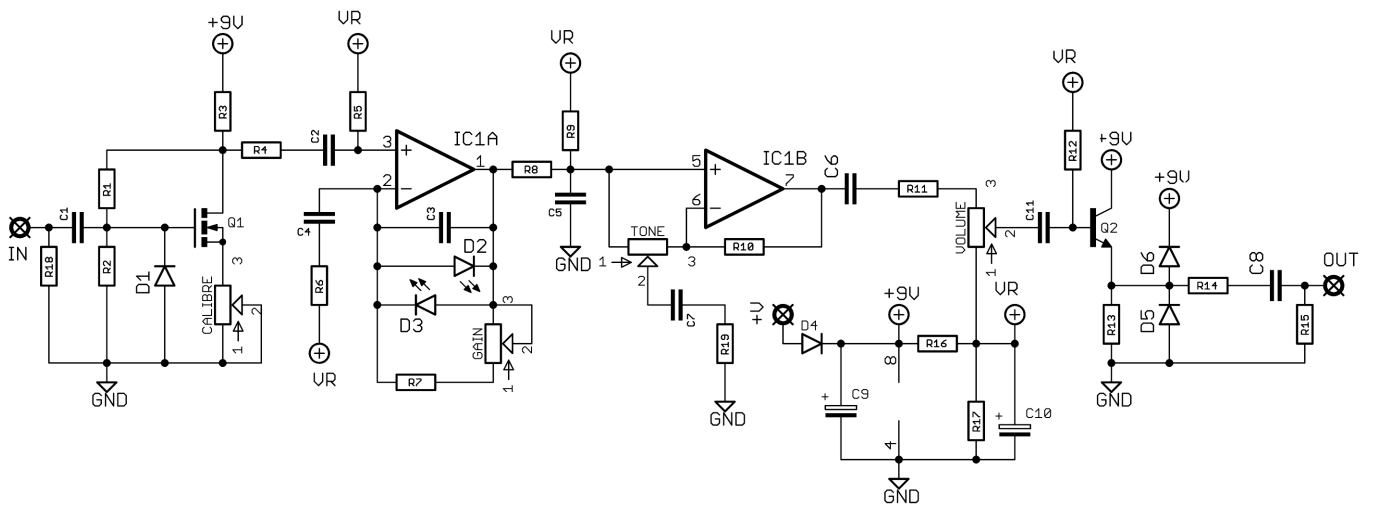


Before you dig in, ensure you download and read the **General Build Guide**.

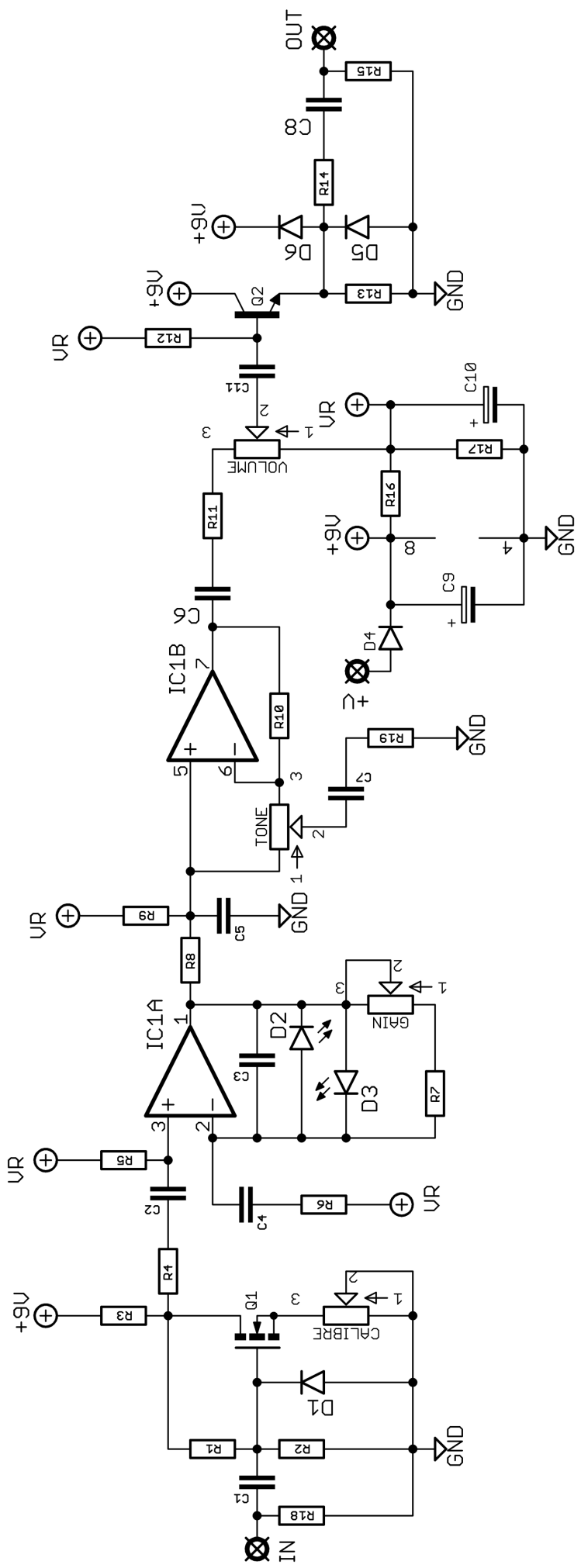
It contains all the information you need for a successful outcome.

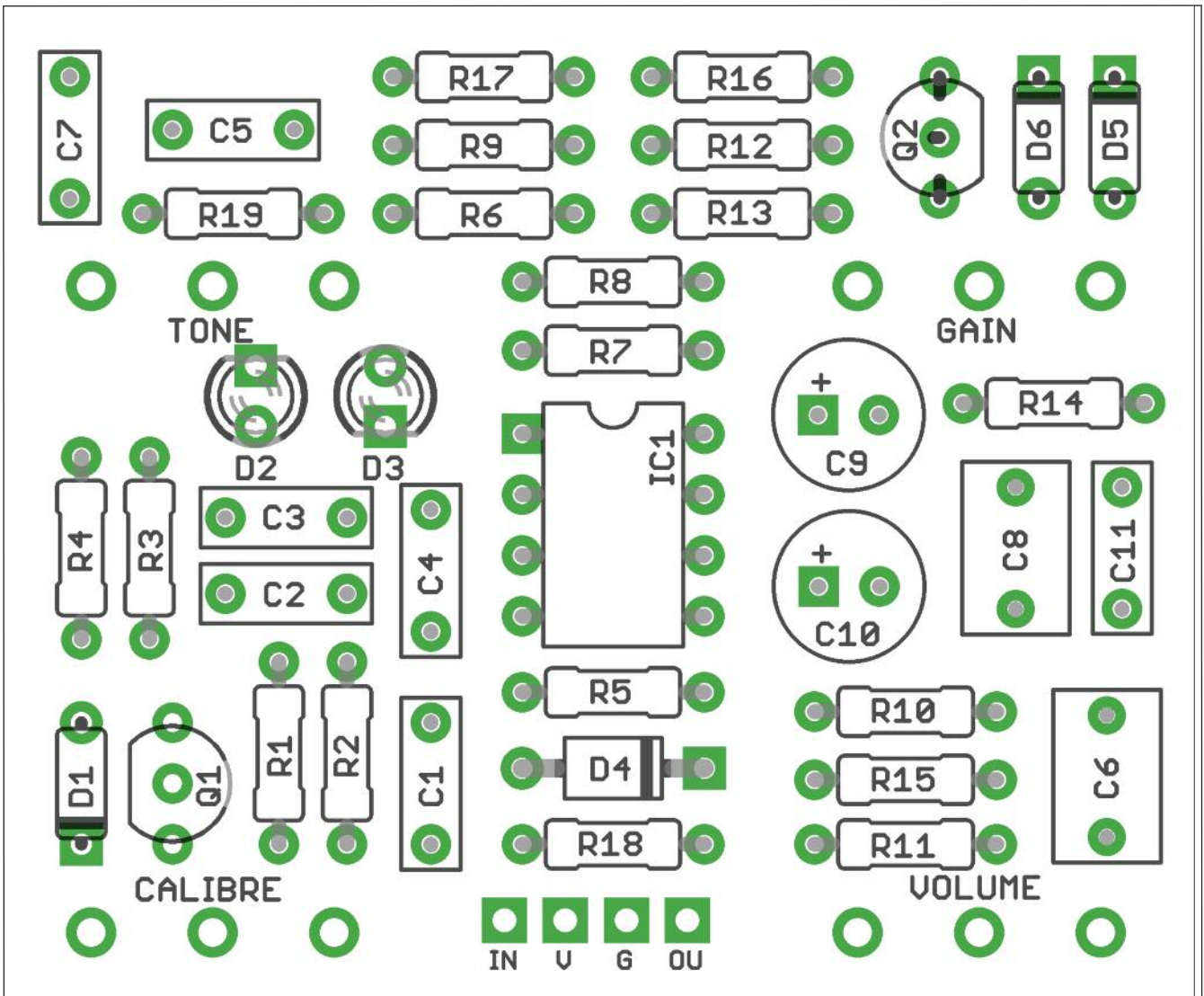


Schematic + BOM



R1	10M	C1	100n	D1	9V1 Zener
R2	10M	C2	100n	D2-3	3mm Blue LED
R3	5K1	C3	47p	D4	1N5817
R4	10K	C4	100n	D5-6	1N4148
R5	100K	C5	220n	Q1	BS170
R6	4K7	C6	1u	Q2	2n3904
R7	43K	C7	220n	IC1	OPA2134
R8	820R	C8	1u	VOL	100KA
R9	10K	C9	100u elec	CALI	5KC
R10	1K	C10	47u elec	GAIN	1MA
R11	1K	C11	100n	TONE	20KW
R12	510K				
R13	10K				
R14	1K				
R15	51K				
R16	10K				
R17	10K				
R18	1M				
R19	100R				

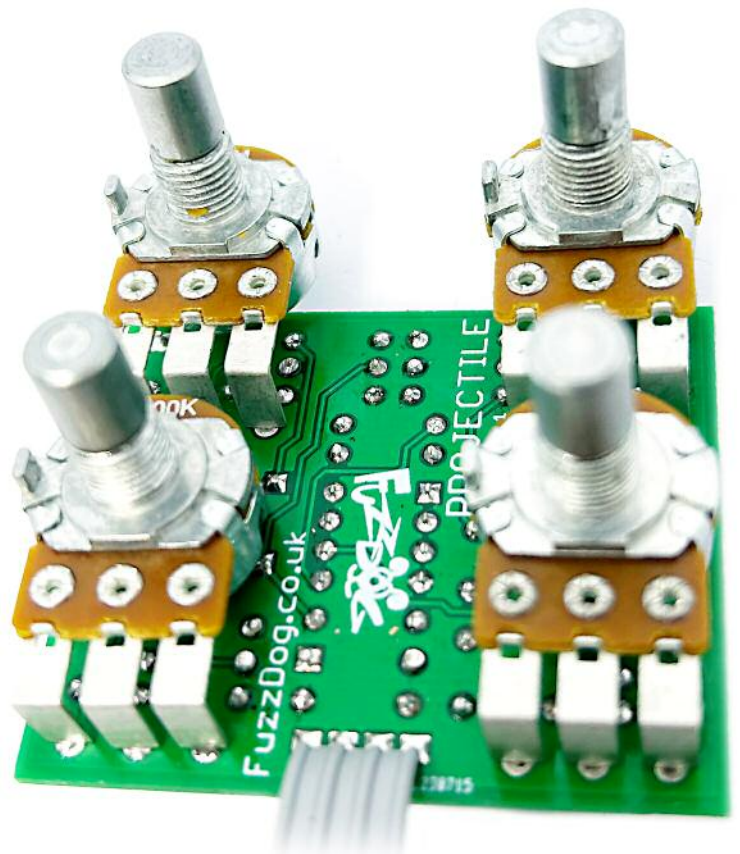




Snap the small metal tag off the pots so they can be mounted flush in the box.

You should solder all other board-mounted components before you solder the pots.

Once they're in place you'll have no access to much of the board.



Drilling template

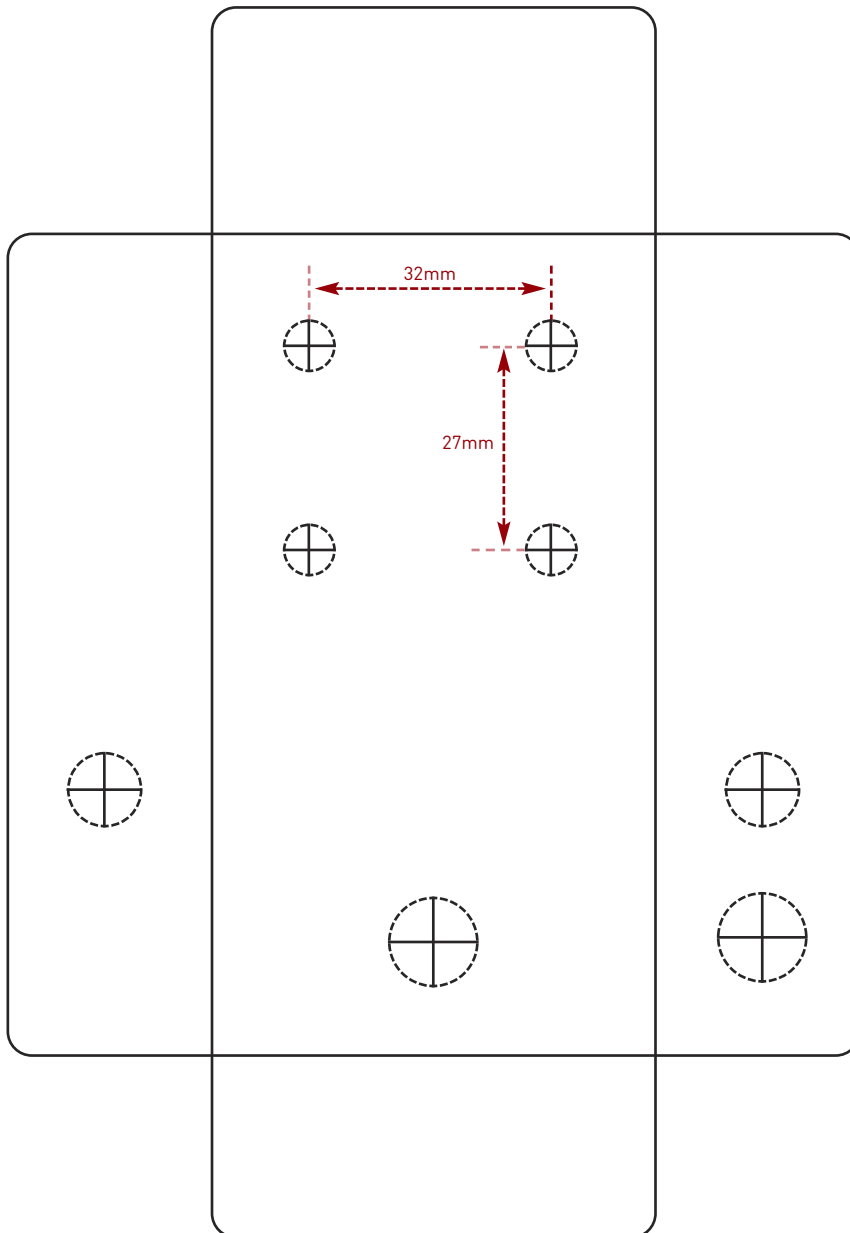
Hammond 1590B - 60 x 111 x 31mm

Drill sizes listed are minimum.

It's a good idea to add 1mm to anything mounted on the PCB that'll poke through the front of the enclosure.

Drill sizes:

Pots	7mm
Jacks	10mm
Footswitch	12mm
DC Socket	12mm
Toggle switches	6mm
Rotary switches	10mm



This template is a rough guide only. You should ensure correct marking of your enclosure before drilling. You use this template at your own risk.

Pedal Parts Ltd can accept no responsibility for incorrect drilling of enclosures.

FuzzDog.co.uk