

# Plexi Beast

Skreddy-designed box  
of Marshall Plexi

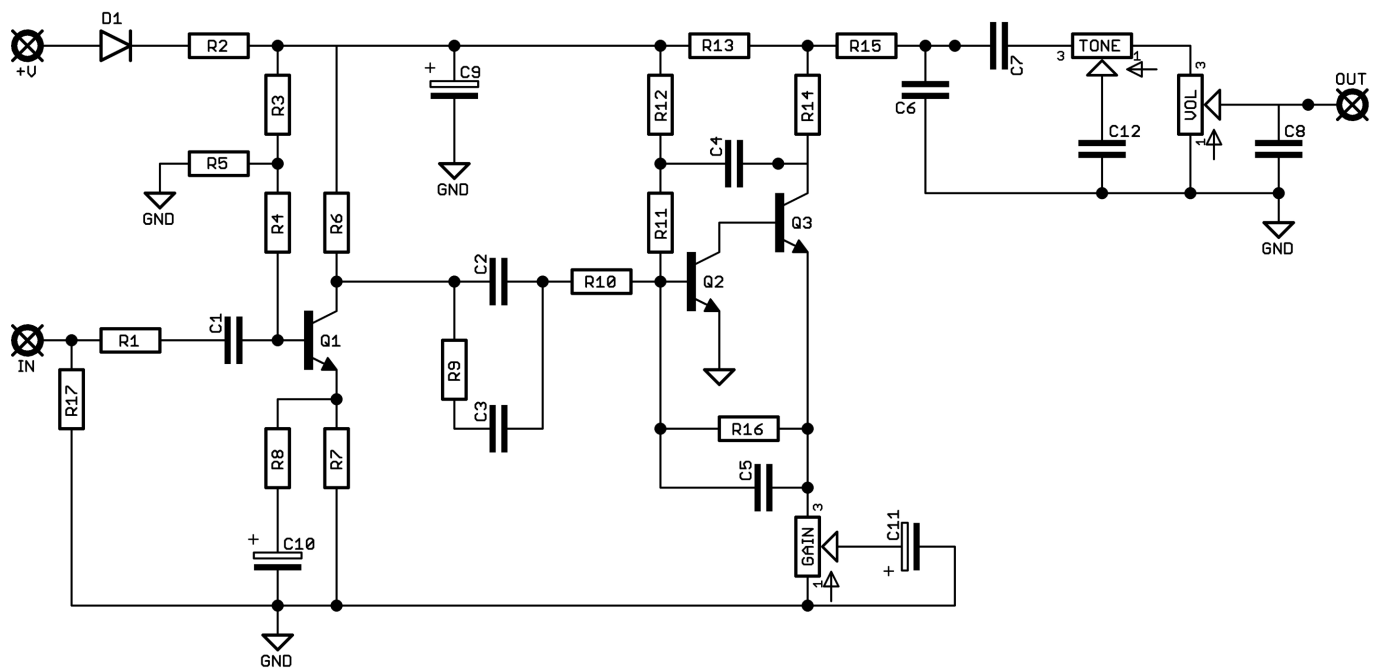


Before you dig in, ensure you download and read the **General Build Guide**.

It contains all the information you need for a successful outcome.



# Schematic + BOM



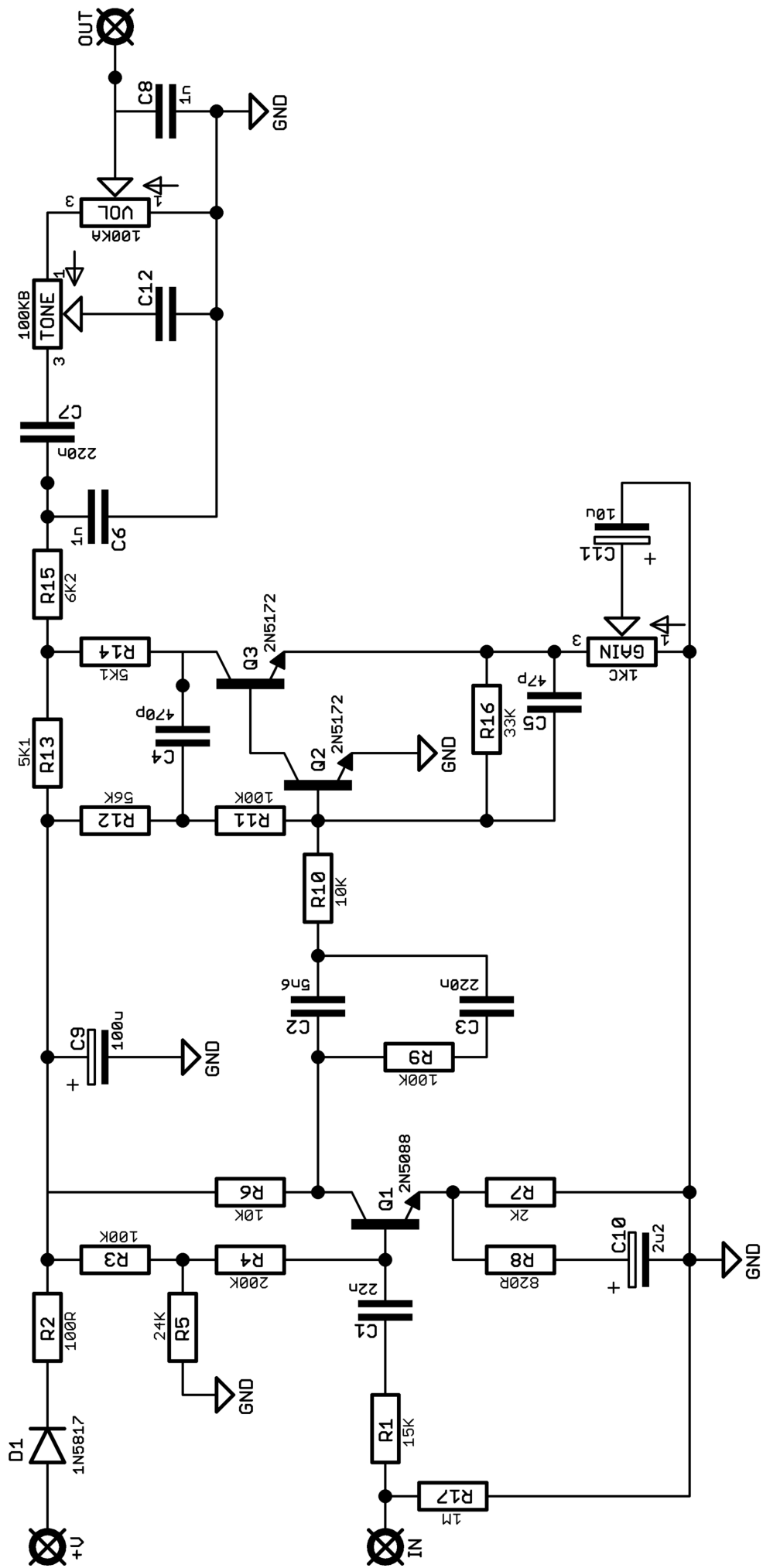
R1 15K  
R2 100R  
R3 100K  
R4 200K  
R5 24K  
R6 10K  
R7 2K  
R8 820R  
R9 100K  
R10 10K  
R11 100K  
R12 56K  
R13 5K1  
R14 5K1  
R15 6K2  
R16 33K  
R17 1M

C1 22n  
C2 5n6  
C3 220n  
C4 470p  
C5 47p  
C6 1n  
C7 220n  
C8 1n  
C9 100u elec  
C10 2u2 elec  
C11 10u elec  
C12 3n3

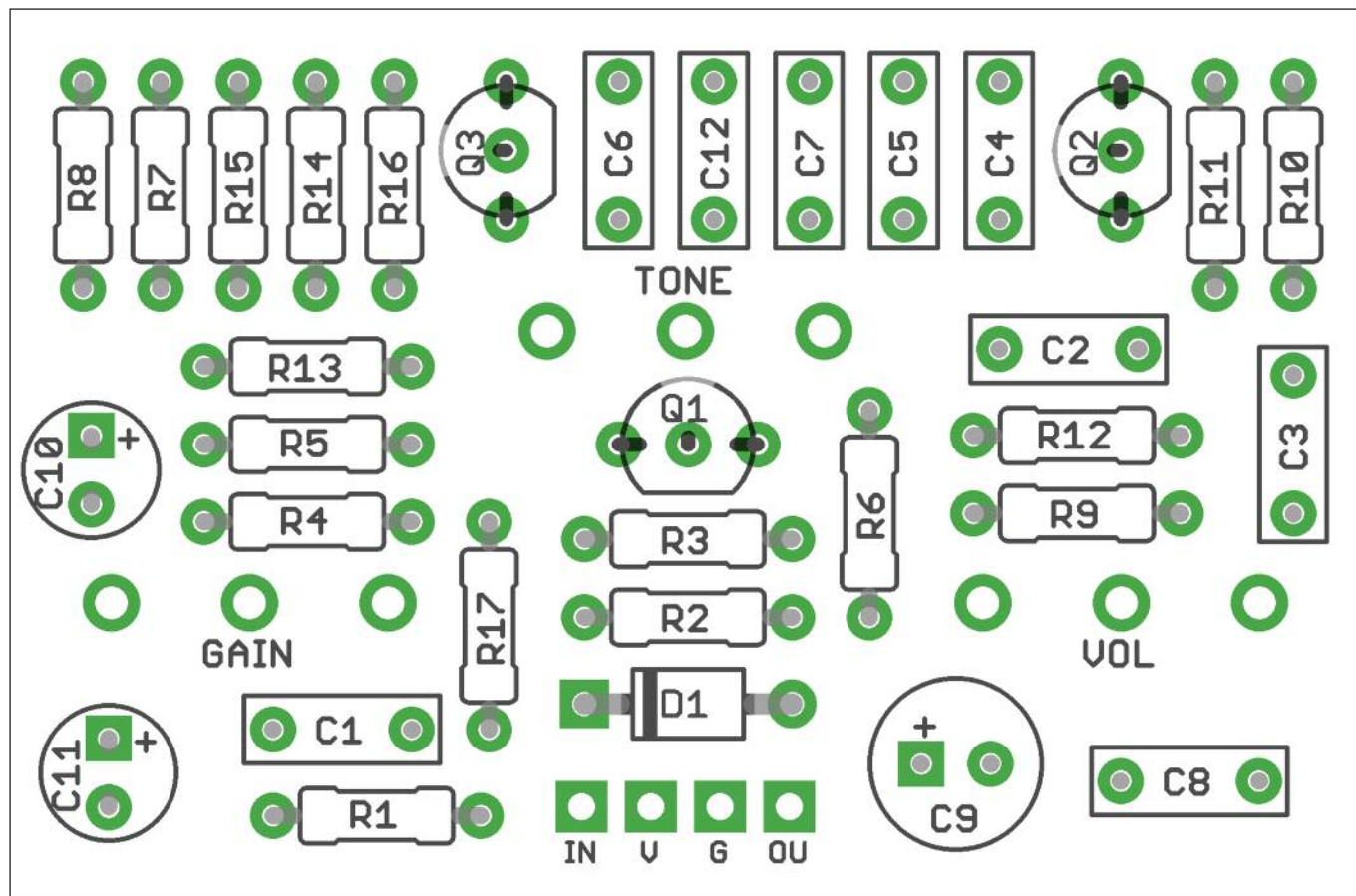
D1 1N5817  
Q1 2N5088  
Q2 2N5172  
Q3 2N5172  
GAIN 1KC  
TONE 100KB  
VOL 100KA

There are a few funky resistor values in there. Though we supply the correct ones with kits, the world won't implode if you substitute something near-as.

2N5172 aren't in stock in many places. If you're going to substitute for something else watch the pinout. They are ECB, so you'll have to do some leg twisting if using standard EBC. Sorry, we've not tried any so can't advise on subs.



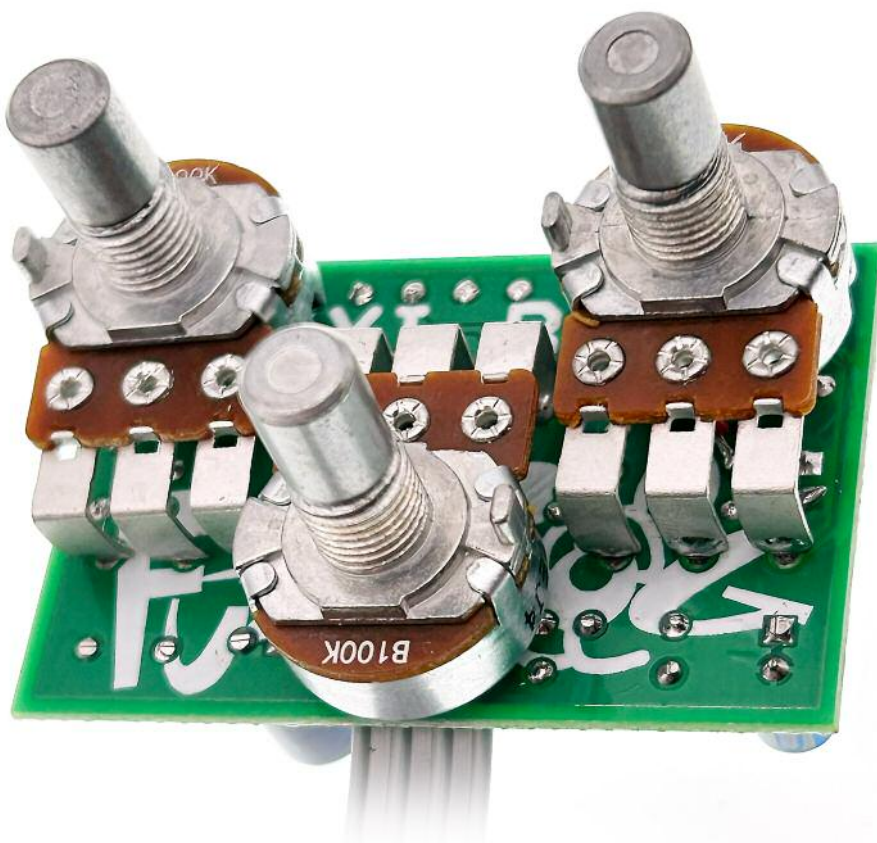




Snap the small metal tags off the pots so they can be mounted flush in the box.

You should solder all other board-mounted components before you solder the pots.

Once they're in place you'll have no access to much of the board.



# Drilling template

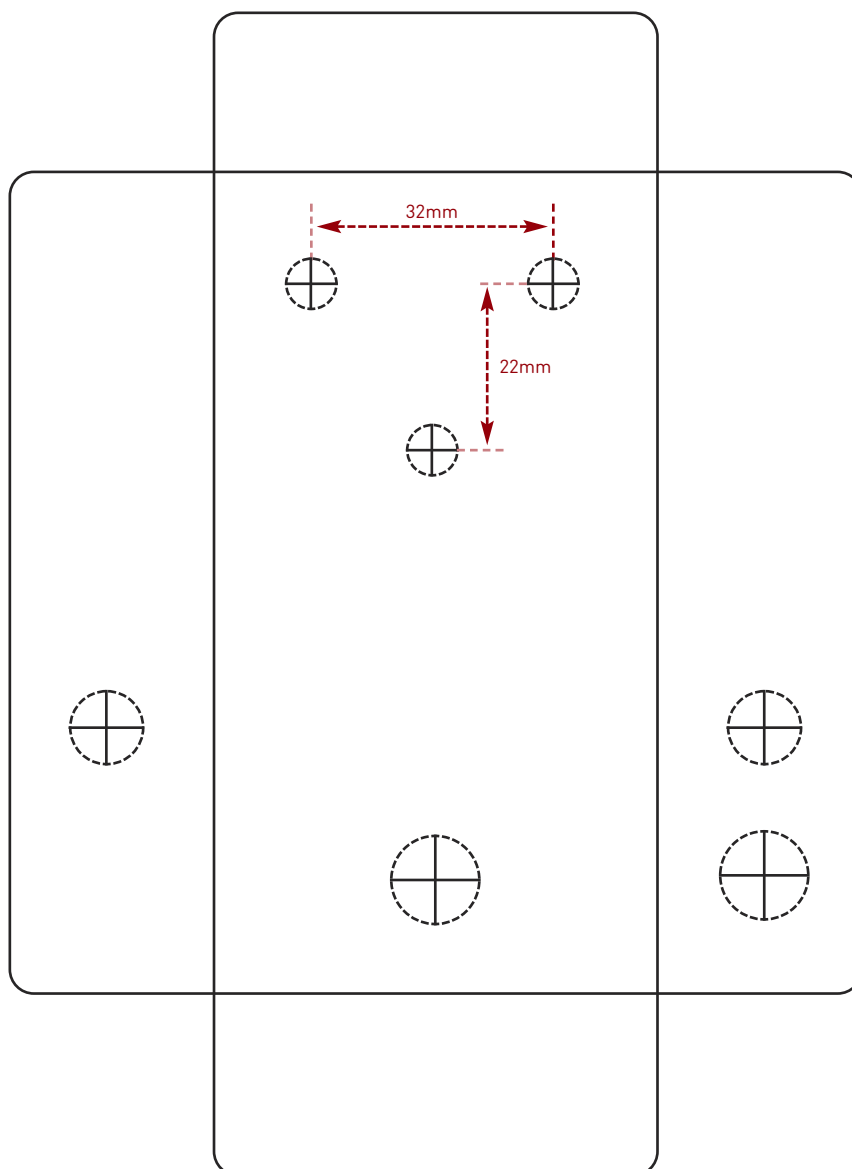
**Hammond 1590B - 60 x 111 x 31mm**

Drill sizes listed are minimum.

It's a good idea to add 1mm to anything mounted on the PCB that'll poke through the front of the enclosure.

Drill sizes:

Pots	7mm
Jacks	10mm
Footswitch	12mm
DC Socket	12mm
Toggle switches	6mm
Rotary switches	10mm



This template is a rough guide only. You should ensure correct marking of your enclosure before drilling. You use this template at your own risk.

Pedal Parts Ltd can accept no responsibility for incorrect drilling of enclosures.

FuzzDog.co.uk