

Overstellar Interdriver

Crazy box of crunchy breakup

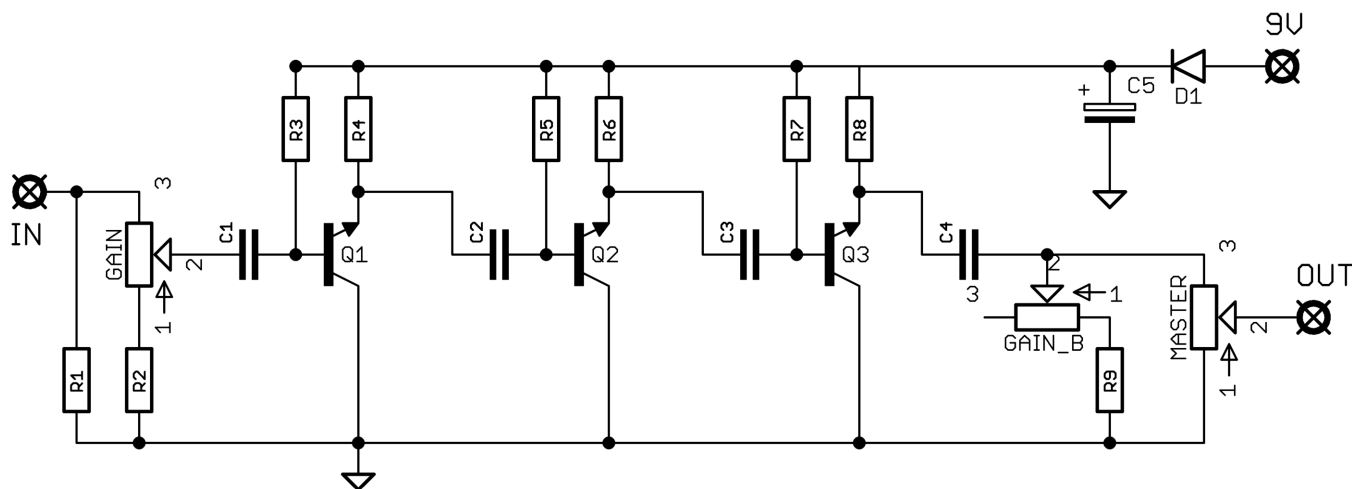


Before you dig in, ensure you download and read the **General Build Guide**.

It contains all the information you need for a successful outcome.

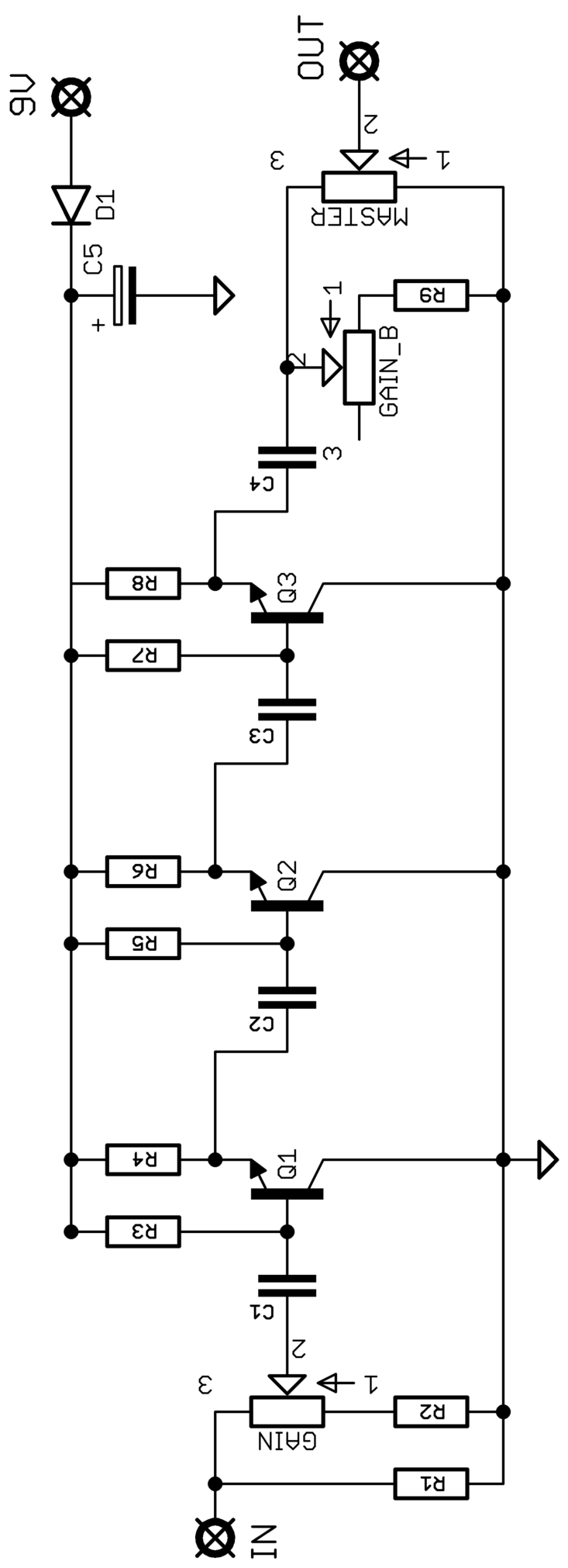


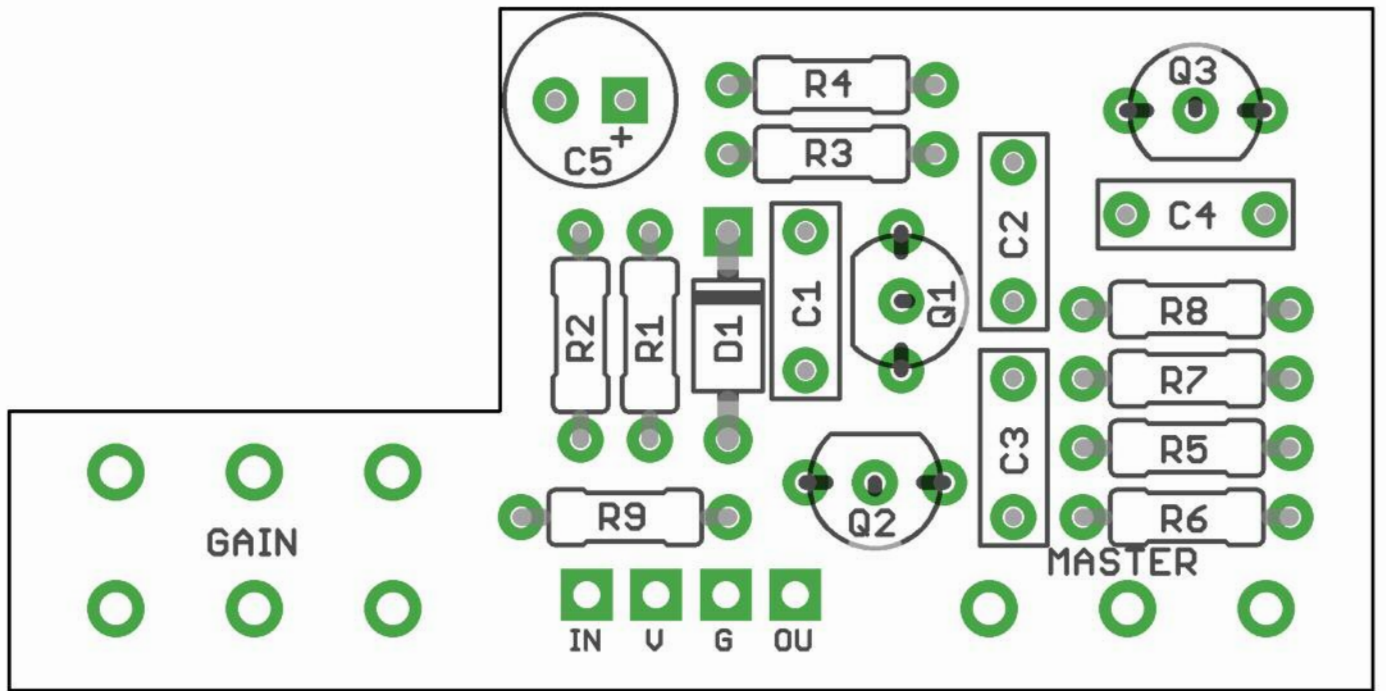
Schematic + BOM



R1	1M	C1	100n	D1	1N5817
R2	10K	C2	10n	Q1-3	2N5089
R3	910K	C3	100n	GAIN	100KB DUAL GANG
R4	180K	C4	100n	VOL	100KA
R5	910K	C5	100u elec		
R6	180K				
R7	910K				
R8	180K				
R9	3K3				

Yes, the transistors are that way around by design.

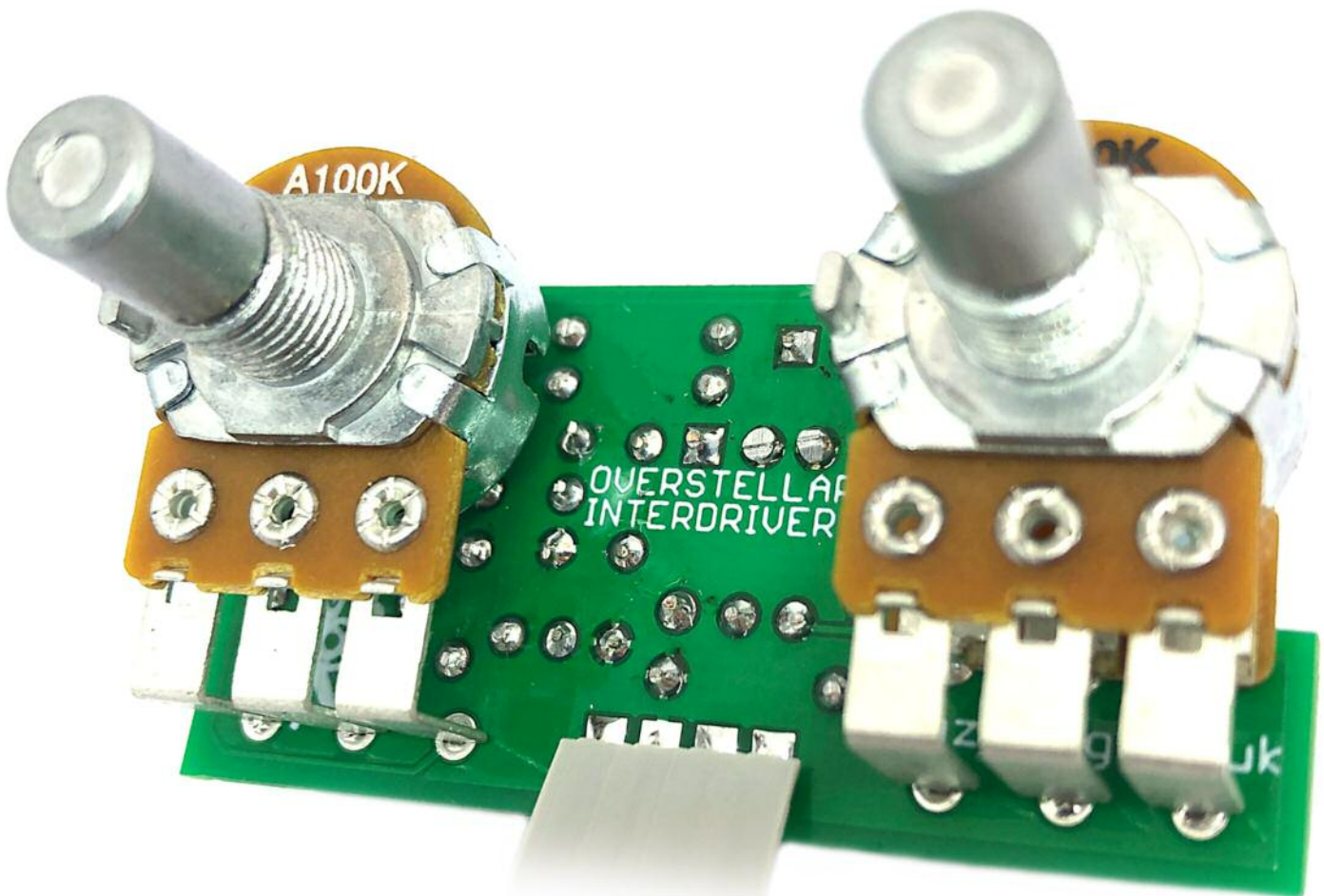




Snap the small metal tag off the pots so they can be mounted flush in the box.

You should solder all other board-mounted components before you solder the pots.

Once they're in place you'll have no access to much of the board.



Drilling template

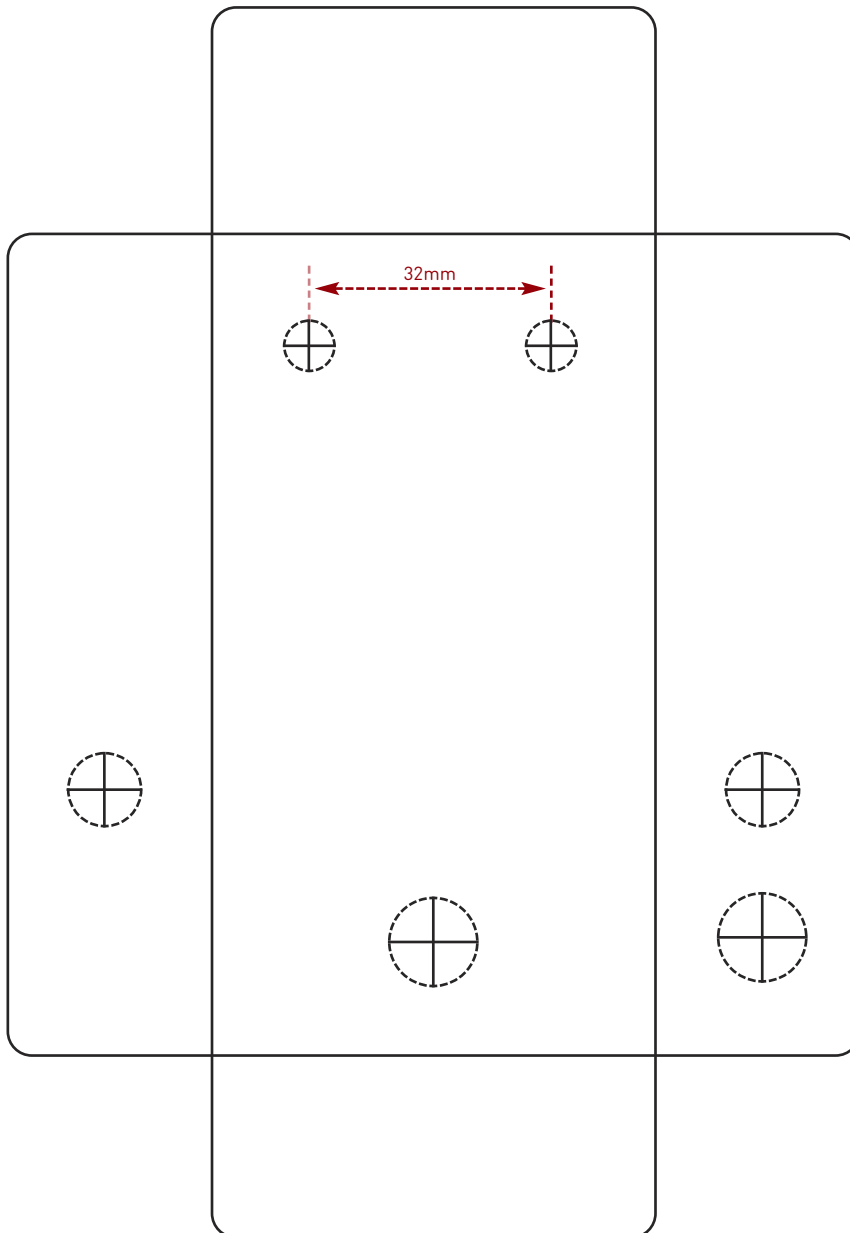
Hammond 1590B - 60 x 111 x 31mm

Drill sizes listed are minimum.

It's a good idea to add 1mm to anything mounted on the PCB that'll poke through the front of the enclosure.

Drill sizes:

Pots	7mm
Jacks	10mm
Footswitch	12mm
DC Socket	12mm
Toggle switches	6mm
Rotary switches	10mm



This template is a rough guide only. You should ensure correct marking of your enclosure before drilling. You use this template at your own risk.

Pedal Parts Ltd can accept no responsibility for incorrect drilling of enclosures.

FuzzDog.co.uk