

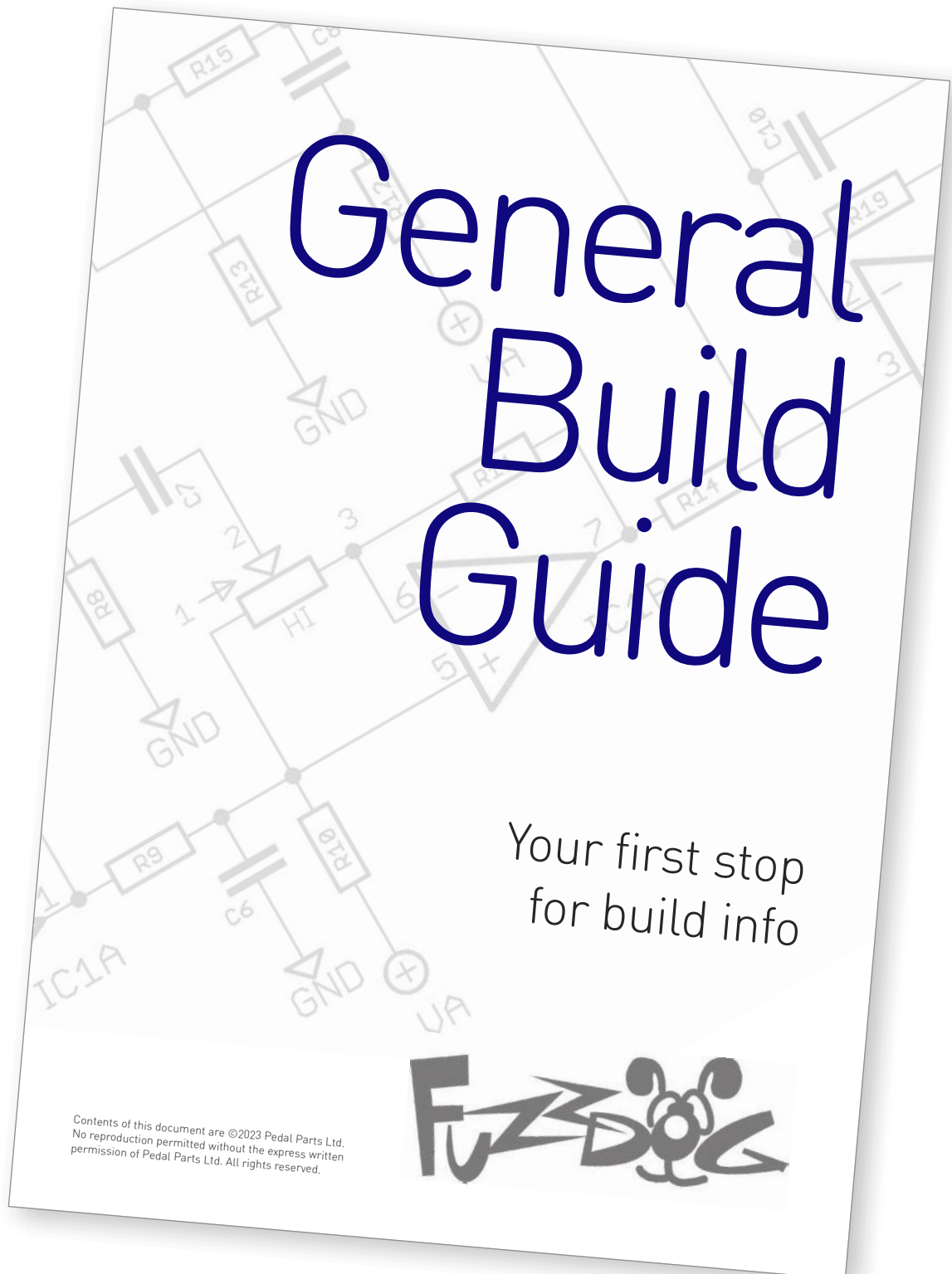
One-Knob God

Filthy fuzz thrusting reptilian tentacles into your ears

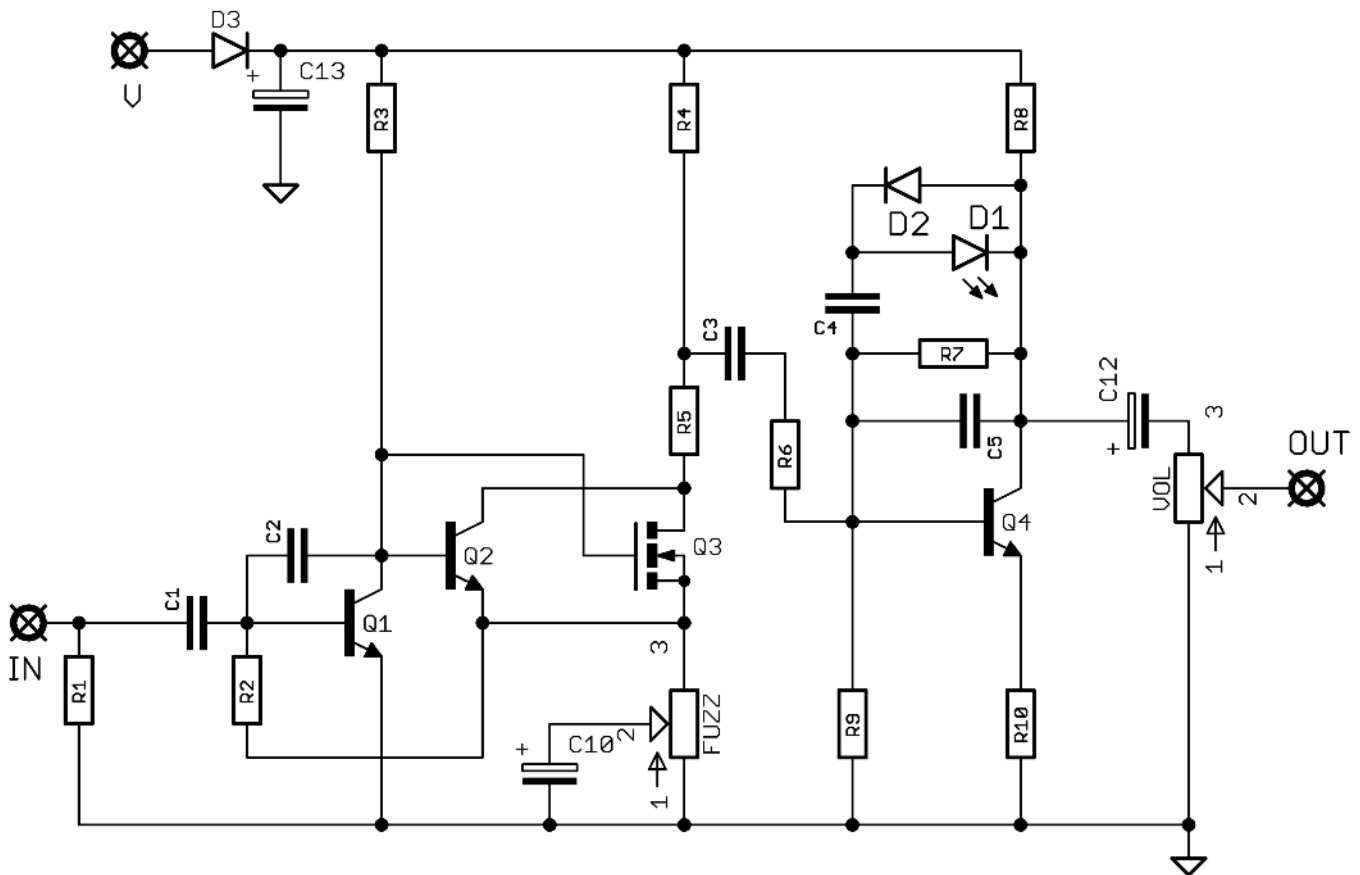


Before you dig in, ensure you download and read the **General Build Guide**.

It contains all the information you need for a successful outcome.



Schematic + BOM

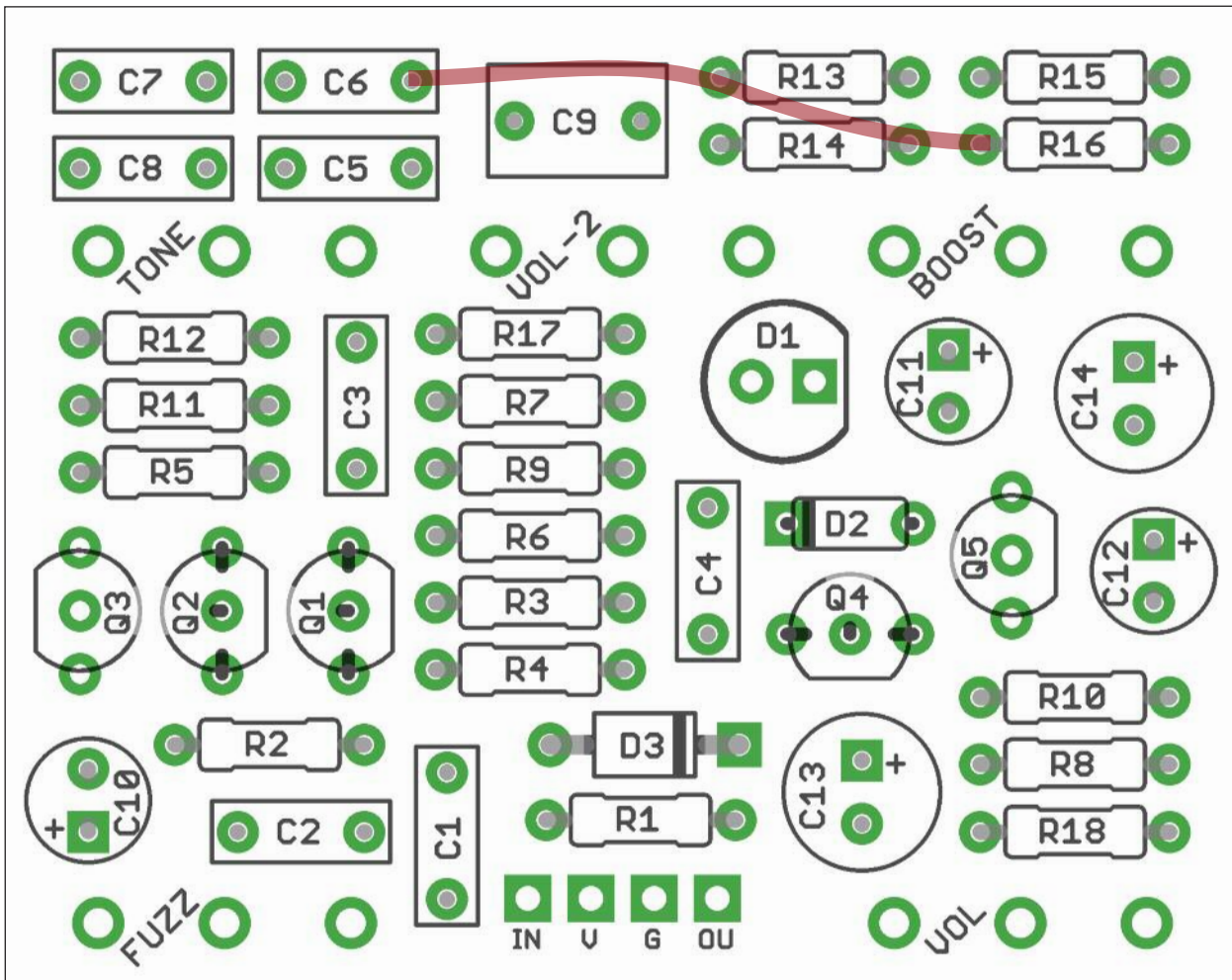


R1	1M	C1	33n	D1	3mm Red LED
R2	100K	C2	820p	D2	1N4148
R3	27K	C3	100n	D3	1N5817
R4	820R	C4	100n	Q1	PN2222
R5	5K1	C5	470p	Q2	PN2222
R6	33K	C10	10u elec	Q3	BS170
R7	470K	C12	1u elec	Q4	2N5088
R8	15K	C13	100u elec	VOL-2	100KB
R9	100K			FUZZ	1K fixed resistor
R10	100R				

Feel free to play around with other BJT transistors in Q1, 2 and 4.

The 1K resistor for the Fuzz pot spots should be placed into the two outer pads.

If it isn't listed above, leave it empty. A jumper wire is required - see next page.



If using a ribbon cable you should solder it onto the component side of the PCB so it isn't interfering with the balance pot. Same goes for individual wires.

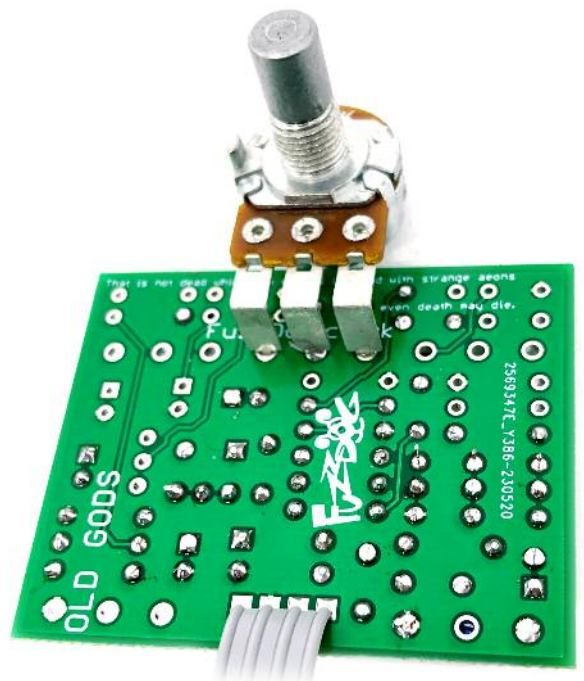
Snap the small metal tag off the pot so it can be mounted flush in the box.

You should solder all other board-mounted components before you solder the pot. Once they're in place you'll have no access to much of the board.

Any parts not listed in the BOM should be left empty.

JUMPER

Place a wire between the C6 and R16 pads as shown above.



Drilling template

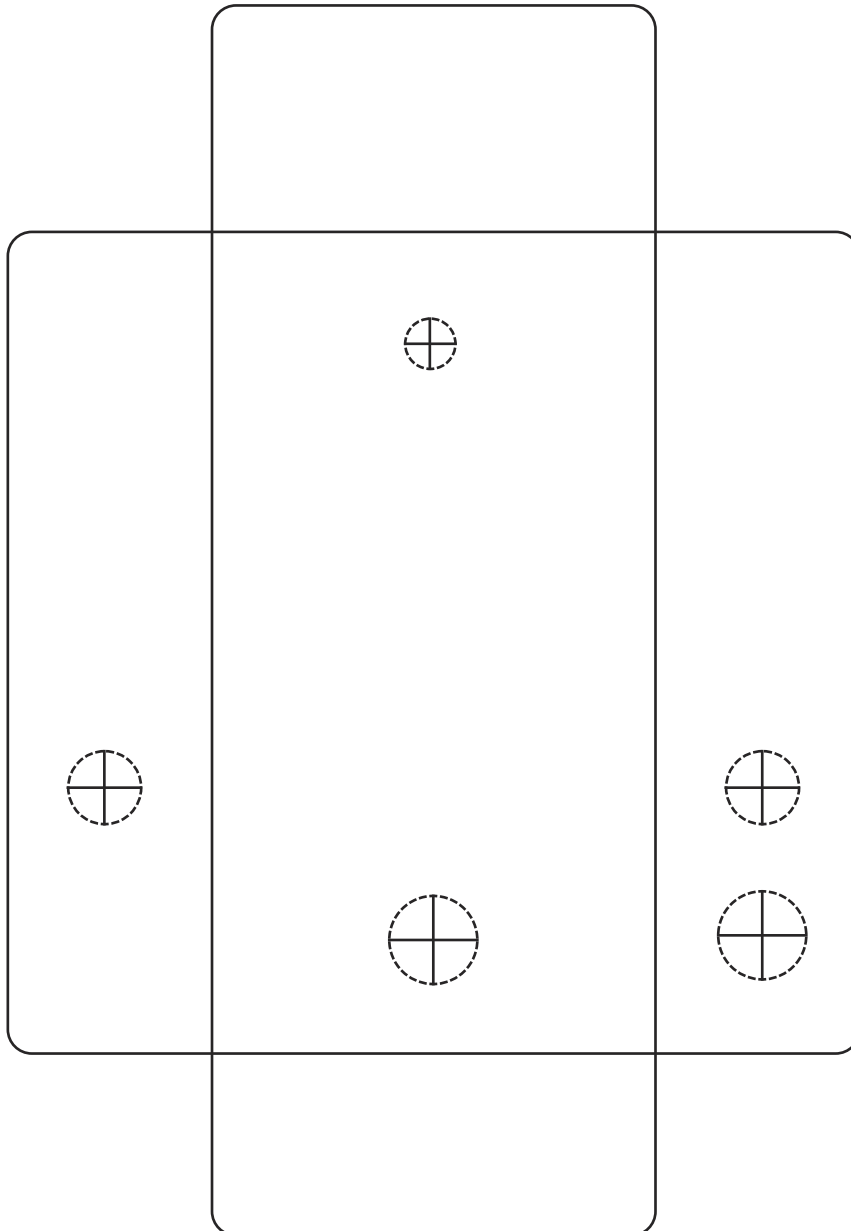
Hammond 1590B - 60 x 111 x 31mm

Drill sizes listed are minimum.

It's a good idea to add 1mm to anything mounted on the PCB that'll poke through the front of the enclosure.

Drill sizes:

Pots	7mm
Jacks	10mm
Footswitch	12mm
DC Socket	12mm
Toggle switches	6mm
Rotary switches	10mm



This template is a rough guide only. You should ensure correct marking of your enclosure before drilling. You use this template at your own risk.

Pedal Parts Ltd can accept no responsibility for incorrect drilling of enclosures.

FuzzDog.co.uk