

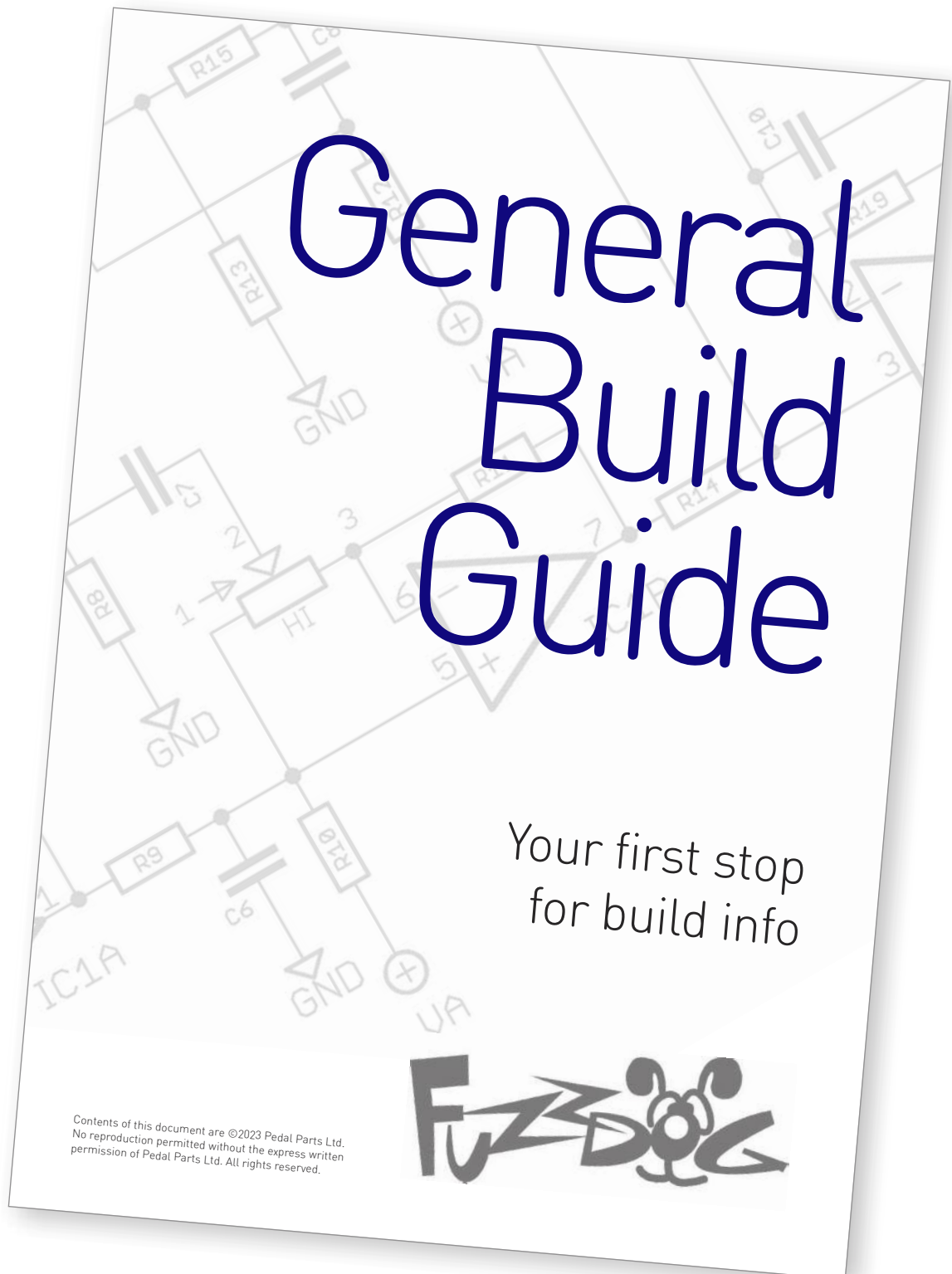
OD-1

Early Boss drive and a boutique take on it

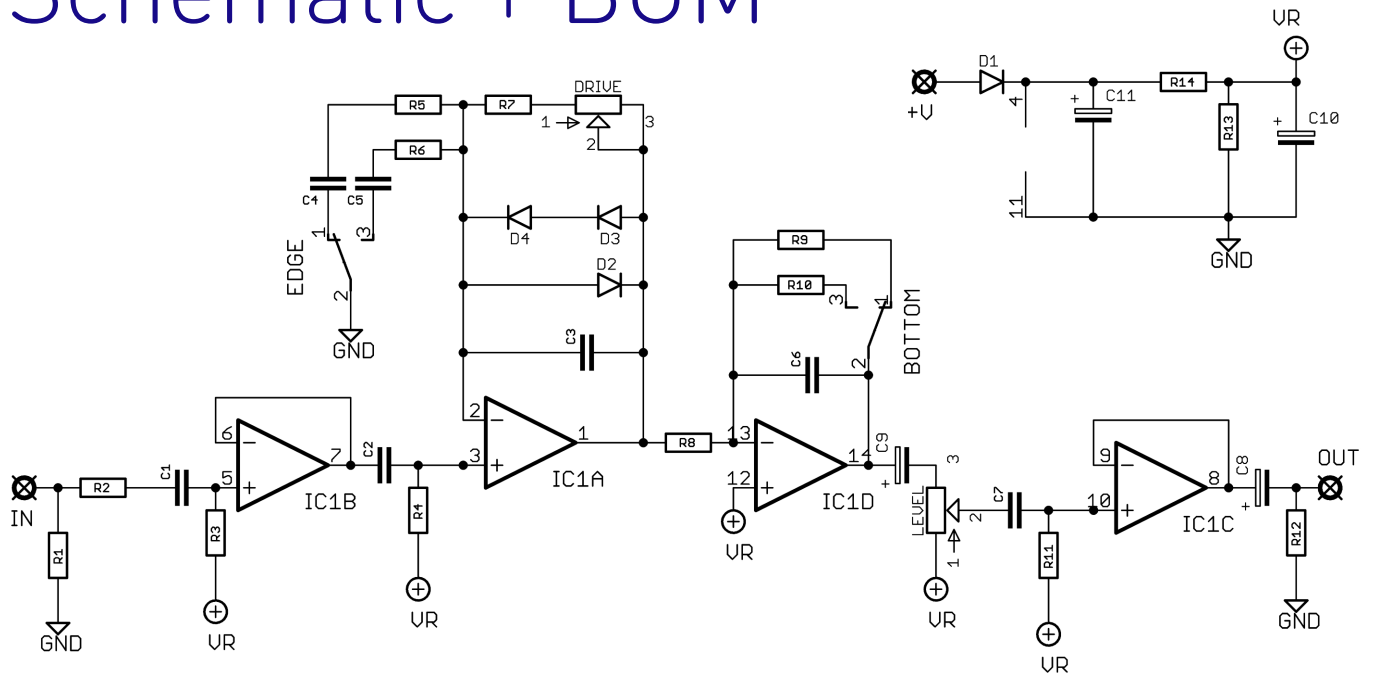


Before you dig in, ensure you download and read the **General Build Guide**.

It contains all the information you need for a successful outcome.



Schematic + BOM

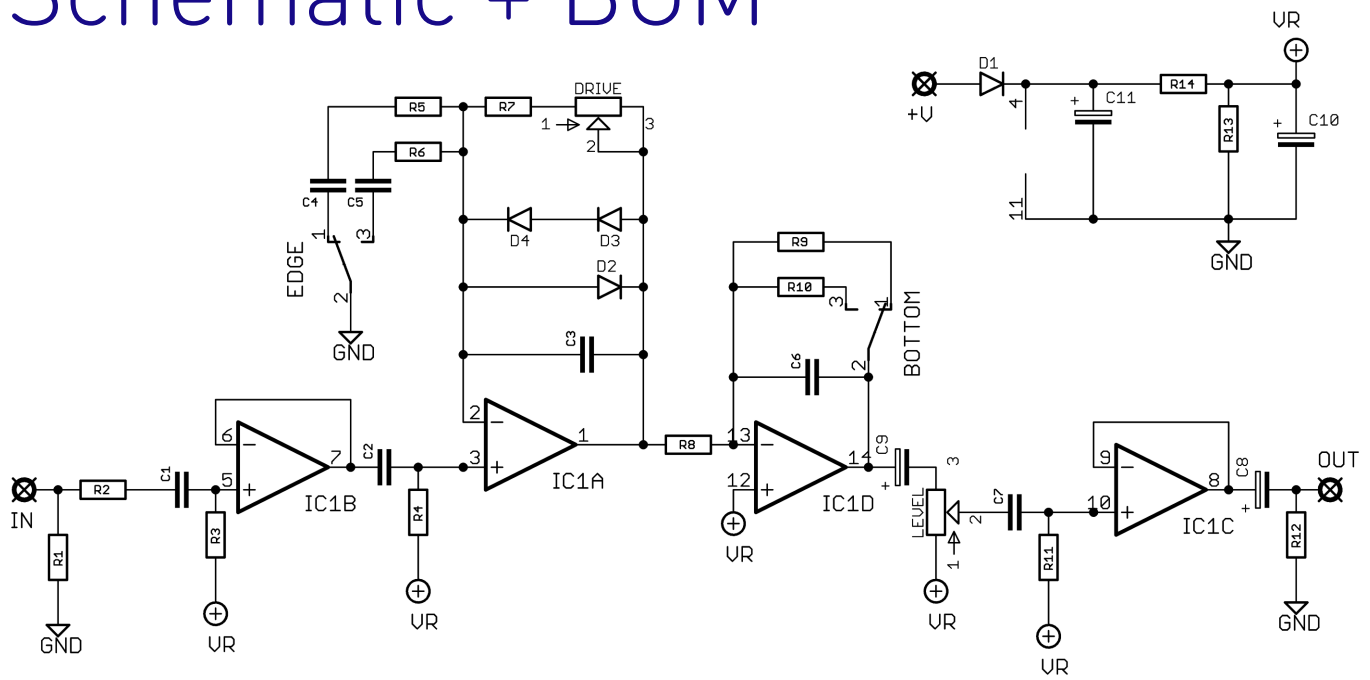


R1	1M	C1	100n	D1	1N5817
R2	1K	C2	100n	D2-4	1N4148*
R3	1M	C3	100p	IC1	LF444**
R4	10K	C4	47n	DRIVE	1MB
R5	4K7	C5	100n	LEVEL	10KB
R6	680R	C6	18n	EDGE	SPDT ON-ON
R7	3K3	C7	100n	BOTTOM	SPDT ON-ON
R8	10K	C8	10u elec		
R9	10K	C9	2u2 elec		
R10	33K	C10	10u elec		
R11	470K	C11	100u elec		
R12	100K				
R13	33K				
R14	33K				

*Original is 1S1588 but these are obsolete

**TL074 is a good replacement.

Schematic + BOM



R1	1M	C1	100n	D1	1N5817
R2	1K	C2	47n	D2-4	1N4148*
R3	220K	C3	100p	IC1	RC3404ADB**
R4	10K	C4	47n	DRIVE	1MA
R5	4K7	C5	Empty	LEVEL	10KB
R6	Empty	C6	18n	EDGE	Jumper***
R7	33K	C7	100n	BOTTOM	Jumper***
R8	10K	C8	10u elec		
R9	10K	C9	1u elec		
R10	Empty	C10	10u elec		
R11	470K	C11	100u elec		
R12	100K				
R13	33K				
R14	33K				

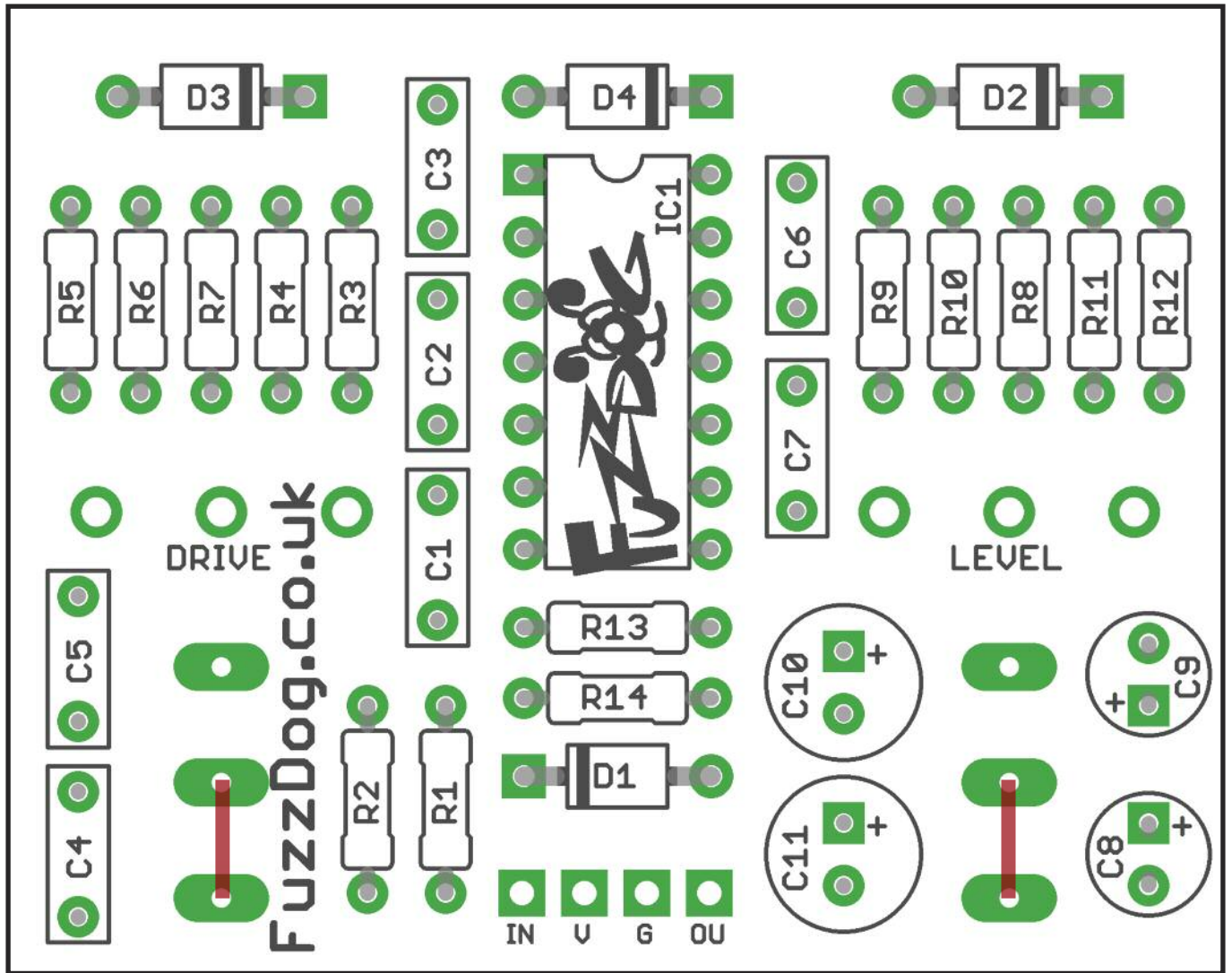
*Original is 1S1588 but these are obsolete.

**Obsolete.

TL074 is a good replacement, and what we supply.

***See next page.

The original OD-1 has a 4K7 resistor between C9 and pin 3 of the volume pot. There's just no need, so we've removed it.



Snap the small metal tag off the pots so they can be mounted flush in the box.

You should solder all other board-mounted components before you solder the pots.

Once they're in place you'll have no access to much of the board.

JUMPERS

If you're building the standard OD-1 you need jumpers as shown above in red.



Drilling template

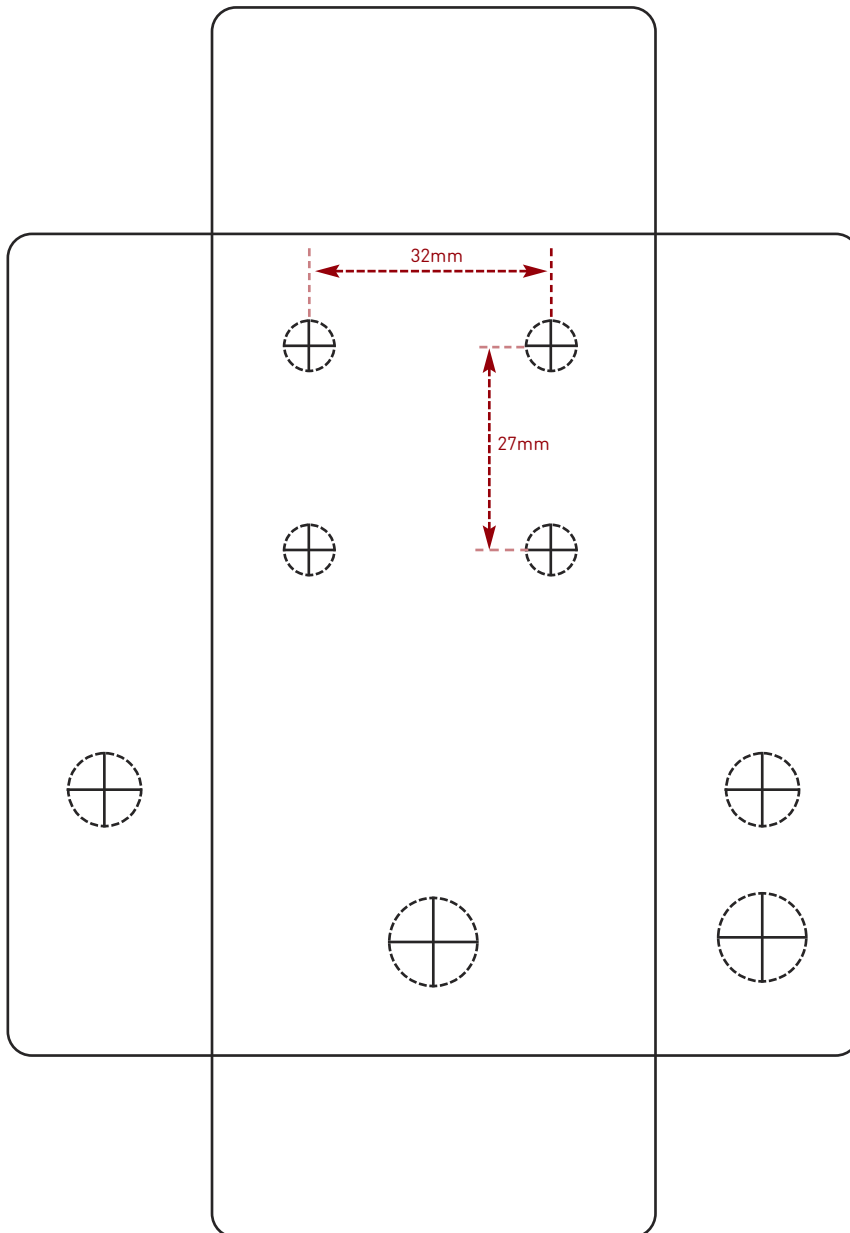
Hammond 1590B - 60 x 111 x 31mm

Drill sizes listed are minimum.

It's a good idea to add 1mm to anything mounted on the PCB that'll poke through the front of the enclosure.

Drill sizes:

Pots	7mm
Jacks	10mm
Footswitch	12mm
DC Socket	12mm
Toggle switches	6mm
Rotary switches	10mm



This template is a rough guide only. You should ensure correct marking of your enclosure before drilling. You use this template at your own risk.

Pedal Parts Ltd can accept no responsibility for incorrect drilling of enclosures.

FuzzDog.co.uk