

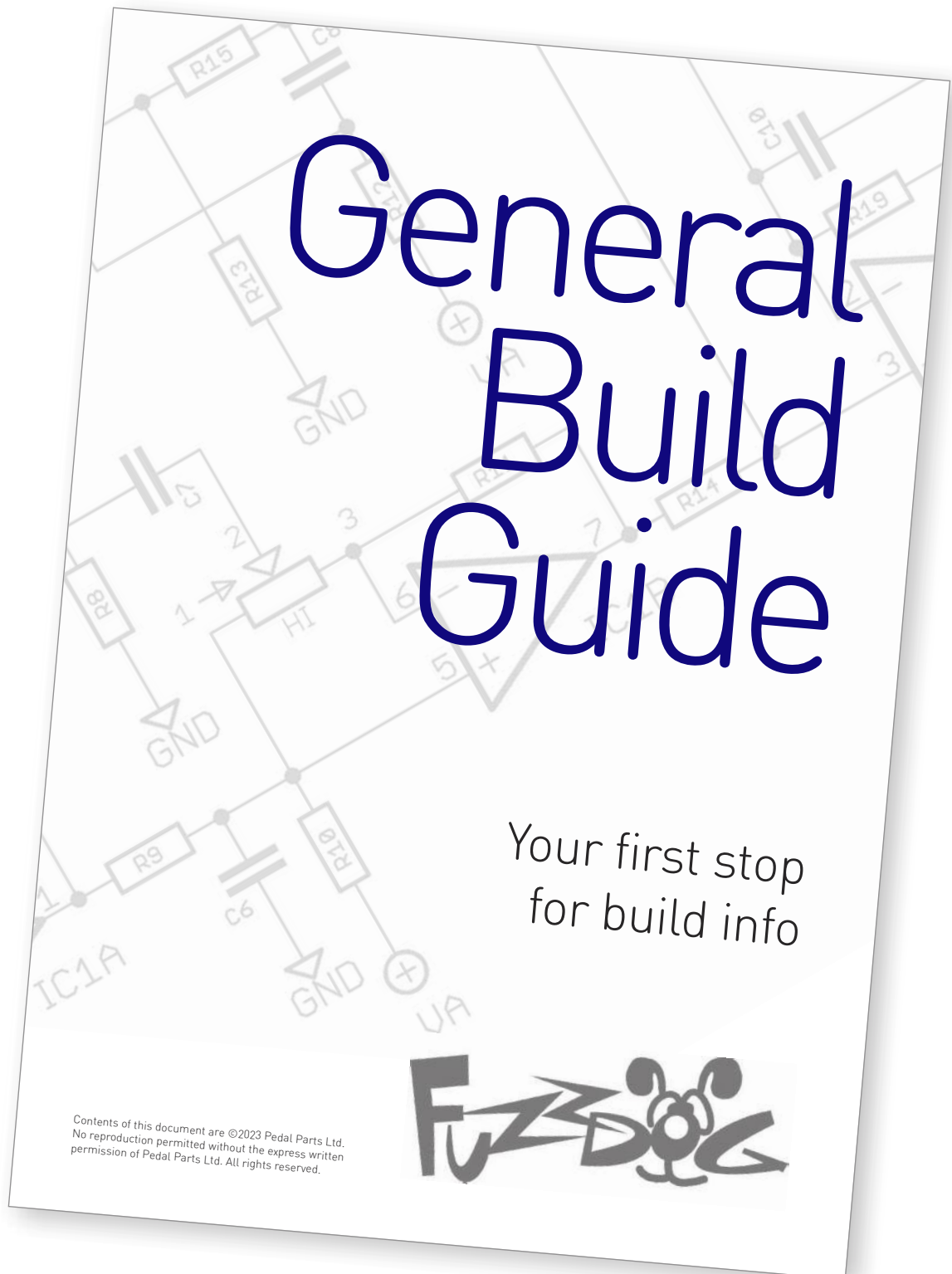
# Notcher

Based on the  
Intersound "The Notch"

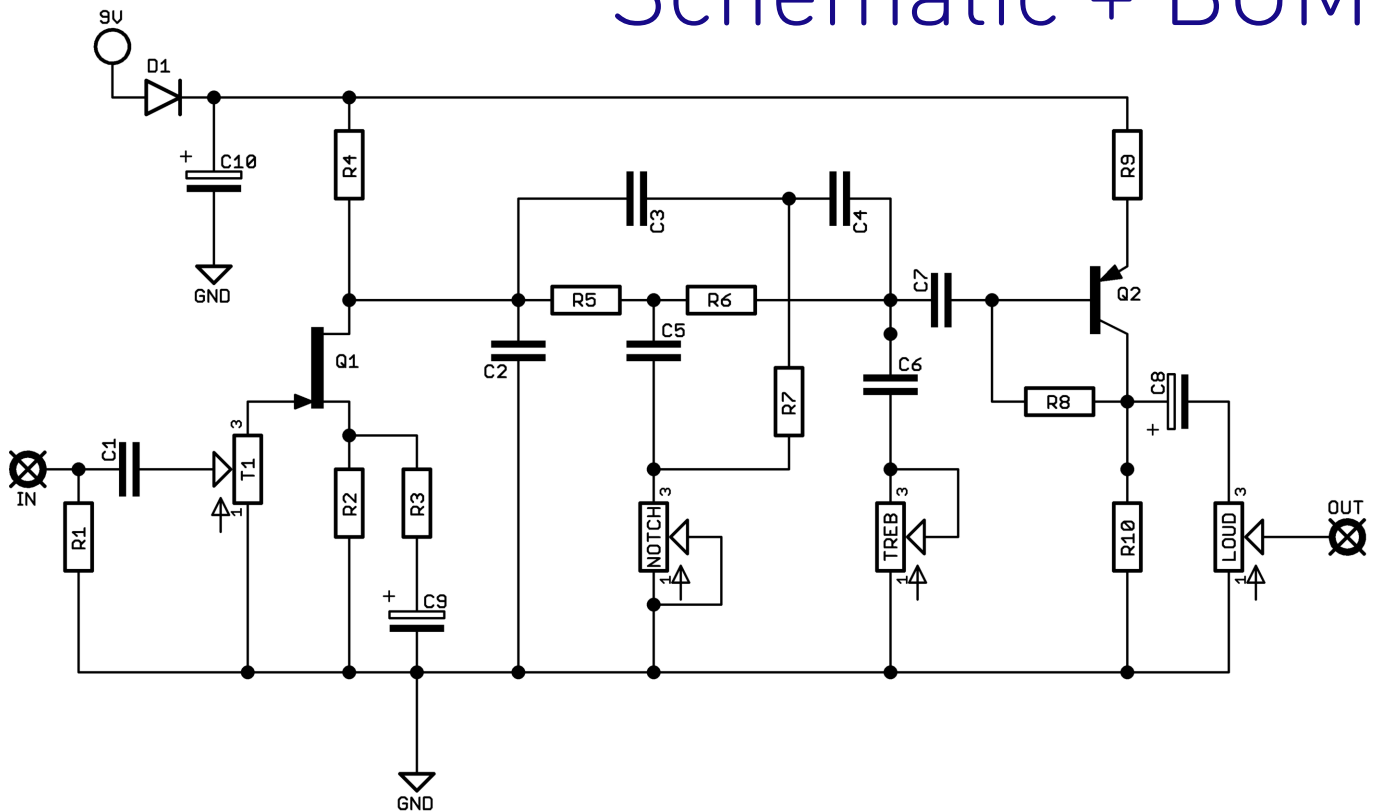


Before you dig in, ensure you download and read the **General Build Guide**.

It contains all the information you need for a successful outcome.



# Schematic + BOM



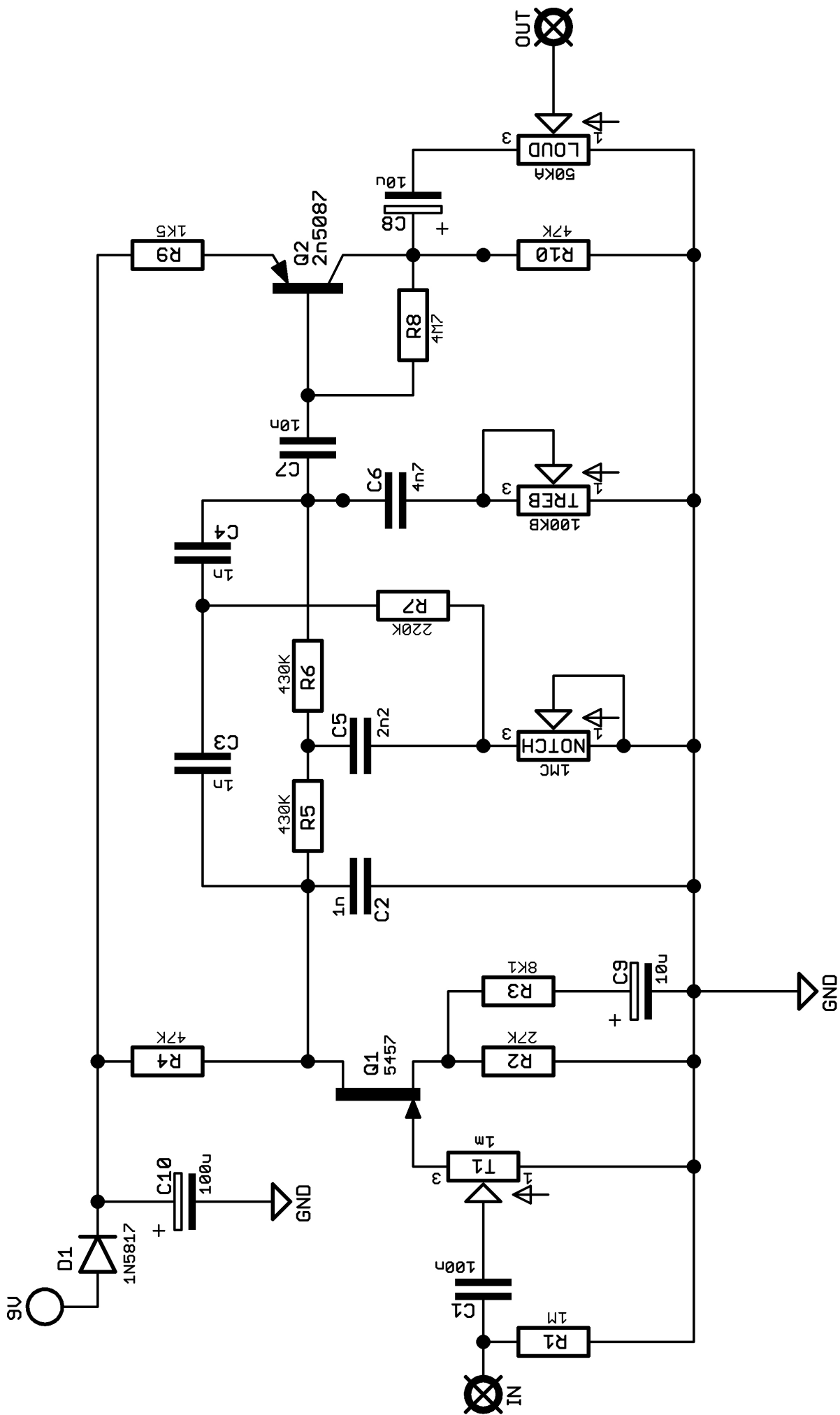
R1 1M\*  
 R2 27K  
 R3 8K1\*\*  
 R4 47K  
 R5 430K  
 R6 430K  
 R7 220K  
 R8 4M7  
 R9 1K5  
 R10 47K

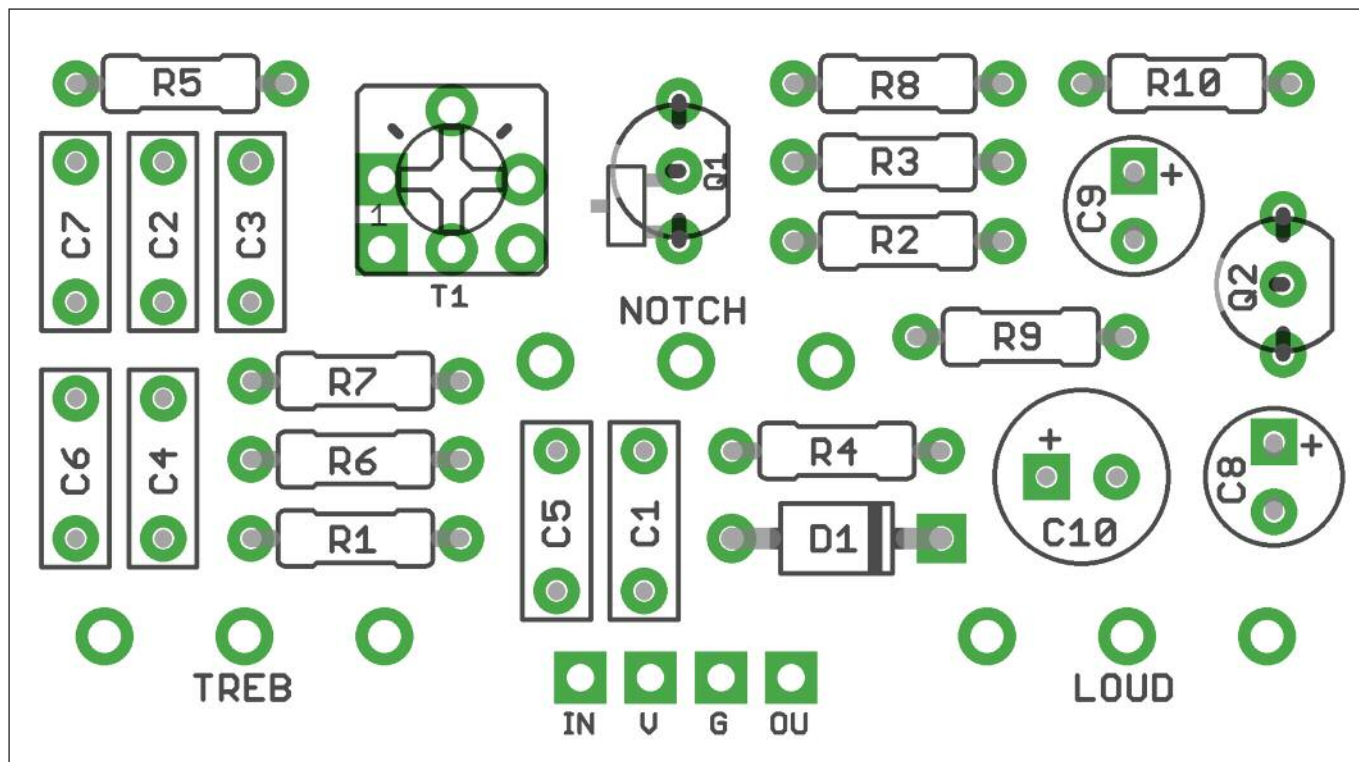
C1 100n\*  
 C2 1n  
 C3 1n  
 C4 1n  
 C5 2n2  
 C6 4n7  
 C7 10n  
 C8 10u elec  
 C9 10u elec  
 C10 100u elec

D1 1N5817  
 Q1 2N5457 /  
 MMBF5457  
 Q2 2N5087  
 LOUD 50KA  
 NOTCH 1MC  
 TREB 100KB  
 T1 1M trimmer

\*Not in original, but adds decoupling and anti-pop to the circuit. Feel free to leave them out and jumper C1.

\*\*8K2 will be fine.



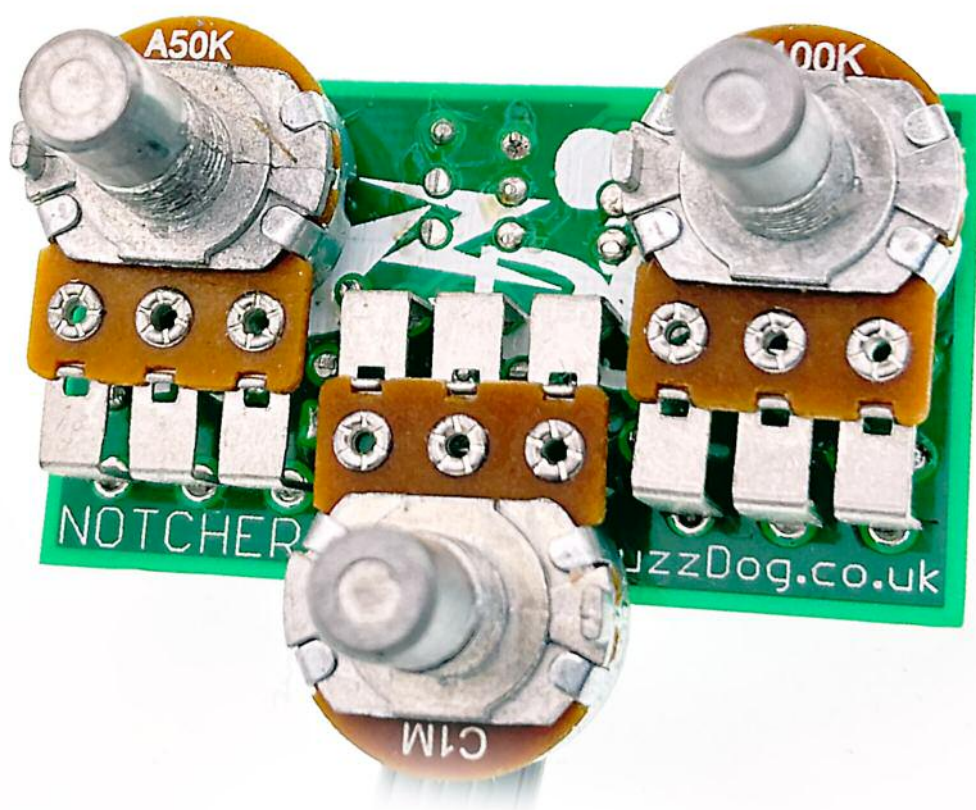


Snap the small metal tag off the pots so they can be mounted flush in the box.

You should solder all other board-mounted components before you solder the pots.

Once they're in place you'll have no access to much of the board.

Adjust the trimmer to set your input level to your own taste.



# Drilling template

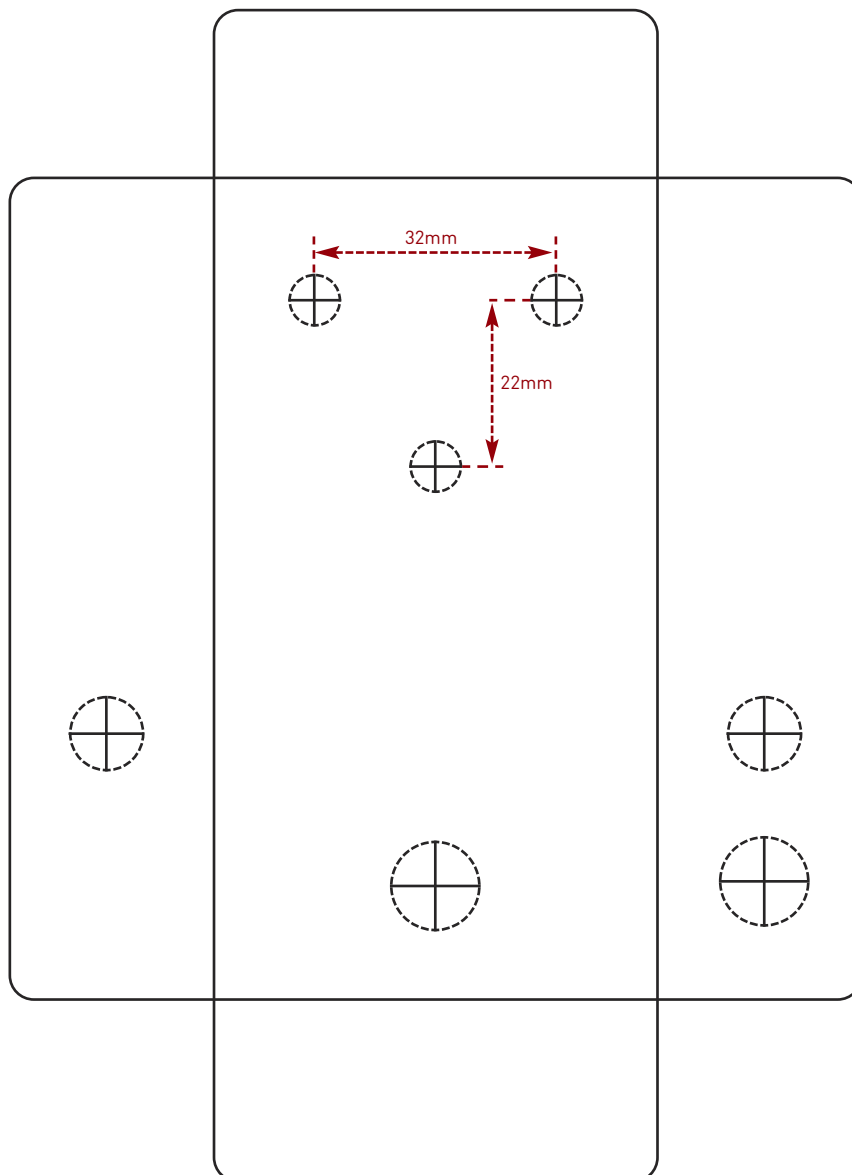
**Hammond 1590B - 60 x 111 x 31mm**

Drill sizes listed are minimum.

It's a good idea to add 1mm to anything mounted on the PCB that'll poke through the front of the enclosure.

Drill sizes:

Pots	7mm
Jacks	10mm
Footswitch	12mm
DC Socket	12mm



This template is a rough guide only. You should ensure correct marking of your enclosure before drilling. You use this template at your own risk.

Pedal Parts Ltd can accept no responsibility for incorrect drilling of enclosures.

FuzzDog.co.uk