

# Naughty Monkey

Tube-Screamer style fella  
with Two-band EQ

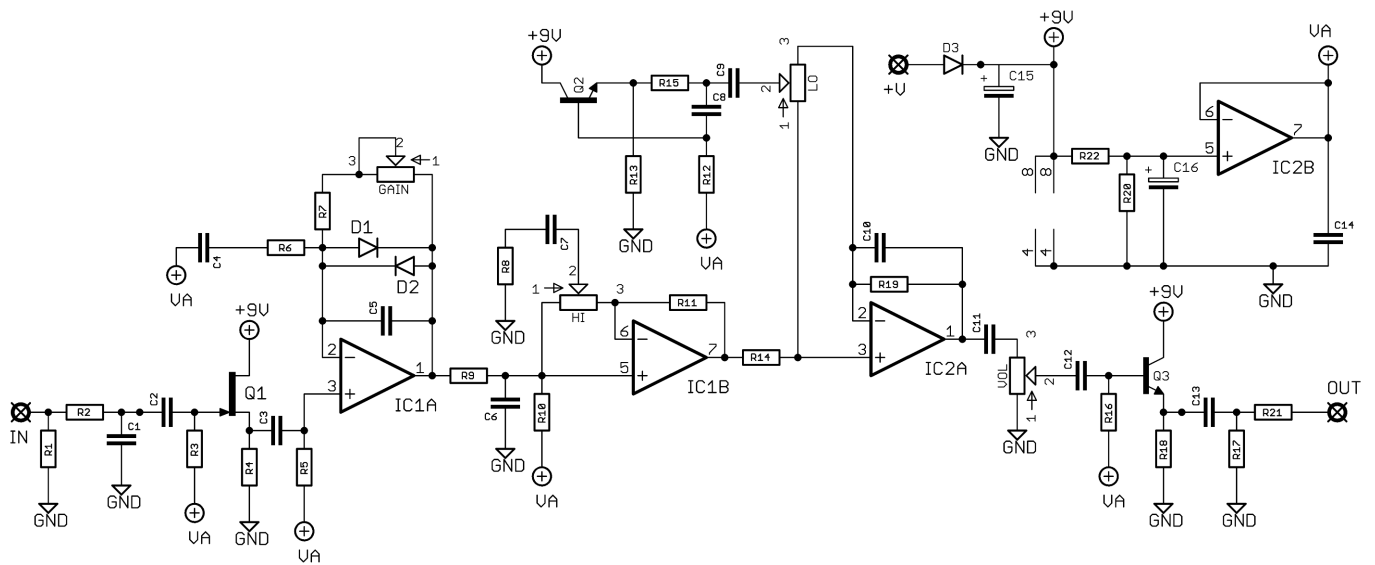


Before you dig in, ensure you download and read the **General Build Guide**.

It contains all the information you need for a successful outcome.



# Schematic + BOM

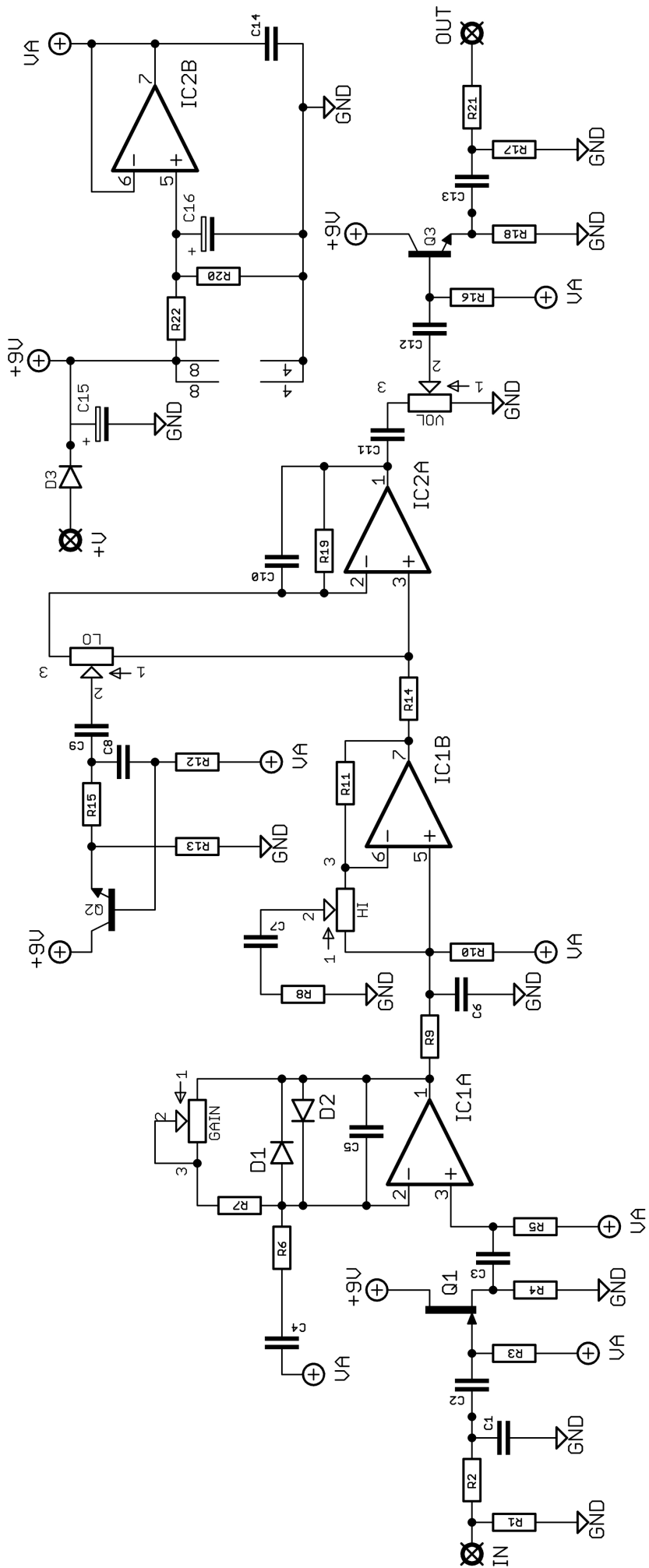


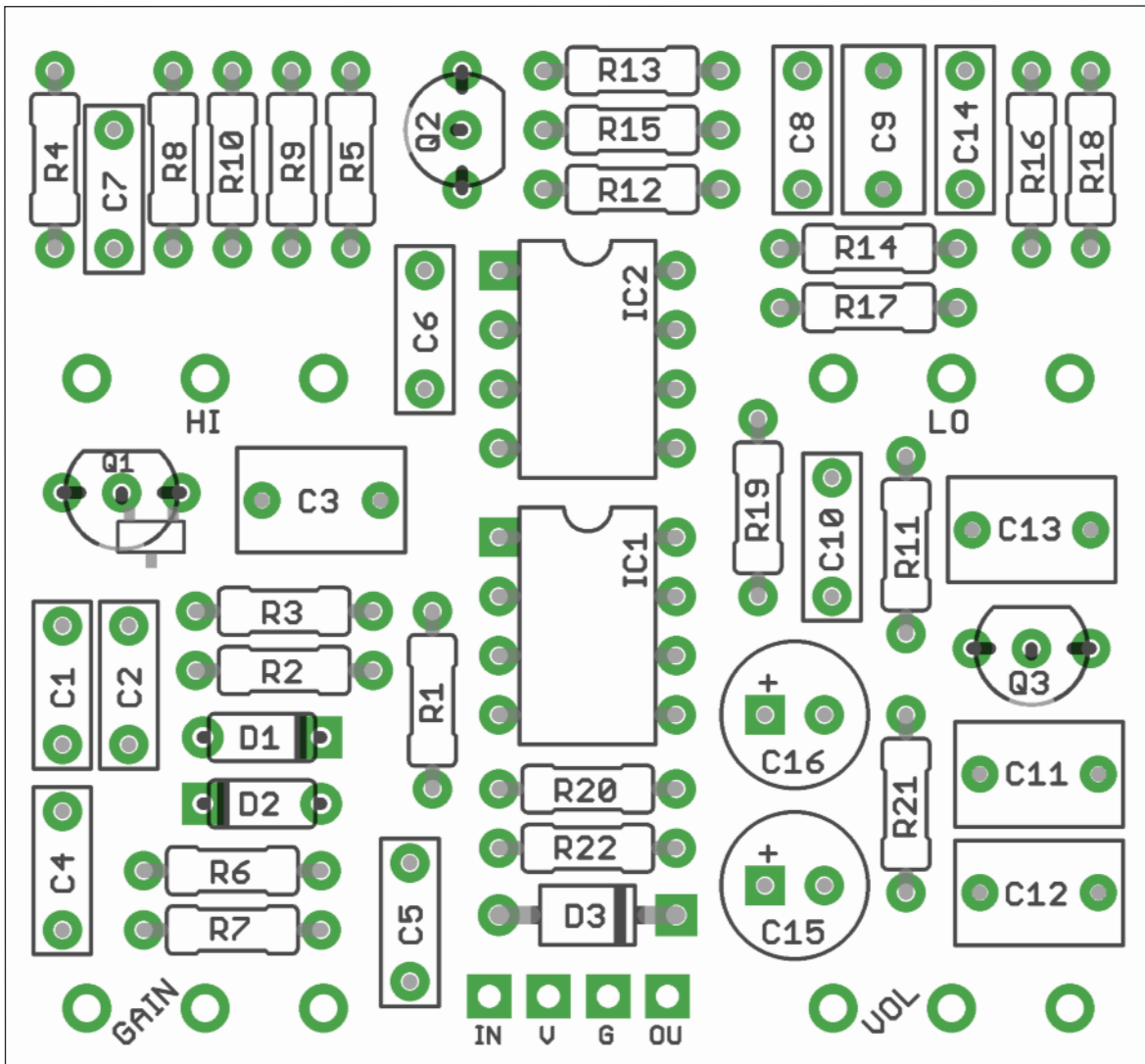
R1	1M	C1	120p	D1-2	1N4148
R2	1K	C2	47n	D3	1N5817
R3	1M	C3	1u	IC1-2	4558
R4	10K	C4	220n	Q1	N-channel FET*
R5	100K	C5	220p	Q2	2N3904**
R6	1K	C6	47n	Q3	2N3904
R7	10K	C7	47n	GAIN	100KB
R8	1K	C8	47n	HI	100KB***
R9	5K1	C9	470n	LO	100KB***
R10	100K	C10	47p	VOL	100KA
R11	5K1	C11	1u		
R12	100K	C12	1u		
R13	10K	C13	1u		
R14	22K	C14	100n		
R15	1K	C15	100u elec		
R16	100K	C16	100u elec		
R17	100K				
R18	10K				
R19	22K				
R20	27K				
R21	100R				
R22	27K				

\*The usual suspect will work here - 2N5457, J201.  
There are pads on the PCB for through-hole or their SMT equivalents (MMBF5457, MMBF201).

\*Q2 needs to be reversed compared to the silkscreen outline on the PCB, same as on the cover image.

\*\*W-taper in the original, but they're pretty hard to find. Linear does a decent job.





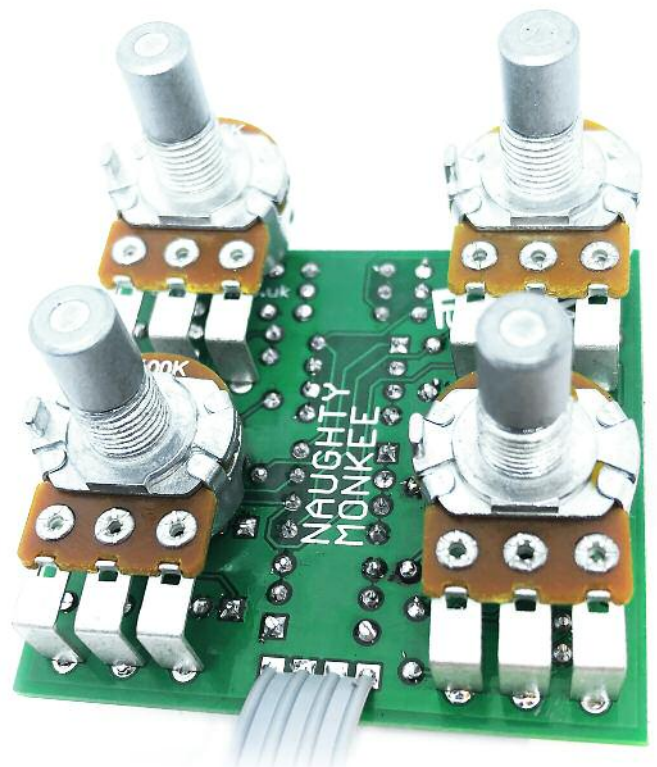
PCB layout ©2023 Pedal Parts Ltd.

Snap the small metal tag off the pots so they can be mounted flush in the box.

You should solder all other board-mounted components before you solder the pots and switches. Once they're in place you'll have no access to much of the board. Make sure your pots all line up nicely.

The best way to do that is to solder a single pin of each pot in place then melt and adjust if necessary before soldering in the other two pins.

**DON'T FORGET TO REVERSE Q2!!**



# Drilling template

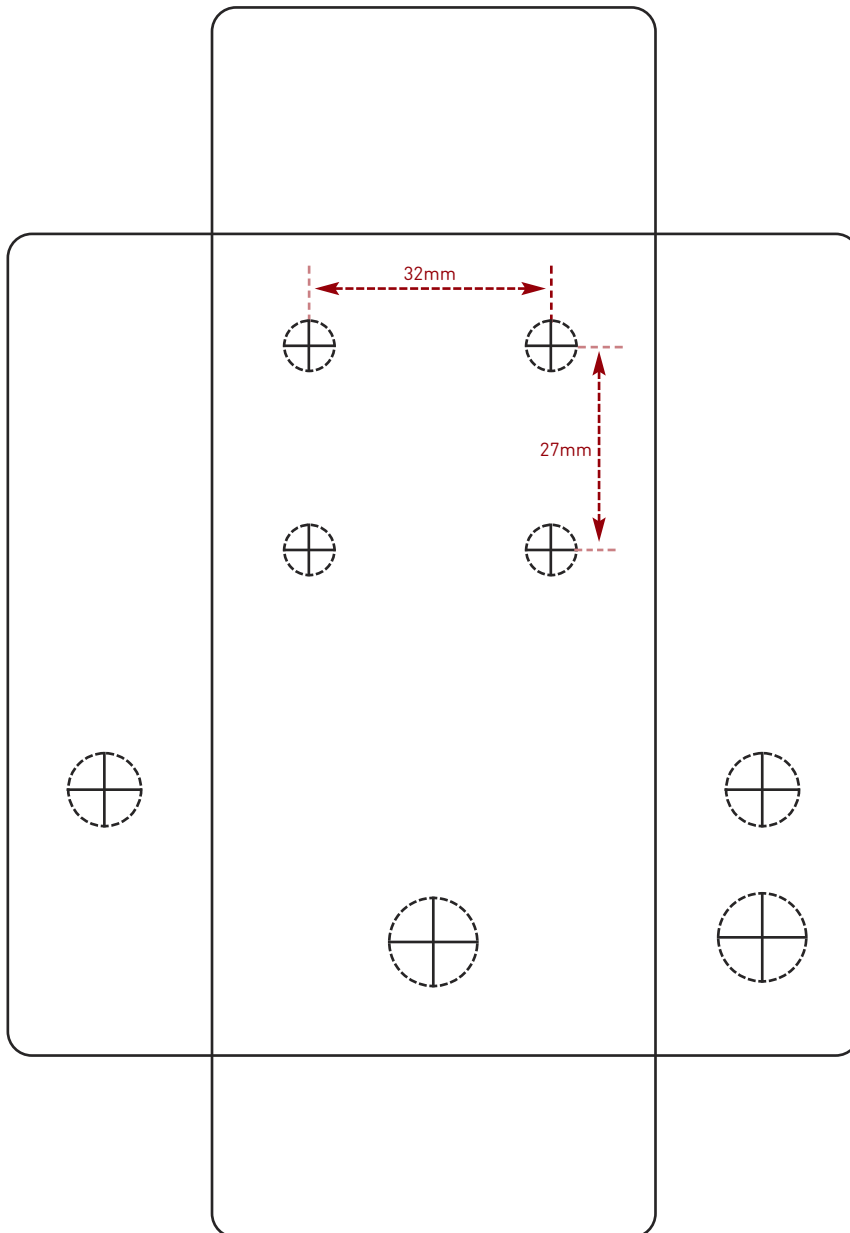
**Hammond 1590B - 60 x 111 x 31mm**

Drill sizes listed are minimum.

It's a good idea to add 1mm to anything mounted on the PCB that'll poke through the front of the enclosure.

Drill sizes:

Pots	7mm
Jacks	10mm
Footswitch	12mm
DC Socket	12mm
Toggle switches	6mm
Rotary switches	10mm



This template is a rough guide only. You should ensure correct marking of your enclosure before drilling. You use this template at your own risk.

Pedal Parts Ltd can accept no responsibility for incorrect drilling of enclosures.

FuzzDog.co.uk