

Metal Simplex

Super simple silicon fuzz
- a DIY staple

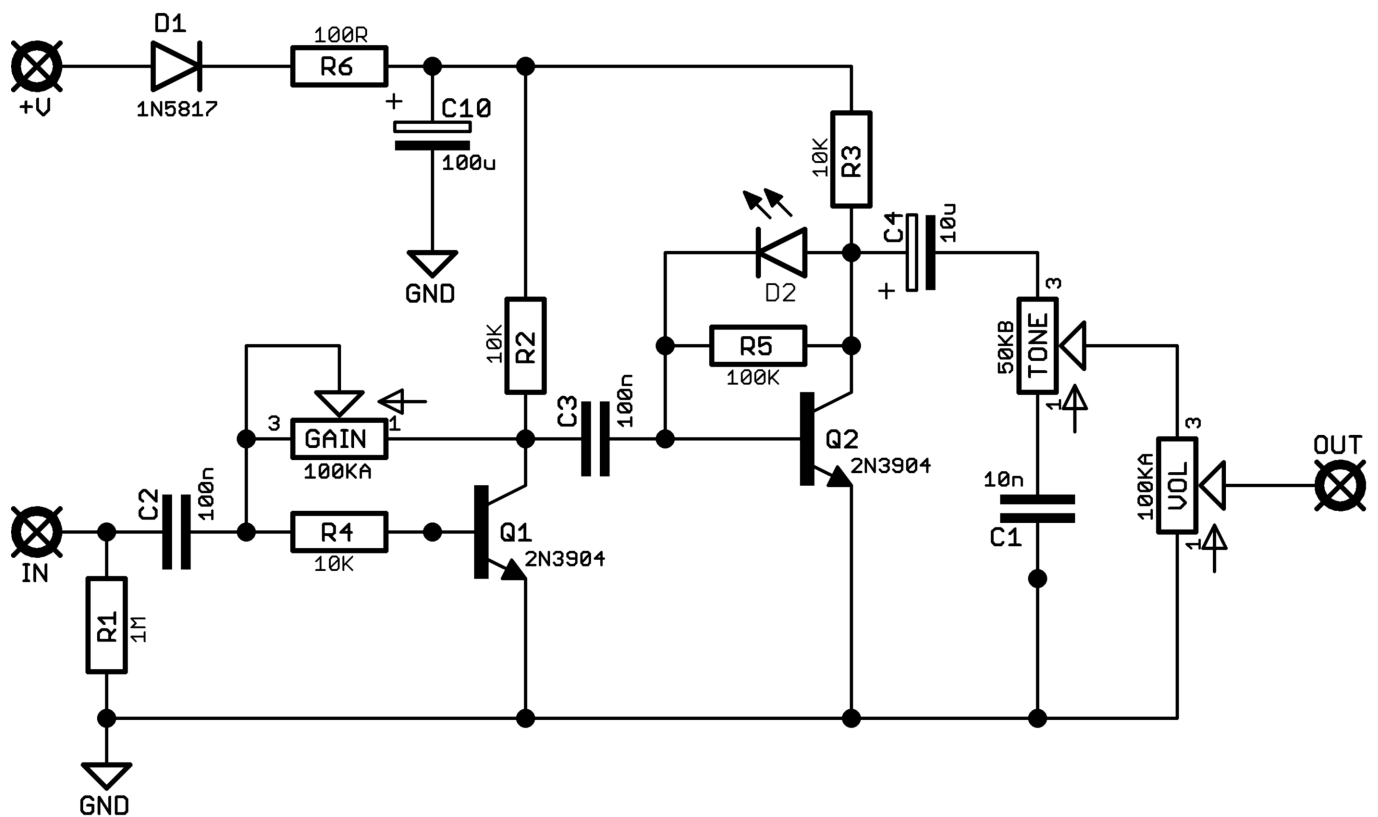


Before you dig in, ensure you download and read the **General Build Guide**.

It contains all the information you need for a successful outcome.

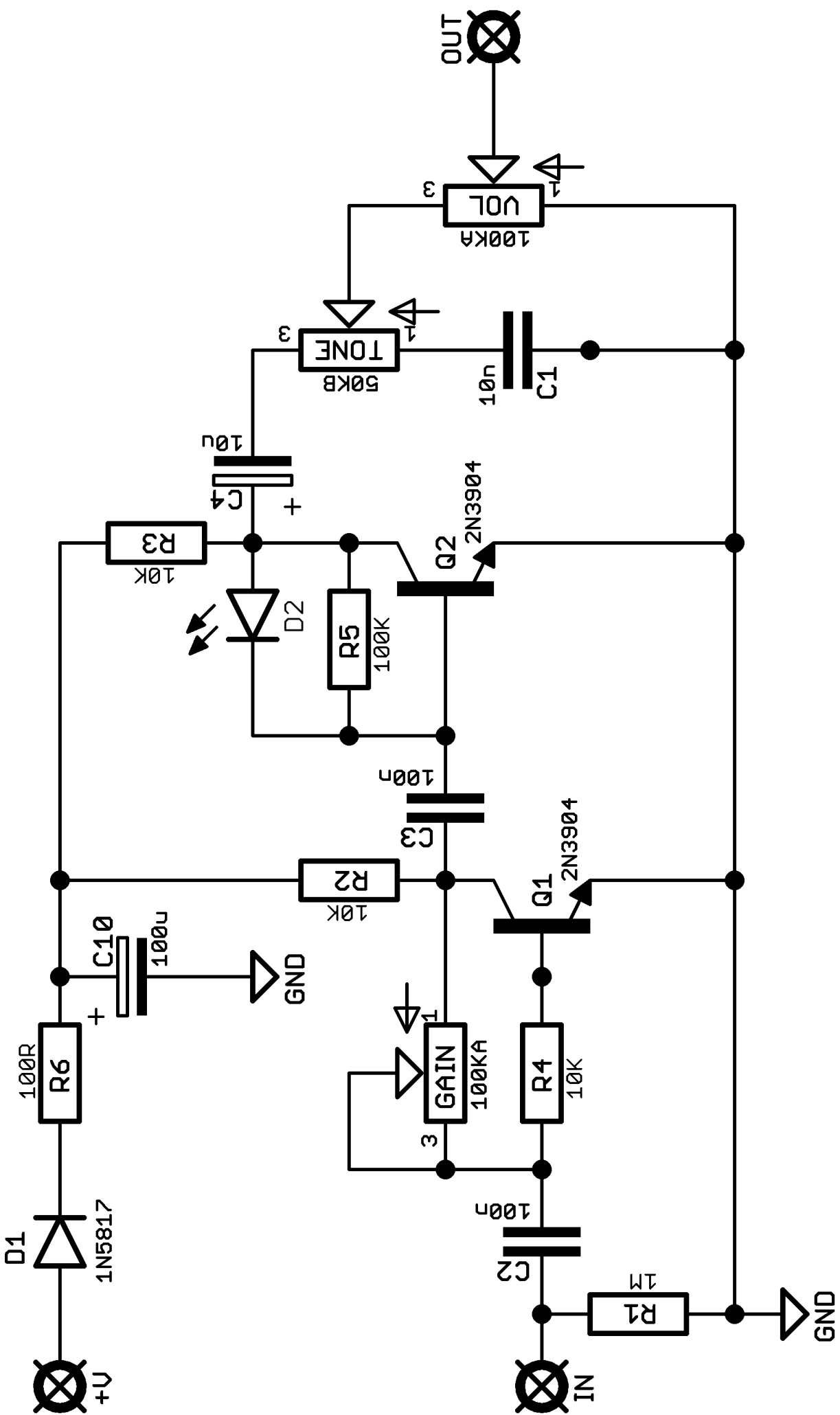


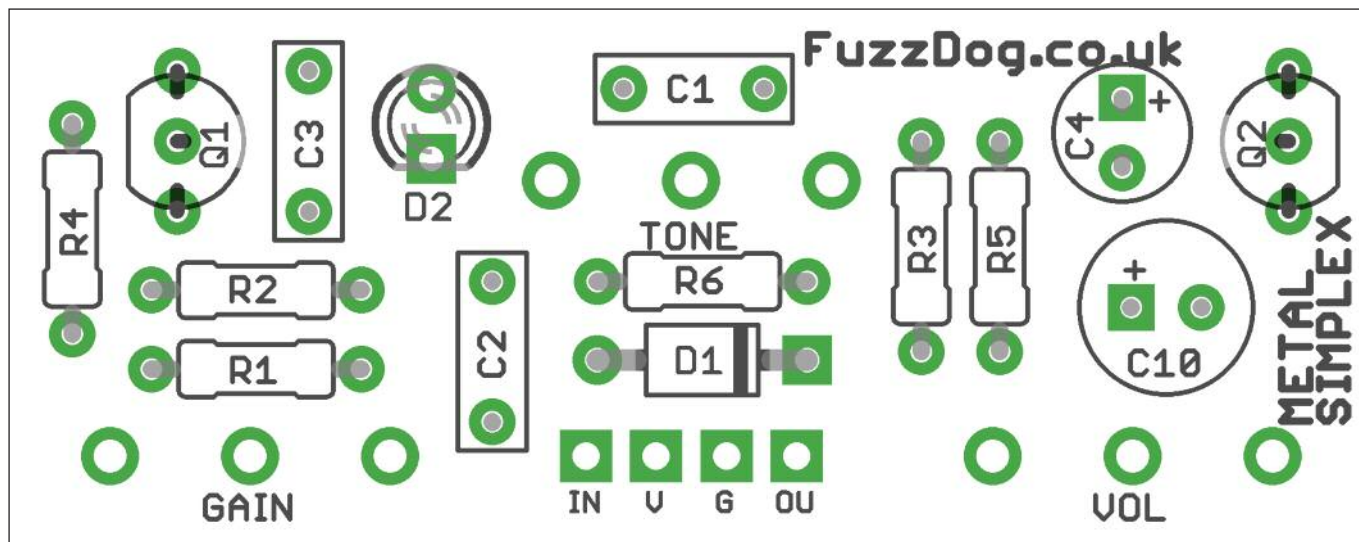
Schematic + BOM



R1	1M	D1	1N5817
R2	10K	D2	3mm Red LED
R3	10K		
R4	10K	Q1	2N3904 <>220hFE*
R5	100K	Q2	2N3904 <>170hFE*
R6	100R		
		GAIN	100KA
C1	10n	TONE	50KB
C2	100n	VOL	100KA
C3	100n		
C4	10u elec		
C10	100u elec		

*The original design calls for these values, but after some swapping out we found it works without such specifics. Feel free to try other usual suspect BJTs, or even some fancy exotics you have kicking around.





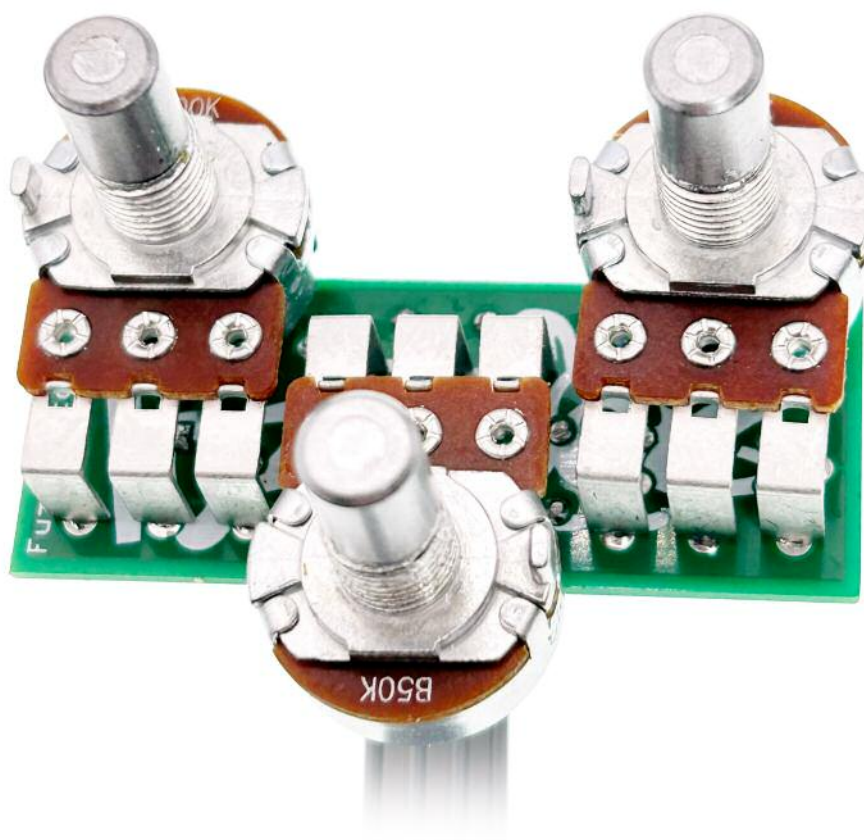
Snap the small metal tag off the pots so they can be mounted flush in the box.

You should solder all other board-mounted components before you solder the pots.

Once they're in place you'll have no access to much of the board.

RIBBON CABLE

We recommend you put this on the top side of the PCB, as per the cover image, so it isn't in the way of the Tone pot.



Drilling template

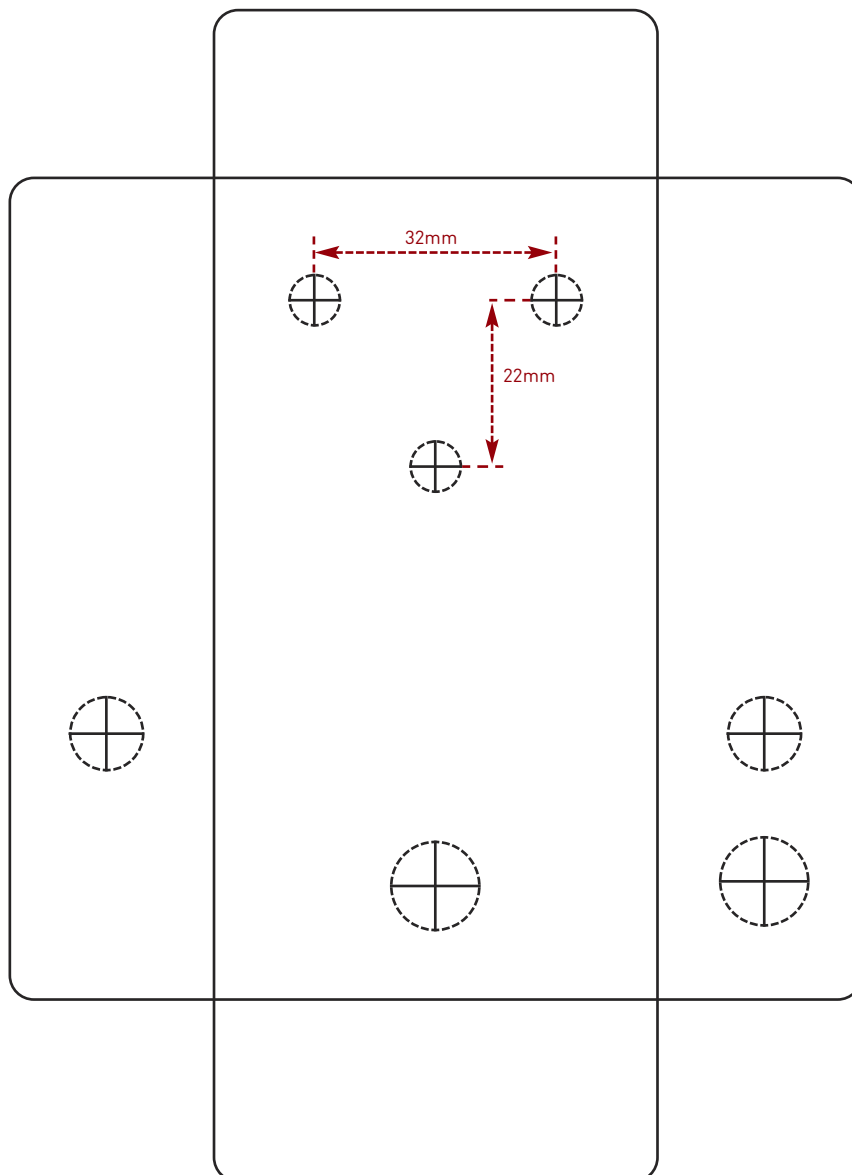
Hammond 1590B - 60 x 111 x 31mm

Drill sizes listed are minimum.

It's a good idea to add 1mm to anything mounted on the PCB that'll poke through the front of the enclosure.

Drill sizes:

Pots	7mm
Jacks	10mm
Footswitch	12mm
DC Socket	12mm



This template is a rough guide only. You should ensure correct marking of your enclosure before drilling. You use this template at your own risk.

Pedal Parts Ltd can accept no responsibility for incorrect drilling of enclosures.

FuzzDog.co.uk