

# Magic Buffer Box

Buffer, cleaan boost, oomph  
- this one does the lot

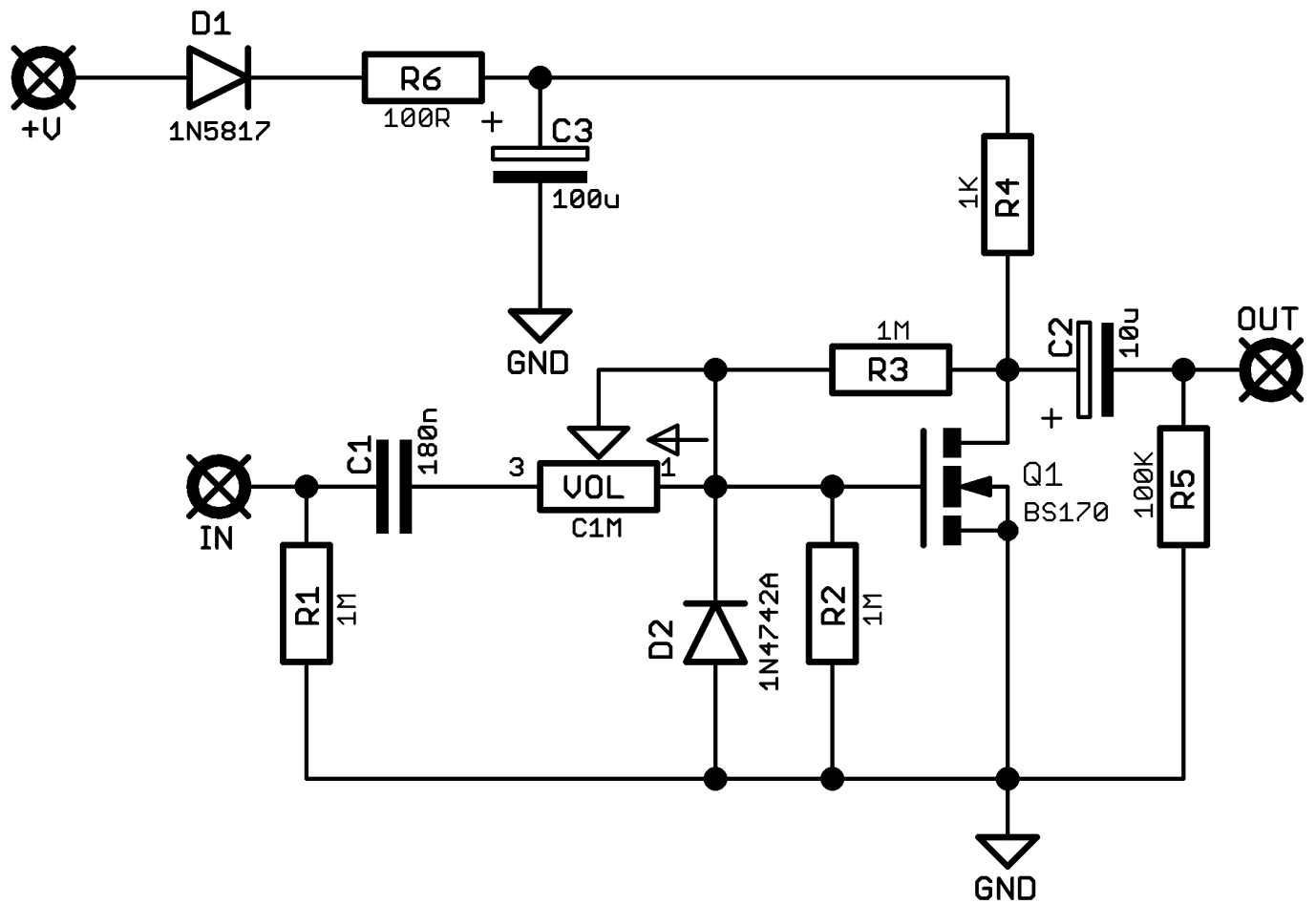


Before you dig in, ensure you download and read the **General Build Guide**.

It contains all the information you need for a successful outcome.



# Schematic + BOM



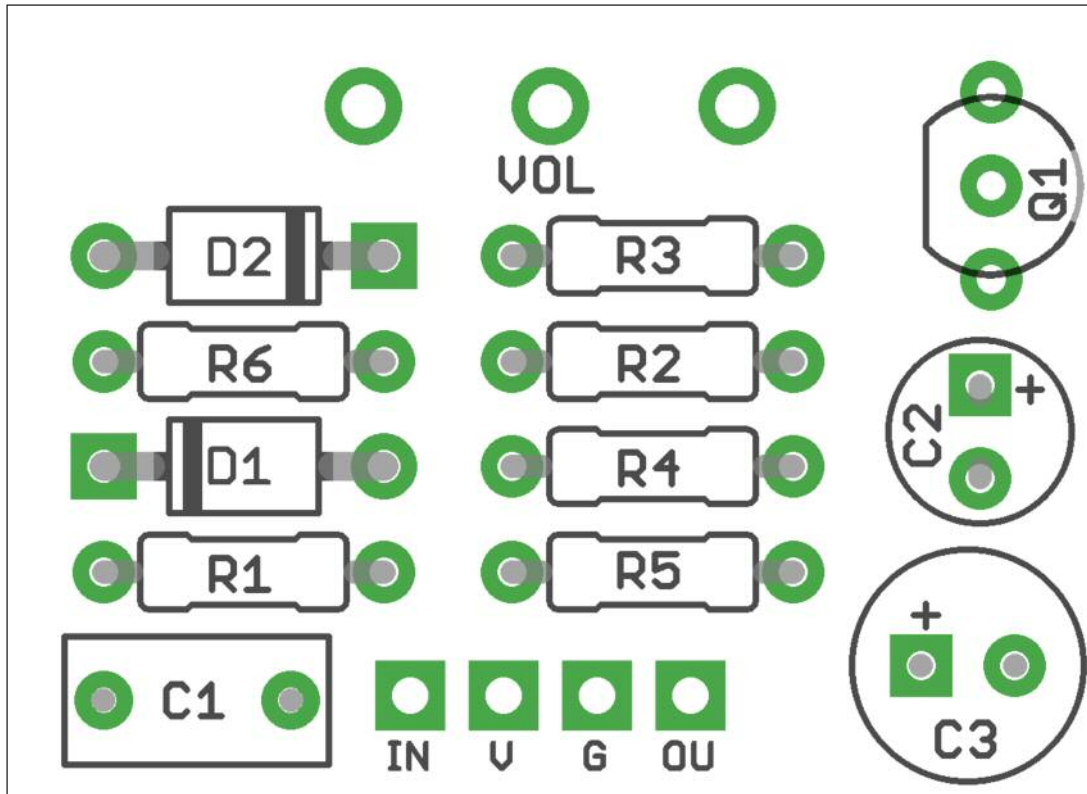
R1 1M  
R2 1M  
R3 1M  
R4 1K  
R5 100K  
R6 100R

C1 180n\*  
C2 10u elec  
C3 100u elec

D1 1N5817  
D2 1N4742A\*\*  
Q1 BS170  
VOL C1M

\*Pretty arbitrary value.  
No harm in going for  
150n or 220n.

\*12V zener.



Snap the small metal tag off the pot so it can be mounted flush in the box.

You should solder all other board-mounted components before you solder the pot.

Once it's in place you'll have no access to much of the board.

# Drilling template

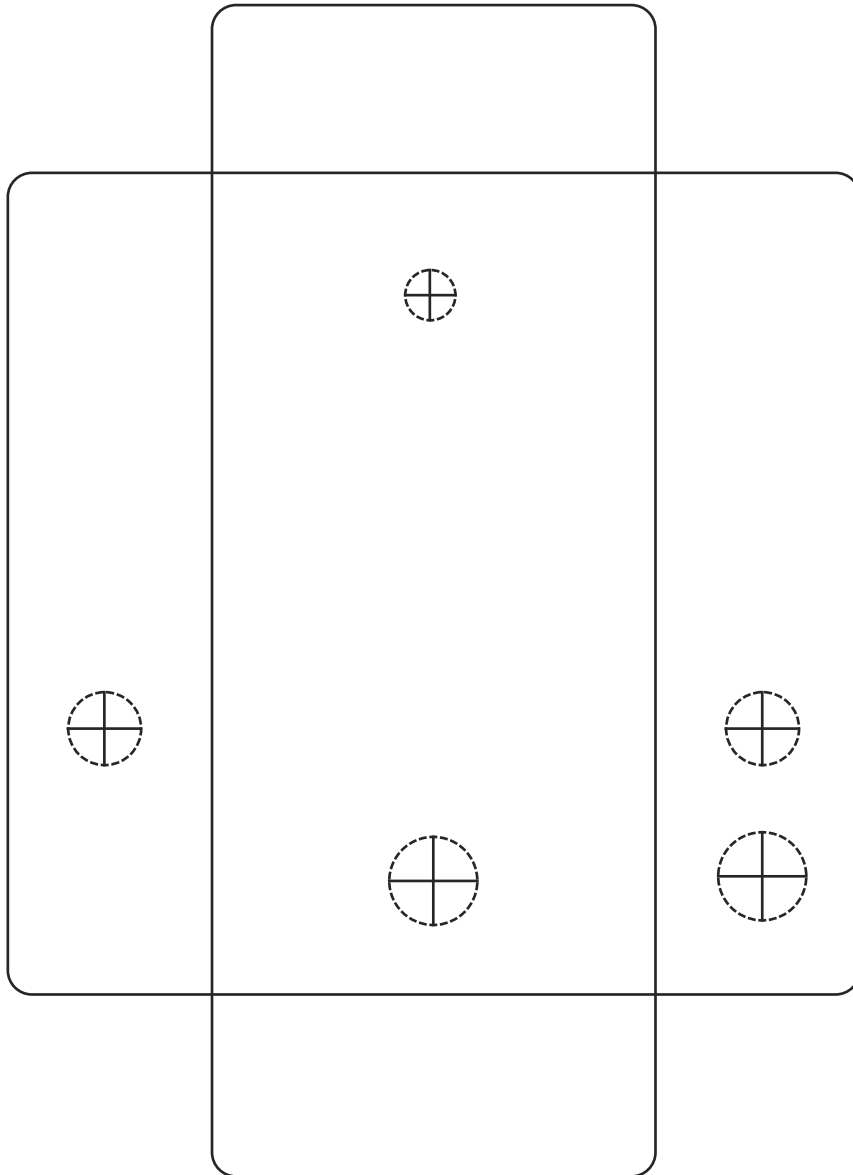
**Hammond 1590B - 60 x 111 x 31mm**

Drill sizes listed are minimum.

It's a good idea to add 1mm to anything mounted on the PCB that'll poke through the front of the enclosure.

Drill sizes:

Pots	7mm
Jacks	10mm
Footswitch	12mm
DC Socket	12mm



This template is a rough guide only. You should ensure correct marking of your enclosure before drilling. You use this template at your own risk.

Pedal Parts Ltd can accept no responsibility for incorrect drilling of enclosures.

FuzzDog.co.uk