

# Mega Armageddon Death

Total sonic assault

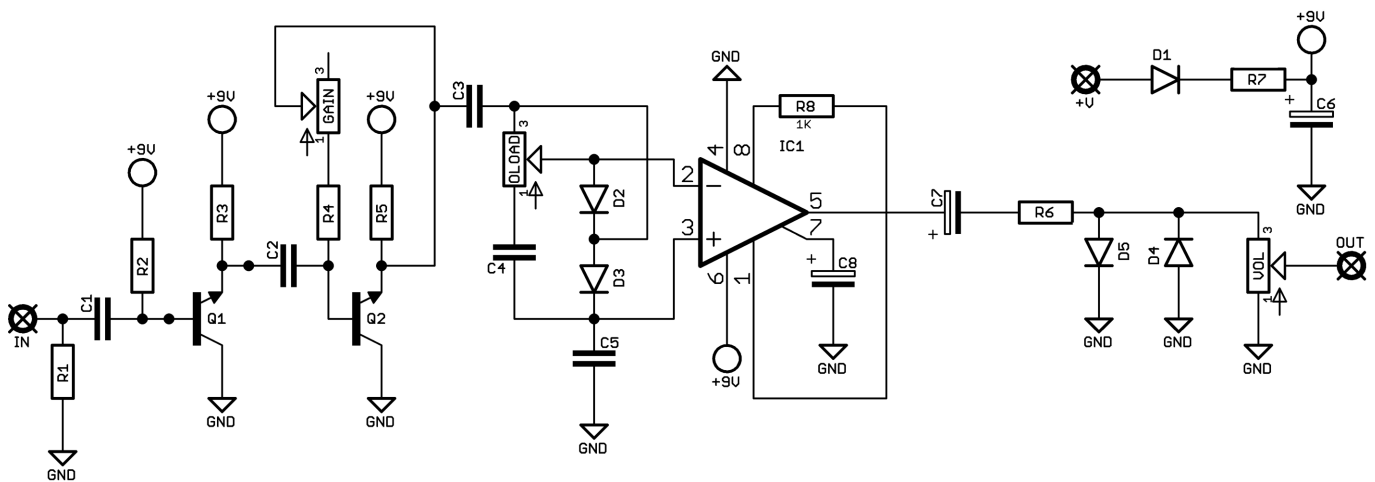


Before you dig in, ensure you download and read the **General Build Guide**.

It contains all the information you need for a successful outcome.

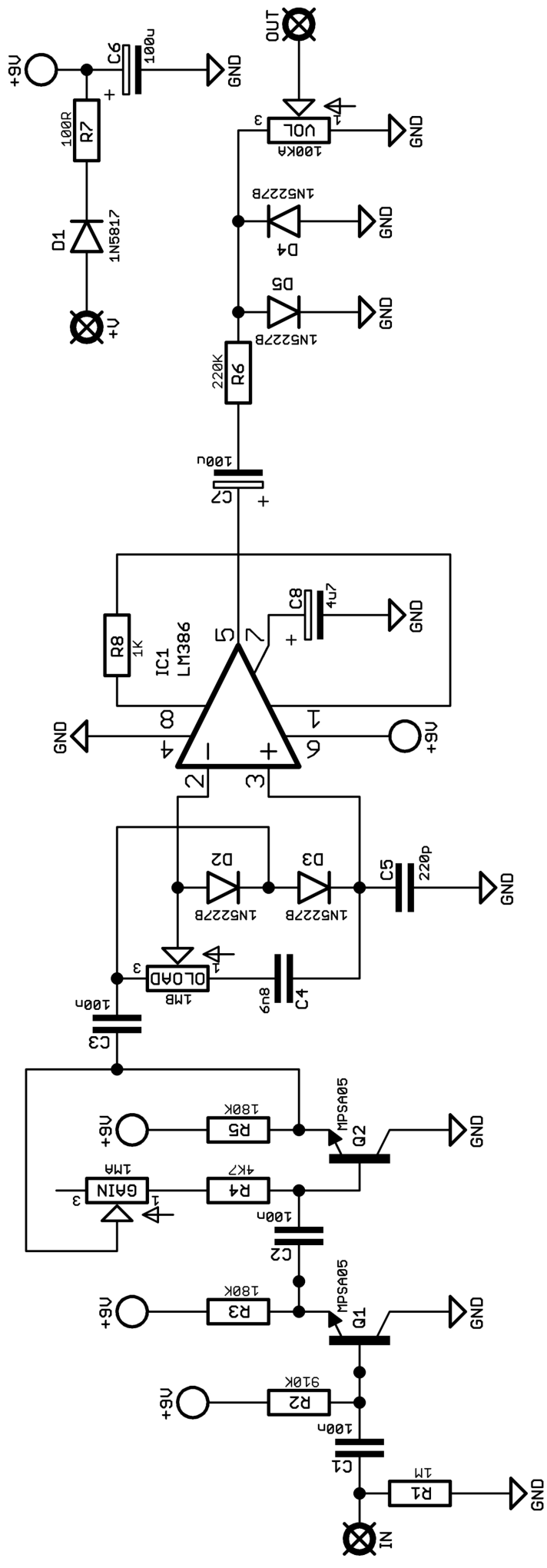


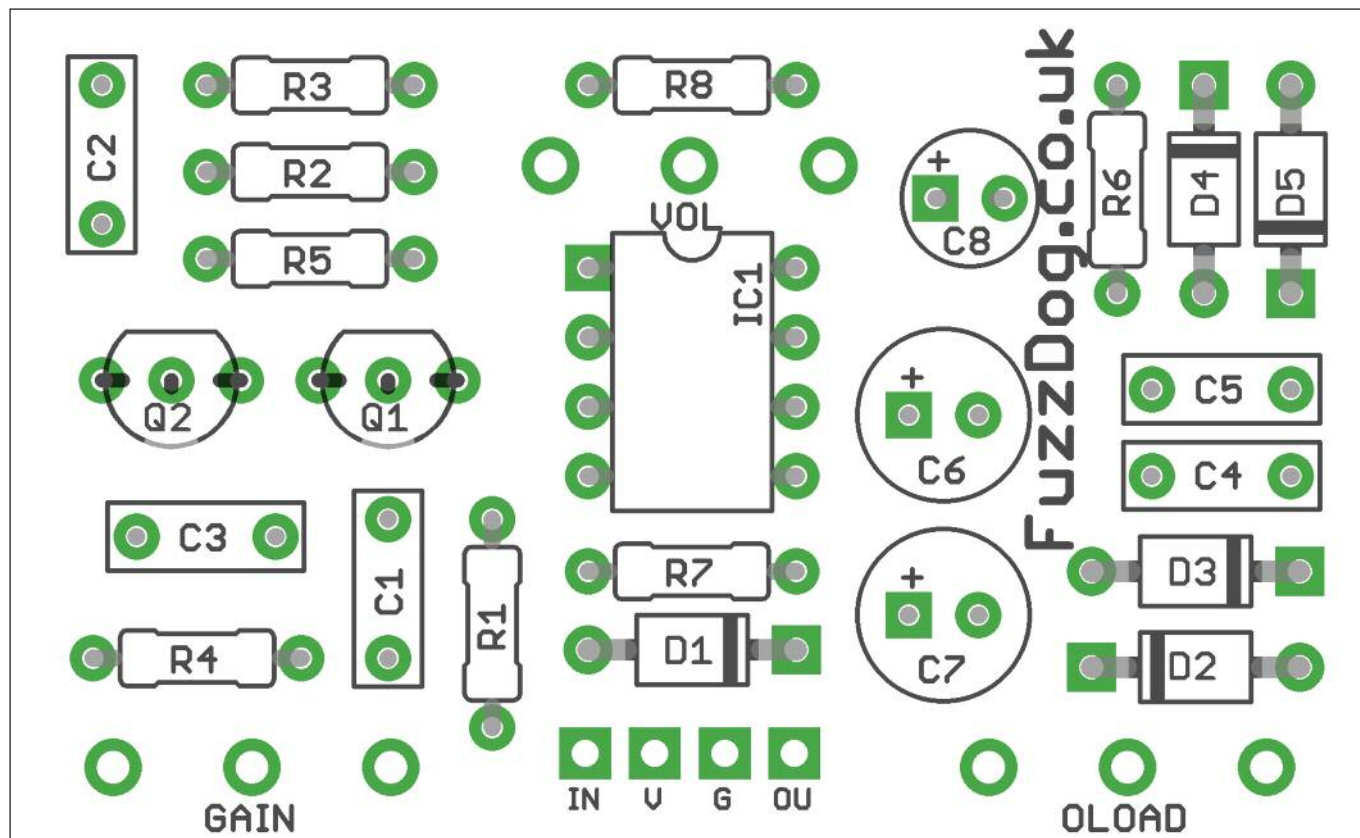
# Schematic + BOM



R1	1M	C1	100n	D1	1N5817
R2	910K	C2	100n	D2-5	1N5227B
R3	180K	C3	100n	IC1	LM386
R4	4K7	C4	6n8	Q1-2	MPSA05
R5	180K	C5	220p		
R6	220K	C6	100u elec		
R7	100R	C7	100u elec		
R8	1K	C8	4u7 elec		
				GAIN	1MA
				OLOAD	1MB
				VOL	100KA

YES - Q1-2 are meant to be like that.

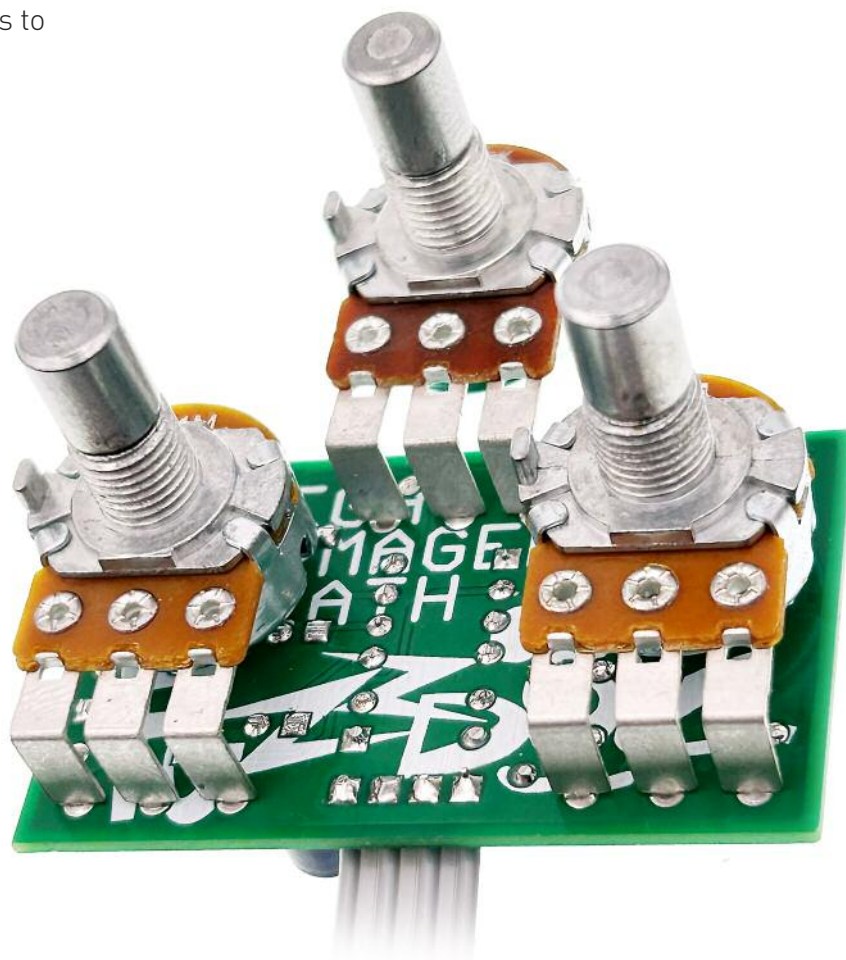




Snap the small metal tags off the pots so they can be mounted flush in the box.

You should solder all other board-mounted components before you solder the pots.

Once they're in place you'll have no access to much of the board.



# Drilling template

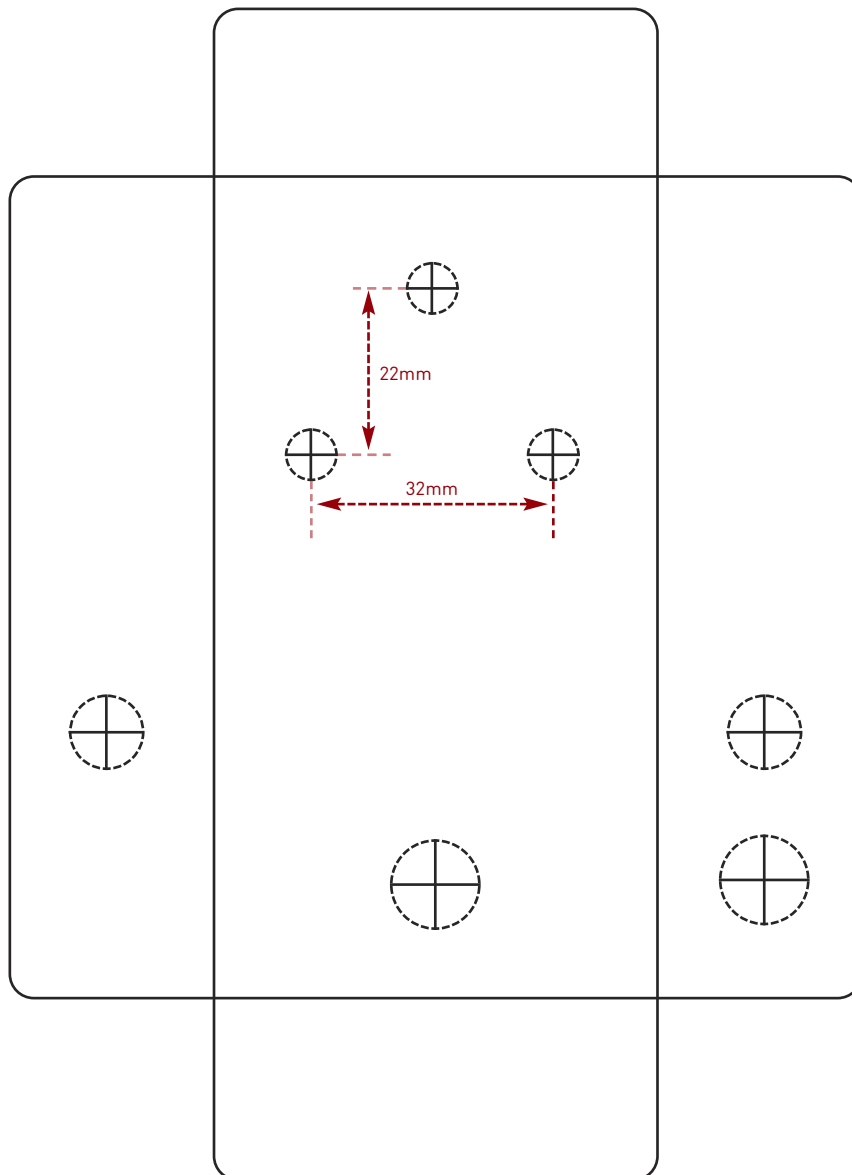
**Hammond 1590B - 60 x 111 x 31mm**

Drill sizes listed are minimum.

It's a good idea to add 1mm to anything mounted on the PCB that'll poke through the front of the enclosure.

Drill sizes:

Pots	7mm
Jacks	10mm
Footswitch	12mm
DC Socket	12mm
Toggle switches	6mm
Rotary switches	10mm



This template is a rough guide only. You should ensure correct marking of your enclosure before drilling. You use this template at your own risk.

Pedal Parts Ltd can accept no responsibility for incorrect drilling of enclosures.

FuzzDog.co.uk