

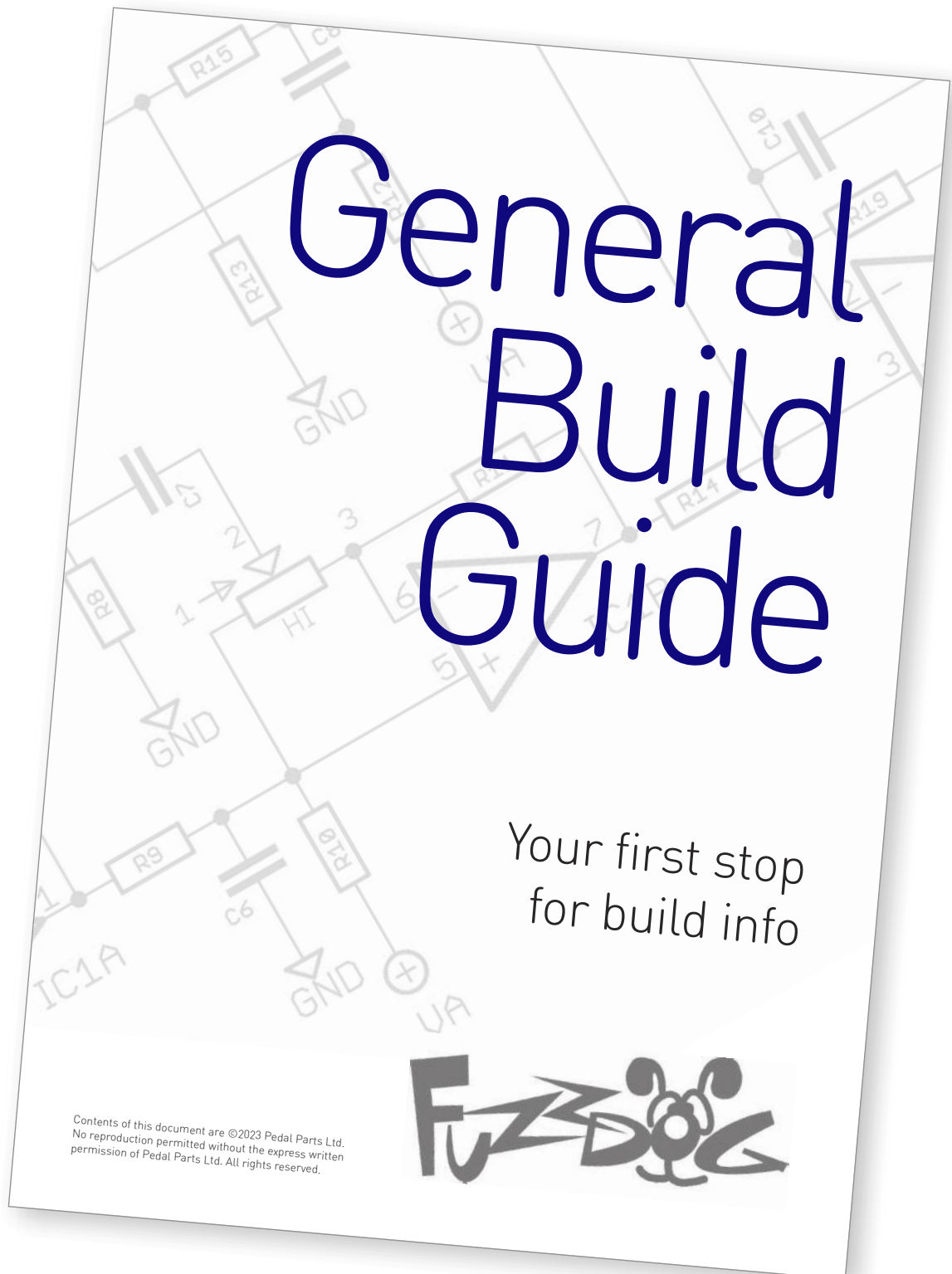
Lovecraft Fuzz

Three-knobs of crushing
cosmic doom

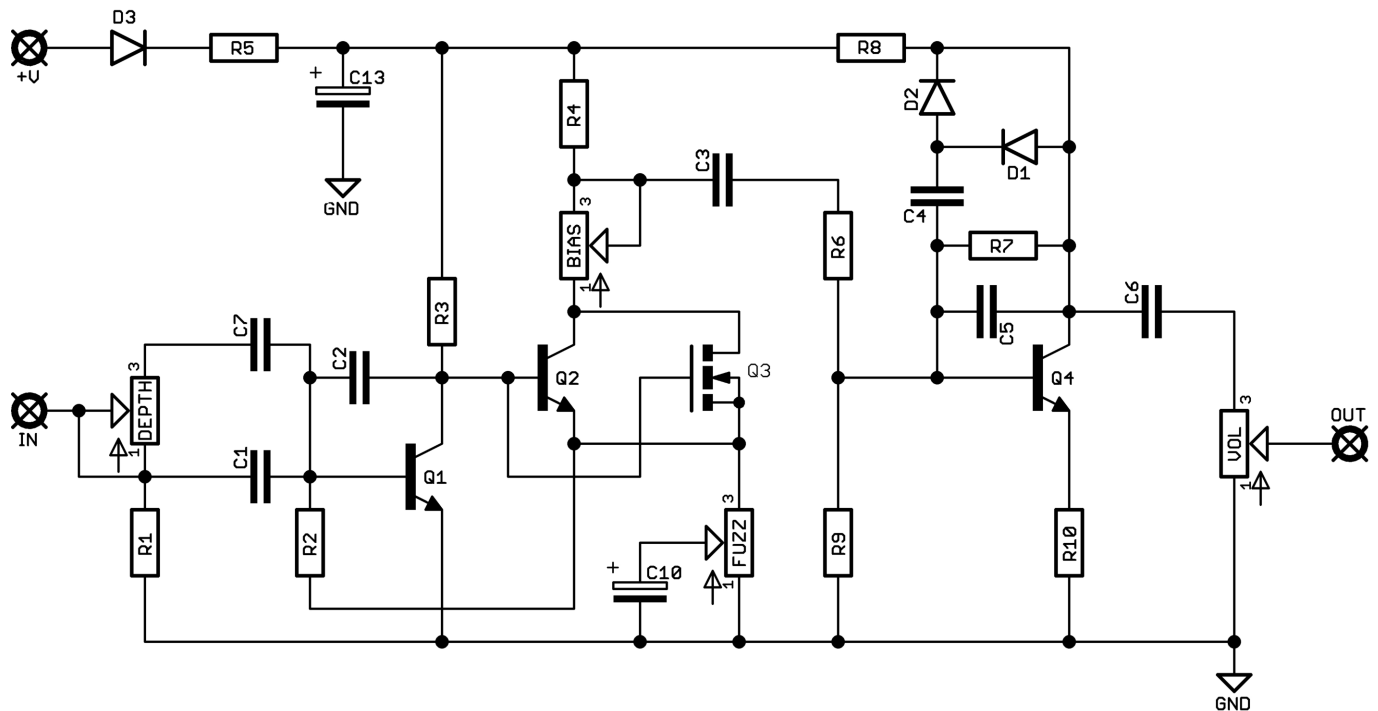


Before you dig in, ensure you download and read the **General Build Guide**.

It contains all the information you need for a successful outcome.



Schematic + BOM

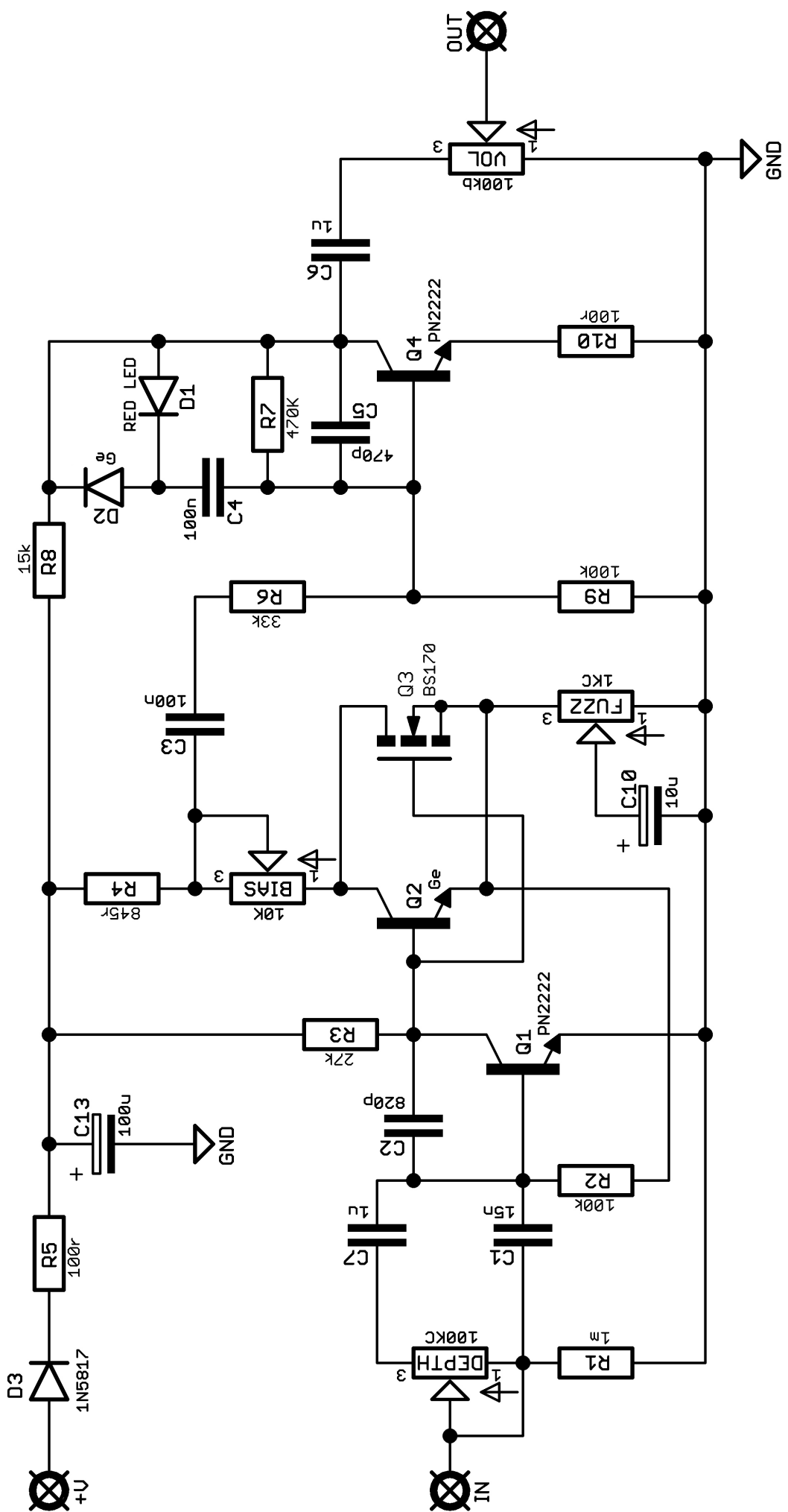


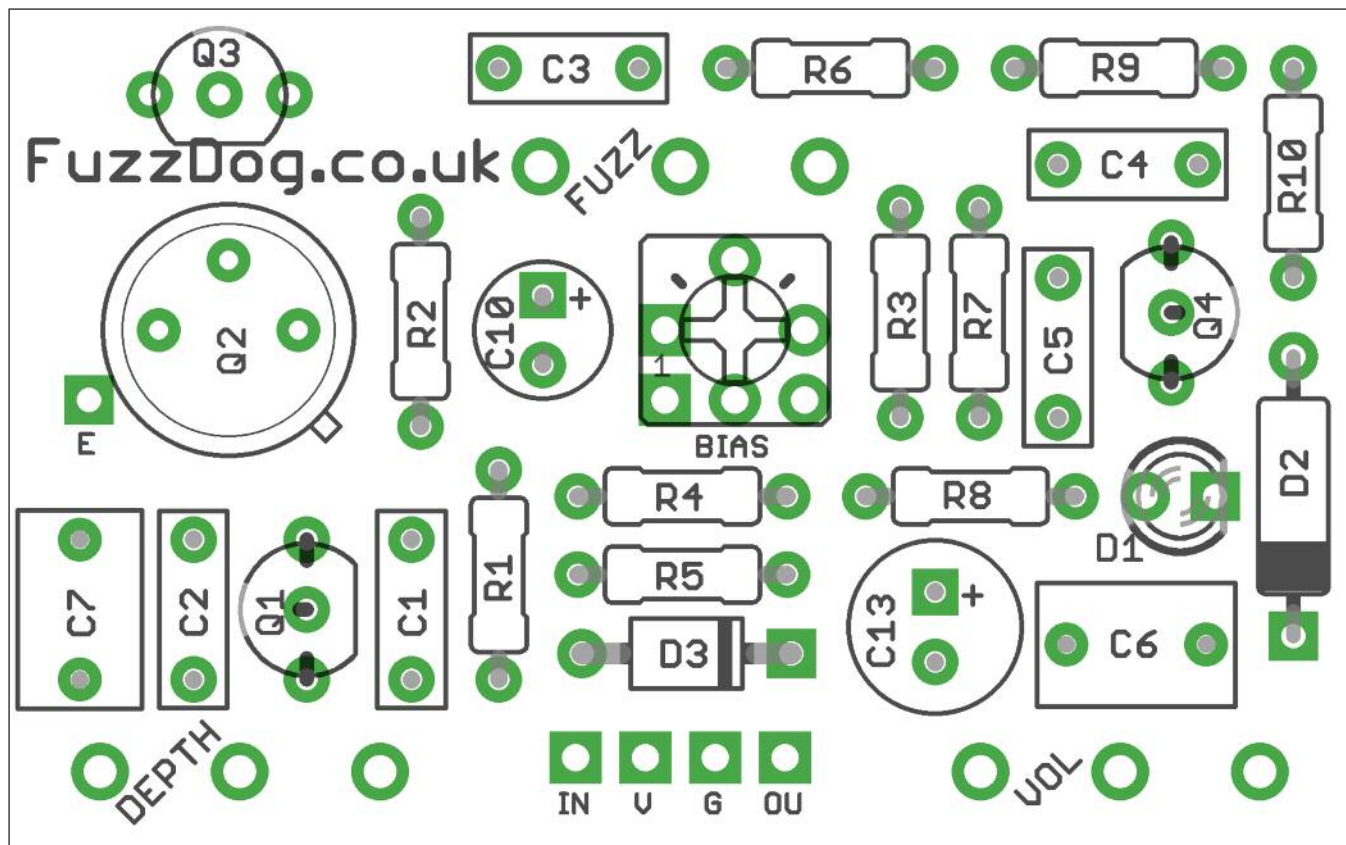
R1	1M	C1	15n	D1	3mm Red LED
R2	100K	C2	820p	D2	Germanium
R3	27K	C3	100n	D3	1N5817
R4	820R	C4	100n		
R5	100R	C5	470p	Q1	PN2222*
R6	33K	C6	1u	Q2	Germanium**
R7	470K	C7	1u	Q3	BS170
R8	15K	C10	10u elec	Q4	PN2222
R9	100K	C13	100u elec		
R10	100R			BIAS	10K Trimmer

DEP	100KC
FUZZ	1KC
VOL	100KB

*2N2219A in the original, but these are just a 2N2222 in a larger package, and PN2222 are a 2N2222 - too. We've A-B'd them - they sound identical.

**NPN with low-medium hFE. We used 2N1302 at 50hFE and it sounds immense.





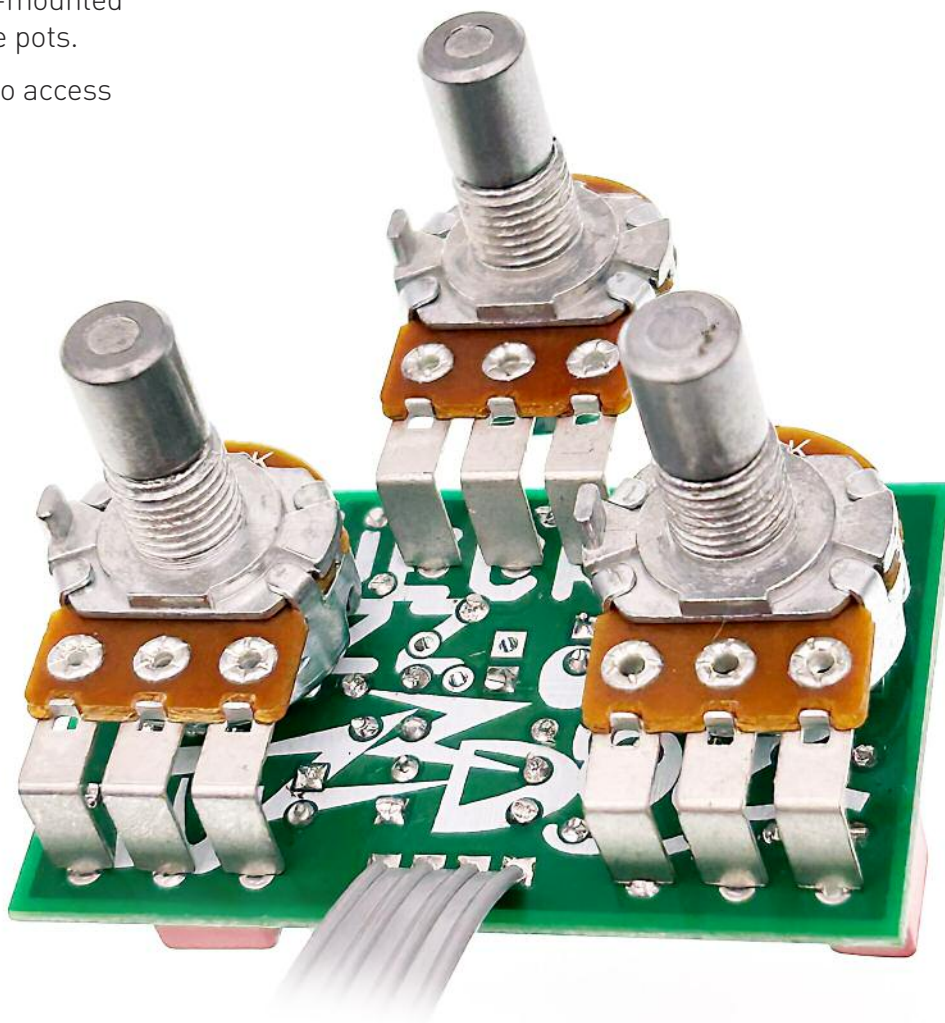
Snap the small metal tag off the pots so they can be mounted flush in the box.

You should solder all other board-mounted components before you solder the pots.

Once they're in place you'll have no access to much of the board.

BIAS

There's no magic number - twiddle it until it sounds great.



Drilling template

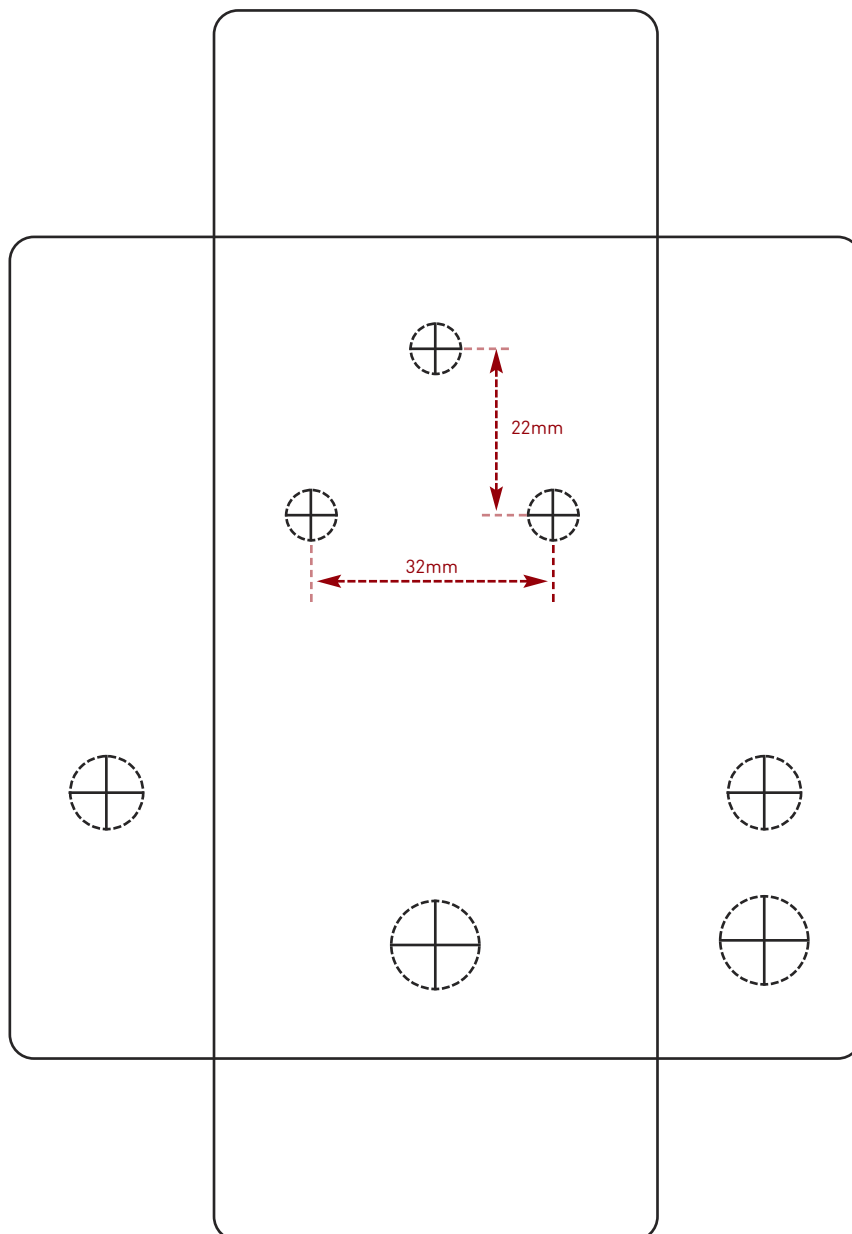
Hammond 1590B - 60 x 111 x 31mm

Drill sizes listed are minimum.

It's a good idea to add 1mm to anything mounted on the PCB that'll poke through the front of the enclosure.

Drill sizes:

Pots	7mm
Jacks	10mm
Footswitch	12mm
DC Socket	12mm
Toggle switches	6mm
Rotary switches	10mm



This template is a rough guide only. You should ensure correct marking of your enclosure before drilling. You use this template at your own risk.

Pedal Parts Ltd can accept no responsibility for incorrect drilling of enclosures.

FuzzDog.co.uk