

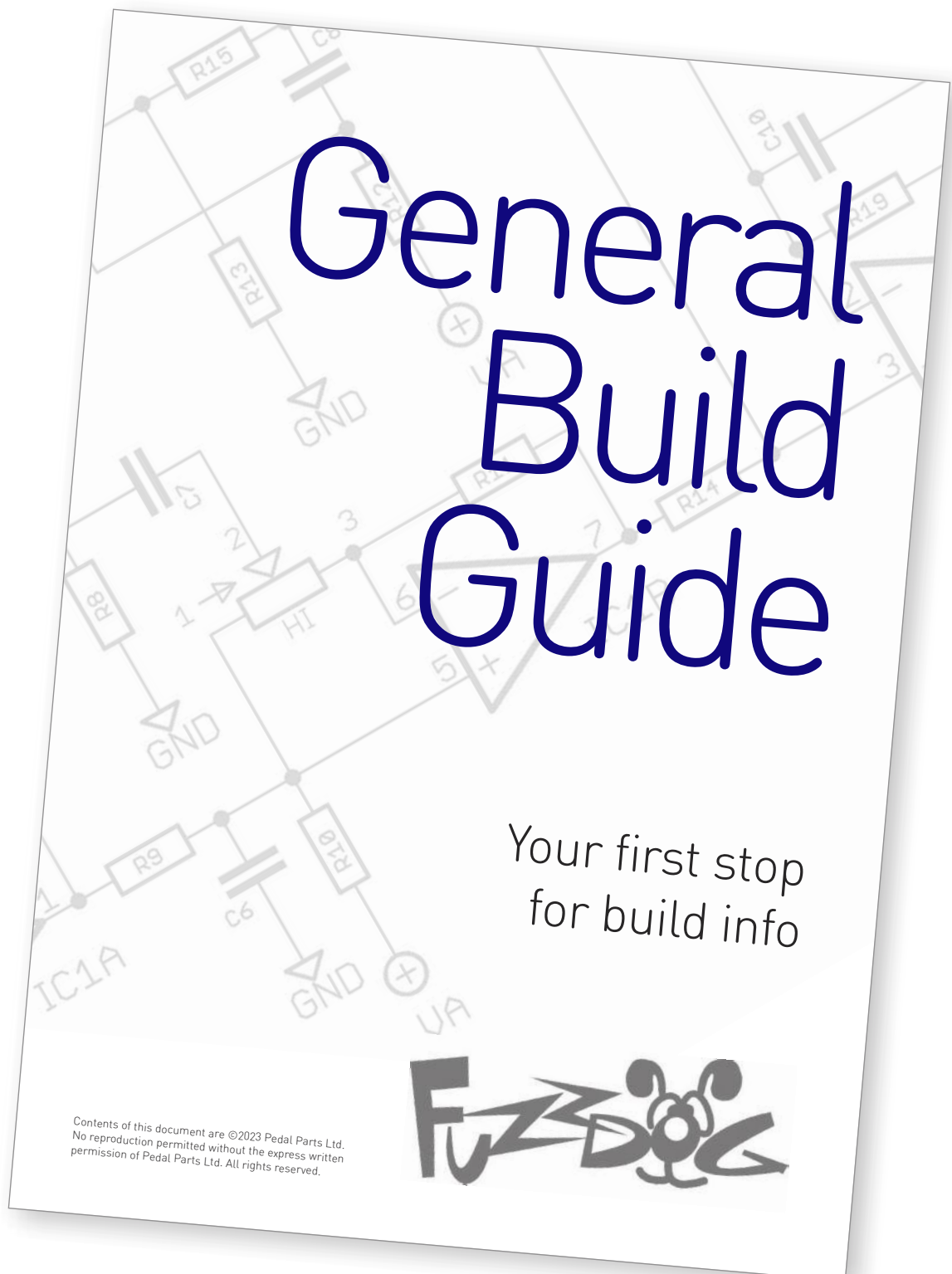
Little Pecker

A modern take on the
Vox Repeat Percussion

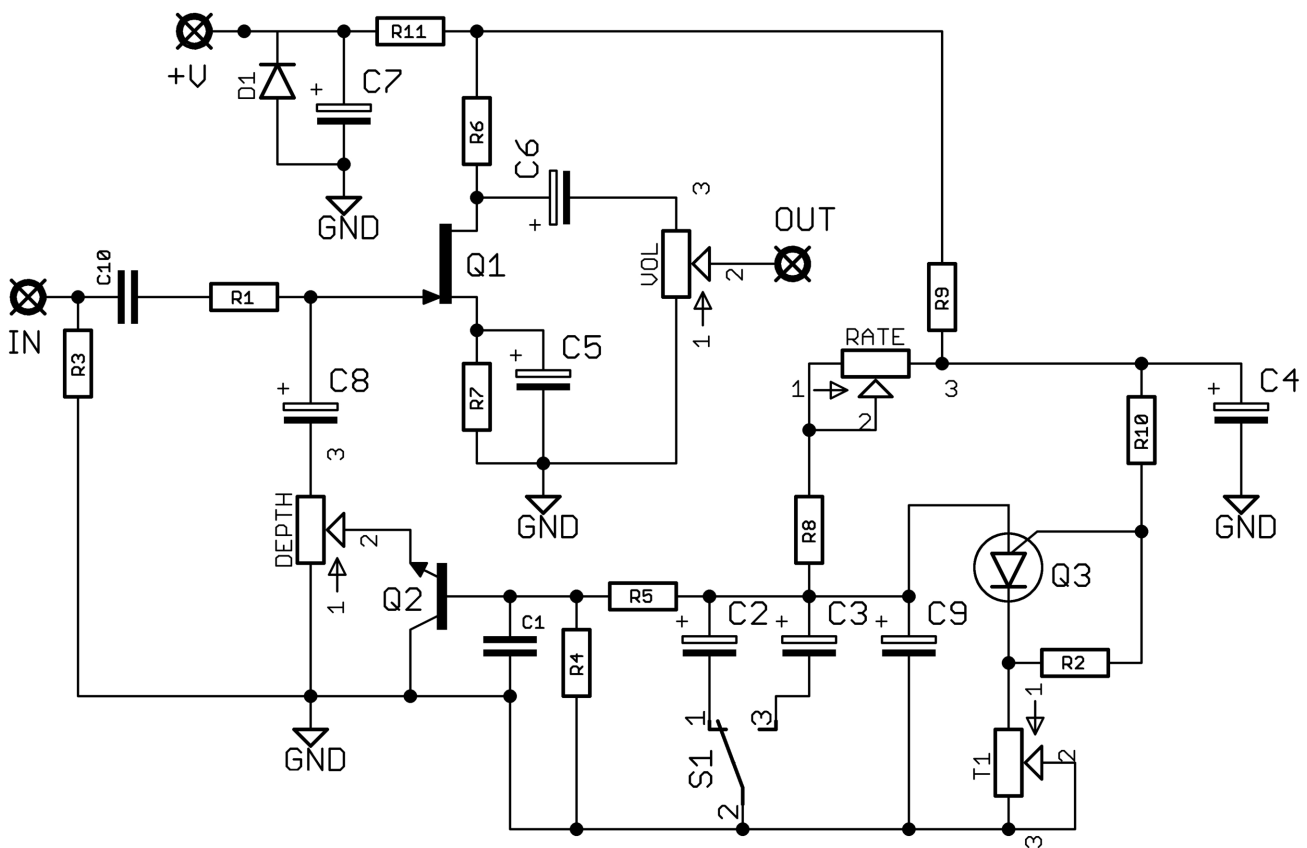


Before you dig in, ensure you download and read the **General Build Guide**.

It contains all the information you need for a successful outcome.



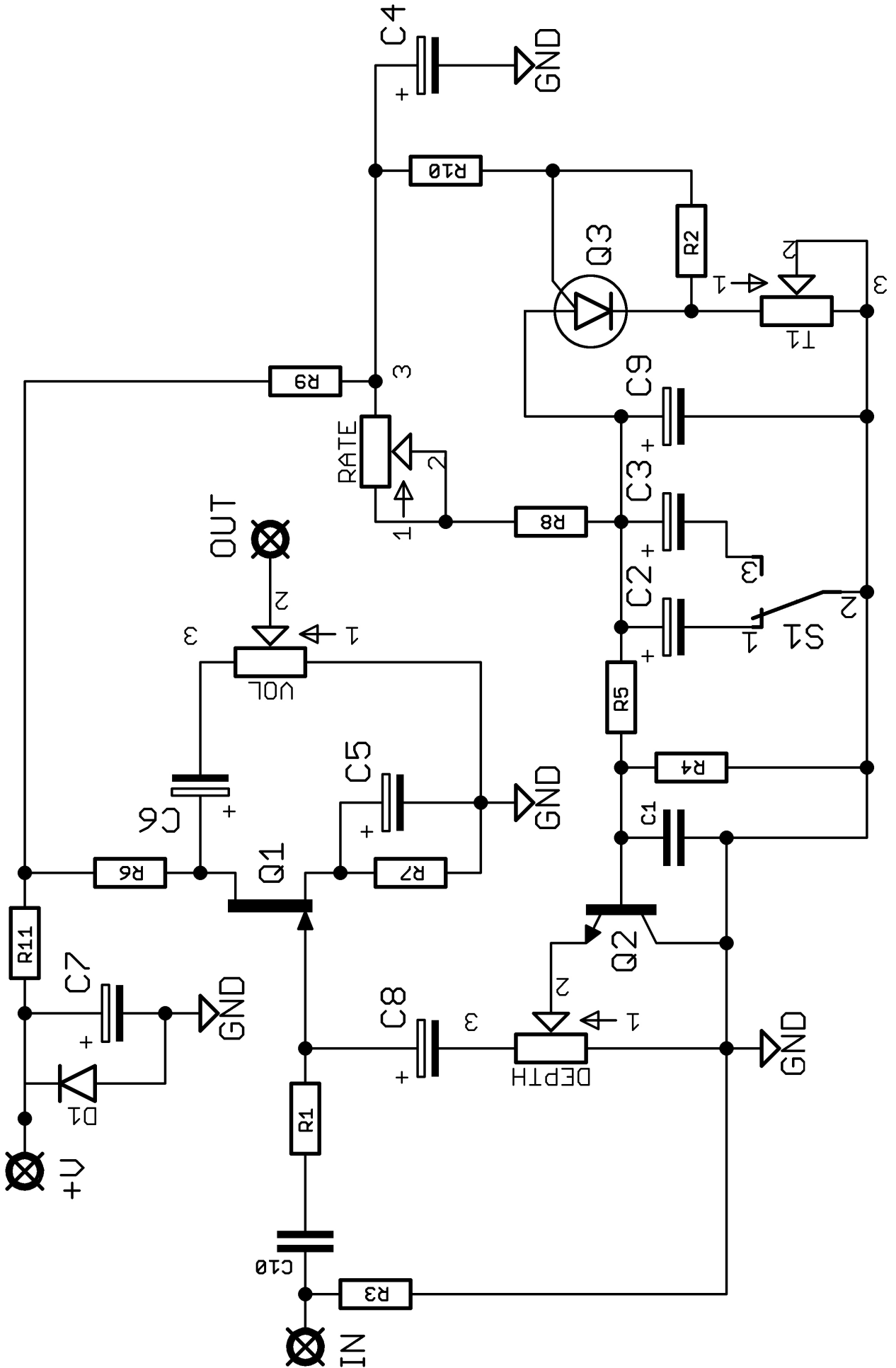
Schematic + BOM

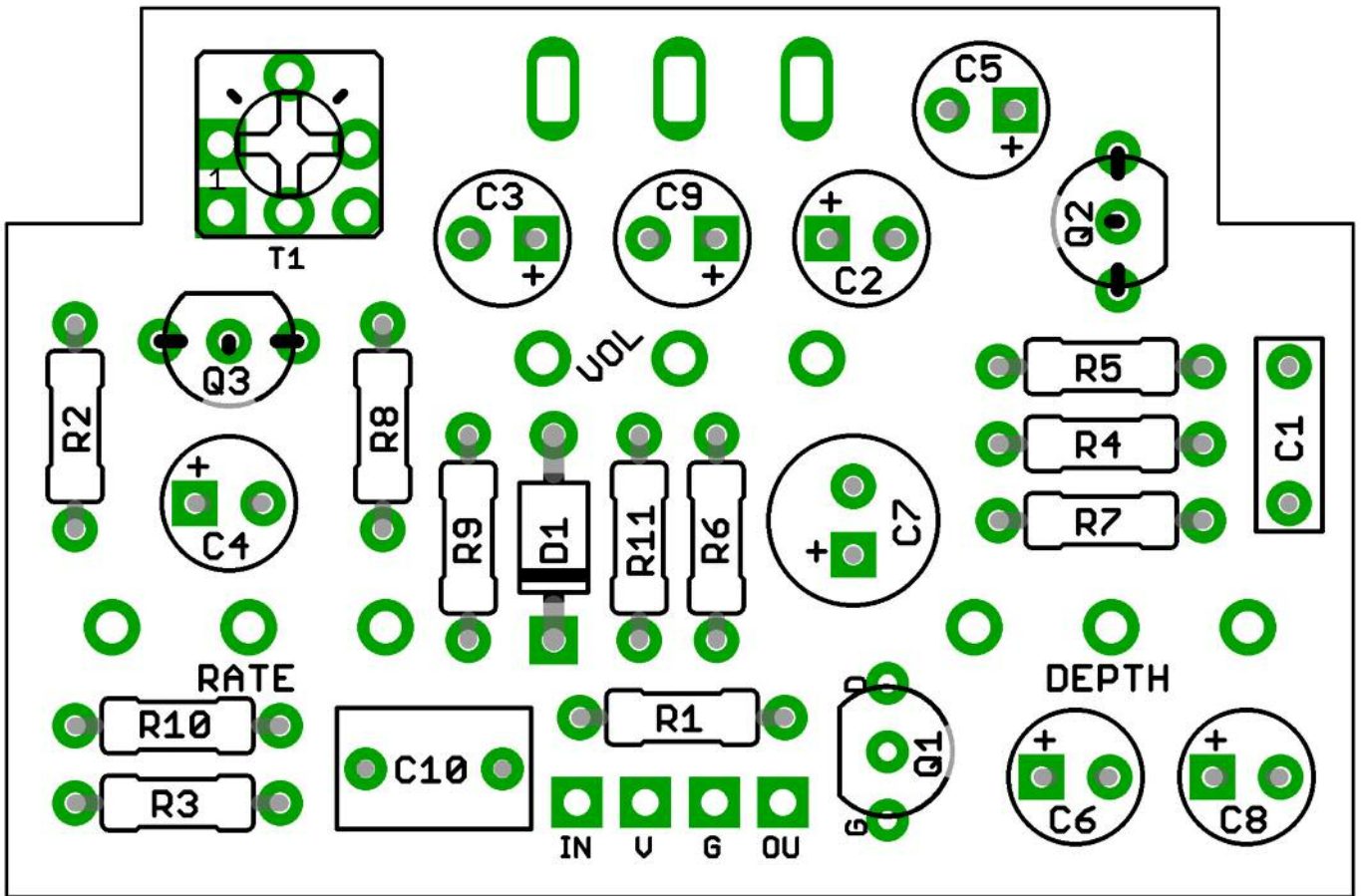


R1	47K	C1	220n	D1	1N4001
R2	2K2	C2	10u elec	Q1	2N5457*
R3	1M	C3	2u2 elec	Q2	2N5089
R4	47K	C4	100u elec	Q3	2N6027
R5	220K	C5	4u7 elec	DEPTH	10KB
R6	22K	C6	2u2 elec	VOL	100KB
R7	12K	C7	100u elec	RATE	100KB
R8	27K	C8	1u elec	T1	220R**
R9	470R	C9	1u elec	S1	SPDT ON-OFF-ON
R10	2K2	C10	1u		
R11	470R				

*Originally PF5102 but these are now obsolete.

**You can use a bigger value but it'll make your adjustment less precise unless you're using a multi-turn trimmer.





The power and signal pads match up to the pads on our Direct Connect daughterboards.

Be very careful when soldering the diode and transistors. They're very sensitive to heat. You should use some kind of heat sink (crocodile clip or reverse action tweezers) on each leg as you solder them. Keep exposure to heat to a minimum (under 2 seconds).

Snap the small metal tag off the pots so they can be mounted flush in the box.

You should solder all other board-mounted components before you solder the pots. Once they're in place you'll have no access to much of the board. Make sure your pots all line up nicely.

Adjust T1 until you get maximum effect without an audible tick. This is a fixed 100R resistor in the original, so somewhere around half way on the trimmer should be sweet.

You can alter the circuit to a two-position toggle with only two different speed ranges if you prefer. Use an ON-ON switch and omit C9.



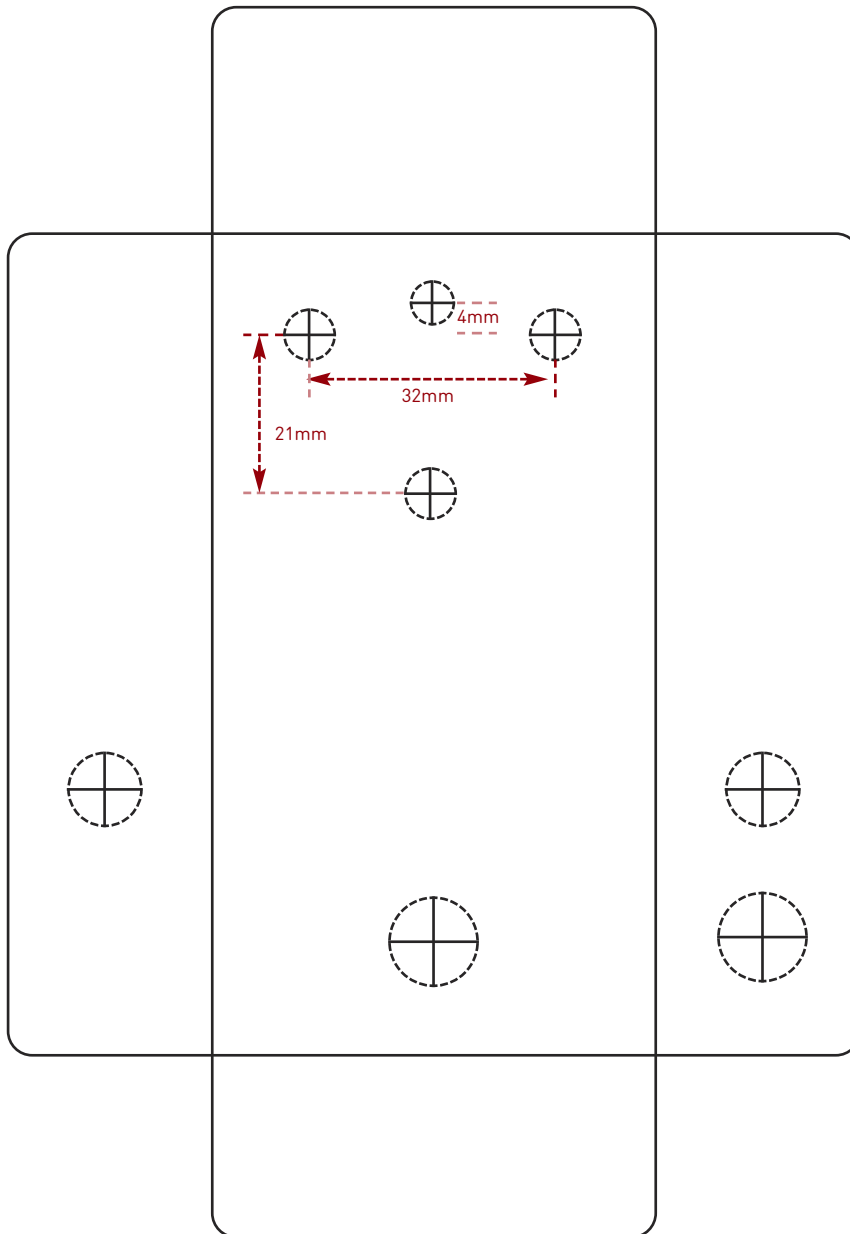
Drilling template

Hammond 1590B
60 x 111 x 31mm

Recommended drill sizes:

Pots	7mm
Jacks	10mm
Footswitch	12mm
DC Socket	12mm
Toggle Switches	6mm

It's a good idea to drill the pot and toggle switch holes 1mm bigger if you're board-mounting them.
Wiggle room = good!



This template is a rough guide only. You should ensure correct marking of your enclosure before drilling. You use this template at your own risk. Pedal Parts Ltd can accept no responsibility for incorrect drilling of enclosures.

FuzzDog.co.uk