

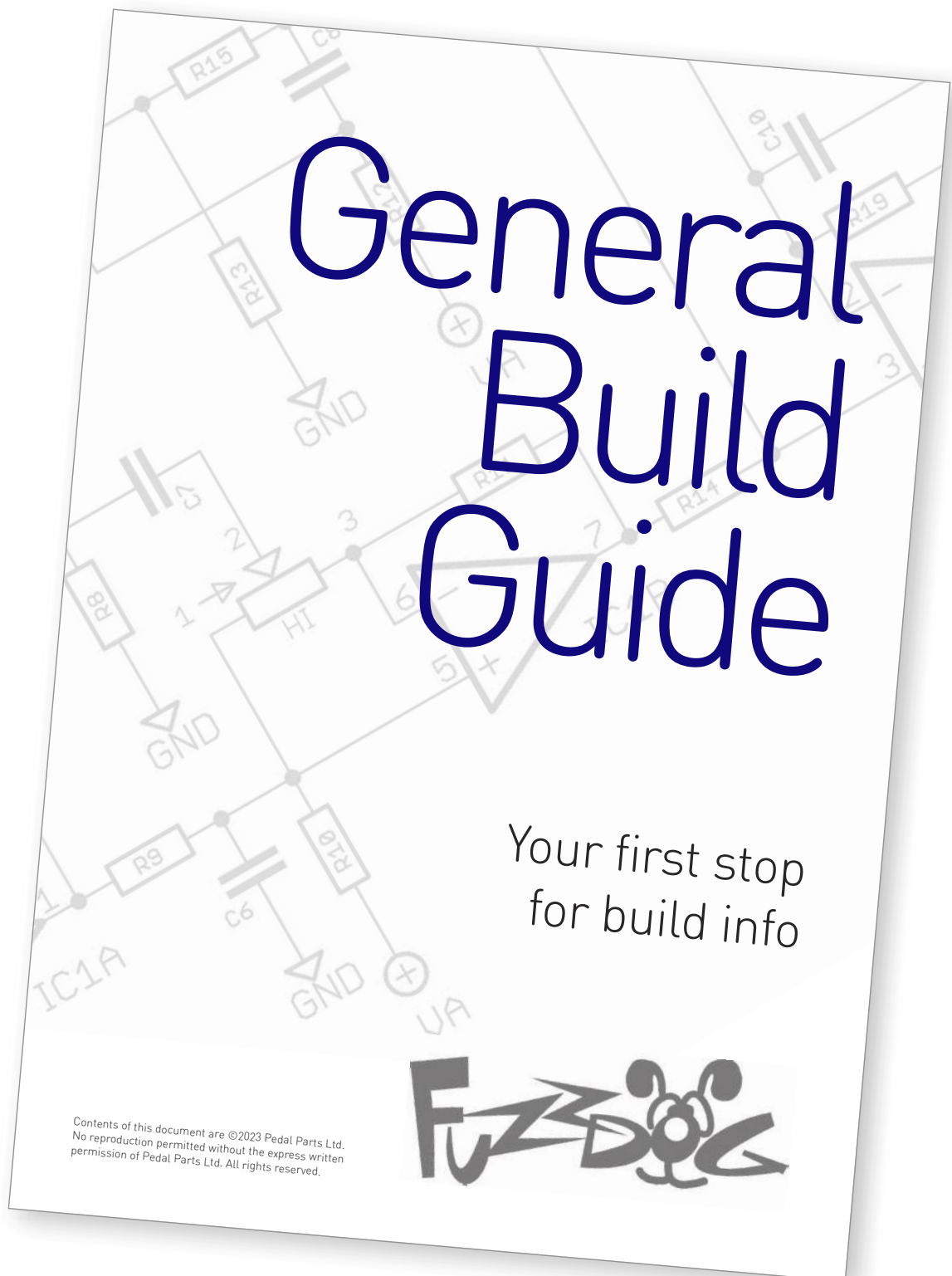
Little Boy Blues

Highly tweakable
Screamer-based blues box

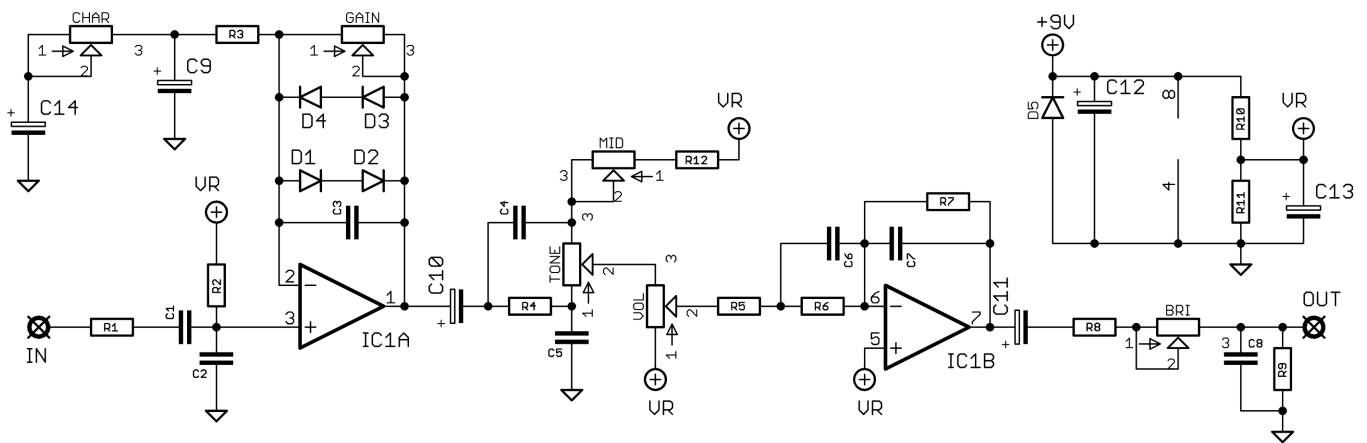


Before you dig in, ensure you download and read the **General Build Guide**.

It contains all the information you need for a successful outcome.



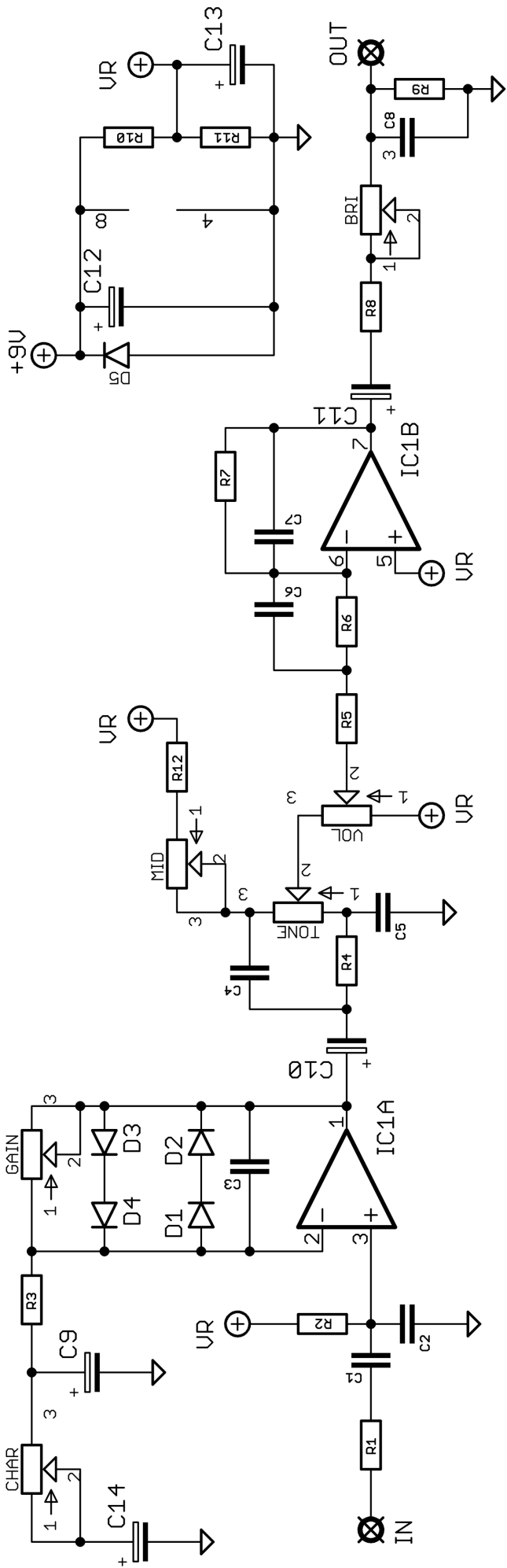
Schematic + BOM

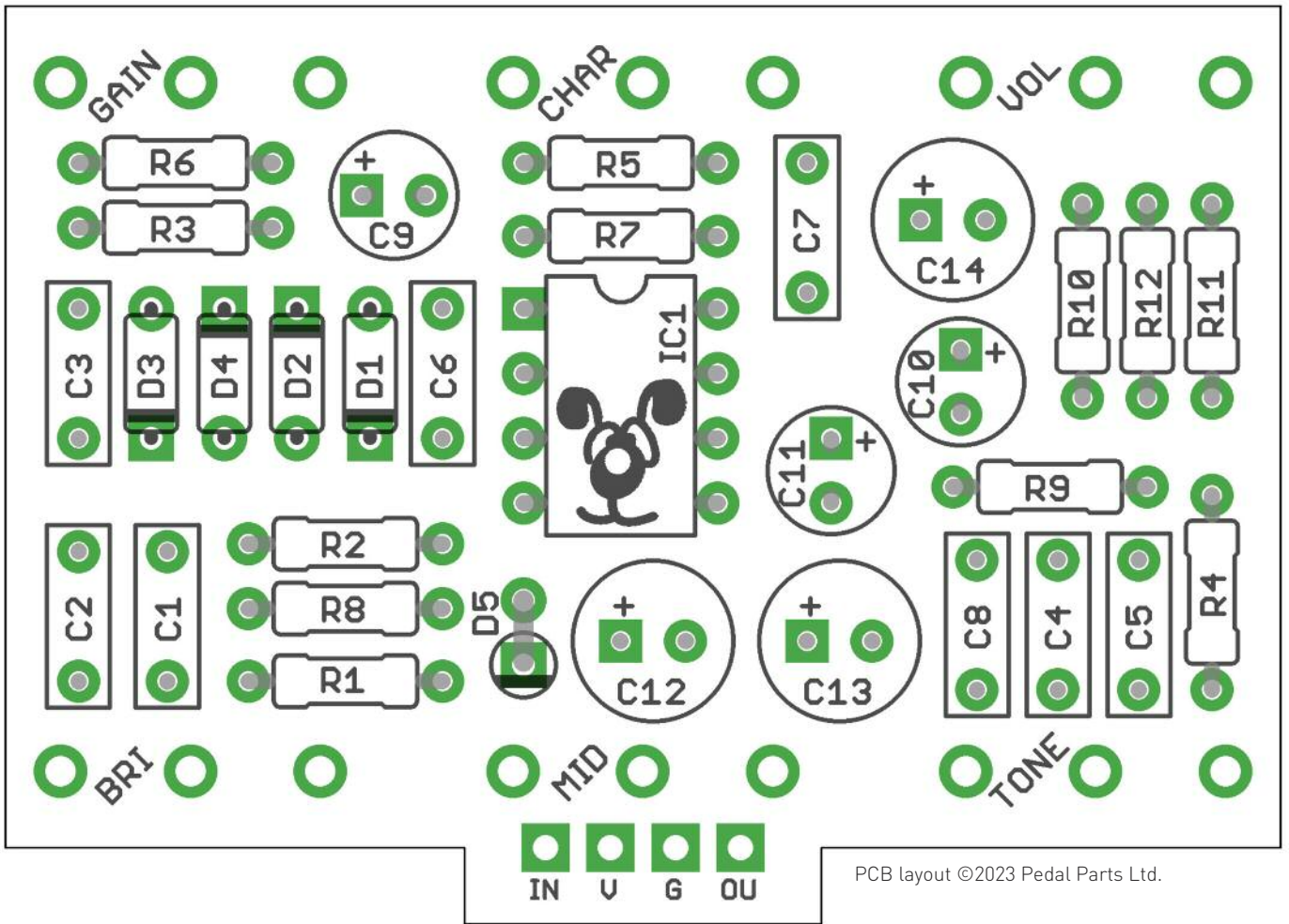


R1	1K
R2	1M
R3	150R
R4	22K
R5	220K
R6	1M
R7	1M
R8	470R
R9	100K
R10	22K
R11	22K
R12	2K2

C1	22n
C2	1n
C3	220p
C4	22n
C5	22n
C6	220p
C7	4p7
C8	22n
C9	1u5 elec
C10	1u elec
C11	1u elec
C12	100u elec
C13	100u elec
C14	100u elec

IC1	4558
D1-4	1N4148
D5	1N4001
BRI	10KC
CHAR	1KC
GAIN	100KA
MID	25KA
TONE	100KB
VOL	100KA





Snap the small metal tag off the pots so they can be mounted flush in the box.

You should solder all other board-mounted components before you solder the pots.

Once they're in place you'll have no access to much of the board.



Drilling template

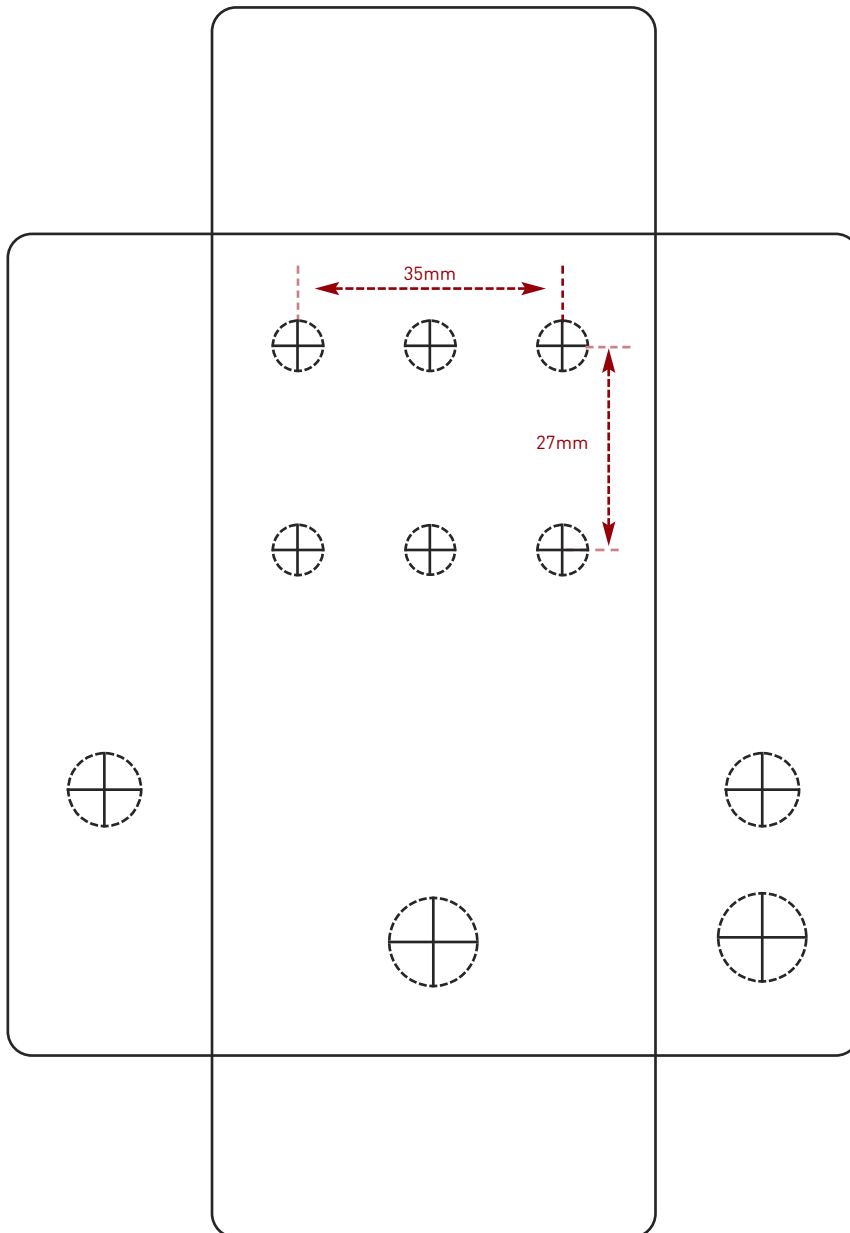
Hammond 1590B - 60 x 111 x 31mm

Drill sizes listed are minimum.

It's a good idea to add 1mm to anything mounted on the PCB that'll poke through the front of the enclosure.

Drill sizes:

Pots	7mm
Jacks	10mm
Footswitch	12mm
DC Socket	12mm
Toggle switches	6mm
Rotary switches	10mm



This template is a rough guide only. You should ensure correct marking of your enclosure before drilling. You use this template at your own risk.

Pedal Parts Ltd can accept no responsibility for incorrect drilling of enclosures.

FuzzDog.co.uk