

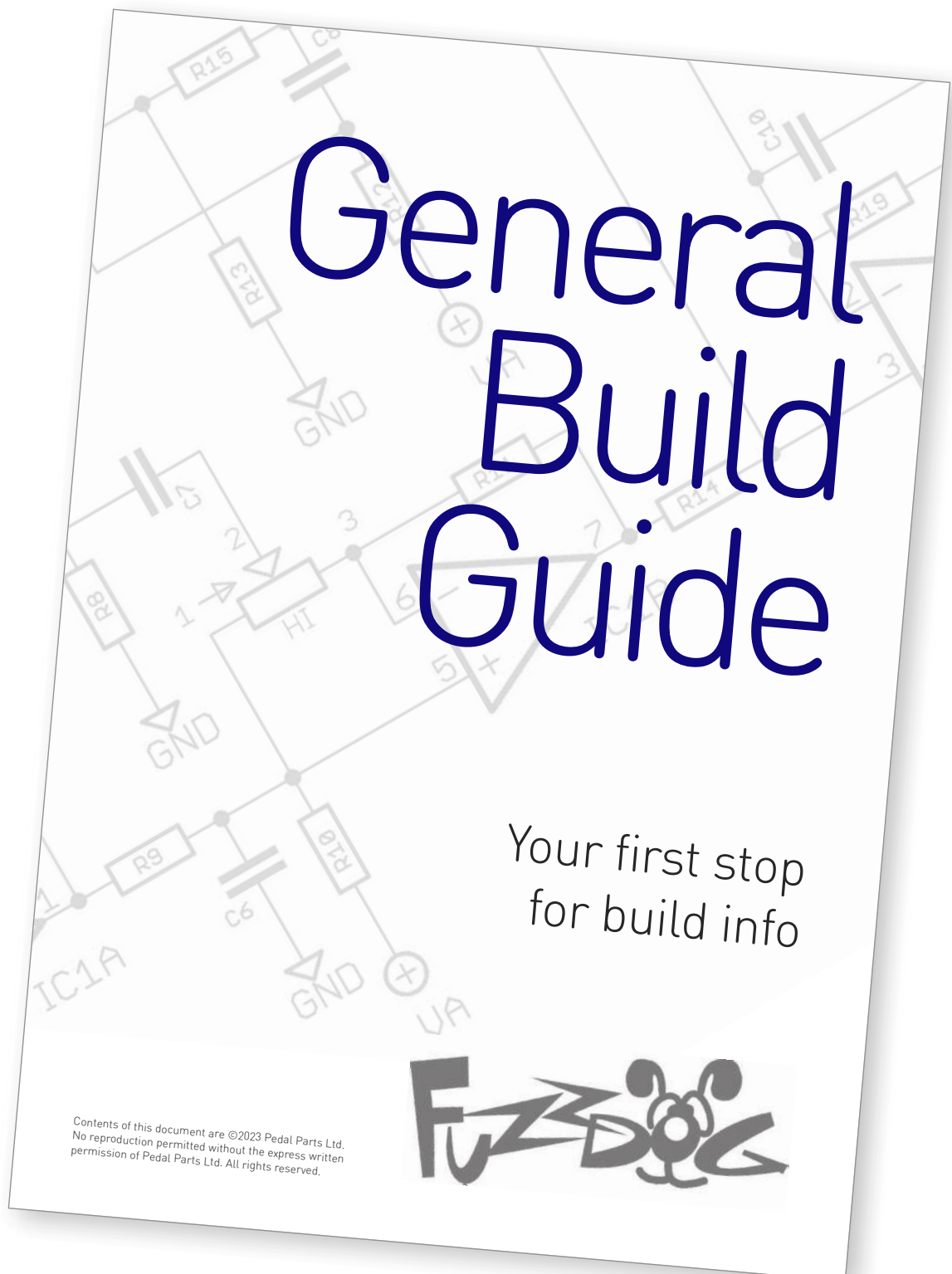
Lightning Strikes

Filthy Distortion/Fuzz

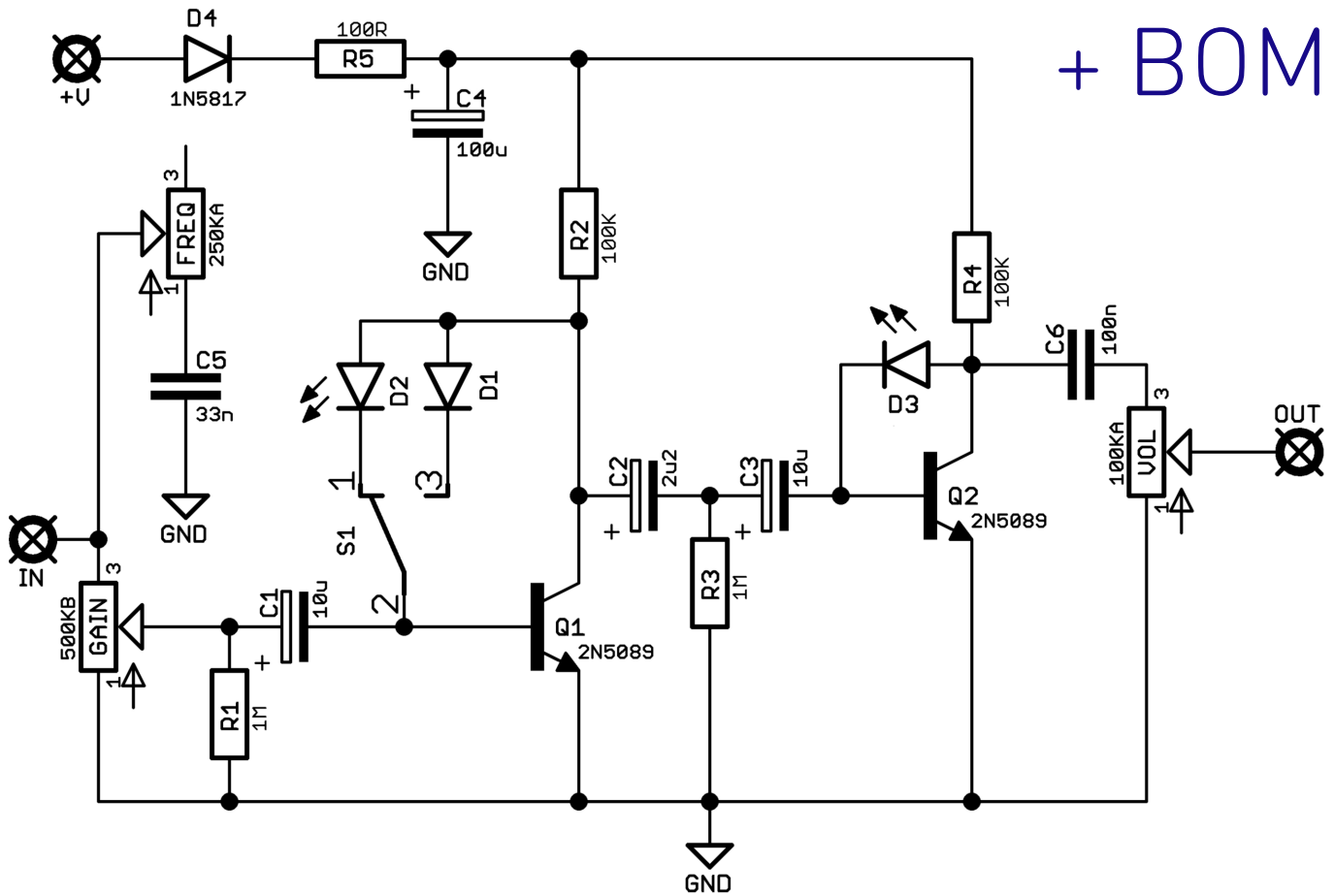


Before you dig in, ensure you download and read the **General Build Guide**.

It contains all the information you need for a successful outcome.

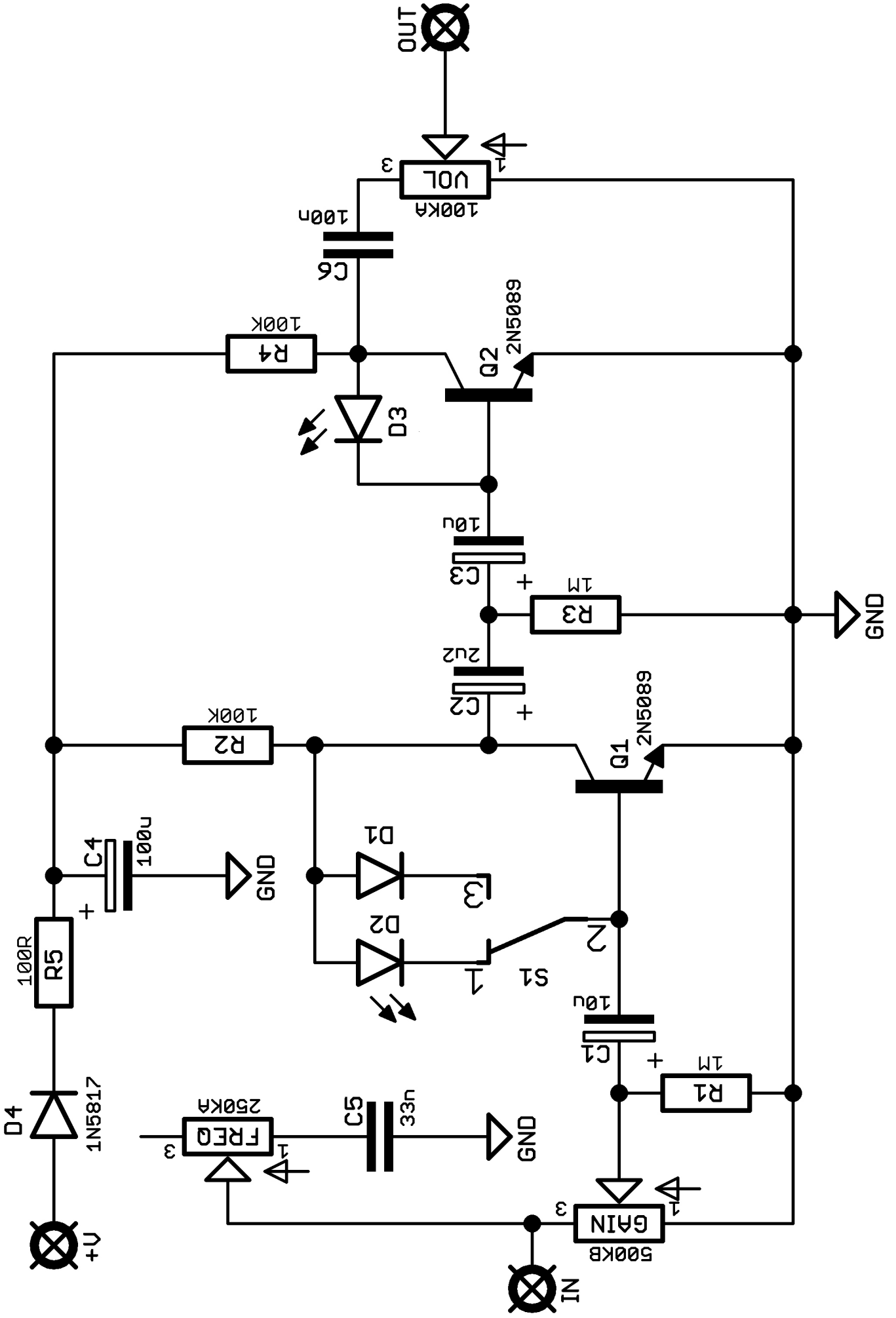


Schematic + BOM

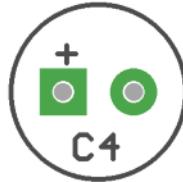
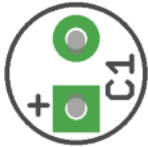


R1	1M	C1	10u elec	D1	Ge/BAT46*
R2	100K	C2	2u2 elec	D2	3mm Red LED
R3	1M	C3	10u elec	D3	3mm Red LED
R4	100K	C4	100u elec	D4	1N5817
R5	100R	C5	33n	FREQ	250KA
Q1-2	2N5089	C6	100n	GAIN	500KB
				VOL	100KA
				S1	SPDT ON-ON

*BAT46 will sound exactly the same as your average germanium diode.



FuzzDog.co.uk



LIGHTNING STRIKES...



Snap the small metal tag off the pots so they can be mounted flush in the box.

You should solder all other board-mounted components before you solder the pots.

Once they're in place you'll have no access to much of the board.

Switch to the right gives you LED clipping.

Drilling template

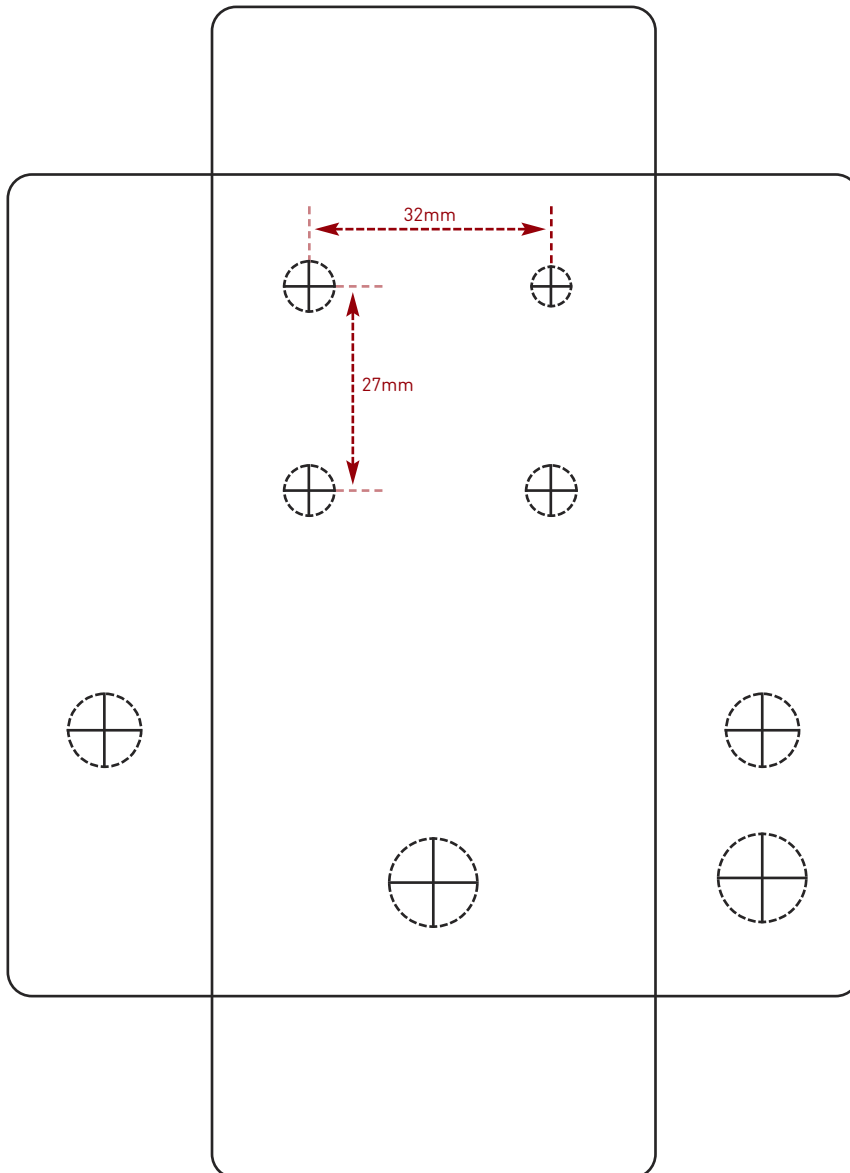
Hammond 1590B - 60 x 111 x 31mm

Drill sizes listed are minimum.

It's a good idea to add 1mm to anything mounted on the PCB that'll poke through the front of the enclosure.

Drill sizes:

Pots	7mm
Jacks	10mm
Footswitch	12mm
DC Socket	12mm
Toggle switches	6mm
Rotary switches	10mm



This template is a rough guide only. You should ensure correct marking of your enclosure before drilling. You use this template at your own risk.

Pedal Parts Ltd can accept no responsibility for incorrect drilling of enclosures.

FuzzDog.co.uk