

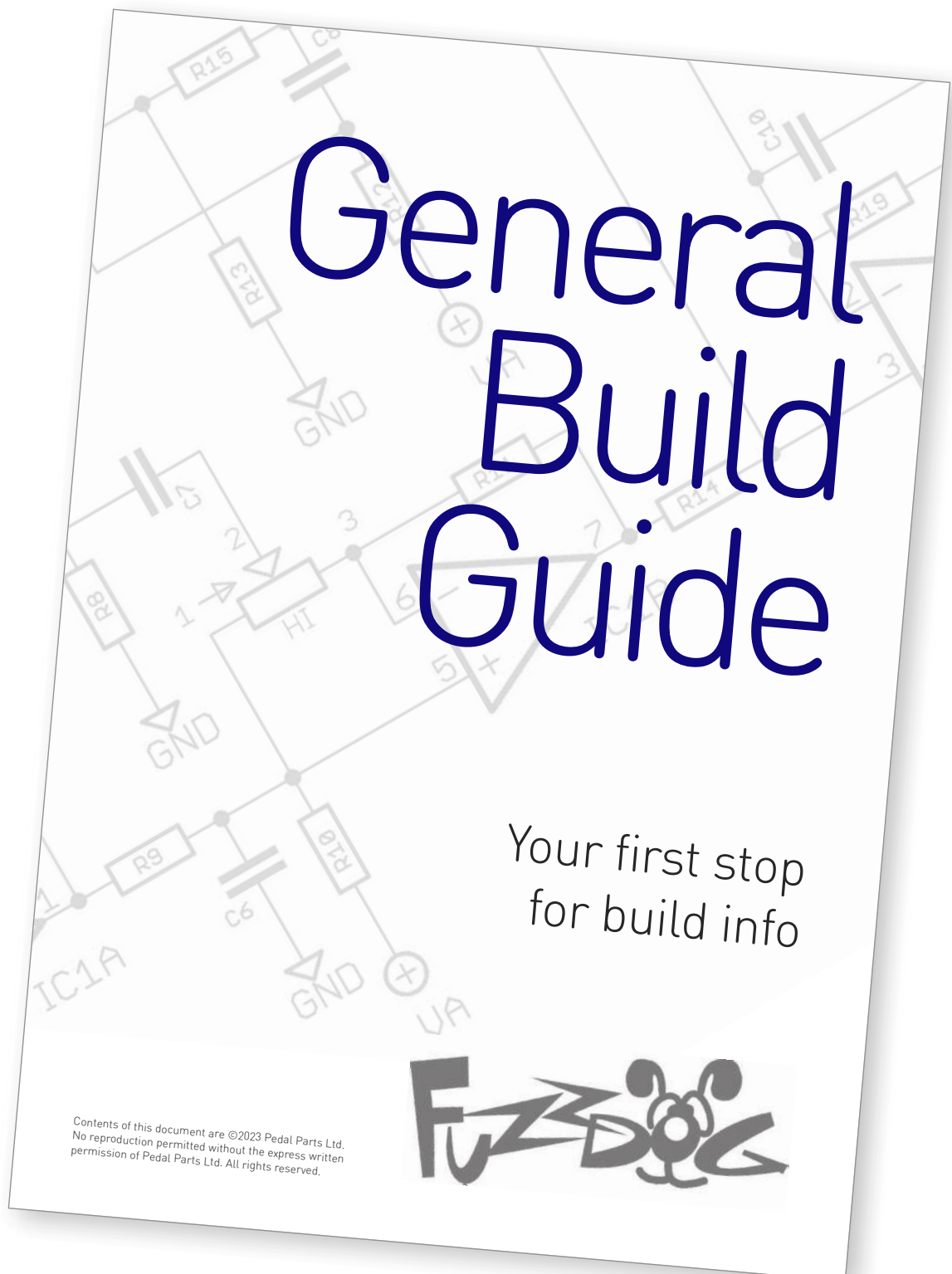
Jailbreak

Wayne Kramer's MC5 tone -
what's not to love?

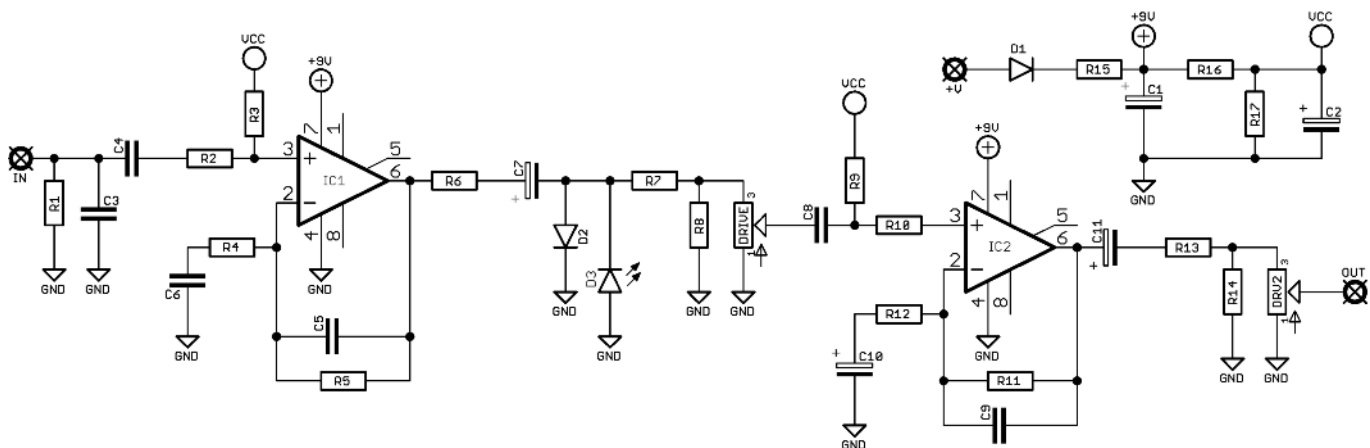


Before you dig in, ensure you download and read the **General Build Guide**.

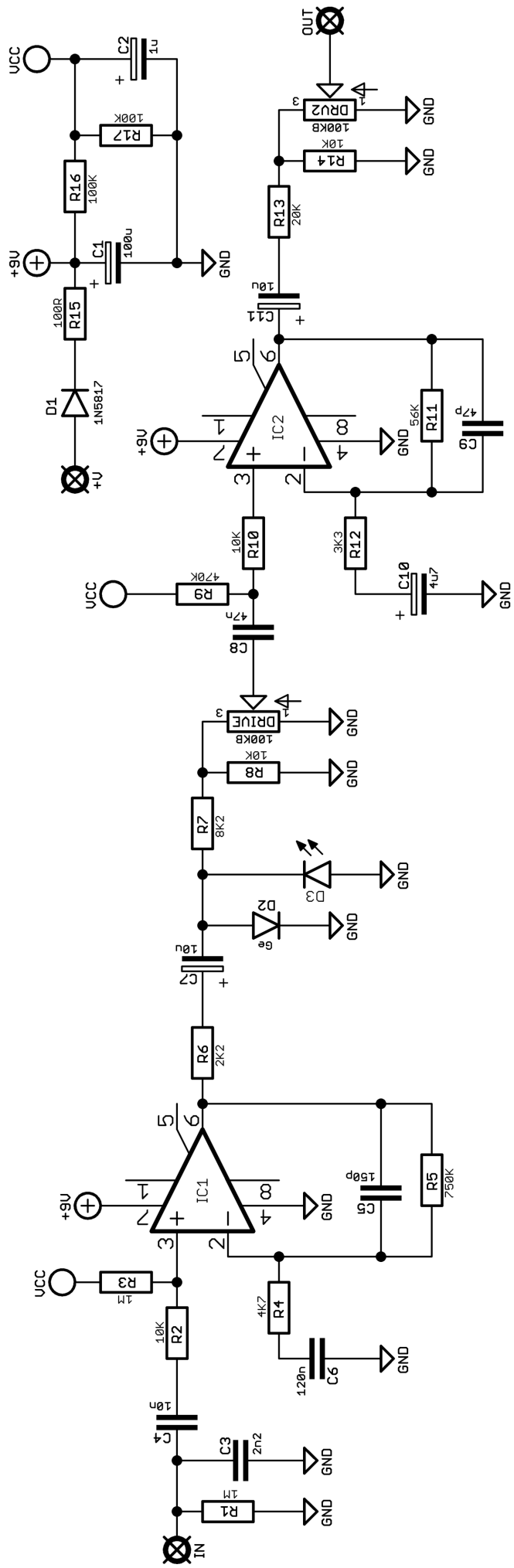
It contains all the information you need for a successful outcome.

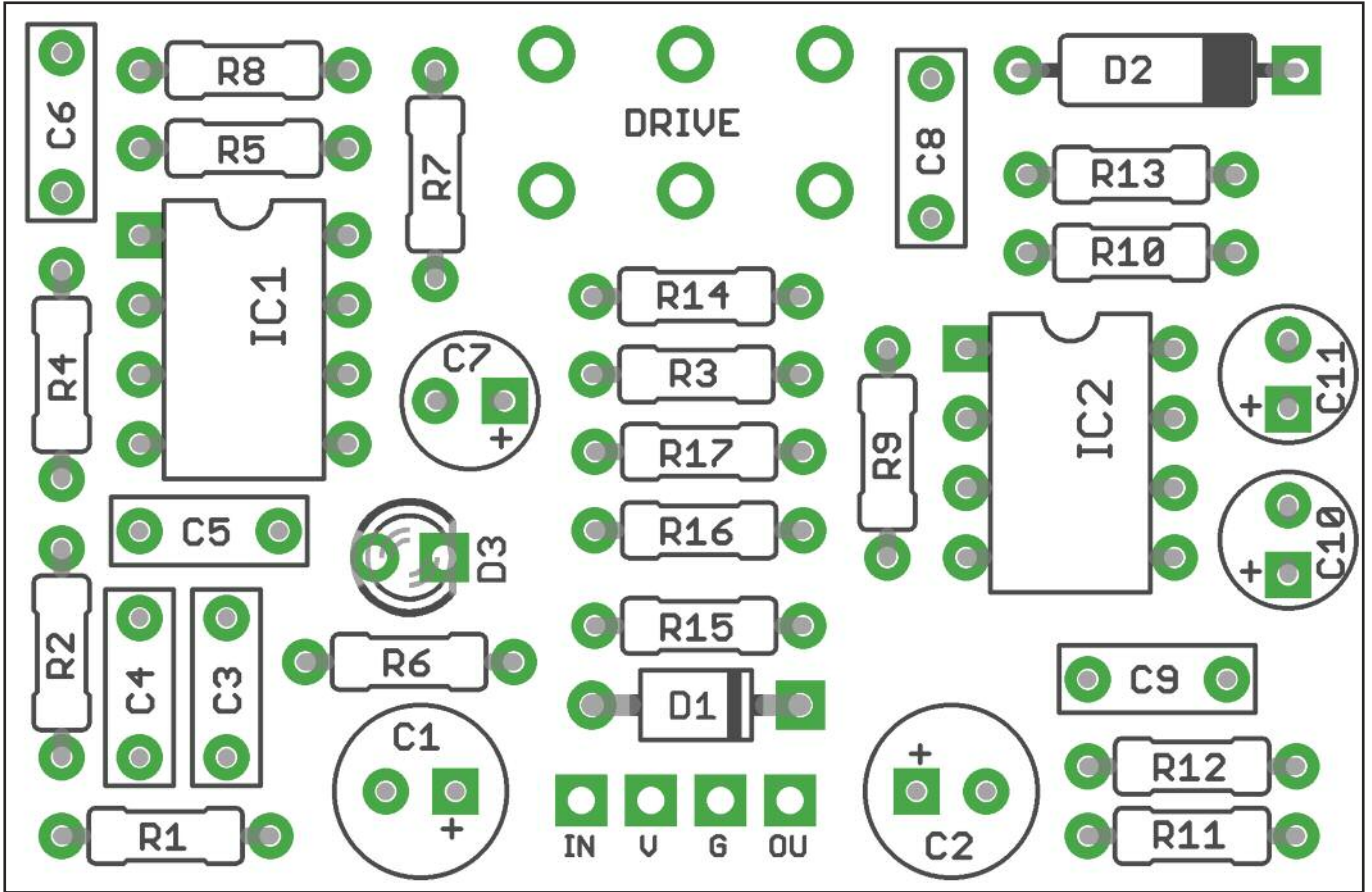


Schematic + BOM



R1	1M	C1	100u elec	D1	1N5817
R2	10K	C2	100u elec	D2	Germanium/BAT46
R3	1M	C3	2n2	D2	3mm red LED
R4	4K7	C4	10n	IC1	LM741
R5	750K	C5	150p	IC3	TL061
R6	2K2	C6	120n	DRIVE	100KB Dual Gang
R7	8K2	C7	10u elec		
R8	10K	C8	47n		
R9	470K	C10	4u7 elec		
R10	10K	C11	10u elec		
R11	56K				
R12	3K3				
R13	20K				
R14	10K				
R15	100R				
R16	100K				
R17	100K				





Snap the small metal tags off the pot so IT can be mounted flush in the box.

Drilling template

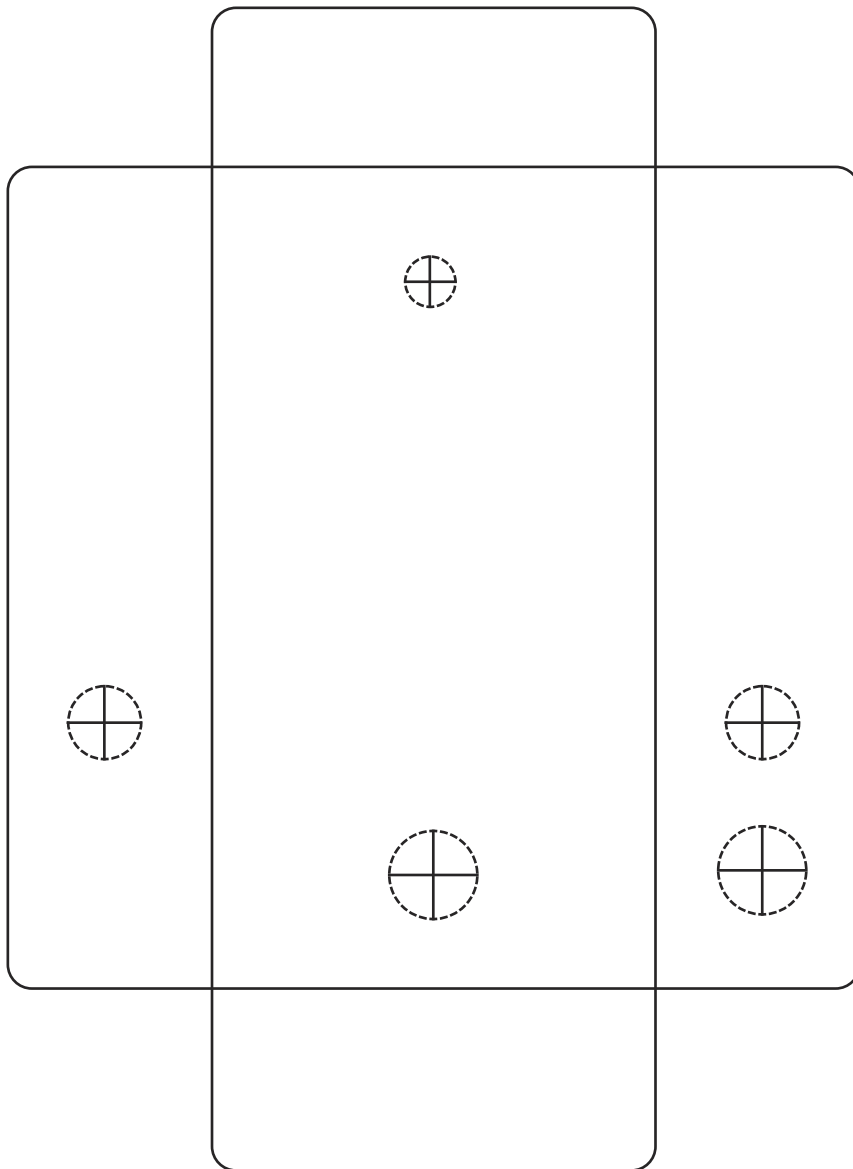
Hammond 1590B - 60 x 111 x 31mm

Drill sizes listed are minimum.

It's a good idea to add 1mm to anything mounted on the PCB that'll poke through the front of the enclosure.

Drill sizes:

Pots	7mm
Jacks	10mm
Footswitch	12mm
DC Socket	12mm
Toggle switches	6mm
Rotary switches	10mm



This template is a rough guide only. You should ensure correct marking of your enclosure before drilling. You use this template at your own risk.

Pedal Parts Ltd can accept no responsibility for incorrect drilling of enclosures.

FuzzDog.co.uk