

# Impetus Drive

Fuzz-Boost-Drive  
box of lovely confusion

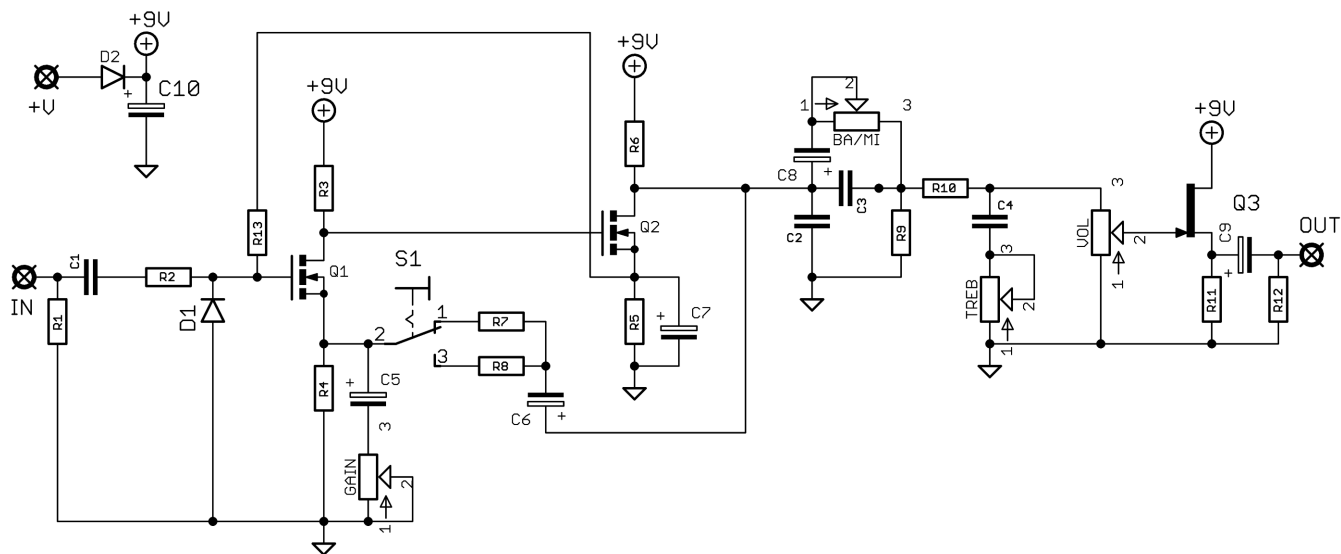


Before you dig in, ensure you download and read the **General Build Guide**.

It contains all the information you need for a successful outcome.



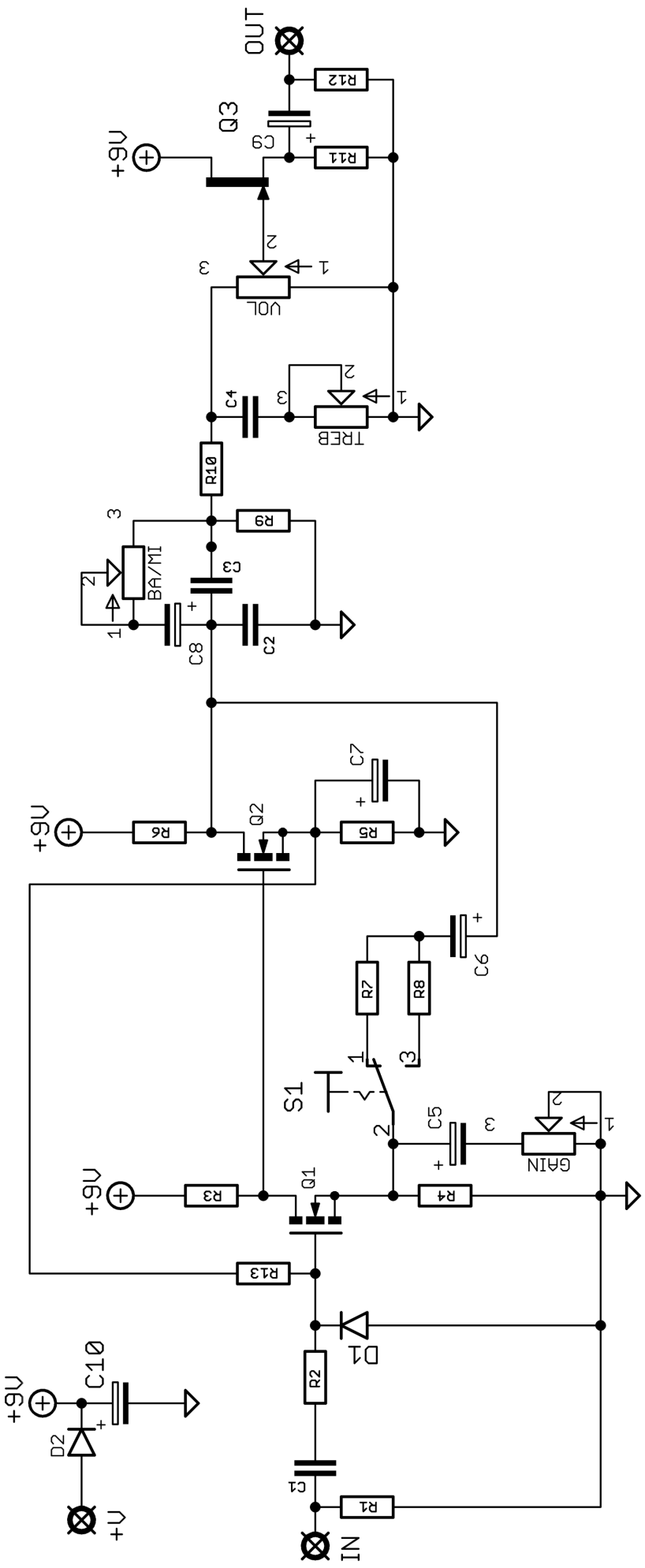
# Schematic + BOM

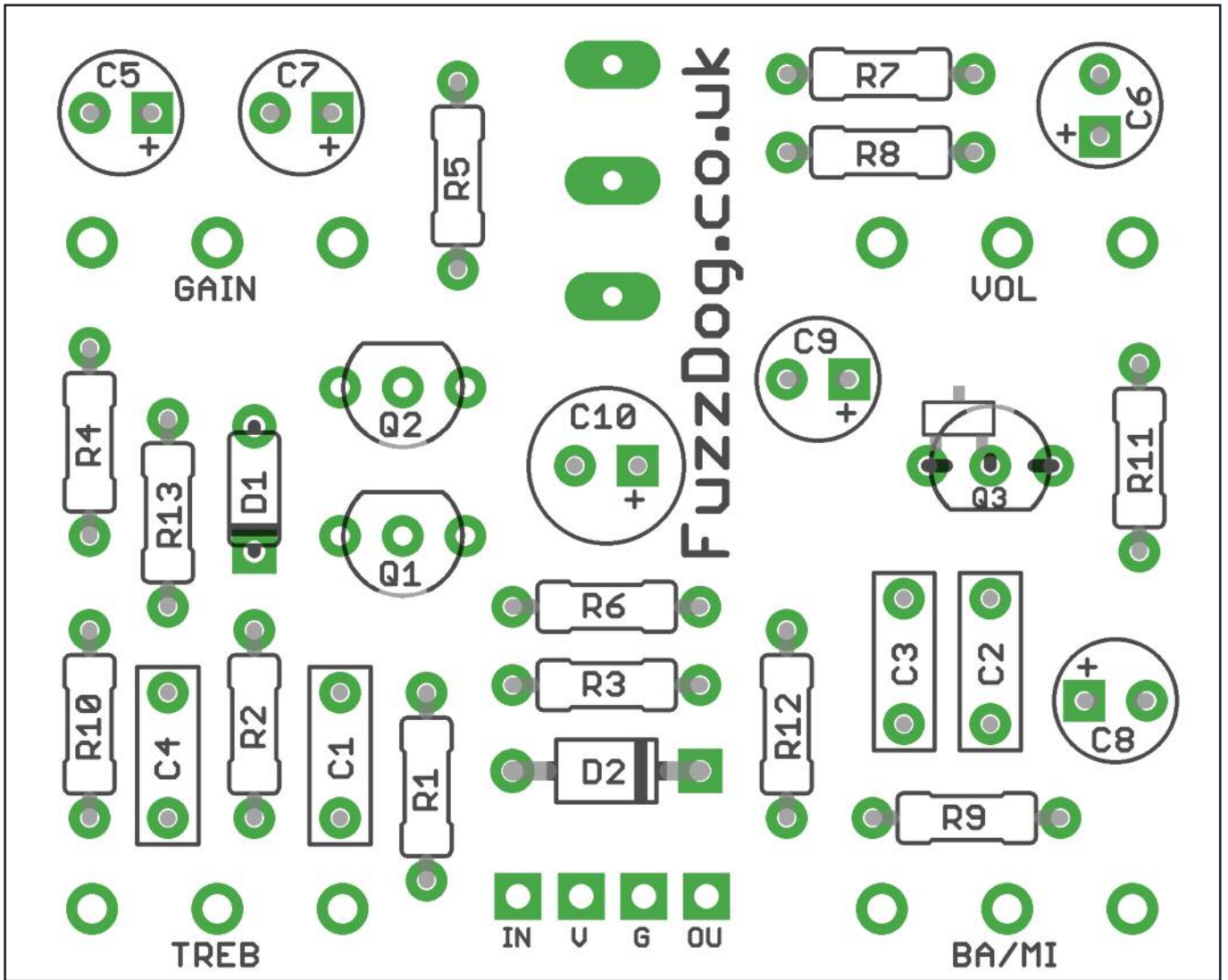


R1	1M
R2	1K
R3	12K
R4	2K2
R5	2K
R6	2K7
R7	10K
R8	330K
R9	33K
R10	10K
R11	10K
R12	1M
R13	120K

C1	220n
C2	33n
C3	1n
C4	22n
C5	22u elec
C6	4u7 elec
C7	22u elec
C8	1u elec
C9	2u2 elec
C10	100u elec

Q1-2	BS170
Q3	2N5457 / MMBF5457
D1	9V1 Zener
D2	1N5817
BA/MI	100KB
GAIN	10KC
TREB	100KA
VOL	100KA
S1	SPDT ON-ON





Snap the small metal tag off the pots so they can be mounted flush in the box.

You should solder all other board-mounted components before you solder the pots.

Q3 can be either through-hole or SMT.

# Drilling template

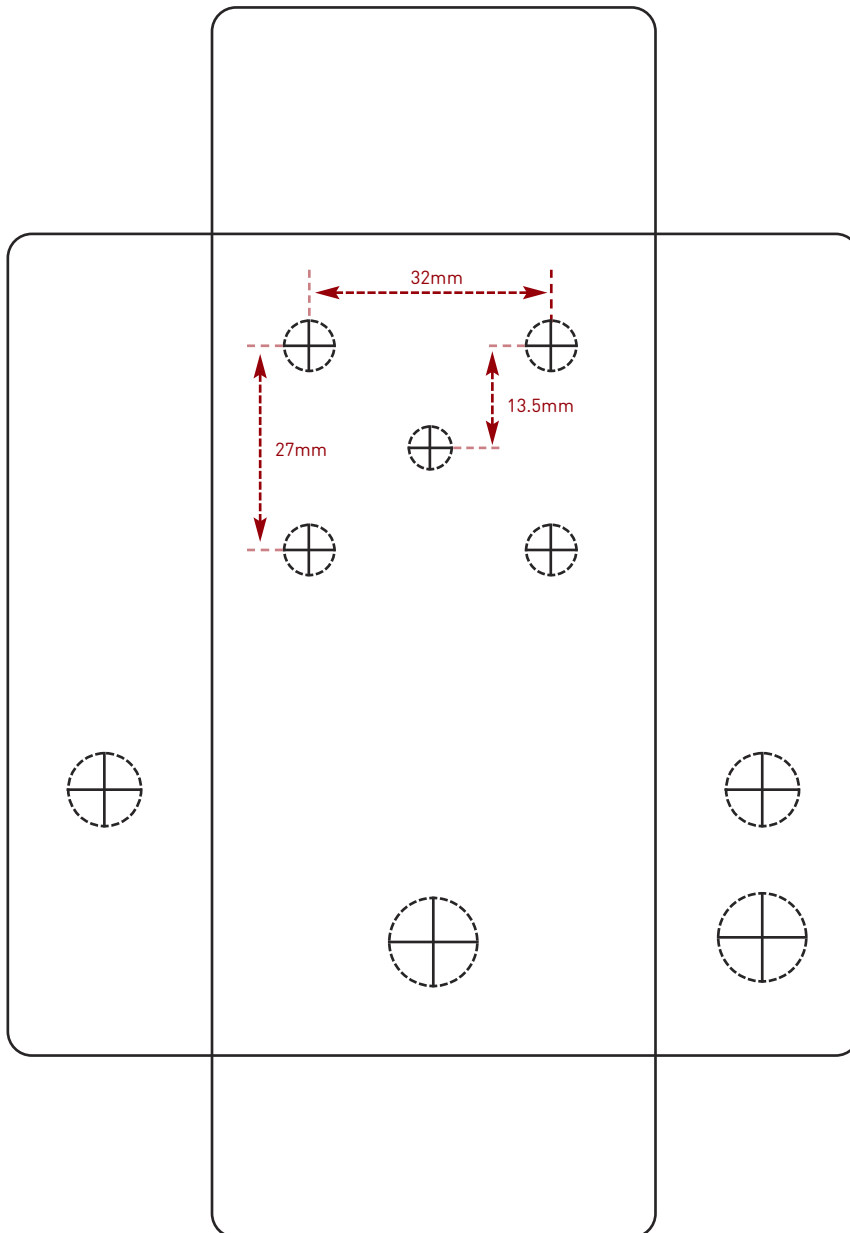
**Hammond 1590B - 60 x 111 x 31mm**

Drill sizes listed are minimum.

It's a good idea to add 1mm to anything mounted on the PCB that'll poke through the front of the enclosure.

Drill sizes:

Pots	7mm
Jacks	10mm
Footswitch	12mm
DC Socket	12mm
Toggle switches	6mm
Rotary switches	10mm



This template is a rough guide only. You should ensure correct marking of your enclosure before drilling. You use this template at your own risk.

Pedal Parts Ltd can accept no responsibility for incorrect drilling of enclosures.

FuzzDog.co.uk