

IfSix

Silicon Fuzz Face-a-like
with handy external bias

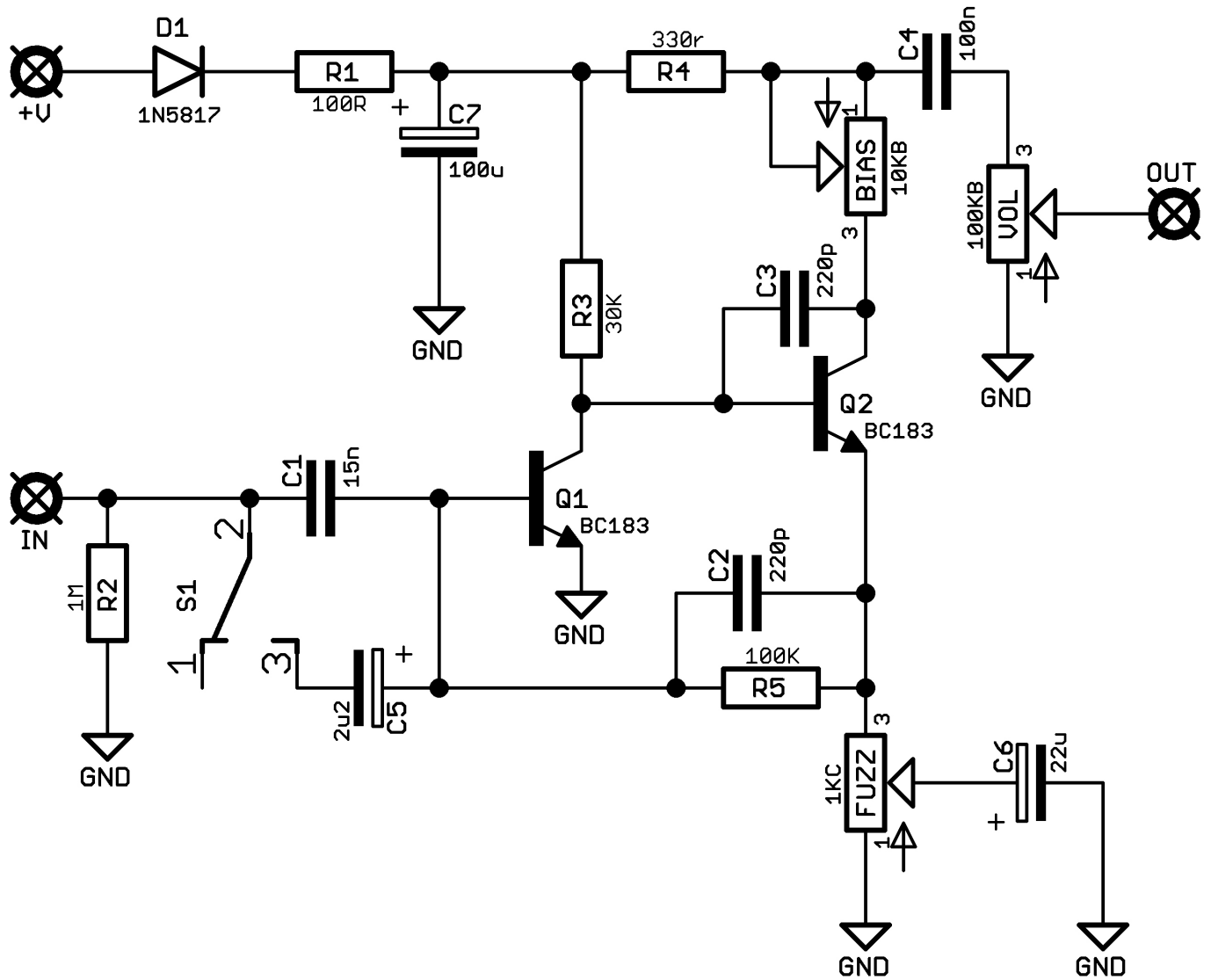


Before you dig in, ensure you download and read the **General Build Guide**.

It contains all the information you need for a successful outcome.



Schematic + BOM



R1 100R

R2 1M

R3 30K

R4 330R

R5 100K

S1 SPDT on-on

C1 15n

C2 220p

C3 220p

C4 100n

C5 2u2 elec

C6 22u elec

C7 100u elec

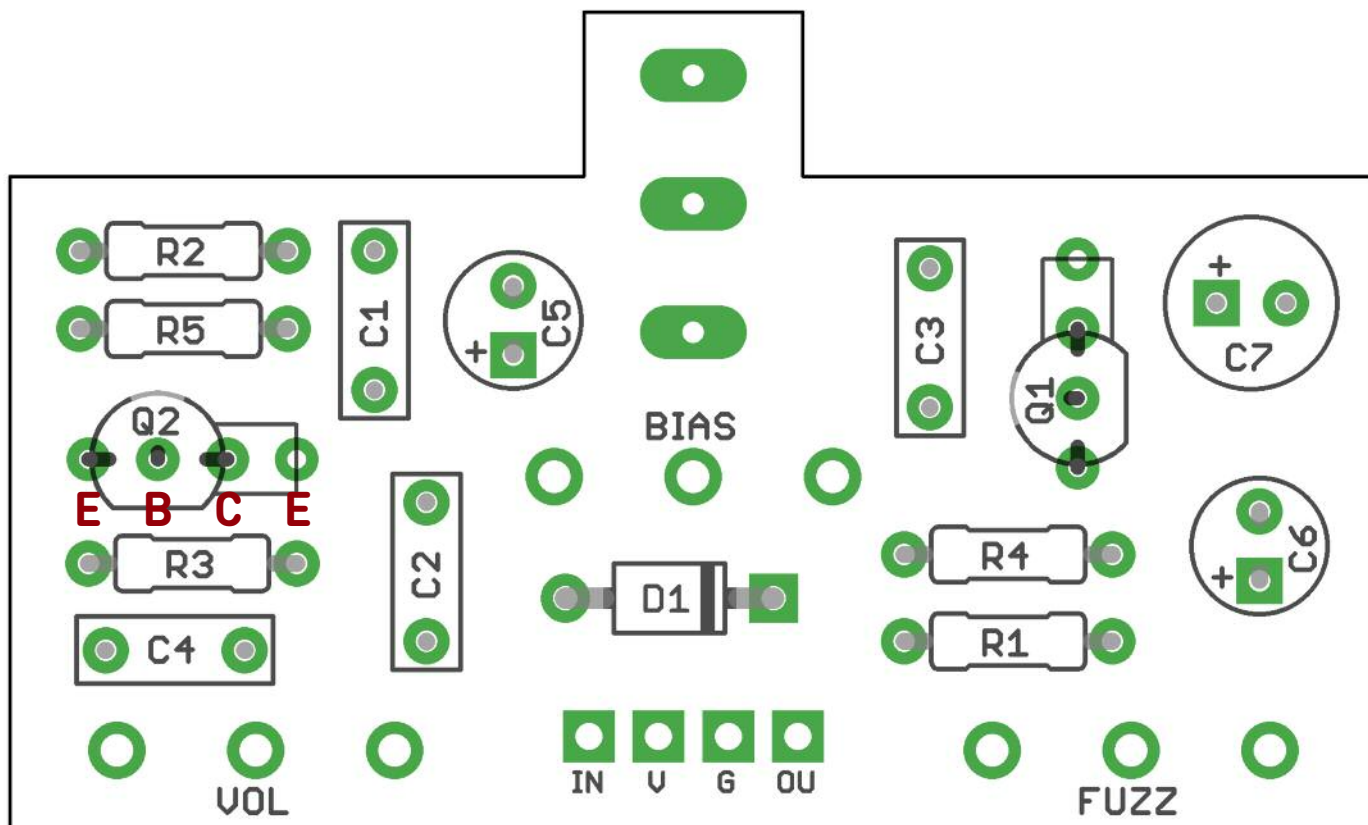
D1 1N5817

Q1-2 BC183

BIAS 10KB

FUZZ 1KC

VOL 100KB



Snap the small metal tag off the pots so they can be mounted flush in the box.

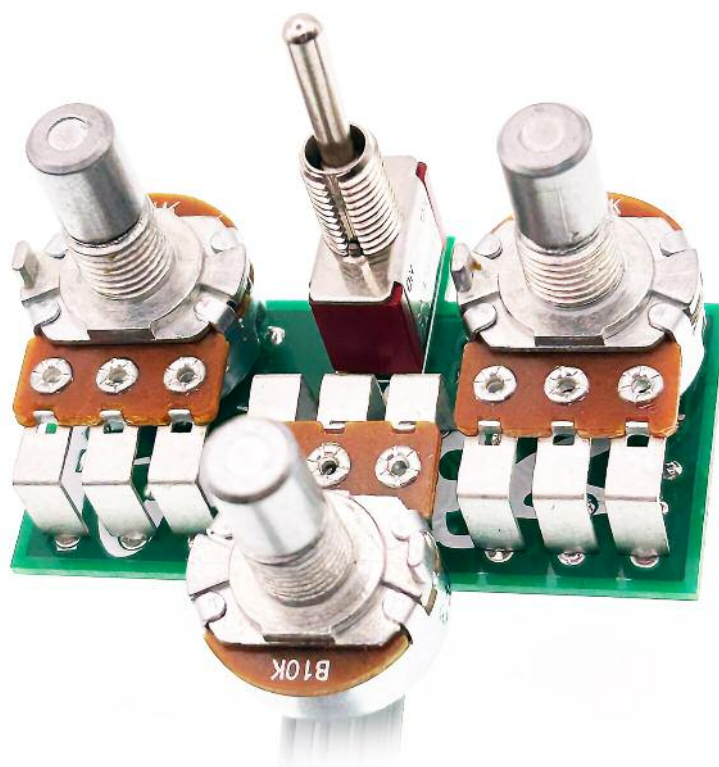
You should solder all other board-mounted components before you solder the pots.

Once they're in place you'll have no access to much of the board.

TRANSISTORS

We've added extra pads on the PCB so you can use a variety of different transistors. Pinout is marked above.

BC183 should be mounted as shown on the cover image, i.e. reversed compared to the silk screen.



Drilling template

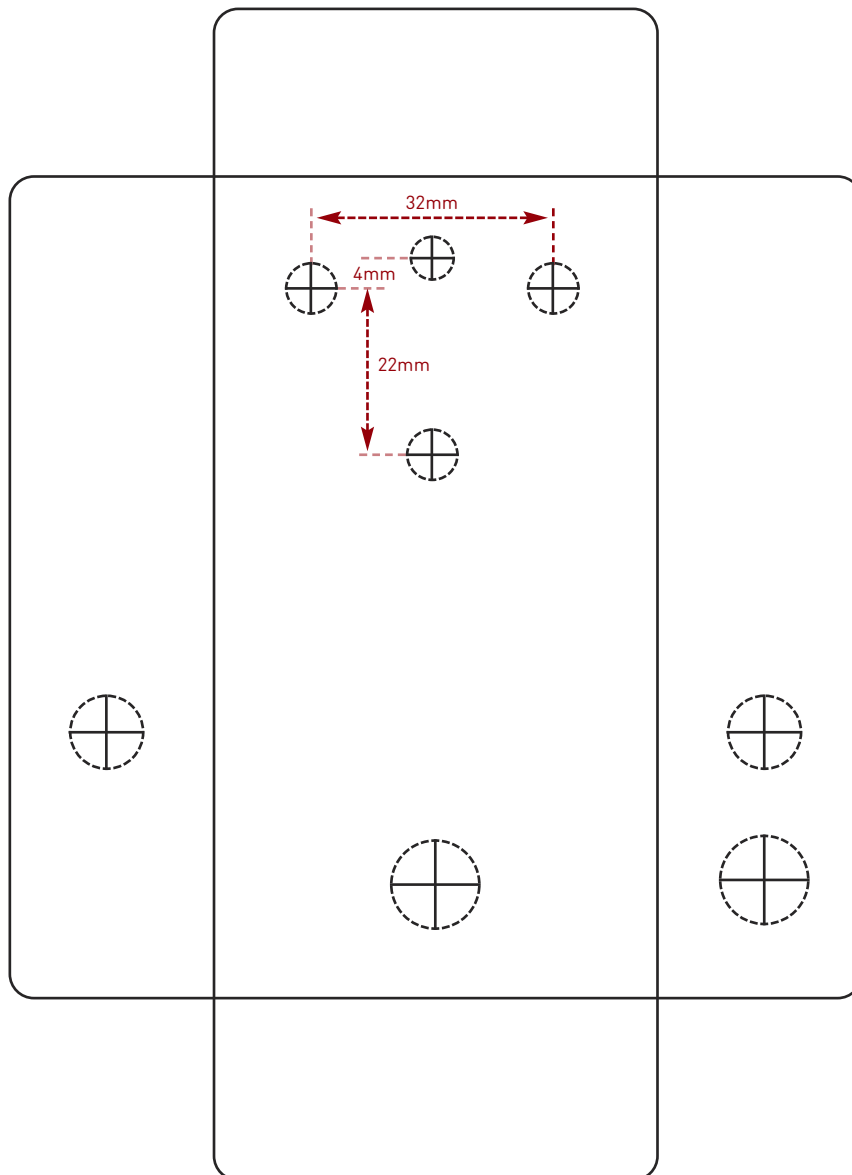
Hammond 1590B - 60 x 111 x 31mm

Drill sizes listed are minimum.

It's a good idea to add 1mm to anything mounted on the PCB that'll poke through the front of the enclosure.

Drill sizes:

Pots	7mm
Jacks	10mm
Footswitch	12mm
DC Socket	12mm
Toggle switches	6mm
Rotary switches	10mm



This template is a rough guide only. You should ensure correct marking of your enclosure before drilling. You use this template at your own risk.

Pedal Parts Ltd can accept no responsibility for incorrect drilling of enclosures.

FuzzDog.co.uk