

IVP Pre

Clanky, skanky preamp

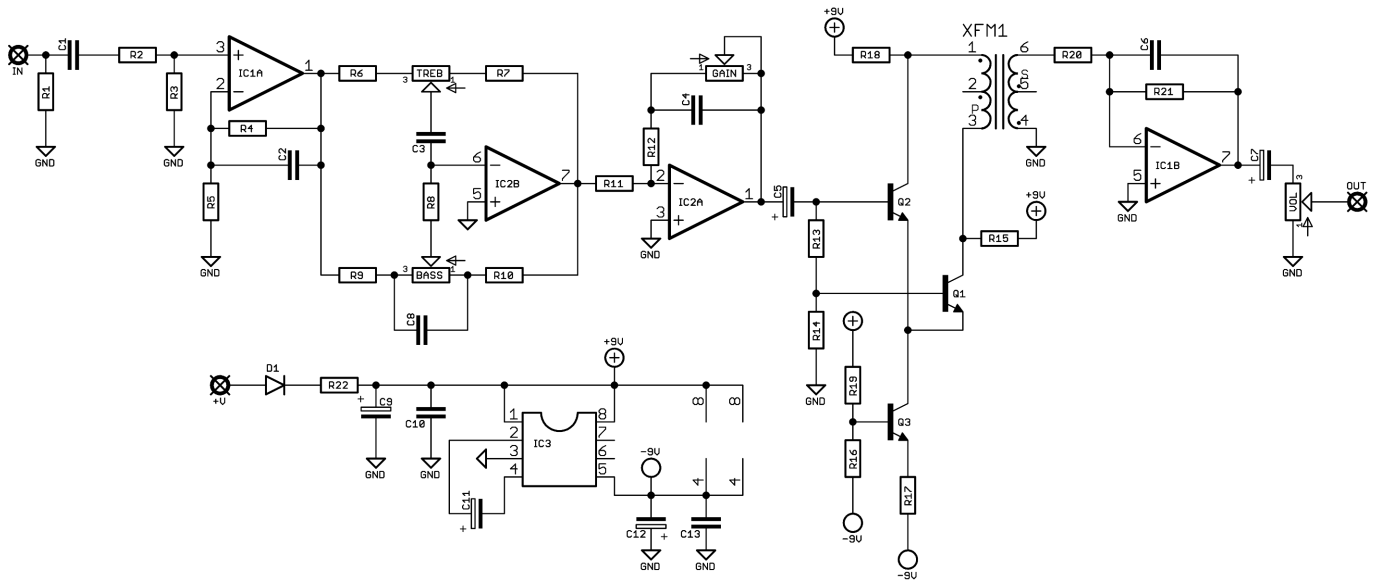


Before you dig in, ensure you download and read the **General Build Guide**.

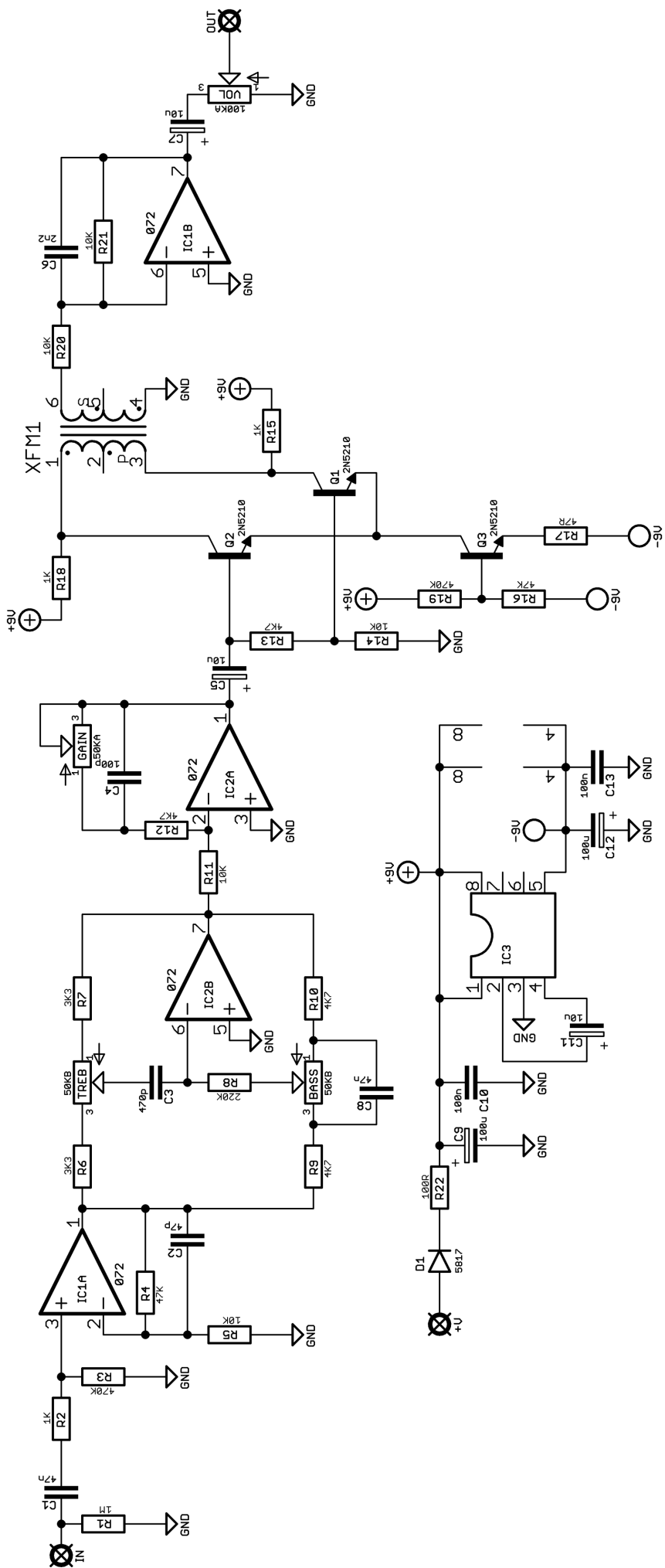
It contains all the information you need for a successful outcome.

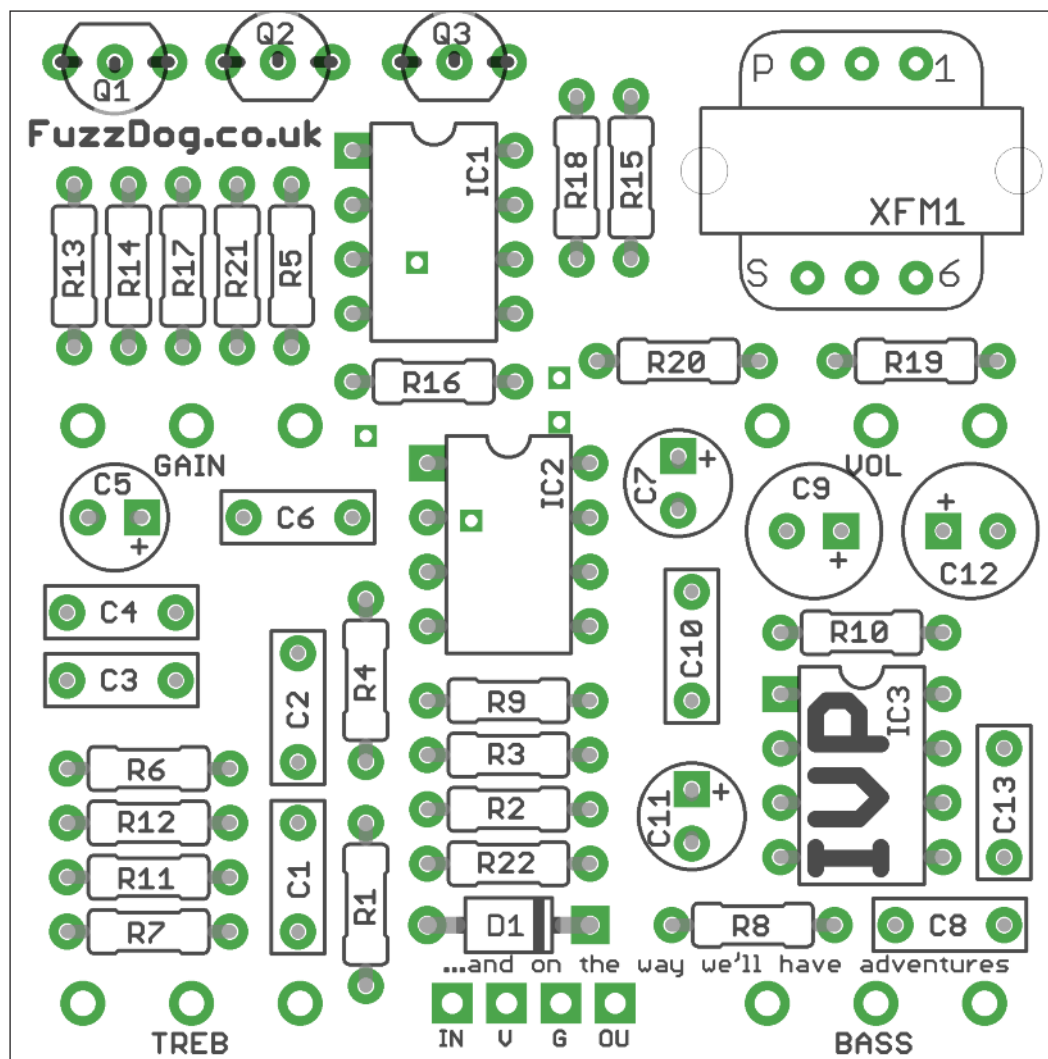


Schematic + BOM



R1	1M	C1	47n	D1	1N5817
R2	1K	C2	47p		
R3	470K	C3	470p	Q1-3	2N5210
R4	47K	C4	100p	IC1-2	TL072
R5	10K	C5	10u elec	IC3	7660SEPA/LT1054
R6	3K3	C6	2n2		
R7	3K3	C7	10u elec	BASS	50KA
R8	220K	C8	47n	GAIN	50KA
R9	4K7	C9	100u elec	TREB	50KB
R10	4K7	C10	100n	VOL	100KA
R11	10K	C11	10u elec		
R12	4K7	C12	100u elec	XFM1	42TL218RC
R13	4K7	C13	100n		
R14	10K				
R15	1K				
R16	47K				
R17	47R				
R18	1K				
R19	470K				
R20	10K				
R21	10K				
R22	100R				

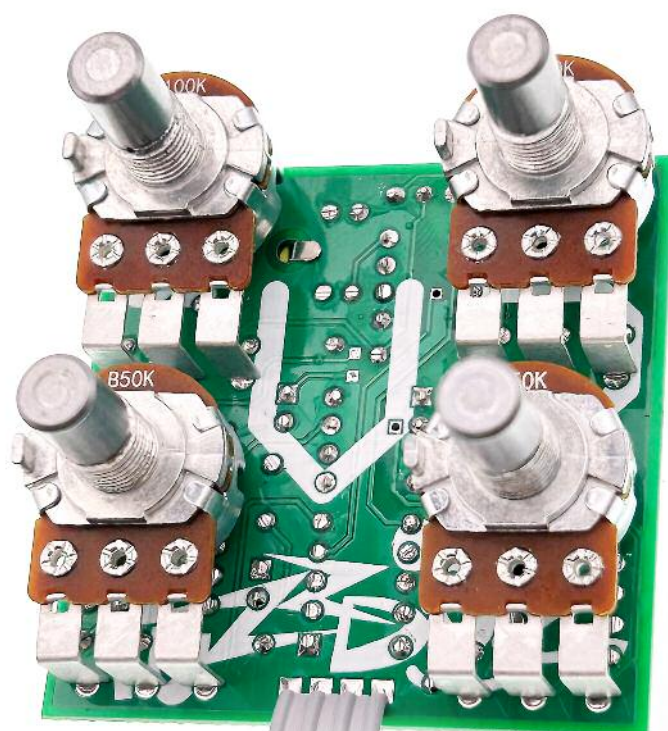




Snap the small metal tags off the pots so they can be mounted flush in the box.

You should solder all other board-mounted components before you solder the pots.

Once they're in place you'll have no access to much of the board.



Drilling template

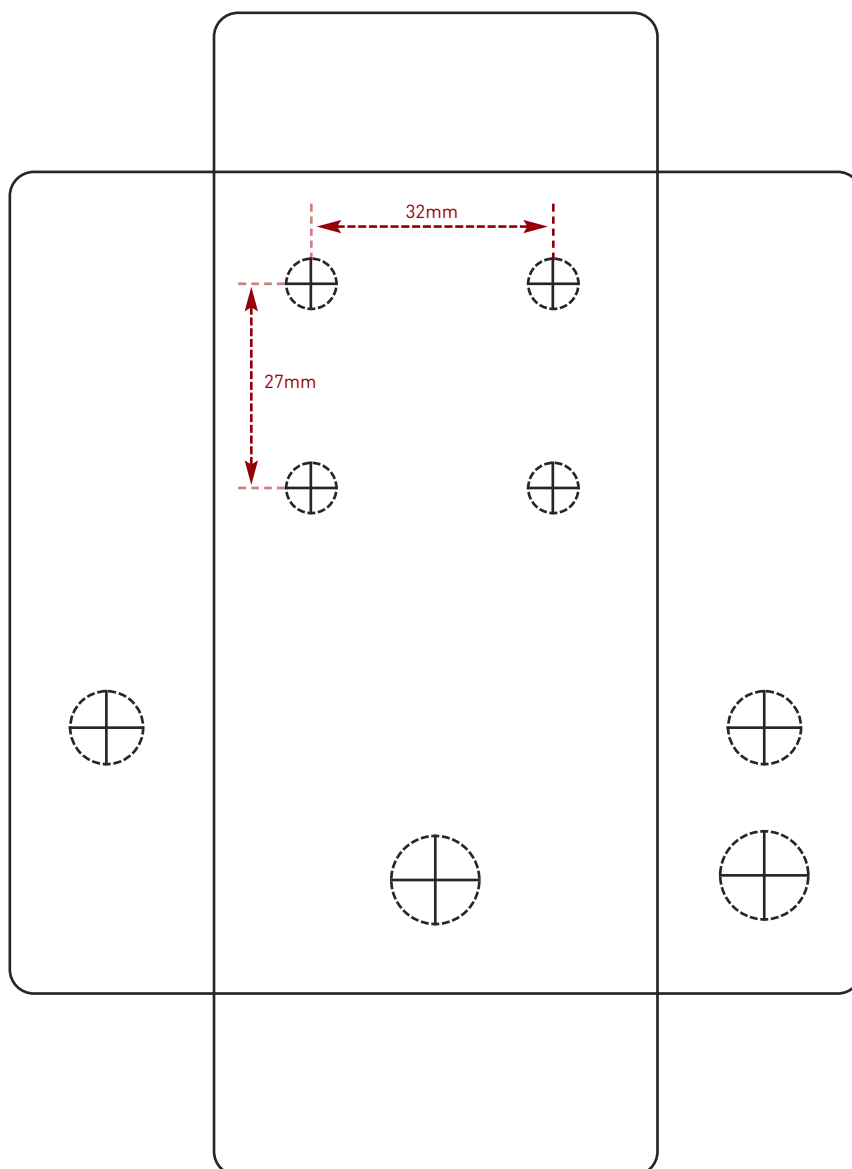
Hammond 1590B - 60 x 111 x 31mm

Drill sizes listed are minimum.

It's a good idea to add 1mm to anything mounted on the PCB that'll poke through the front of the enclosure.

Drill sizes:

Pots	7mm
Jacks	10mm
Footswitch	12mm
DC Socket	12mm
Toggle switches	6mm
Rotary switches	10mm



This template is a rough guide only. You should ensure correct marking of your enclosure before drilling. You use this template at your own risk.

Pedal Parts Ltd can accept no responsibility for incorrect drilling of enclosures.

FuzzDog.co.uk