

# Hamlet

Who wouldn't want  
to play The Dane?

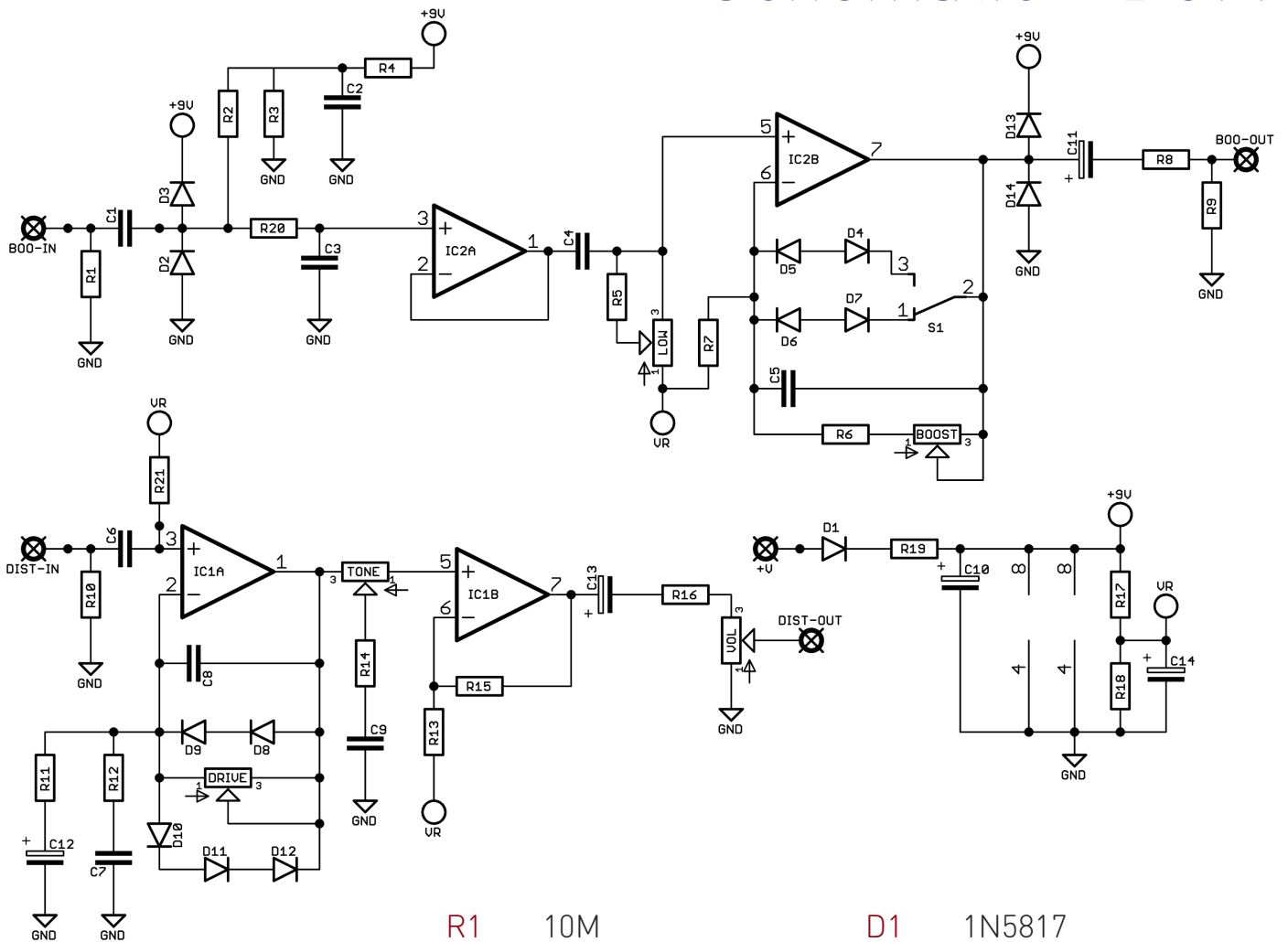


Before you dig in, ensure you download and read the **General Build Guide**.

It contains all the information you need for a successful outcome.



# Schematic + BOM



C1	220n
C2	470n
C3	100p
C4	4n7
C5	100p
C6	100n
C7	220n
C8	470p
C9	10n
C10	100u elec
C11	1u elec
C12	2u2 elec
C13	2u2 elec
C14	100u elec

IC1-2 0PA2134

R1	10M
R2	1M
R3	100K
R4	100K
R5	47K
R6	15K
R7	12K
R8	220R
R9	51K
R10	2M2
R11	2K7
R12	680R
R13	10K
R14	3K3
R15	12K
R16	680R
R17	10K
R18	10K
R19	100R
R20	4K7
R21	330K

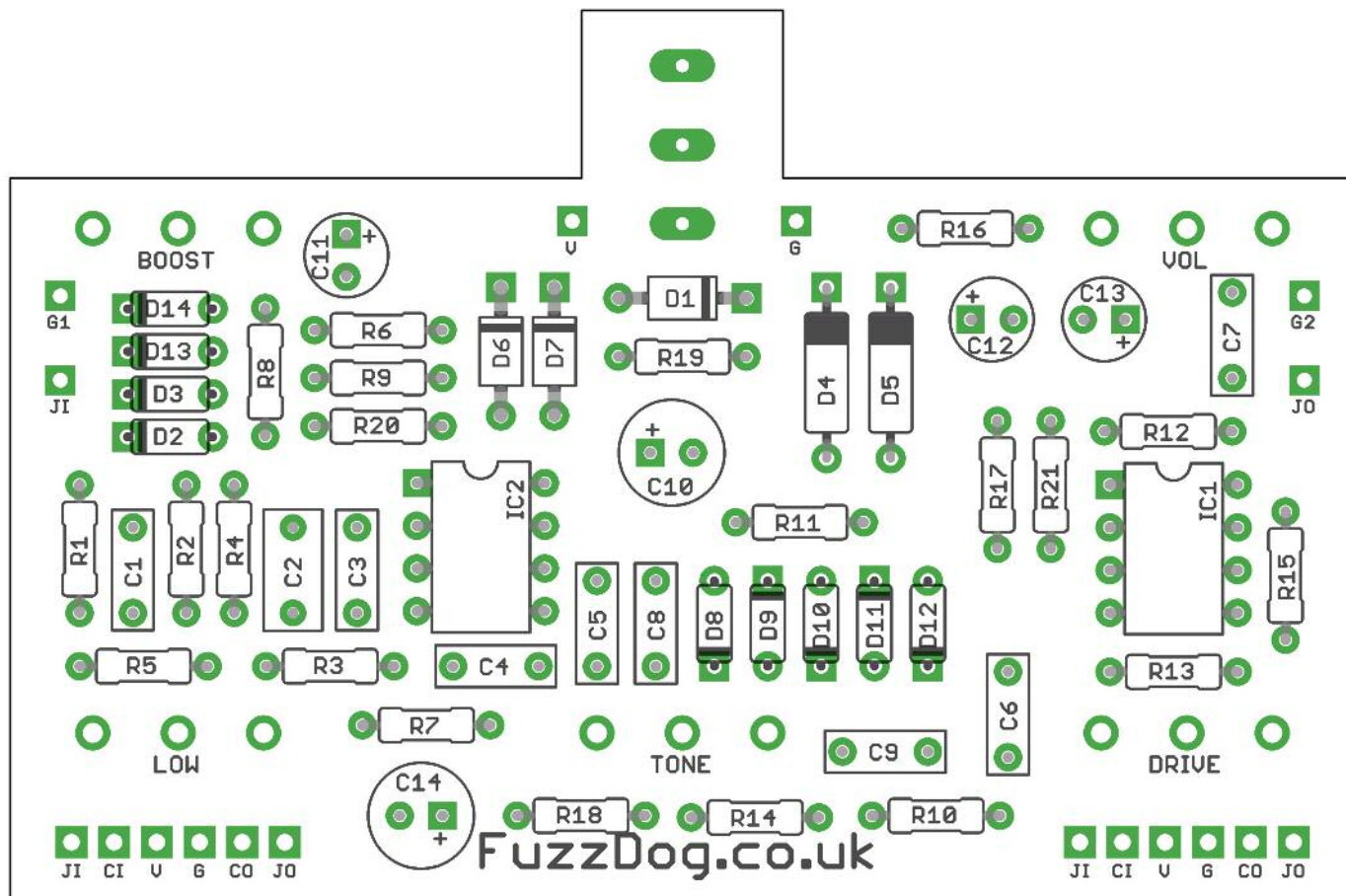
D1	1N5817
D2	1N4148
D3	1N4148
D4	Ge
D5	Ge
D6	1N747A
D7	1N747A
D8-14	1N4148

BOOST	100KB
DRIVE	100KB
LOW	1MA
TONE	100KC
VOL	10KA

SW1 SPDT ON-ON



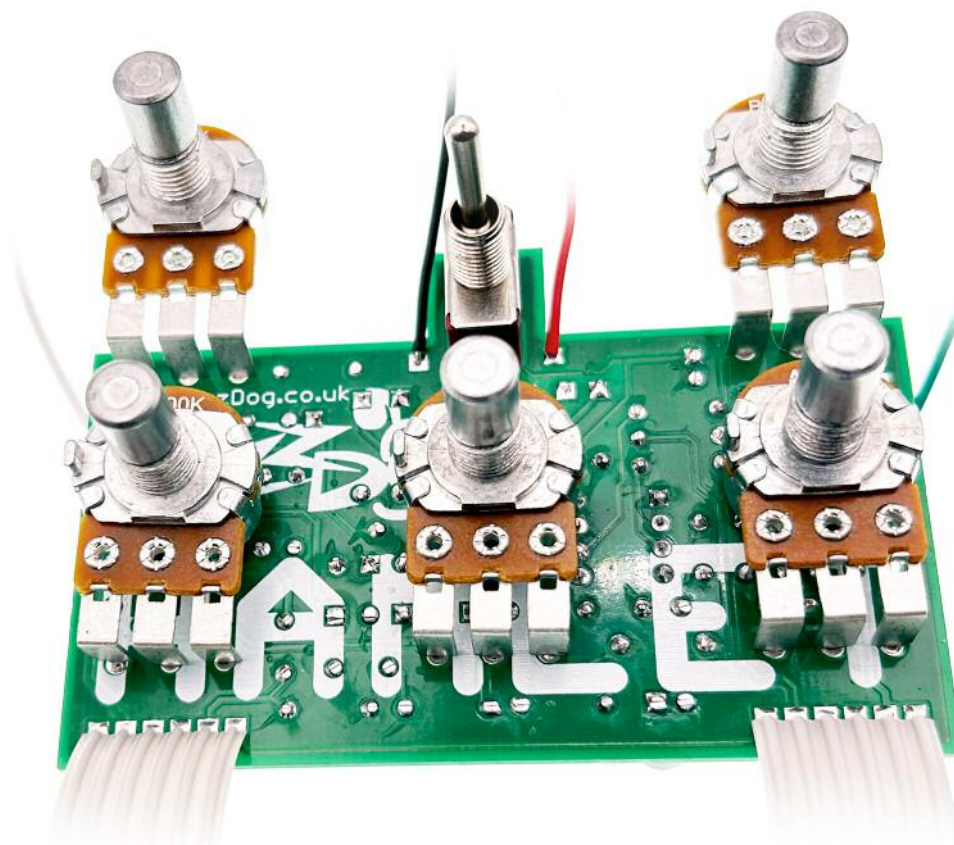


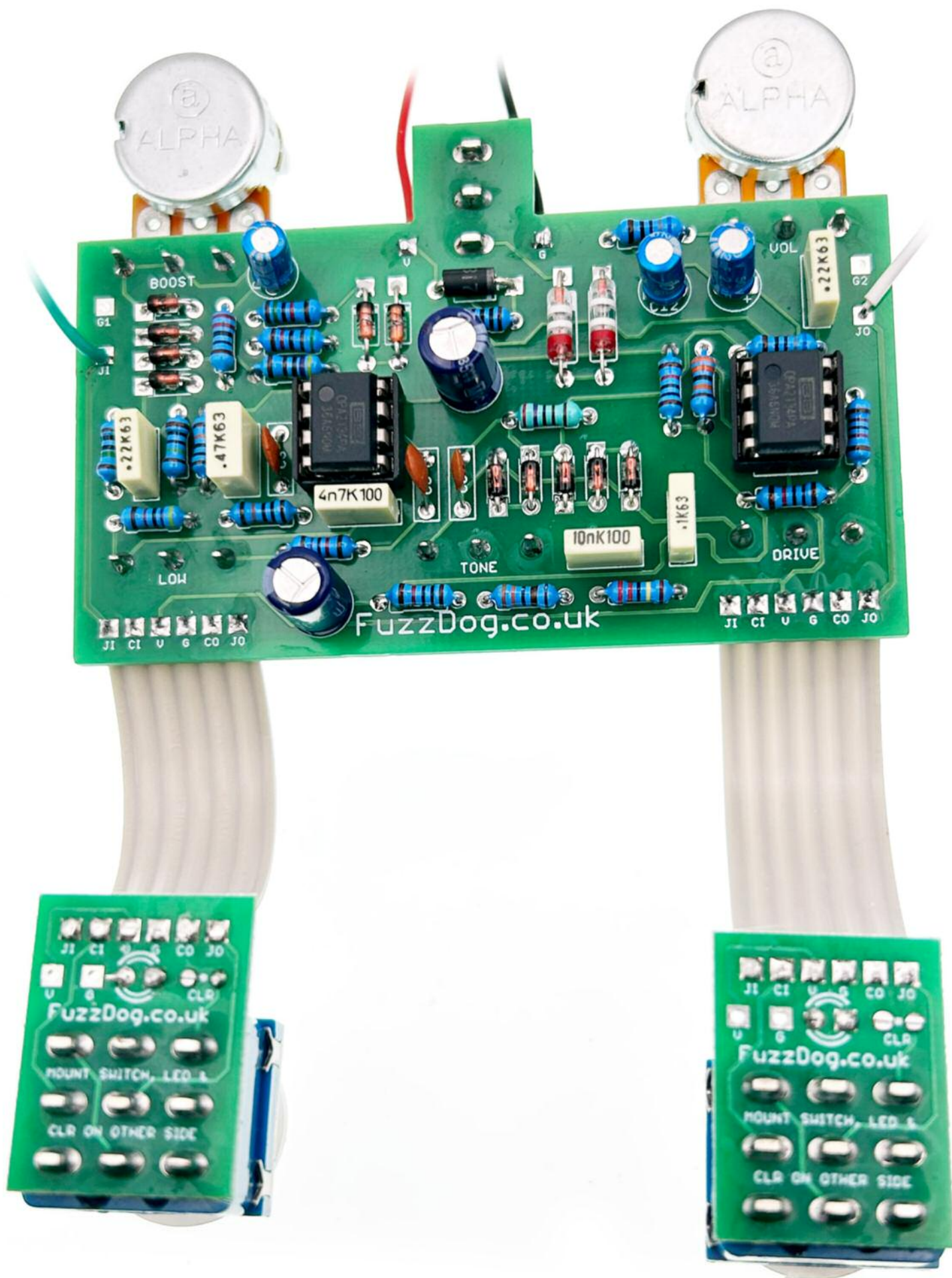


Snap the small metal tag off the pots so they can be mounted flush in the box.

You should solder all other board-mounted components before you solder the pots.

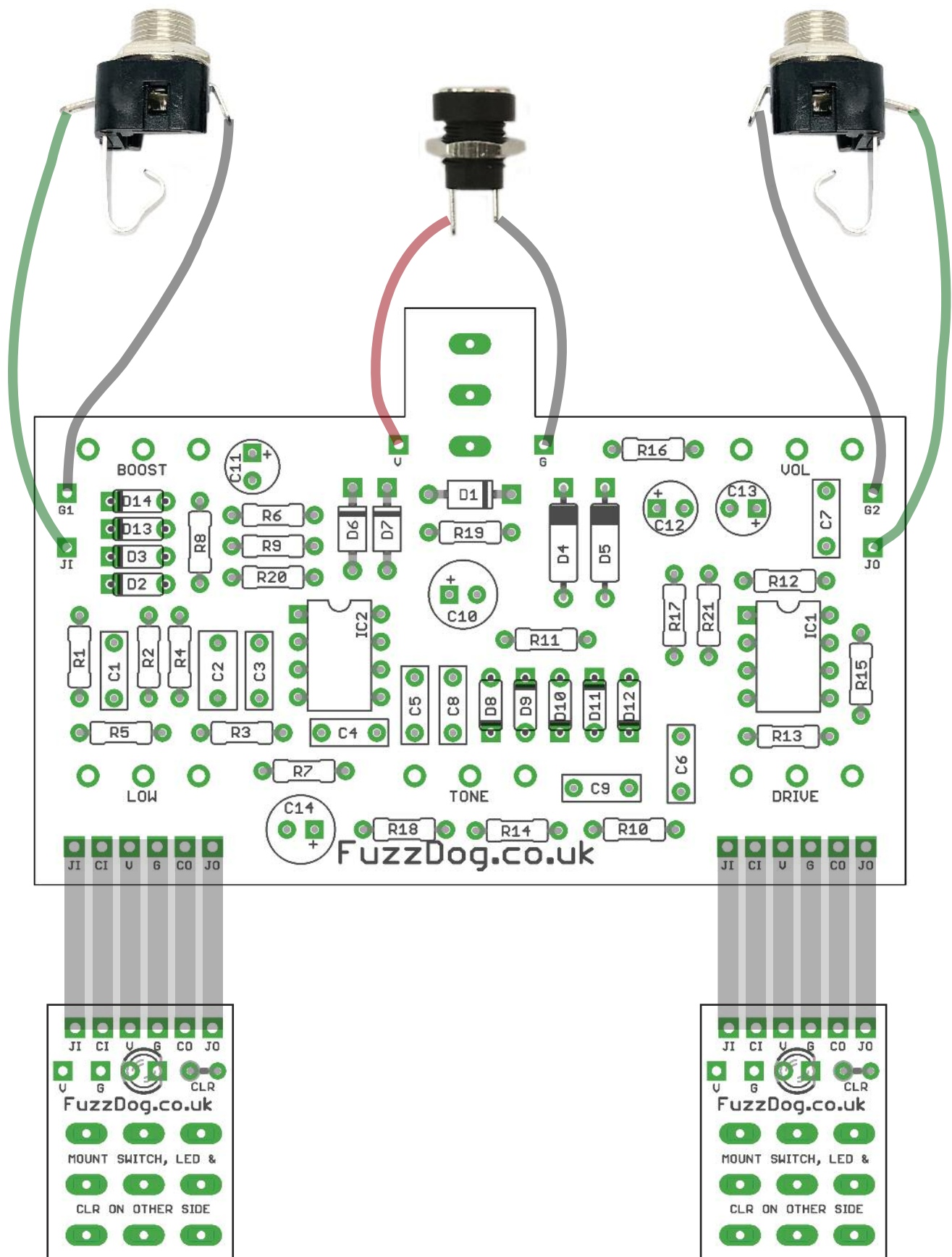
Once they're in place you'll have no access to much of the board.







# Wiring



# Drilling template

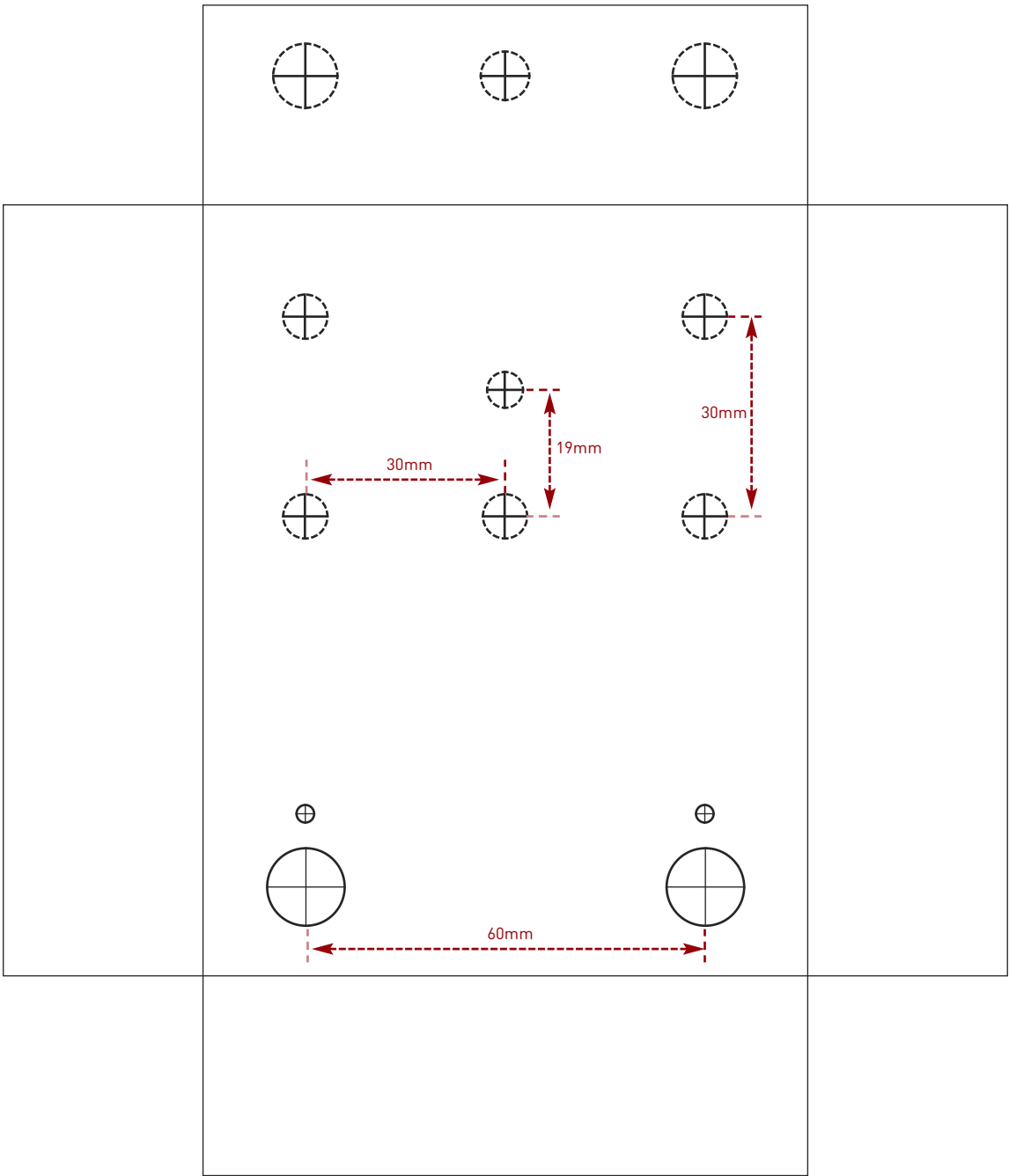
## Hammond 1590BB

Drill sizes listed are minimum.

It's a good idea to add 1mm to anything mounted on the PCB that'll poke through the front of the enclosure.

Drill sizes:

Pots	7mm
Jacks	10mm
Footswitch	12mm
DC Socket	12mm
Toggle switches	6mm
Rotary switches	10mm



This template is a rough guide only. You should ensure correct marking of your enclosure before drilling. You use this template at your own risk.  
Pedal Parts Ltd can accept no responsibility for incorrect drilling of enclosures.

FuzzDog.co.uk