

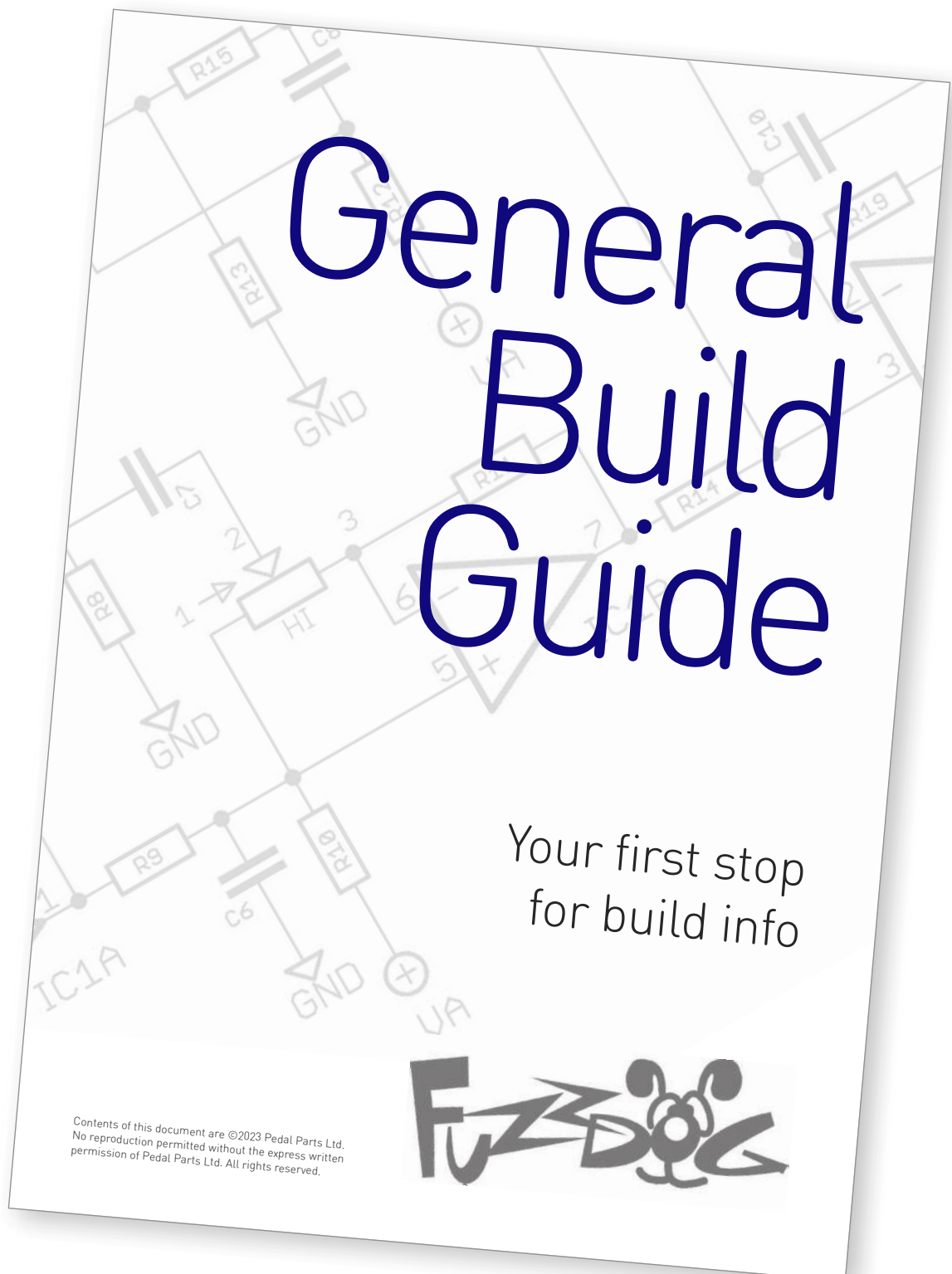
Green Spike

The Rosac Nu Fuzz
half of the Spires

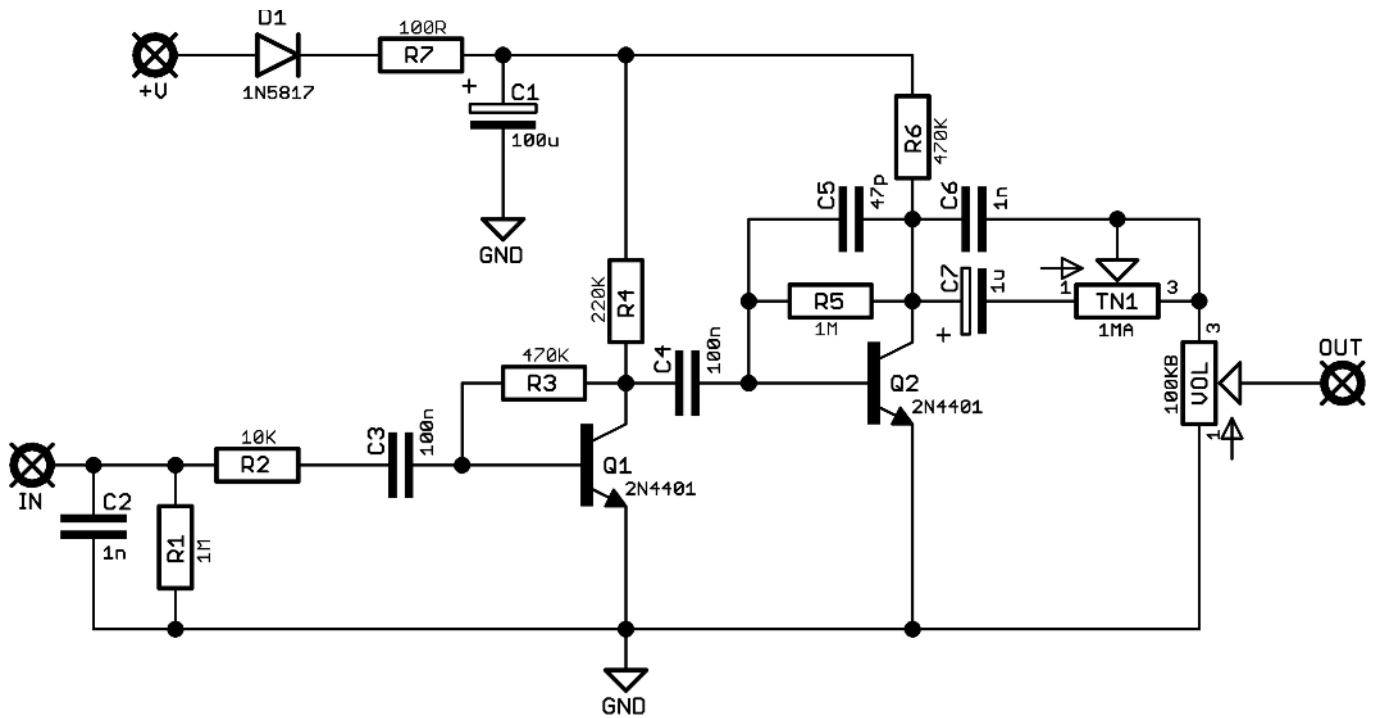


Before you dig in, ensure you download and read the **General Build Guide**.

It contains all the information you need for a successful outcome.



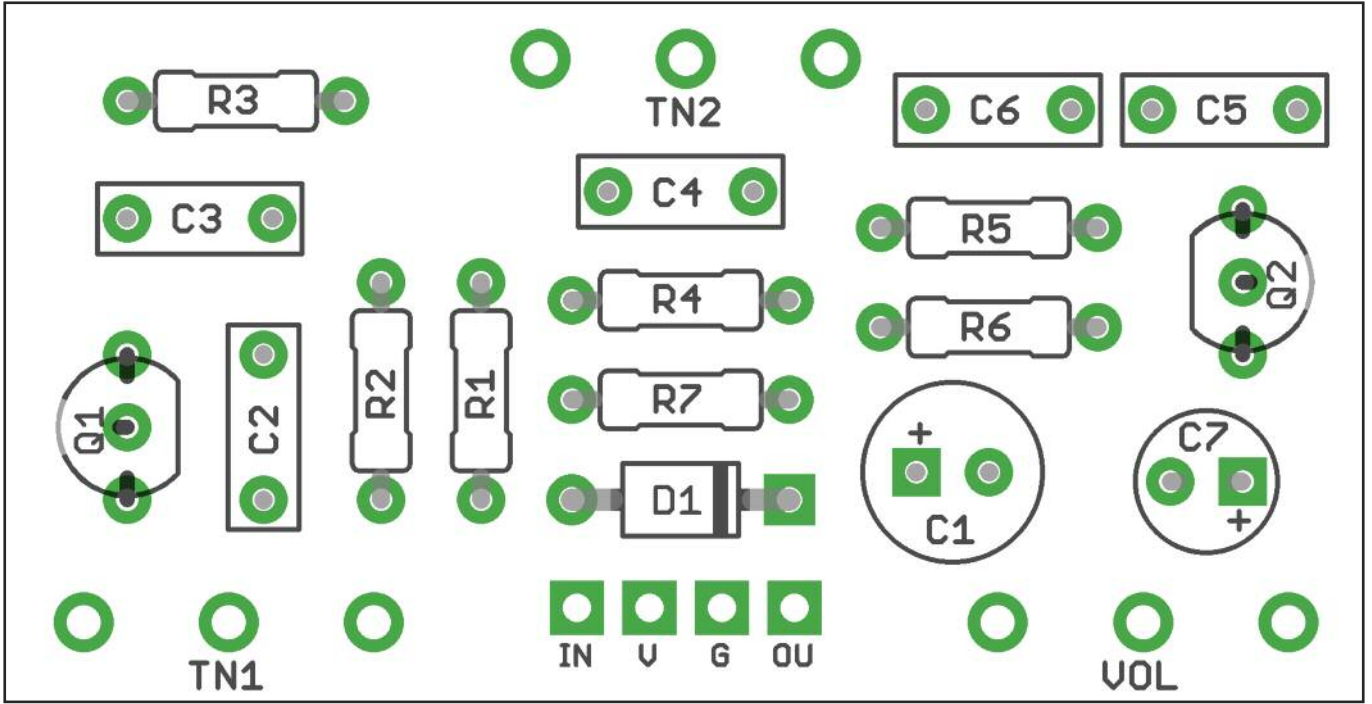
Schematic + BOM



R1	1M	C1	100u elec	D1	1N5817
R2	10K	C2	1n	Q1-2	2N4401
R3	470K	C3	100n	TONE	1MA*
R4	220K	C4	100n	VOL	100KB
R5	1M	C5	47p		
R6	470K	C6	1n		
R7	100R	C7	1u elec		

*Small whoops-ette on the board. Whichever set of tone pads you aren't using, jumper pads 2-3 on the other.

Why two sets of Tone pot pads? You can use the top one in a dual build in conjunction with the Red Spike, giving you a similar control layout to the original dual pedal.



Snap the small metal tags off the pots so they can be mounted flush in the box.

Drilling template

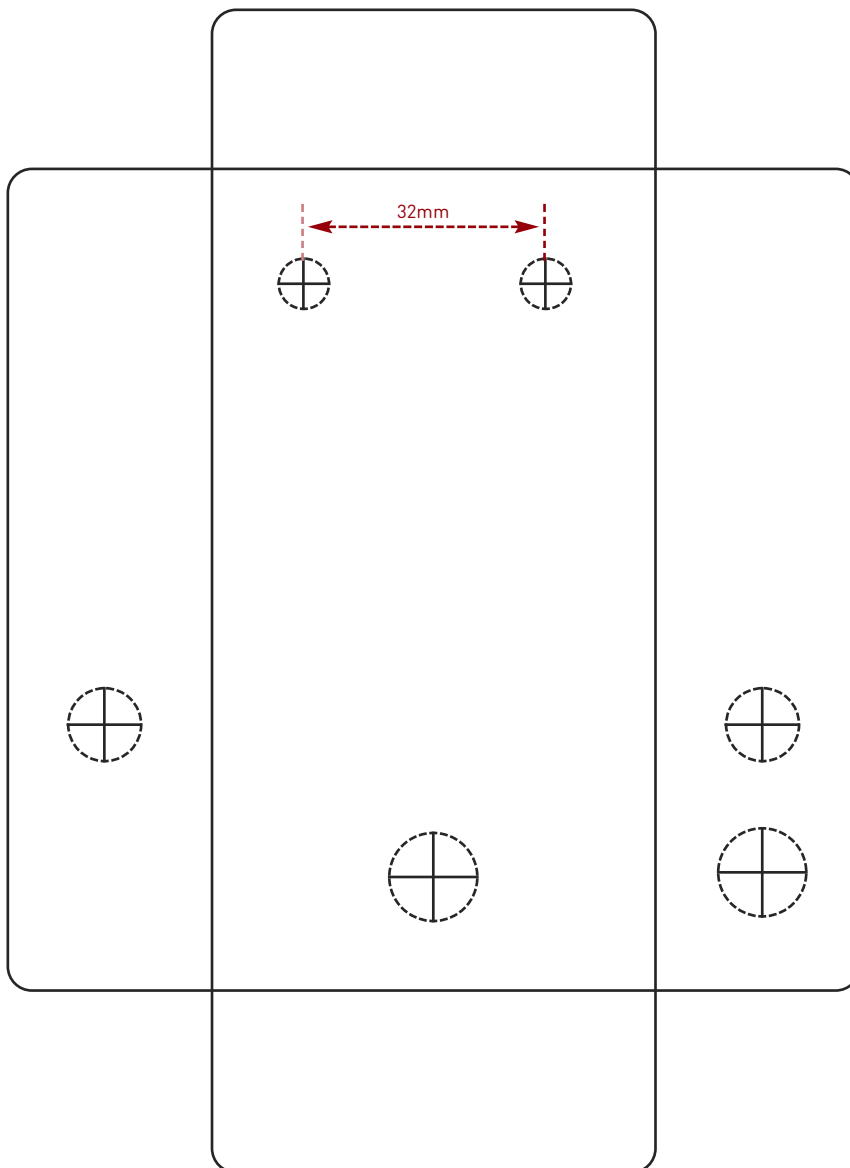
Hammond 1590B - 60 x 111 x 31mm

Drill sizes listed are minimum.

It's a good idea to add 1mm to anything mounted on the PCB that'll poke through the front of the enclosure.

Drill sizes:

Pots	7mm
Jacks	10mm
Footswitch	12mm
DC Socket	12mm
Toggle switches	6mm
Rotary switches	10mm



This template is a rough guide only. You should ensure correct marking of your enclosure before drilling. You use this template at your own risk.

Pedal Parts Ltd can accept no responsibility for incorrect drilling of enclosures.

FuzzDog.co.uk