

God says NO!

Simply divine MosFET boost
without the crackle

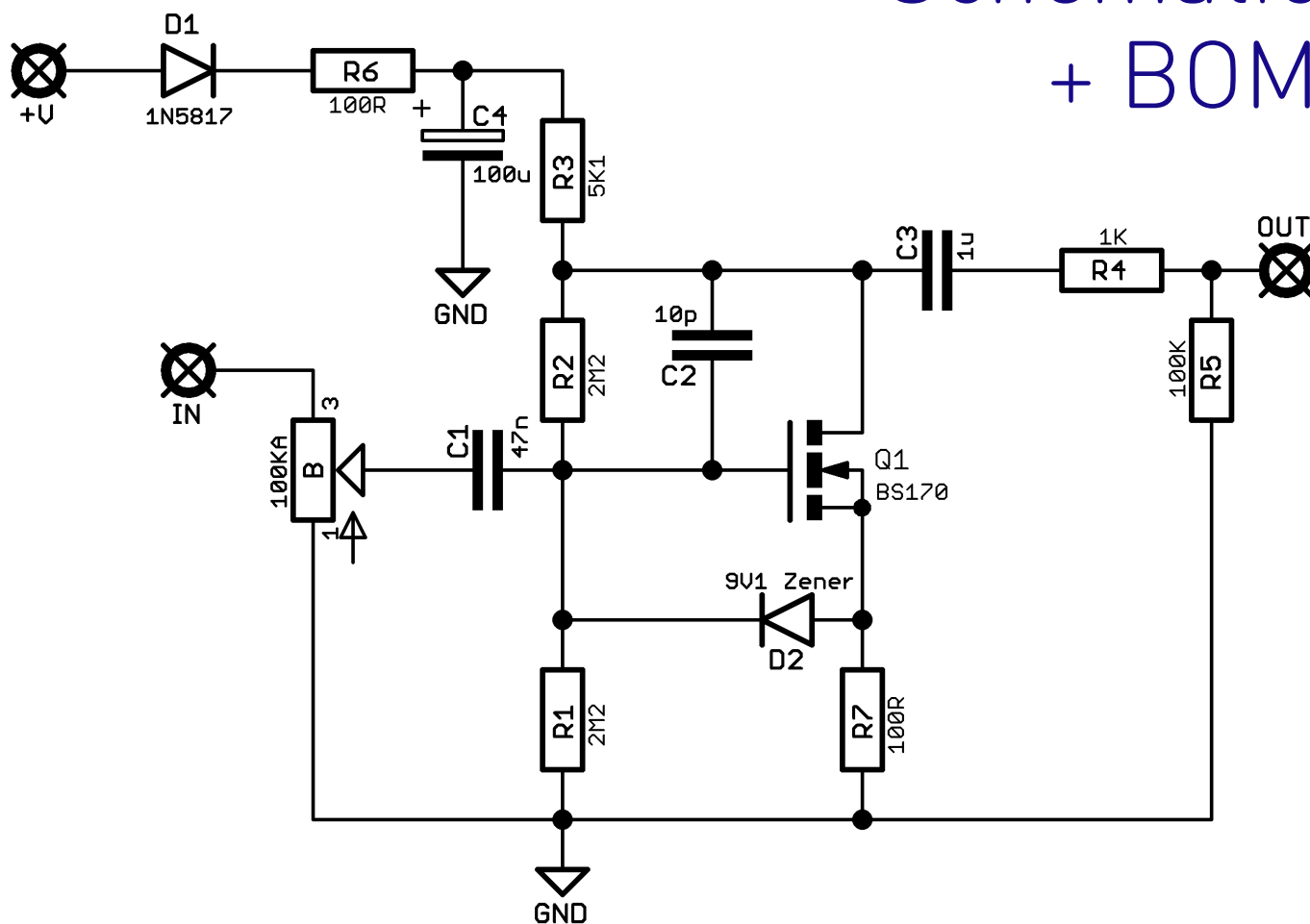


Before you dig in, ensure you download and read the **General Build Guide**.

It contains all the information you need for a successful outcome.



Schematic + BOM



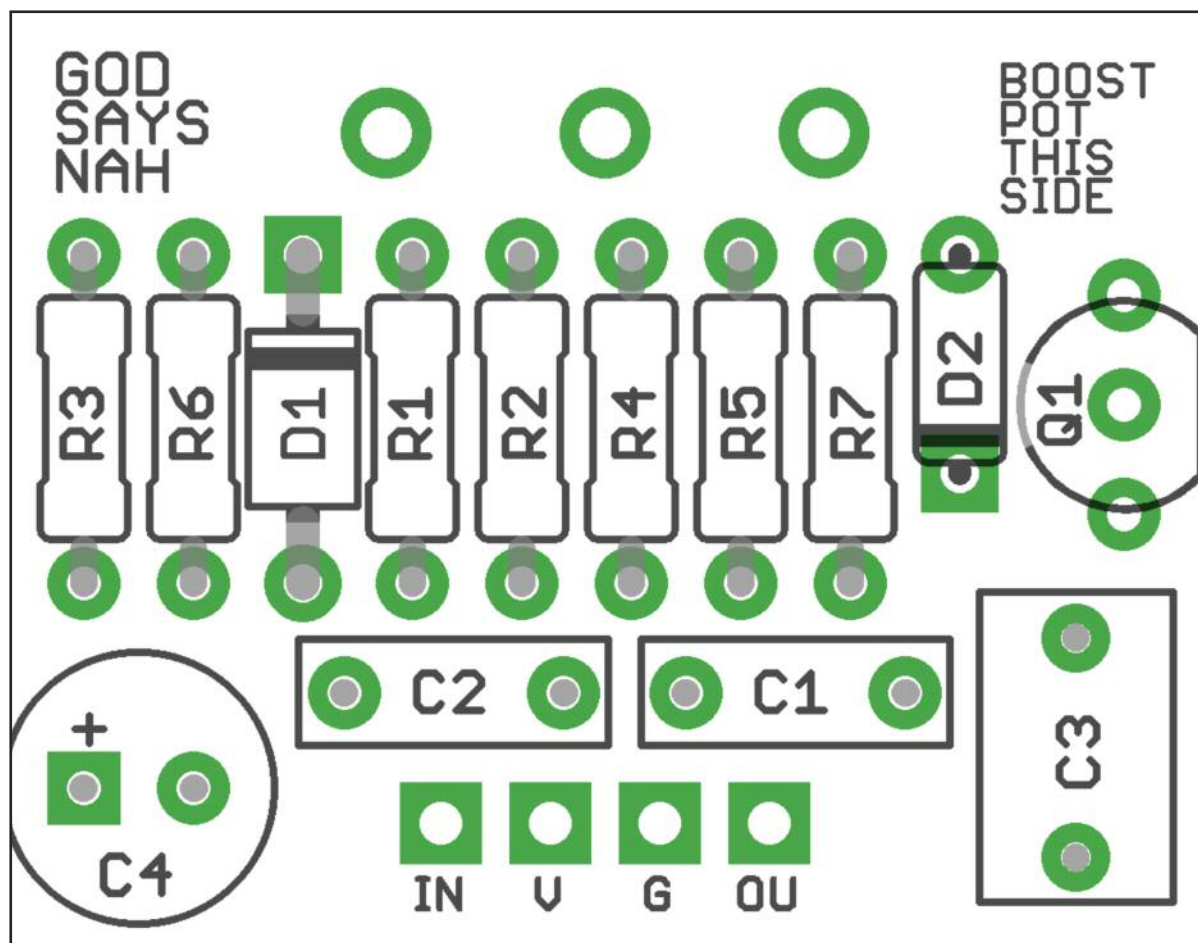
R1 2M2
R2 2M2
R3 5K1
R4 1K
R5 100K
R6 100R

C1 47n
C2 10p
C3 1u
C4 100u elec

D1 1N5817
D2 9V1 zener
Q1 BS170*

BOOST 100KA

*Incredibly sensitive to static and heat. Don't be shuffling across carpet or rubbing balloons in your hair before handling.



Snap the small metal tag off the pot so it can be mounted flush in the box.

You should solder all other board-mounted components before you solder the pot.

Once it's in place you'll have no access to much of the board.

Drilling template

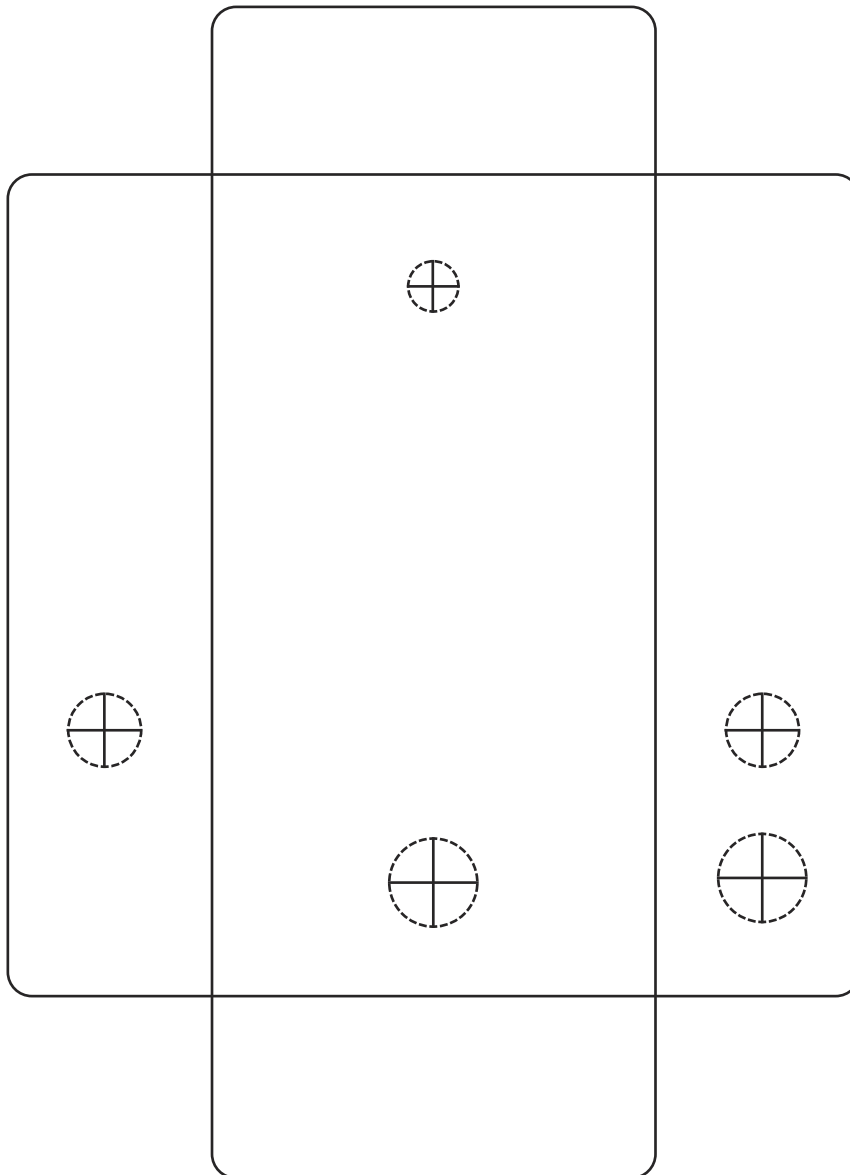
Hammond 1590B - 60 x 111 x 31mm

Drill sizes listed are minimum.

It's a good idea to add 1mm to anything mounted on the PCB that'll poke through the front of the enclosure.

Drill sizes:

Pots	7mm
Jacks	10mm
Footswitch	12mm
DC Socket	12mm
Toggle switches	6mm
Rotary switches	10mm



This template is a rough guide only. You should ensure correct marking of your enclosure before drilling. You use this template at your own risk.

Pedal Parts Ltd can accept no responsibility for incorrect drilling of enclosures.

FuzzDog.co.uk