

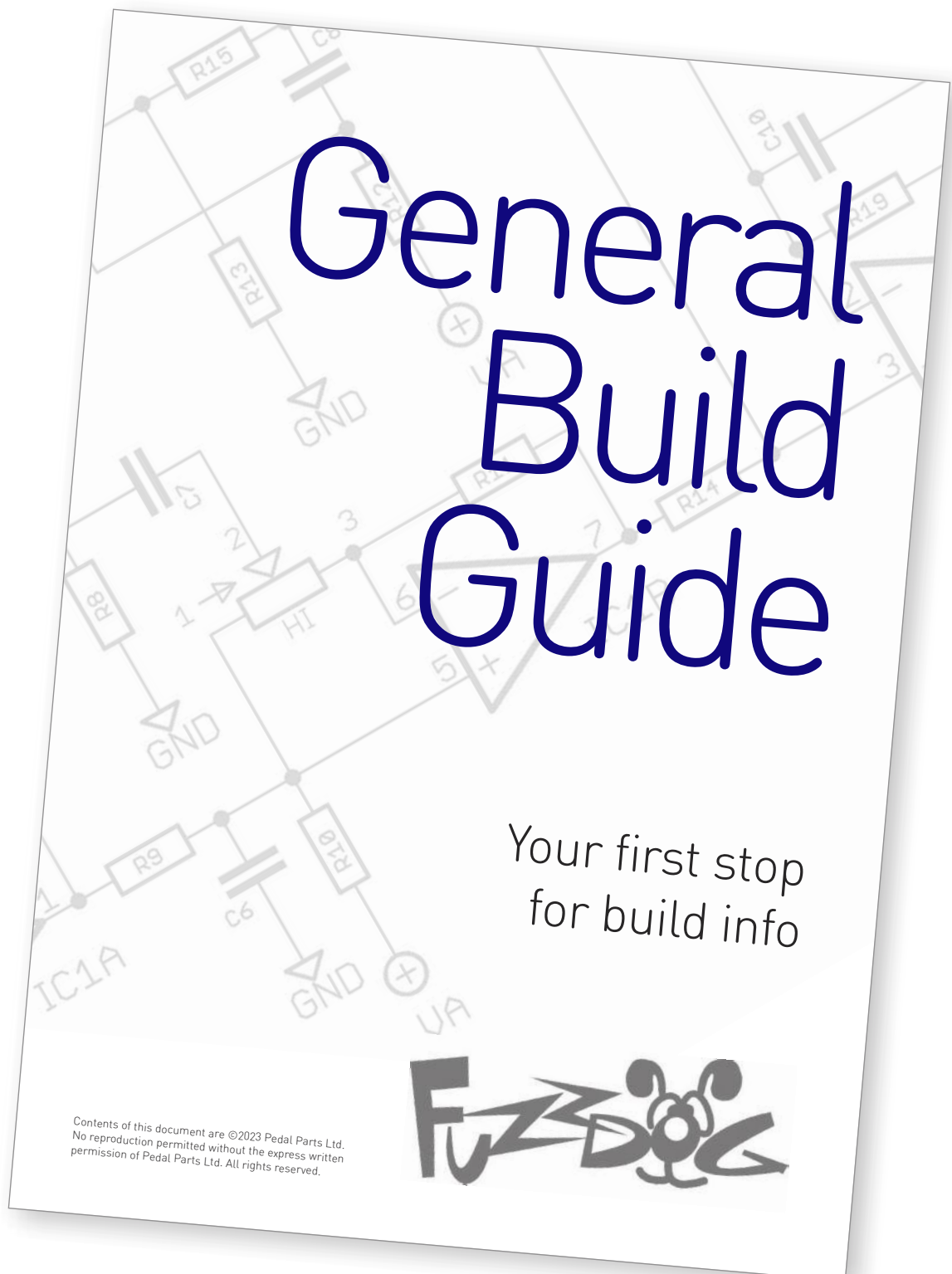
Ghostly Gnasher

Highly tweakable vintage
Neil Young-ish fuzz

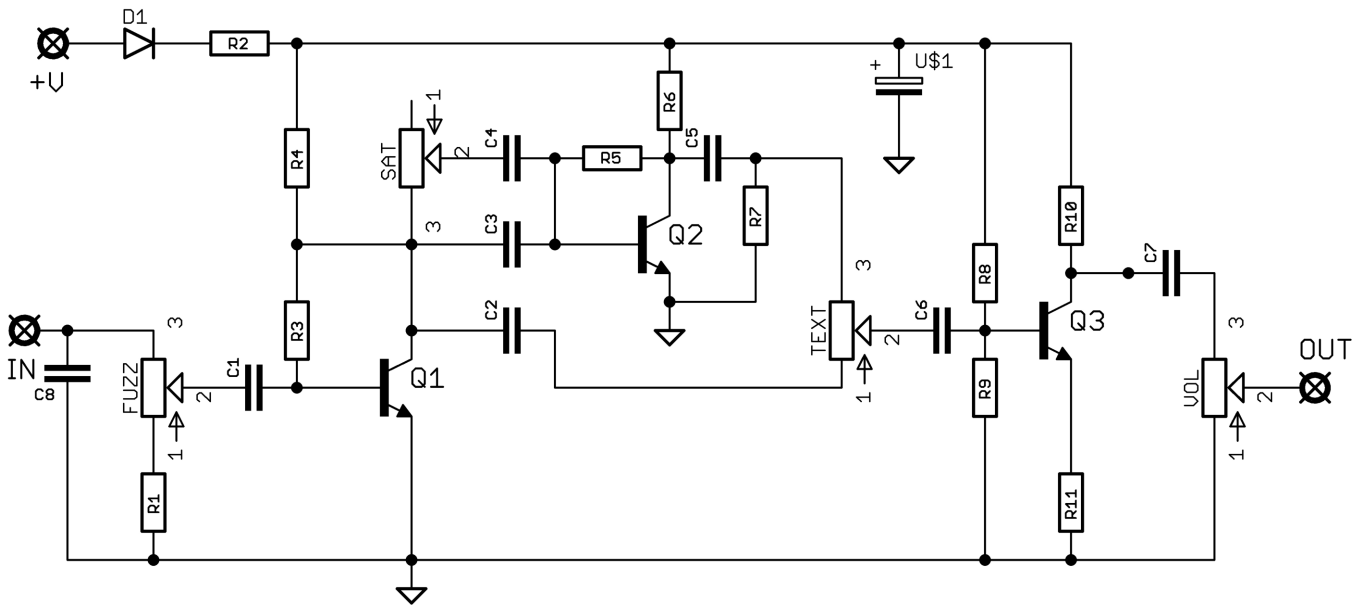


Before you dig in, ensure you download and read the **General Build Guide**.

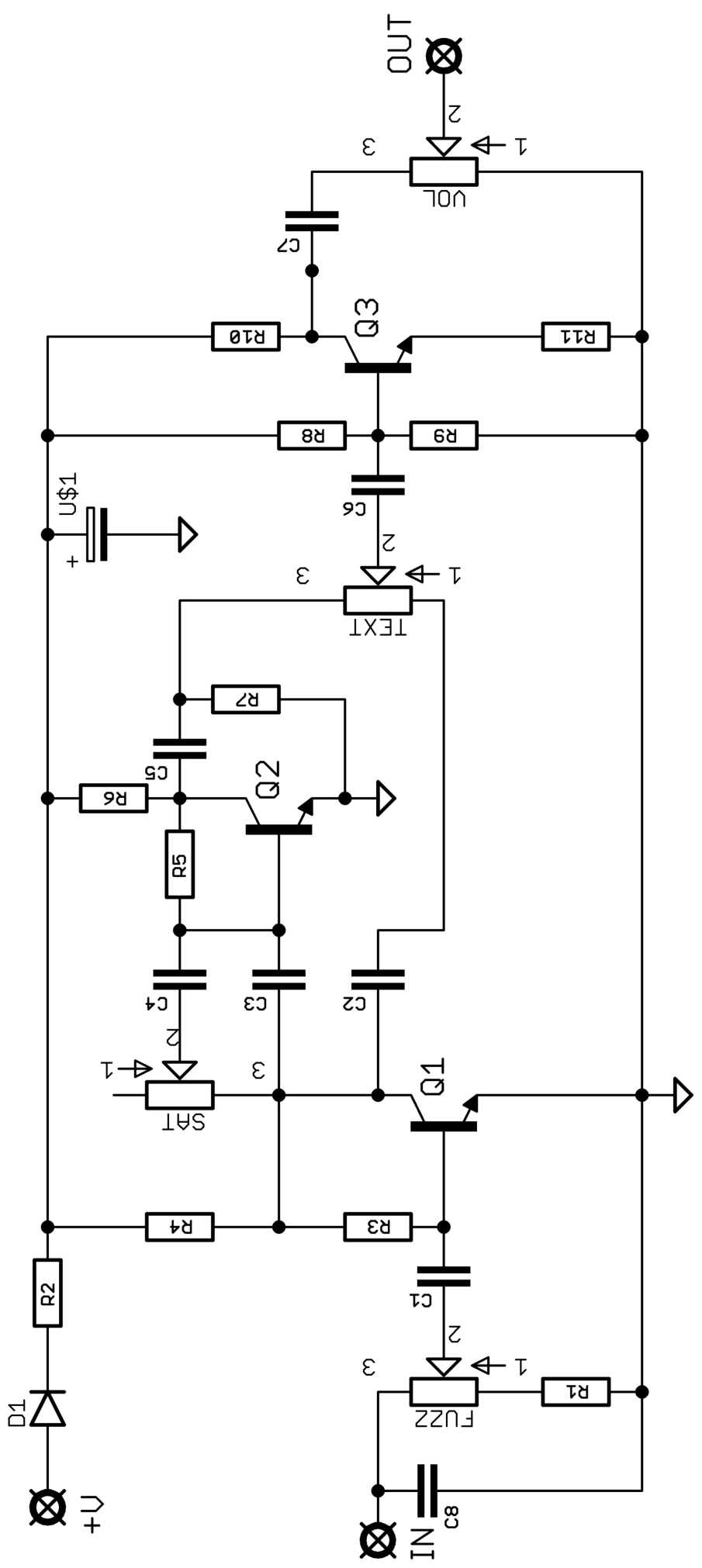
It contains all the information you need for a successful outcome.

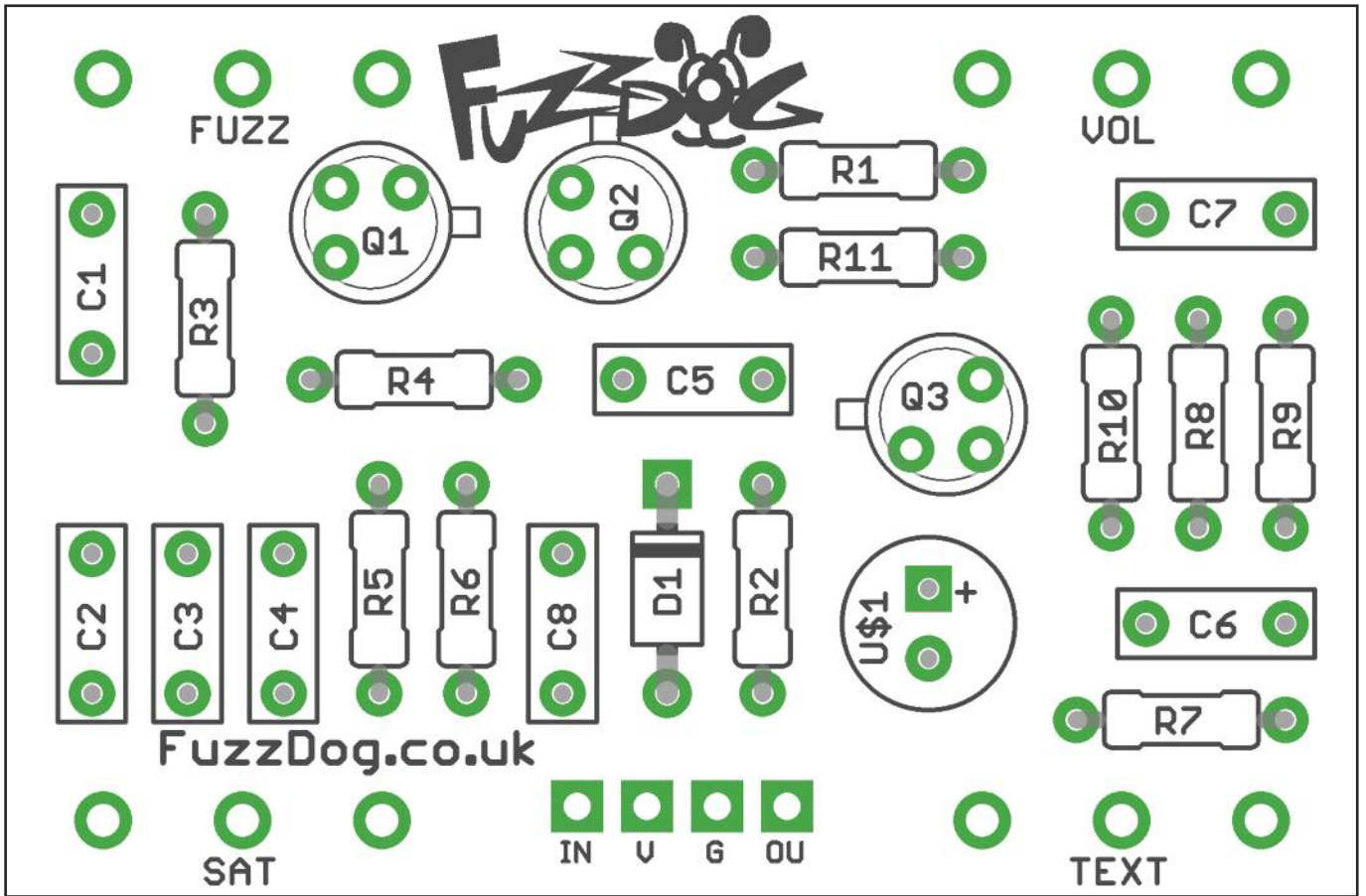


Schematic + BOM



R1	2K2	C1	47n	Q1-3	2N2222
R2	100R	C2	4n7	D1	1N5817
R3	4M7	C3	330p	FUZZ	250KB
R4	20K	C4	100n	VOL	100KA
R5	1M	C5	4n7	SAT	250KB
R6	15K	C6	100n	TEX	1MB
R7	39K	C7	100n		
R8	470K	C8	10n		
R9	100K	U\$1	100u elec		
R10	3K6				
R11	390R				





Snap the small metal tag off the pots so they can be mounted flush in the box.

You should solder all other board-mounted components before you solder the pots.



Drilling template

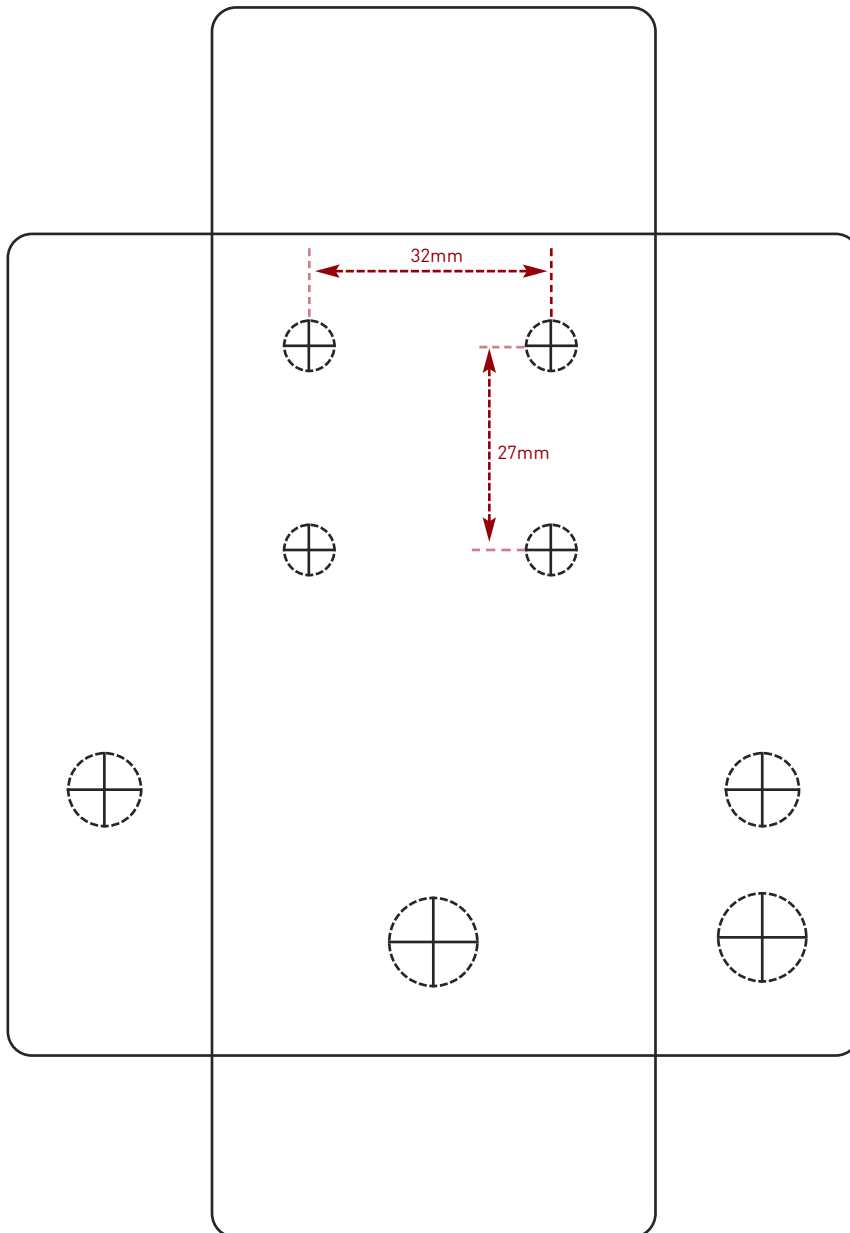
Hammond 1590B - 60 x 111 x 31mm

Drill sizes listed are minimum.

It's a good idea to add 1mm to anything mounted on the PCB that'll poke through the front of the enclosure.

Drill sizes:

Pots	7mm
Jacks	10mm
Footswitch	12mm
DC Socket	12mm
Toggle switches	6mm
Rotary switches	10mm



This template is a rough guide only. You should ensure correct marking of your enclosure before drilling. You use this template at your own risk.

Pedal Parts Ltd can accept no responsibility for incorrect drilling of enclosures.

FuzzDog.co.uk