

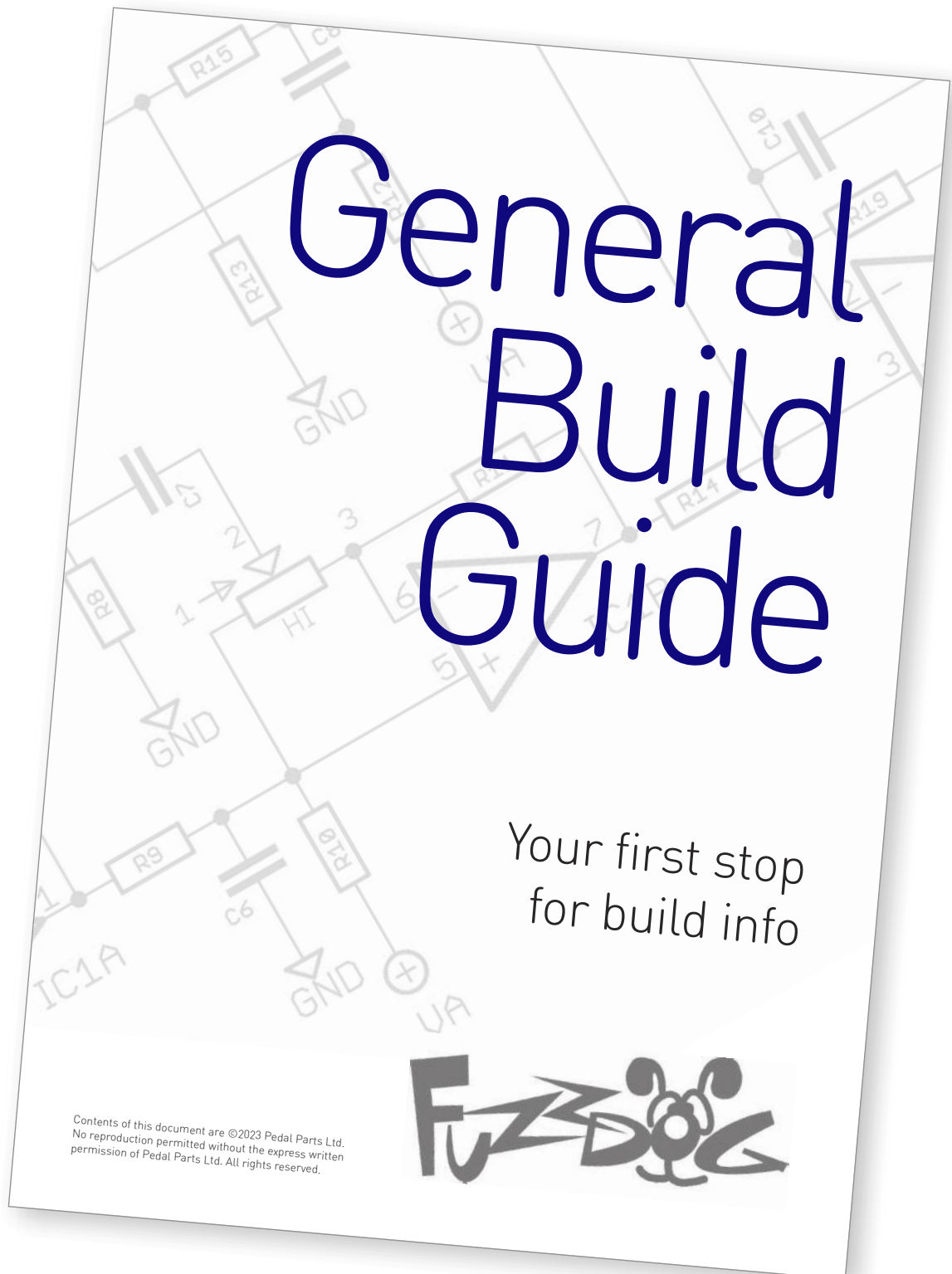
Ghost Notes

Add some glitchy octave
loveliness to your tone

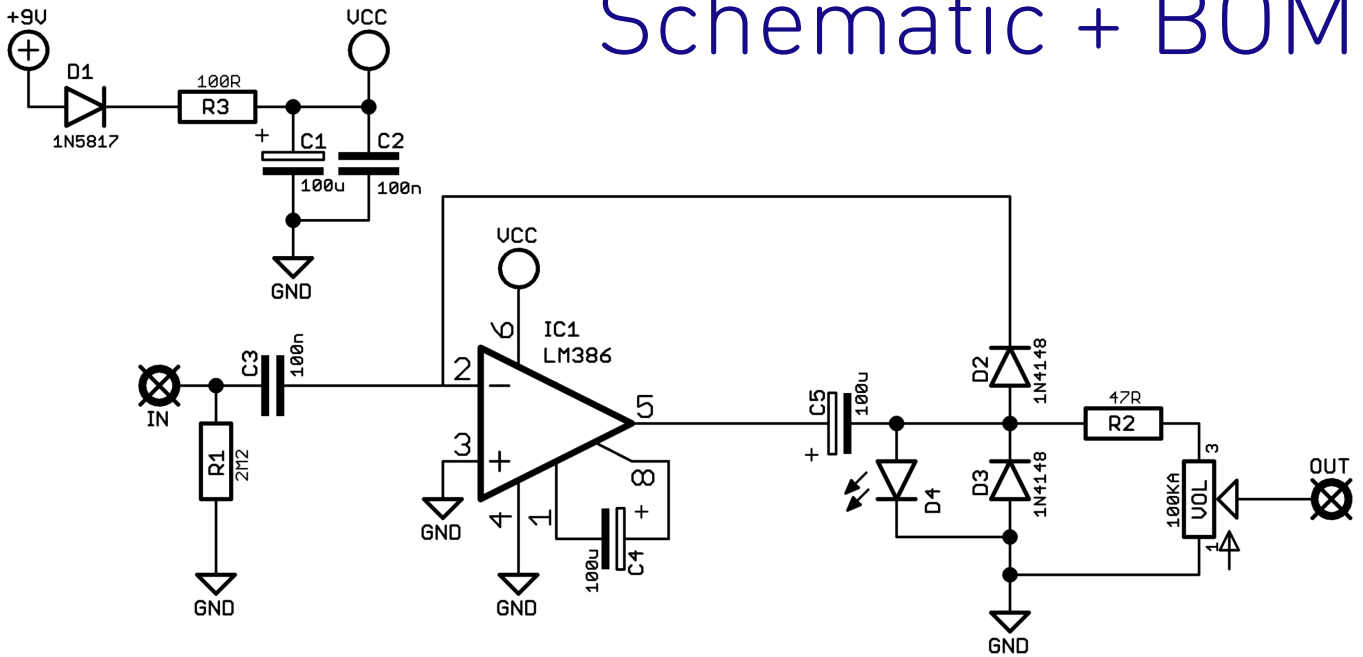


Before you dig in, ensure you download and read the **General Build Guide**.

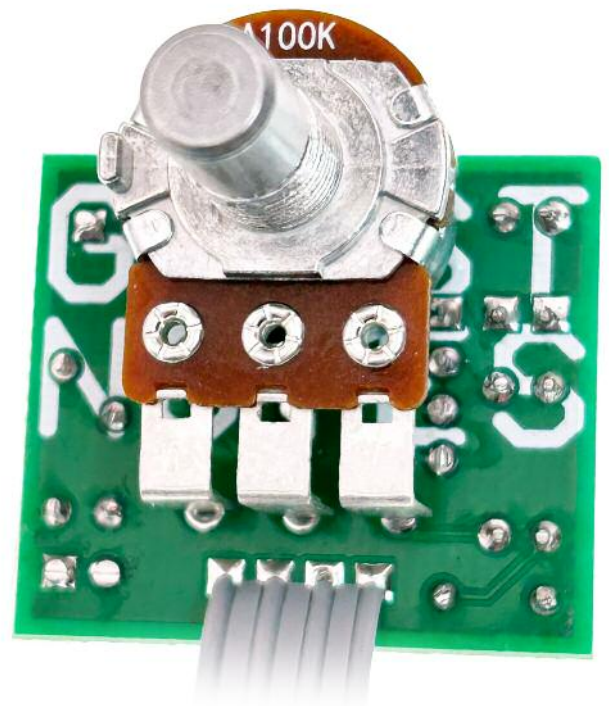
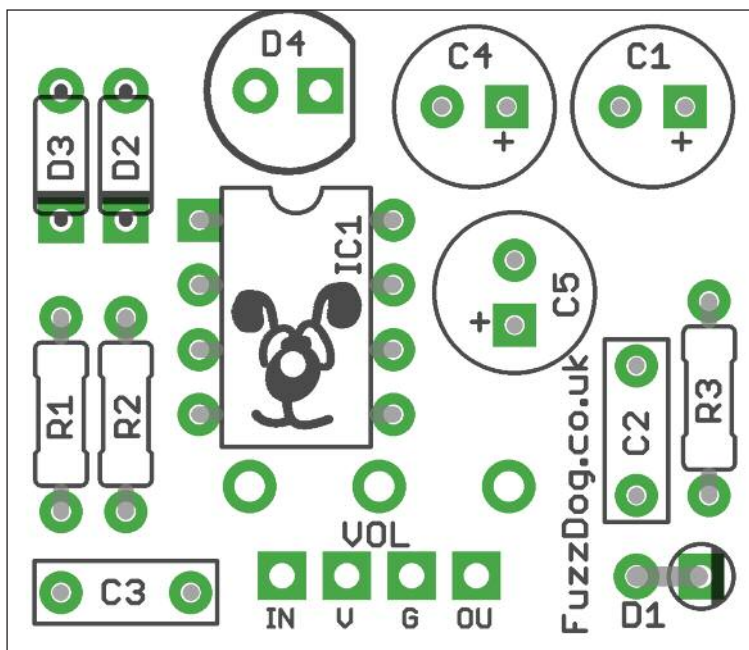
It contains all the information you need for a successful outcome.



Schematic + BOM



| | | | |
|----|-----------|-----|----------|
| R1 | 2M2 | D1 | 1N5817 |
| R2 | 47R | D2 | 1N4148 |
| R3 | 100R | D3 | 1N4148 |
| | | D4 | Blue LED |
| C1 | 100u elec | | |
| C2 | 100n | IC1 | LM386 |
| C3 | 100n | | |
| C4 | 100u elec | VOL | 100KA |
| C5 | 100u elec | | |



Drilling template

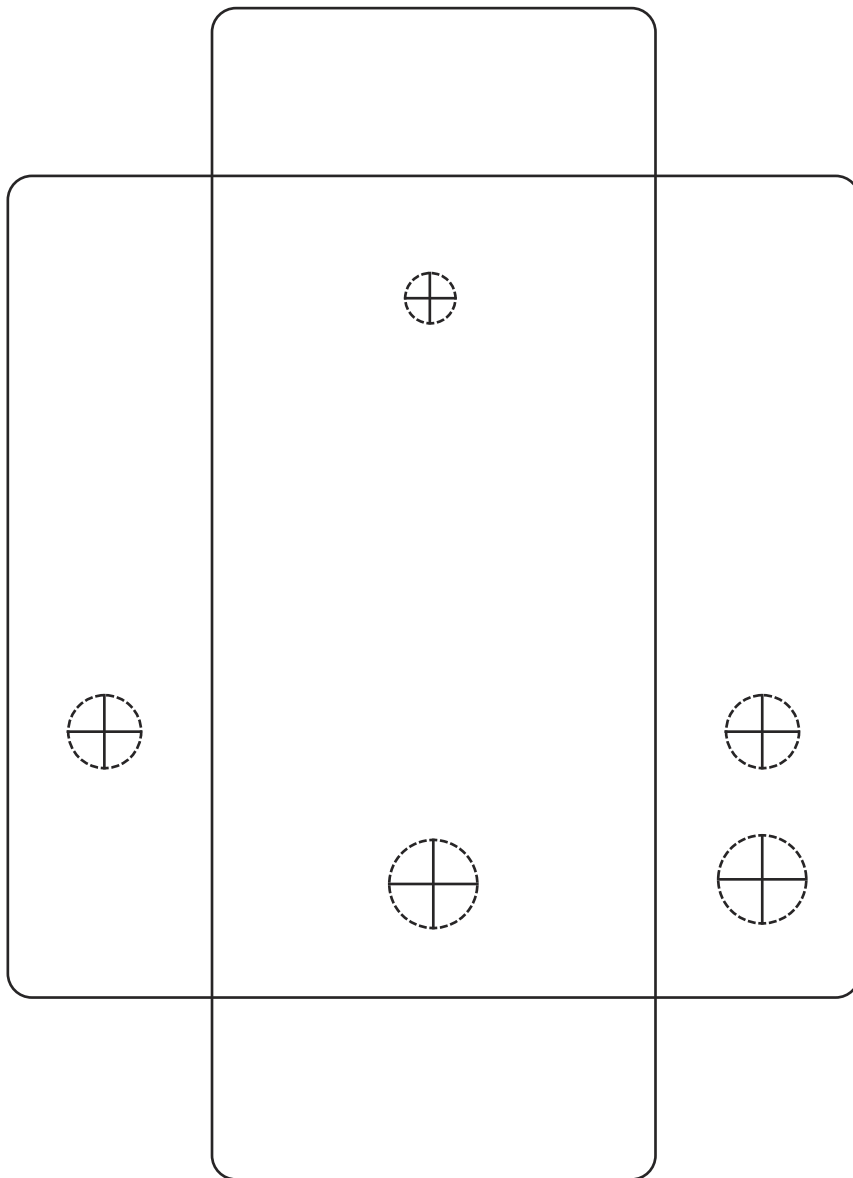
Hammond 1590B - 60 x 111 x 31mm

Drill sizes listed are minimum.

It's a good idea to add 1mm to anything mounted on the PCB that'll poke through the front of the enclosure.

Drill sizes:

| | |
|------------|------|
| Pots | 7mm |
| Jacks | 10mm |
| Footswitch | 12mm |
| DC Socket | 12mm |



This template is a rough guide only. You should ensure correct marking of your enclosure before drilling. You use this template at your own risk.

Pedal Parts Ltd can accept no responsibility for incorrect drilling of enclosures.

FuzzDog.co.uk