

Gape

Open up your amp without
opening up your amp

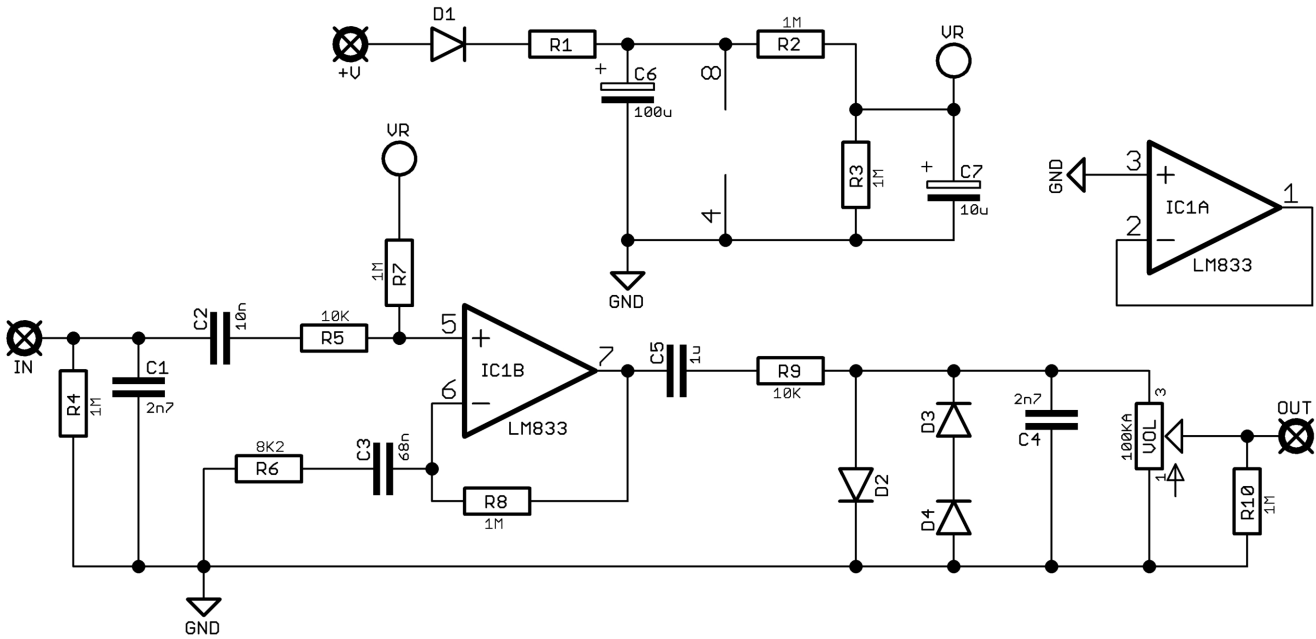


Before you dig in, ensure you download and read the **General Build Guide**.

It contains all the information you need for a successful outcome.

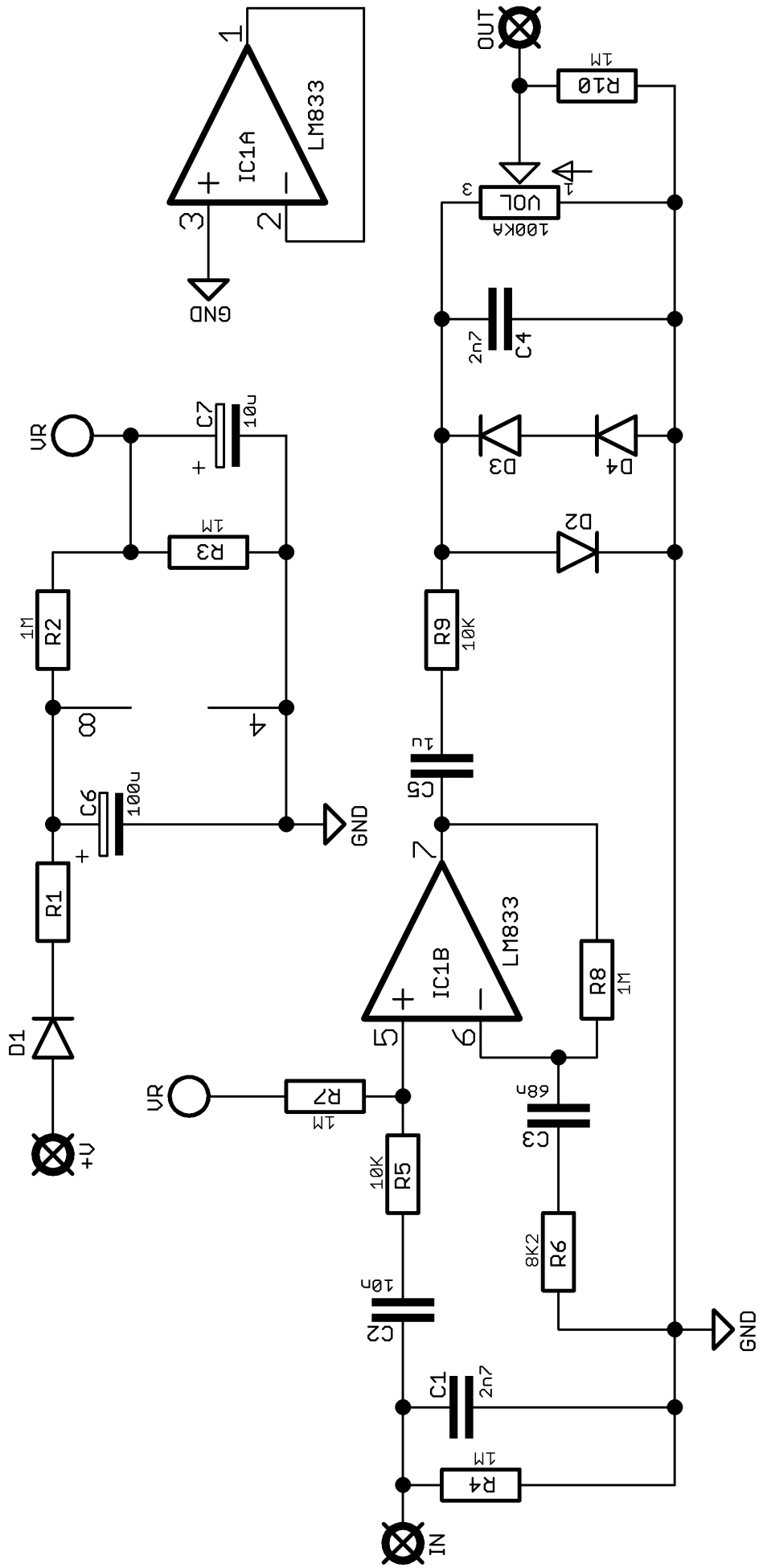


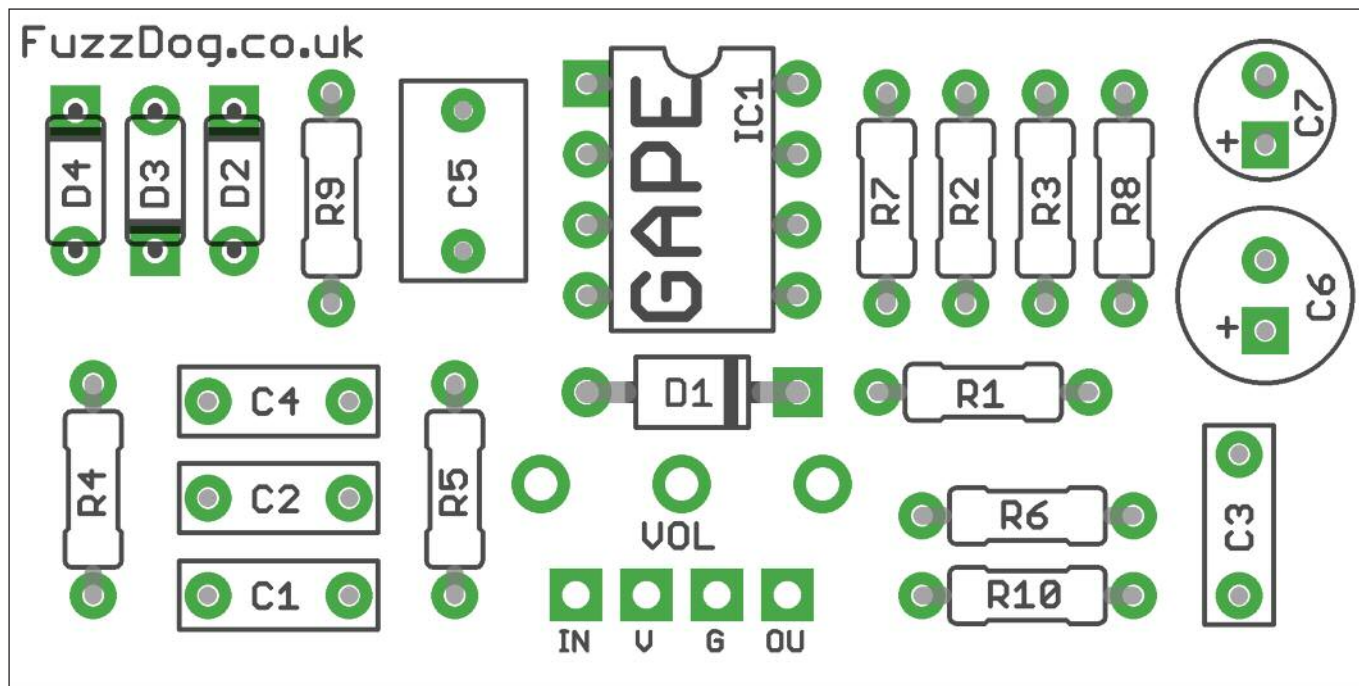
Schematic + BOM



R1	1M	C1	2n7	D1	1N5817
R2	1M	C2	10n	D2-4	CDSH270*
R3	1M	C3	68n		
R4	1M	C4	2n7	IC1	LM833
R5	10K	C5	1u		
R6	8K2	C6	100u elec	VOL	100KA
R7	1M	C7	10u elec		
R8	1M				
R9	10K				*Obsolete schottk
R10	1M				think using BAT41

*Obsolete schottky. If you think using BAT41 will sound a world apart we've got some snake oil to sell you.

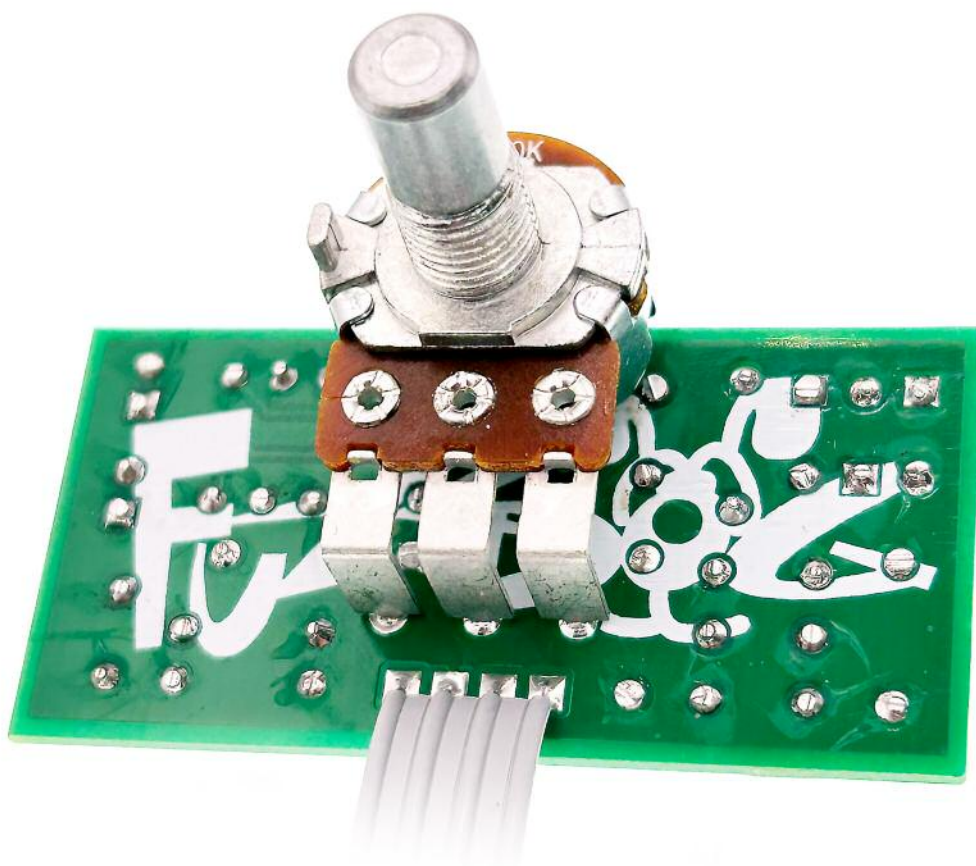




Snap the small metal tags off the pot so it can be mounted flush in the box.

You should solder all other board-mounted components before you solder the pots.

Once they're in place you'll have no access to much of the board.



Drilling template

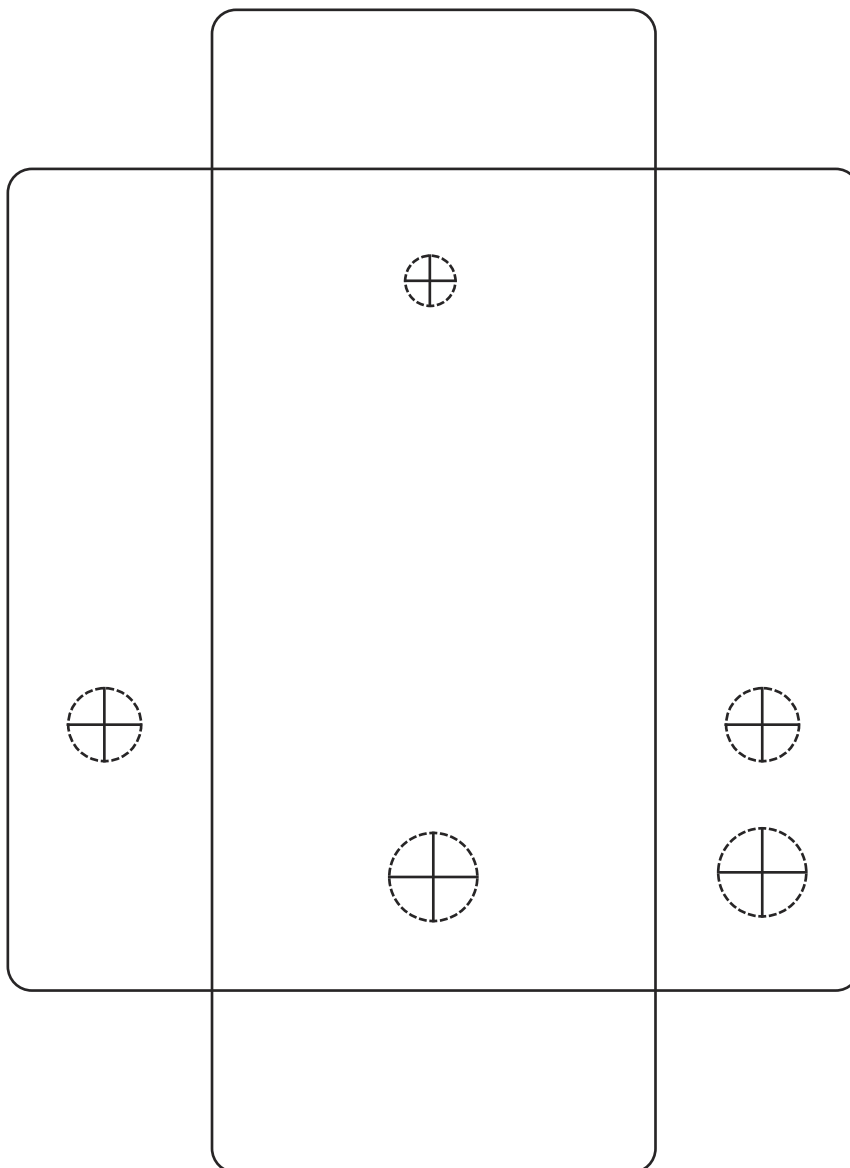
Hammond 1590B - 60 x 111 x 31mm

Drill sizes listed are minimum.

It's a good idea to add 1mm to anything mounted on the PCB that'll poke through the front of the enclosure.

Drill sizes:

Pots	7mm
Jacks	10mm
Footswitch	12mm
DC Socket	12mm
Toggle switches	6mm
Rotary switches	10mm



This template is a rough guide only. You should ensure correct marking of your enclosure before drilling. You use this template at your own risk.

Pedal Parts Ltd can accept no responsibility for incorrect drilling of enclosures.

FuzzDog.co.uk