

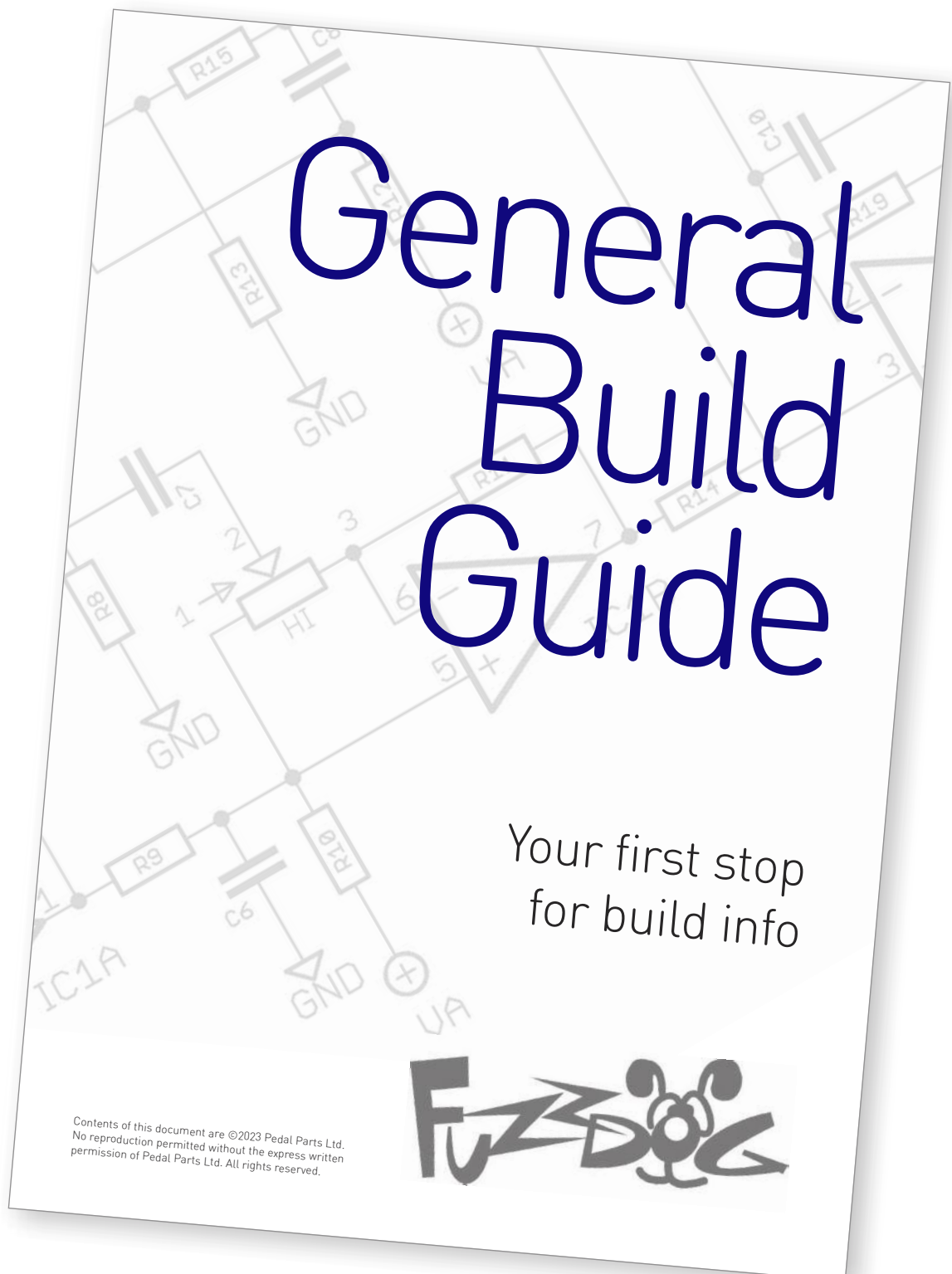
FuzzStainer

Sam Ash's full-on
fuzzmonster

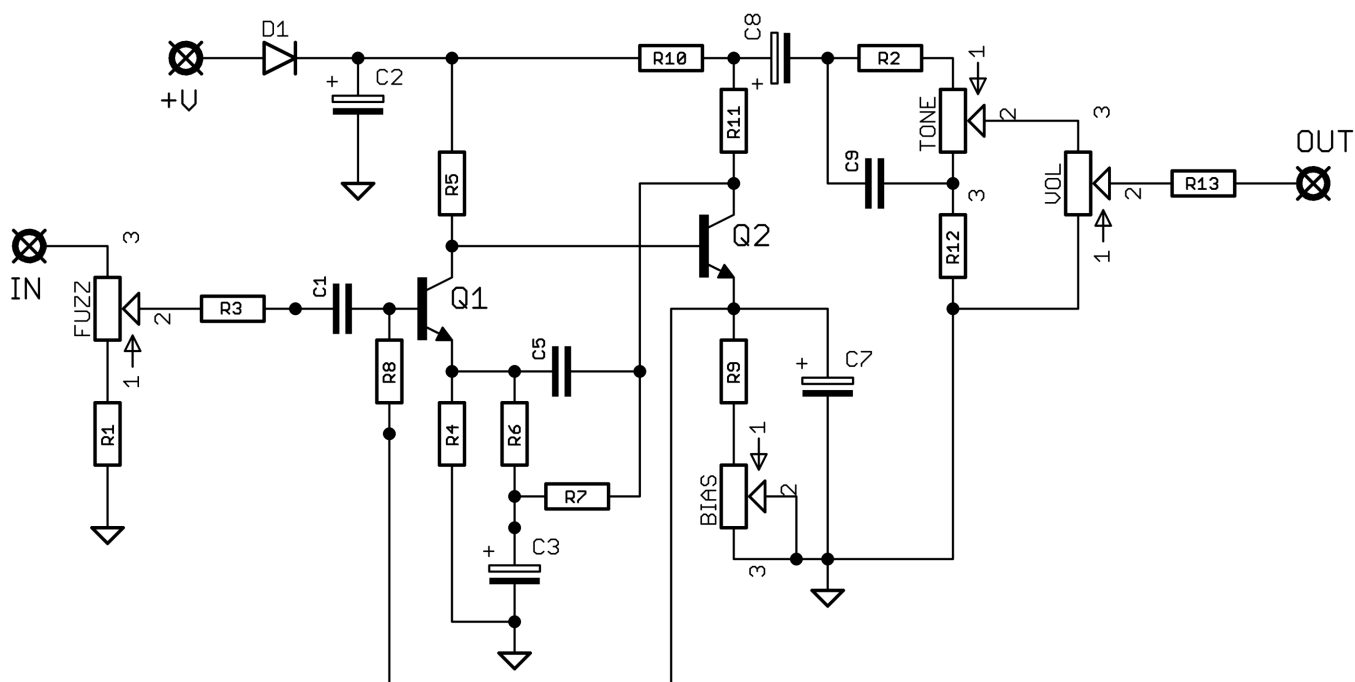


Before you dig in, ensure you download and read the **General Build Guide**.

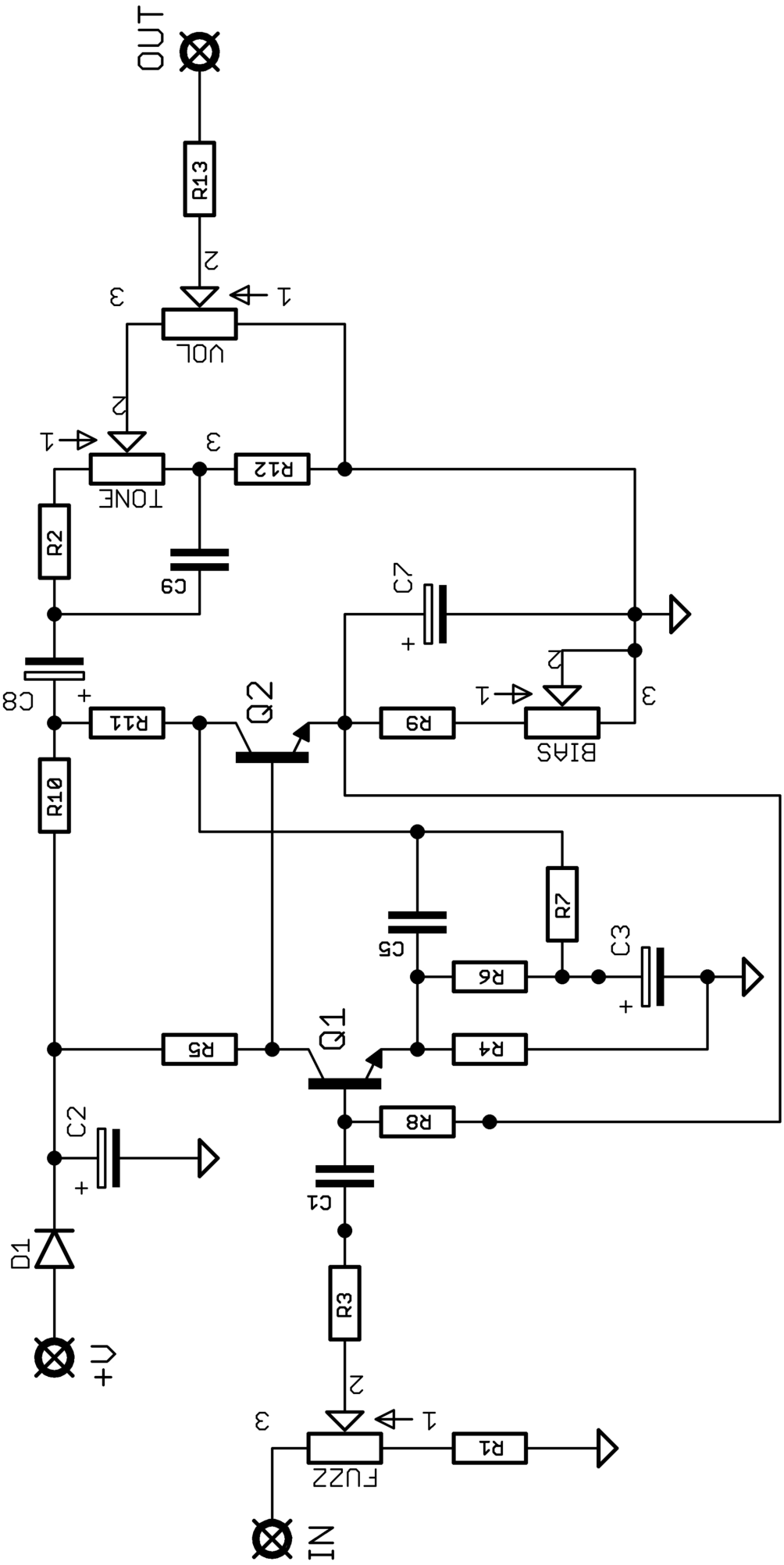
It contains all the information you need for a successful outcome.

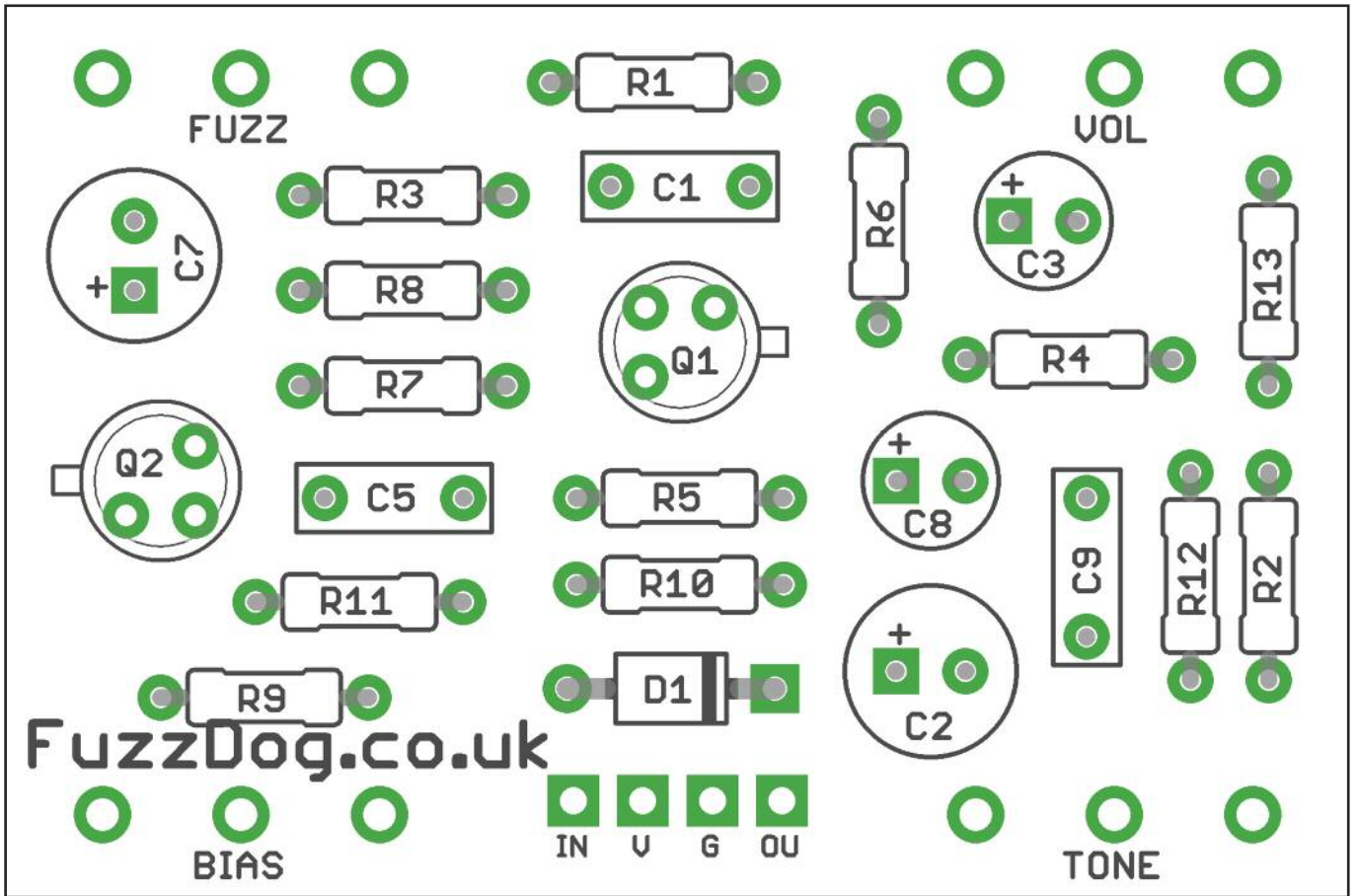


Schematic + BOM



R1	4K7	C1	22n	Q1-2	2N2222
R2	22K	C2	100u elec	D1	1N5817
R3	15K	C3	10u elec	FUZZ	100KB
R4	220R	C5	120p	TONE	100KB
R5	100K	C7	100u elec	VOL	25KB
R6	22K	C8	1u elec	BIAS	10KA
R7	22K	C9	22n		
R8	1M5				
R9	2K				
R10	4K7				
R11	4K7				
R12	15K				
R13	1K				





Snap the small metal tag off the pots so they can be mounted flush in the box.

You should solder all other board-mounted components before you solder the pots.



Drilling template

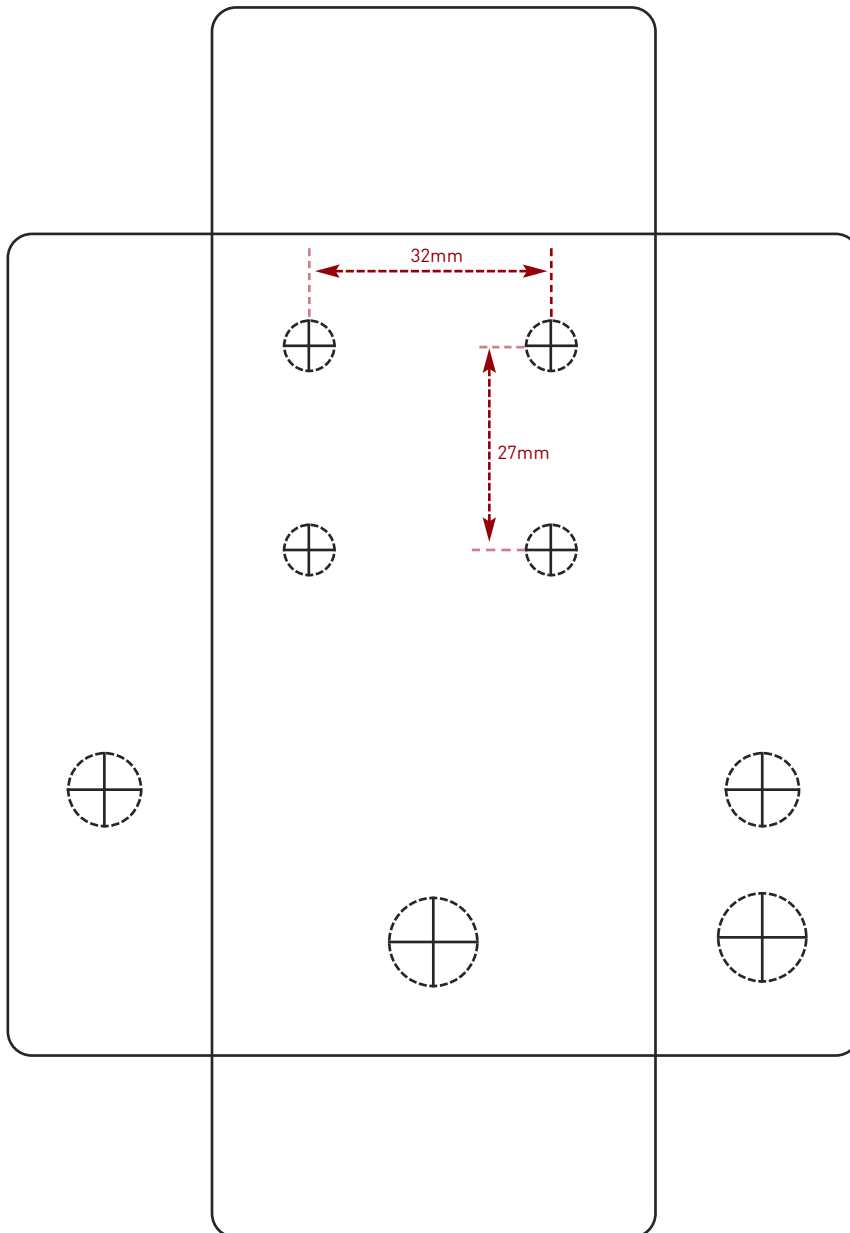
Hammond 1590B - 60 x 111 x 31mm

Drill sizes listed are minimum.

It's a good idea to add 1mm to anything mounted on the PCB that'll poke through the front of the enclosure.

Drill sizes:

Pots	7mm
Jacks	10mm
Footswitch	12mm
DC Socket	12mm
Toggle switches	6mm
Rotary switches	10mm



This template is a rough guide only. You should ensure correct marking of your enclosure before drilling. You use this template at your own risk.

Pedal Parts Ltd can accept no responsibility for incorrect drilling of enclosures.

FuzzDog.co.uk