

Fuzz Guy

Utterly tweakable silicon
Fuzz Face-based box

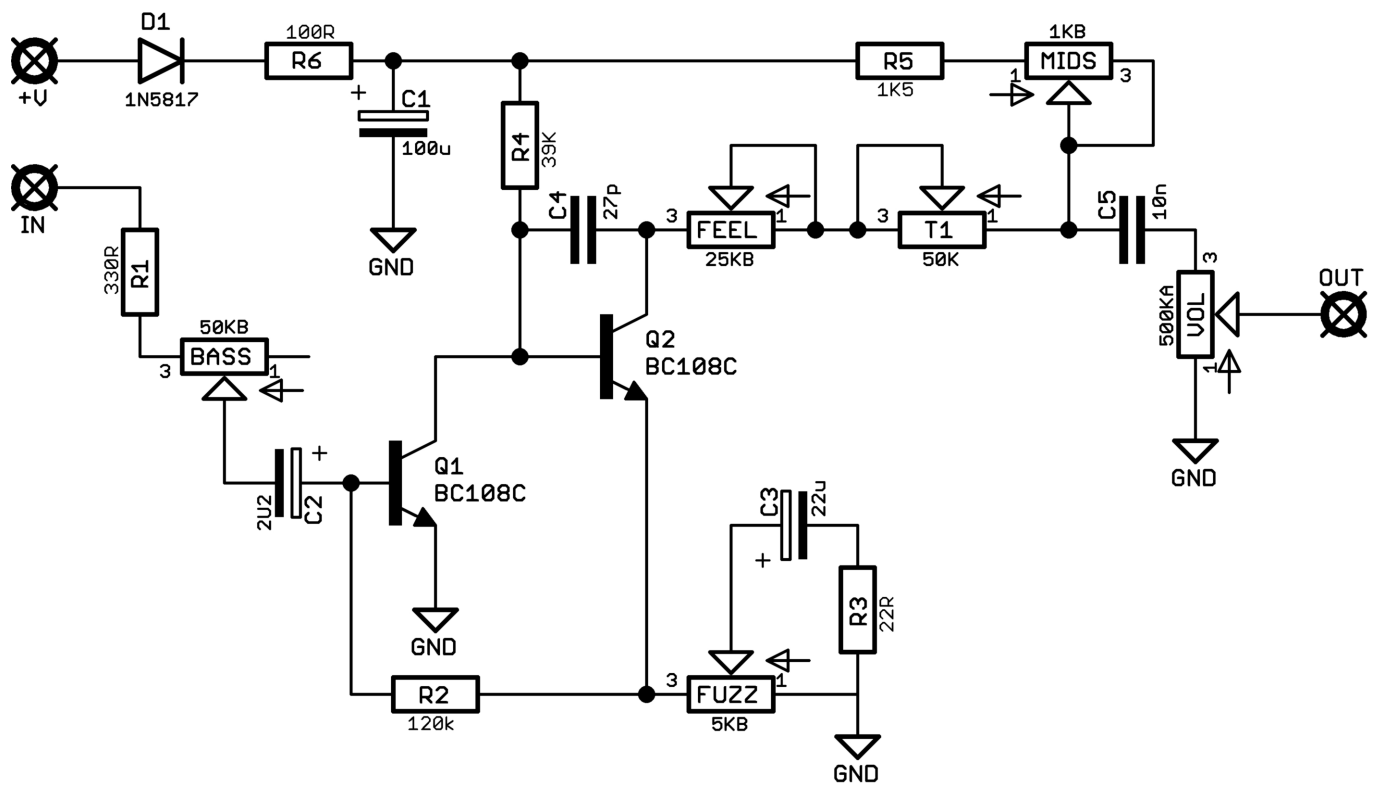


Before you dig in, ensure you download and read the **General Build Guide**.

It contains all the information you need for a successful outcome.



Schematic + BOM

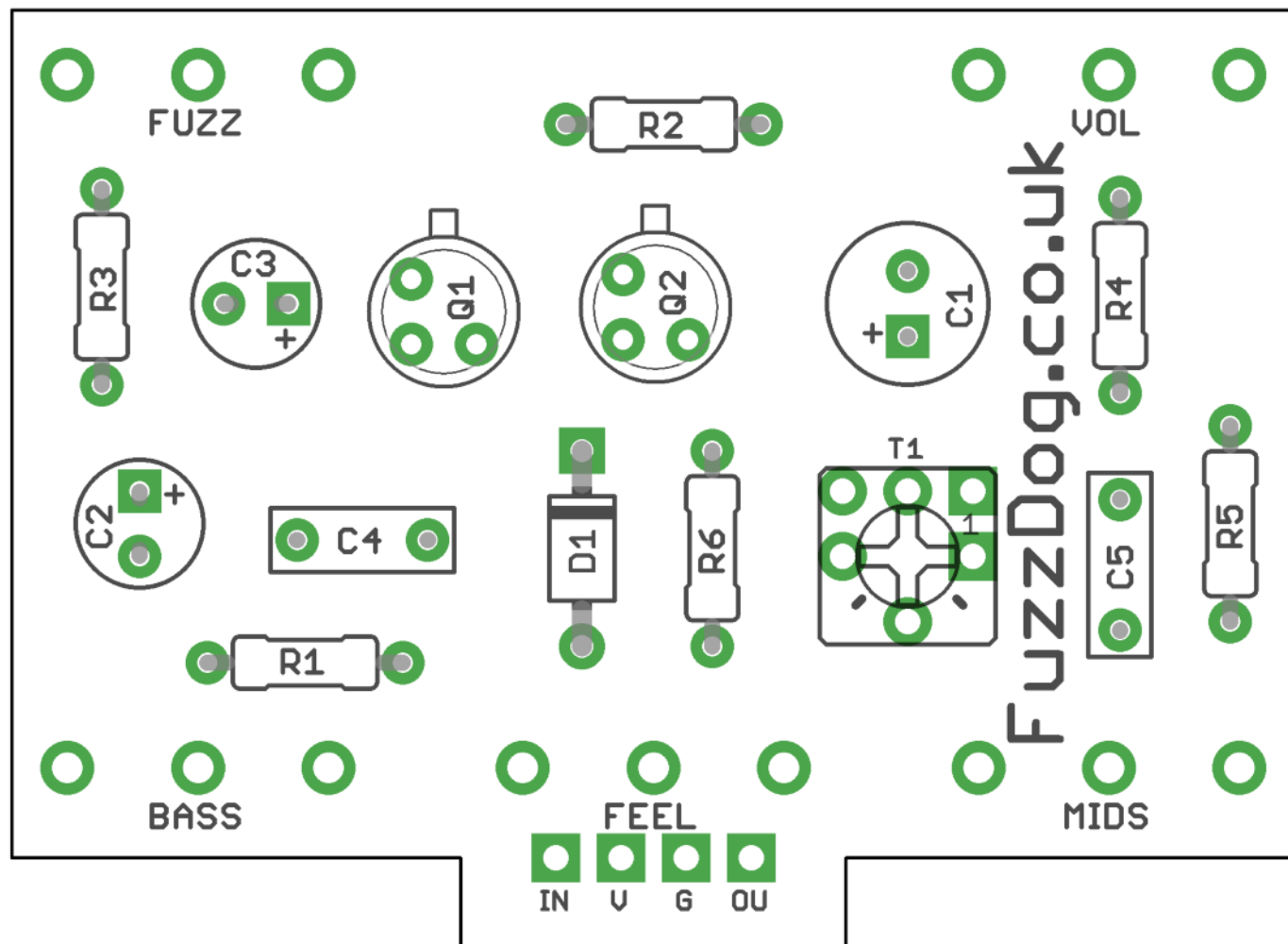


R1 330R
R2 120K
R3 22R
R4 39K
R5 1K5
R6 100R

C1 100u elec
C2 2u2 elec
C3 22u elec
C4 27p
C5 10n
D1 1N5817

Q1-2 BC109C
BASS 50KB
FEEL 25KB
FUZZ 5KB
MIDS 1KB
VOL 500KA

T1 50K Trimmer

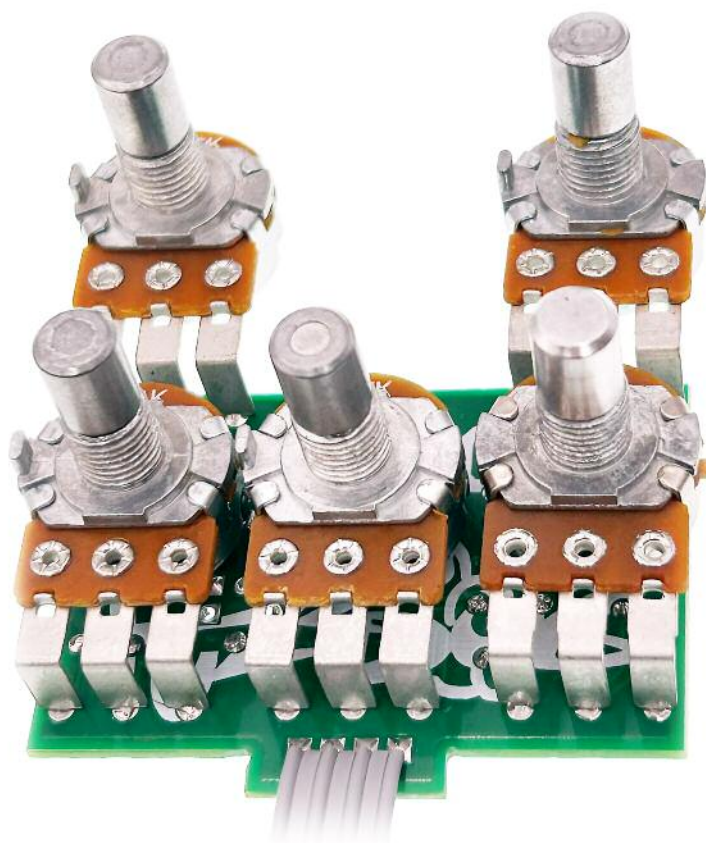


Snap the small metal tags off the pots so they can be mounted flush in the box.

You should solder all other board-mounted components before you solder the pots.

Once they're in place you'll have no access to much of the board.

Adjust T1 until you get a useable sweep of the FEEL control. There's no right or wrong, it's totally down to personal taste.



Drilling template

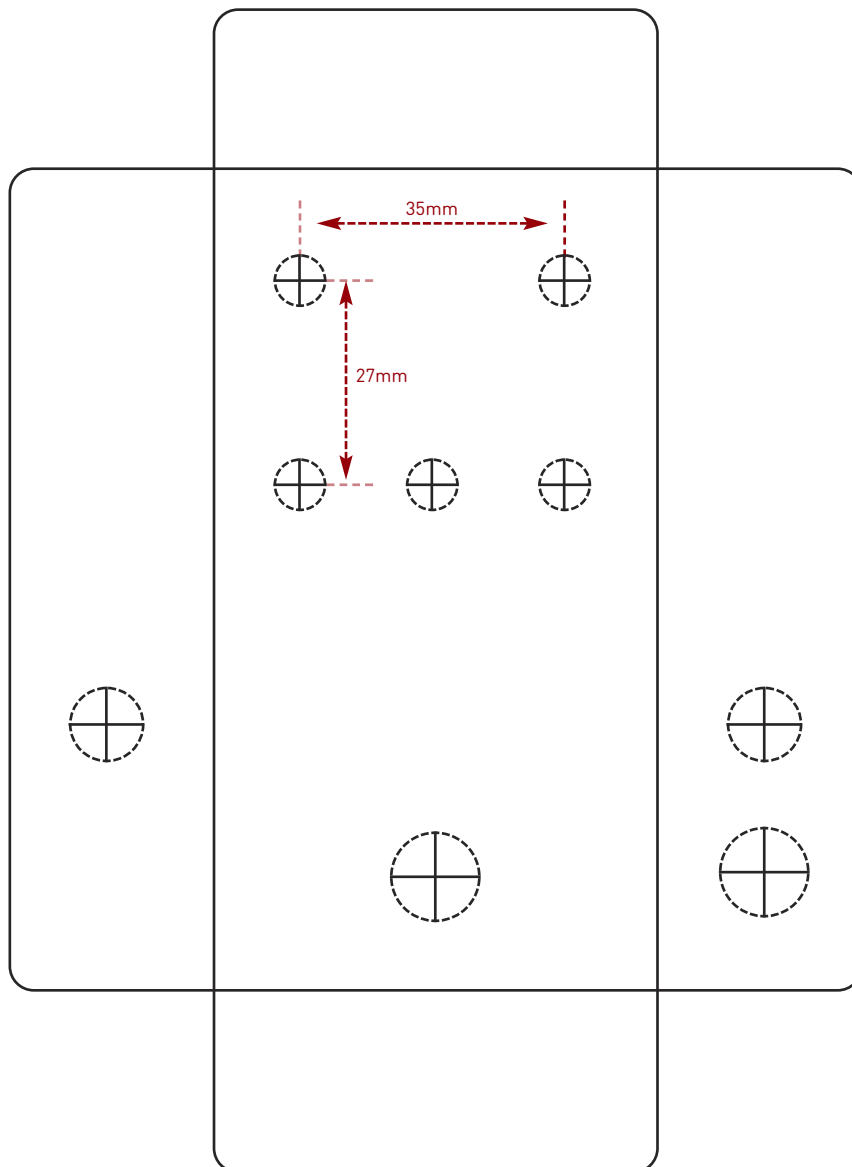
Hammond 1590B - 60 x 111 x 31mm

Drill sizes listed are minimum.

It's a good idea to add 1mm to anything mounted on the PCB that'll poke through the front of the enclosure.

Drill sizes:

Pots	7mm
Jacks	10mm
Footswitch	12mm
DC Socket	12mm
Toggle switches	6mm
Rotary switches	10mm



This template is a rough guide only. You should ensure correct marking of your enclosure before drilling. You use this template at your own risk.

Pedal Parts Ltd can accept no responsibility for incorrect drilling of enclosures.

FuzzDog.co.uk