

Frequency Freebooter

Delightful delay with some
mean modulation

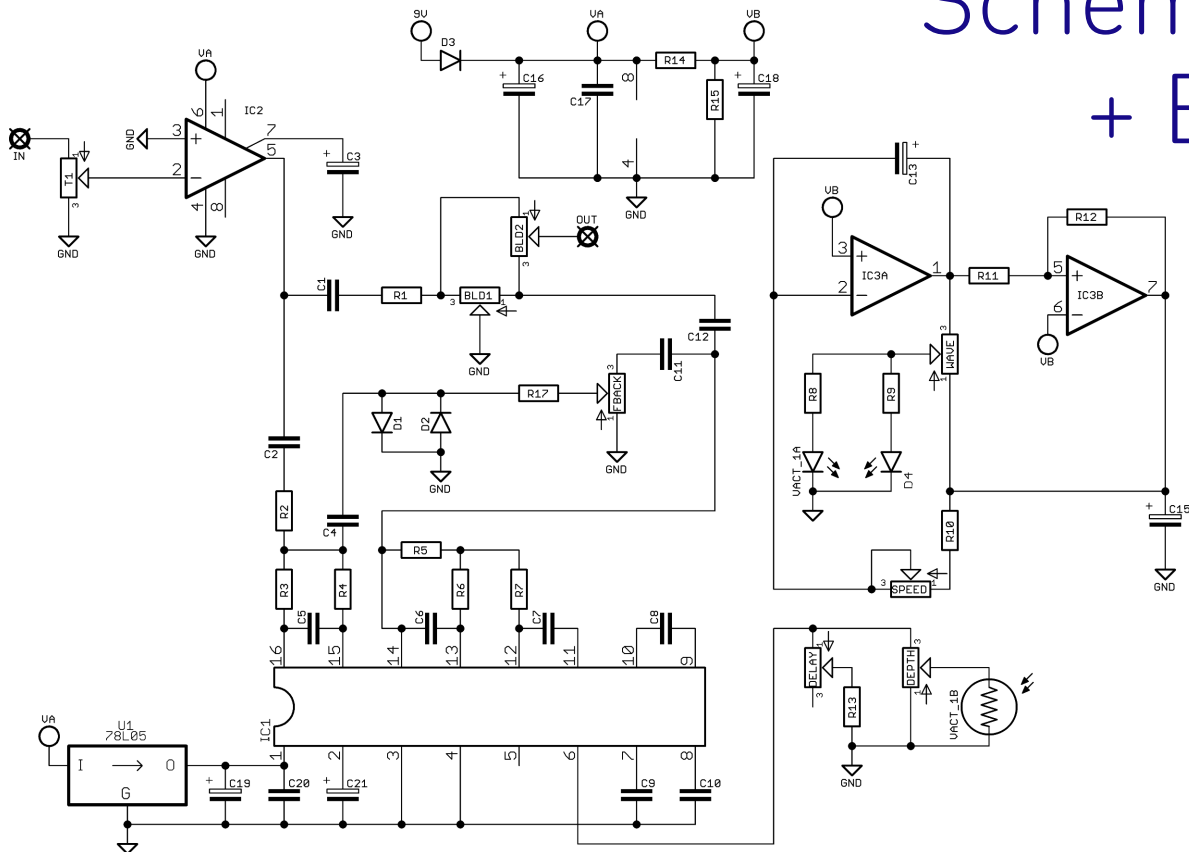


Before you dig in, ensure you download and read the **General Build Guide**.

It contains all the information you need for a successful outcome.

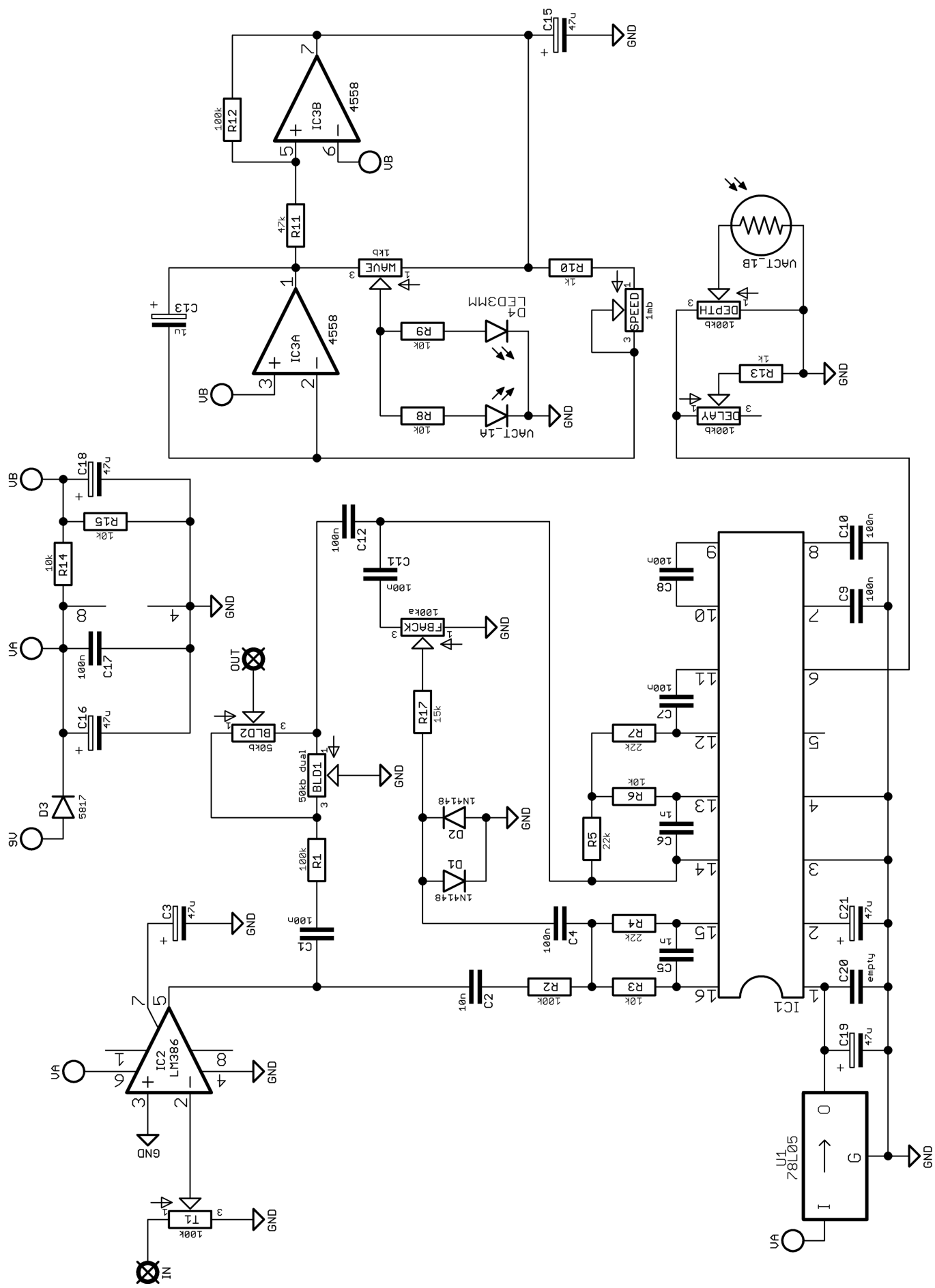


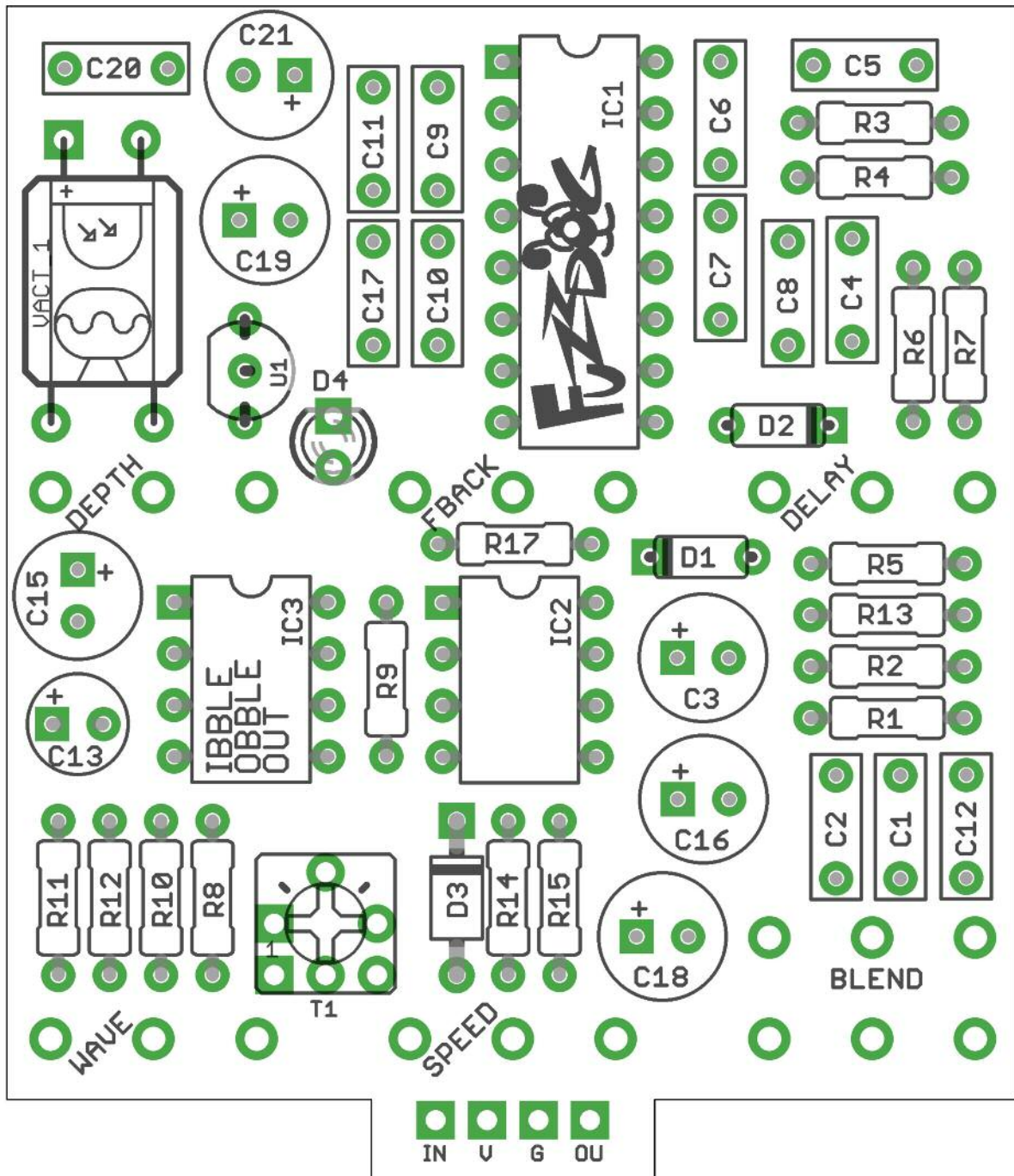
Schematic + BOM



R1	100K	C1	100n	IC1	PT2399
R2	100K	C2	10n	IC2	LM386
R3	10K	C3	47u elec	IC3	4558
R4	22K	C4	100n	U1	70L05
R5	22K	C5	1n		
R6	10K	C6	1n	D1-2	1N4148
R7	22K	C7	100n	D3	1N5817
R8	10K	C8	100n	D4	3MM LED*
R9	10K	C9	100n		
R10	1K	C10	100n	BLEND	50KB DUAL
R11	47K	C11	100n	DELAY	100KB
R12	100K	C12	100n	DEPTH	100KB
R13	1K	C13	1u elec	FDBACK	50KB
R14	10K	C15	47u elec	SPEED	1MB
R15	10K	C16	47u elec	WAVE	1KB
R17	15K	C17	100n		
		C18	47u elec	VACT	5MM Yellow LED + 1M LDR
T1	100K TRIM	C19	47u elec		
		C20	Empty		
		C21	47u elec		

*Optional rate indicator





PCB layout ©2025 Pedal Parts Ltd.

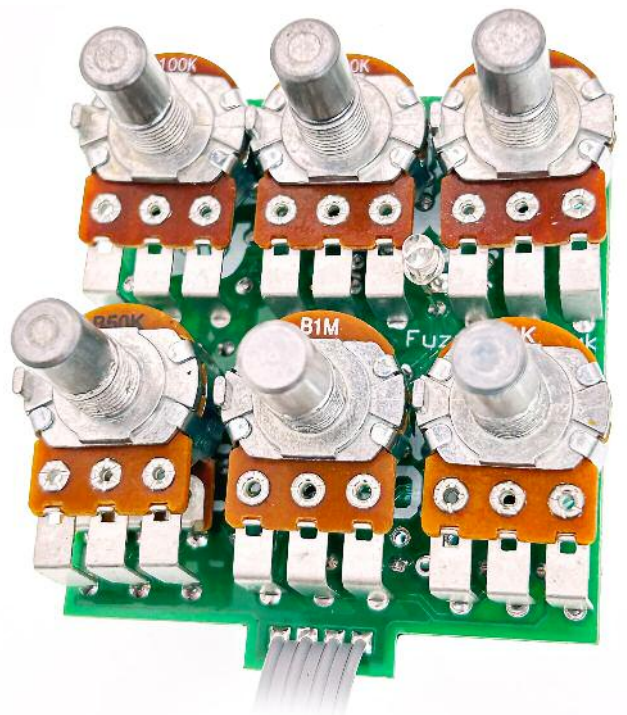
Snap the small metal tag off the pots so they can be mounted flush in the box.

You should solder all other board-mounted components before you solder the pots.

Once they're in place you'll have no access to much of the board.

TRIMMER

Adjust for your preferred input level.



Drilling template

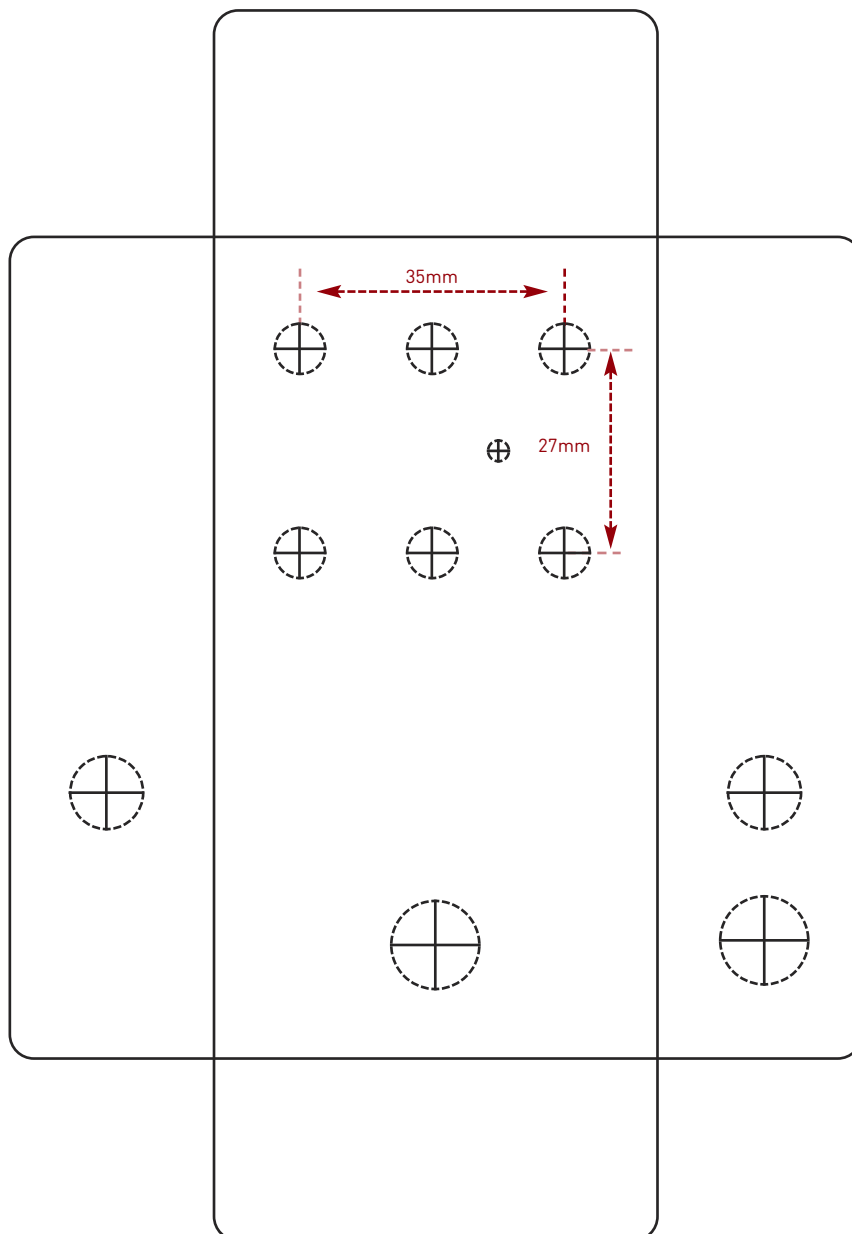
Hammond 1590B - 60 x 111 x 31mm

Drill sizes listed are minimum.

It's a good idea to add 1mm to anything mounted on the PCB that'll poke through the front of the enclosure.

Drill sizes:

Pots	7mm
Jacks	10mm
Footswitch	12mm
DC Socket	12mm
Toggle switches	6mm
Rotary switches	10mm



This template is a rough guide only. You should ensure correct marking of your enclosure before drilling. You use this template at your own risk.

Pedal Parts Ltd can accept no responsibility for incorrect drilling of enclosures.

FuzzDog.co.uk